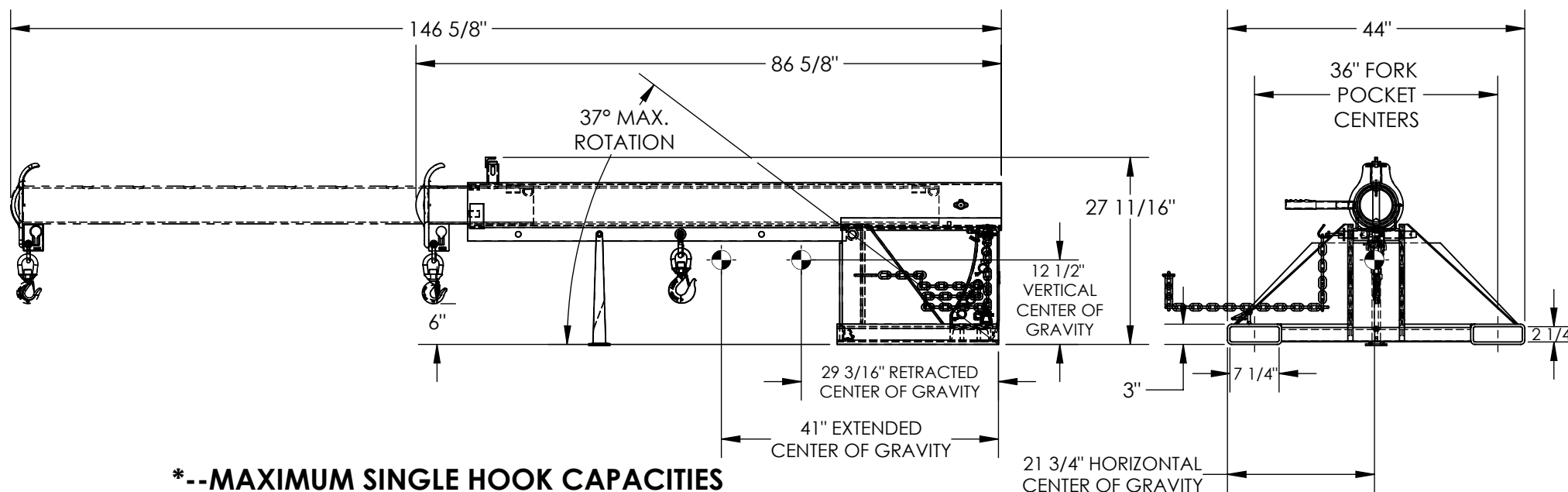


LIFT MASTER BOOM, ORBIT TELESCOPING BOOM-LM-OBT-6-36

APPROX WEIGHT: 537.39 lbs.
DOES NOT INCLUDE WEIGHT OF POWER OR PACKAGING!!!

*** ANY ADDITIONS, DELETIONS, OR OMISSIONS MUST BE CORRECTED ON THIS DRAWING AS THIS DRAWING WILL BE CONSIDERED ALL INCLUSIVE ***

ALL GRAPHICS PROVIDED ARE FOR REFERENCE ONLY. IF CERTAIN DIMENSIONS ARE CRITICAL PLEASE VERIFY THOSE DIMENSIONS WITH YOUR SALESPERSON



*--MAXIMUM SINGLE HOOK CAPACITIES

DISTANCE	36"	48"	60"	72"	84"	96"	108"	120"	132"	144"
CAPACITY	6000	5000	4500	4000	3500	3000	2600	2300	2000	1800

STANDARD FEATURES

MODEL NUMBER IS LM-OBT-6-36
CAPACITY IS 6,000 LBS
MAXIMUM TILT ANGLE IS 37°
OVERALL HEIGHT - 27 11/16"
HEIGHT (MAX TILTED) - 99 1/2"
LENGTH RETRACTED - 86 5/8"
LENGTH EXTENDED - 146 5/8"
OVERALL WIDTH IS 44"
36" MINIMUM HOOK POINT
144" MAXIMUM HOOK POINT
HOOK HEIGHT - 6"
HOOK HEIGHT (MAX TILTED) - 78 5/16"
USABLE FORK POCKET - 2 1/4"x7 1/4"
36" FORK POCKET CENTERS
TOUGH BAKED IN POWDER COATED
BLUE BASE FRAME W/ YELLOW EXTENSION

APPROX. WEIGHT / LOST LOAD = 537.39

MINIMUM EFFECTIVE THICKNESS = LESS THAN 1"

NEVER EXCEED LOAD CENTER

RATING PER FORKTRUCK

MANUFACTURERS GUIDELINES.

DO NOT USE THIS FORK TRUCK

ATTACHMENT IF LOAD WILL

EXCEED FORK TRUCK MANUFACTURER'S

LOAD CENTER RATING

DIMENSION TOLERANCE $\pm 1/4$ "

APPROVAL

I, THE UNDERSIGNED, AGREE THAT THE PRODUCT AS REPRESENTED SATISFIES DESIGN AND DIMENSION REQUIREMENTS. I ALSO ACKNOWLEDGE MY DUTY TO CONFIRM PRODUCT AND INSTALLATION COMPLIANCE WITH ALL APPLICABLE FEDERAL, STATE AND LOCAL REGULATIONS AND STANDARDS.

ANY MODIFIED UNITS ARE NON-RETURNABLE

[] As drawn [] As marked

Signed: _____ Date: _____

Printed Name: _____

LEAD TIME WILL START UPON RECEIPT OF SIGNED APPROVAL DRAWING

FOR INTERNAL USE ONLY
PROJECT SIGN OFF

SALES	
ENG.	
FAB.	
POWER	

DISTRIBUTOR'S NAME:

VESTIL MANUFACTURING

DRAWN BY: B.NOTHNAGEL

DATE: 7/1/2015

REFERENCE: X

SCALE: 1:22

QUOTED LEAD TIME: X

QUOTE #
X

P.O.# X

W.O.# X

SALES: X

FILE NAME:

08-007-306

SPECIAL FEATURES

NONE