

INSTRUCTIONS

Modular Sofa

CARTON A-2 PART LIST

A Armrest/Backrest



x1

B Armrest/Backrest



x1

1 Plastic Leg



x4

2 Plastic Washer



x4

3 Armrest / Backrest Fitting



x4

4 Screw



x10

CARTON A-3 PART LIST

A Armrest/Backrest



x2

B Armrest/Backrest



x1

1 Plastic Leg



x6

2 Plastic Washer



x6

3 Armrest / Backrest Fitting



x6

4 Screw



x15

CARTON A-4 PART LIST

A Armrest/Backrest



x3

B Armrest/Backrest



x1

1 Plastic Leg



x8

2 Plastic Washer



x8

3 Armrest / Backrest Fitting



x8

4 Screw



x20

CARTON B PART LIST

B Armrest/Backrest



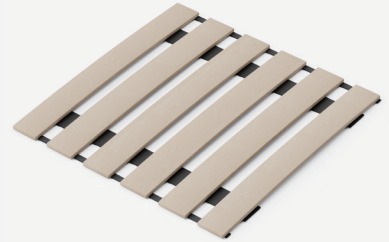
x1

C Seat Frame



x1

D Slats



x1

E Pillow



x1

F Seat Cushion



x1

1 Plastic Leg



x6

2 Plastic Washer



x6

3 Armrest / Backrest Fitting



x2

4 Screw



x5

5 Single Seat Fitting



x2

CARTON C PART LIST

C Seat Frame



x1

D Slats



x1

F Seat Cushion



x1

1 Plastic Leg



x4

2 Plastic Washer



x4

5 Single Seat Fitting



x4

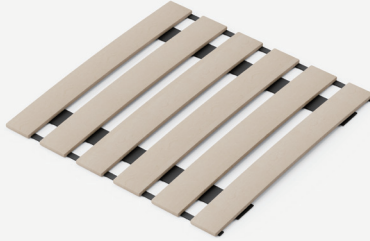
CARTON D PART LIST

C Seat Frame



x2

D Slats



x2

F Seat Cushion



x2

E Pillow



x2

1 Plastic Leg



x8

2 Plastic Washer



x8

5 Single Seat Fitting



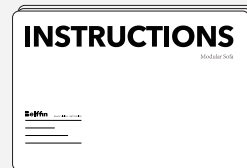
x5

6 Screwdriver



x1

7 Assembly Instructions



x1

Notice

Modular sofas consist of several modules as described above, but not all types are included in every sofa set.

You can extend your sofa at any time by ordering new modules.

Step1:



Step2:



Step3:



Step4:



Step5:



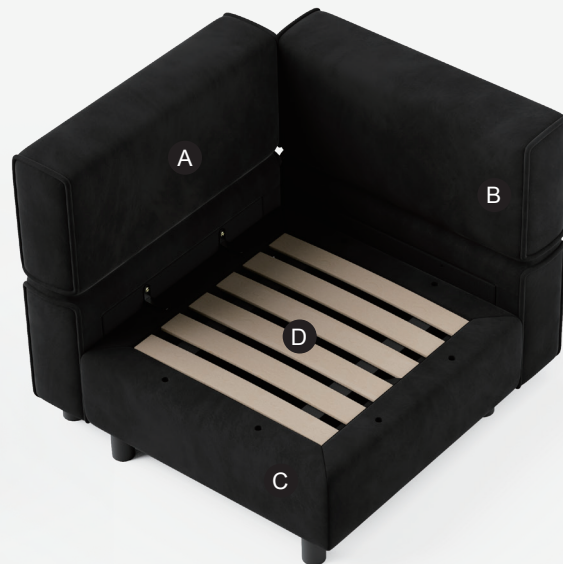
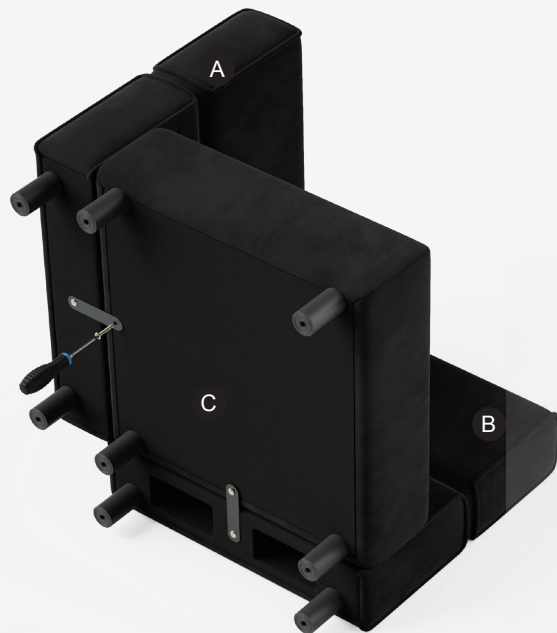
Step6:



Step7:



Step8:



Step9:

The armrests/backrests are adjustable continuously by "pull "or "push".

To adjust the armrests/backrests, just pull it to dotted line position (as the picture shows) to get reset first then pull the arm/back frame to the desired position.

Please note that the maximum angle of pulling is 135°.

You can push the armrest/backrest back directly and there is no need to get reset.



Step9:



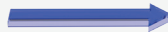
Step10:



Step11:



Combination 1



Combination 2

