

# E l e m e n t s

O f D e s i g n

## 10 YEAR MANUFACTURER'S

### LIMITED WARRANTY

All parts of this Elements Of Design faucet are warranted to the original retail purchaser to be free from defects in material and workmanship for a period of Ten(10) years from the date of purchase as shown on the purchaser's receipt.

This warranty is limited to defective parts only, labor charges and/or damage resulting from improper installation, repair or replacements, as well as incidental and consequential damages connected therewith are excluded.

Any damage to this faucet as a result of misuse, abuse, neglect, accident, or improper installation or any use not consistent with the instructions furnished by us, will void this warranty.

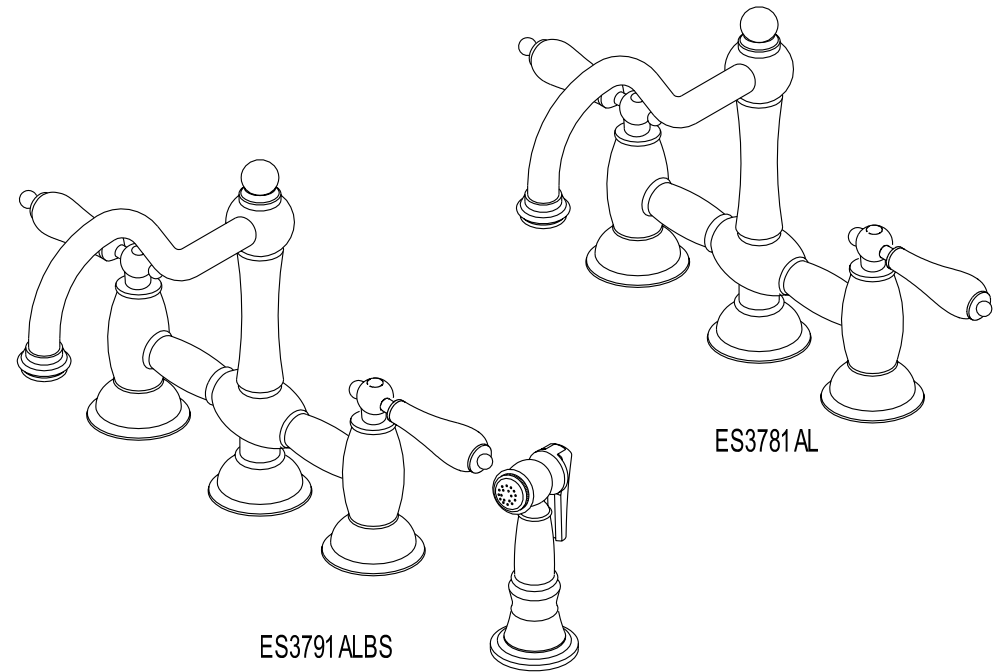
Replacement parts can be obtained from your local dealer. Freight cost is not covered by Manufacture.

### CAUTION!!!

1. Water lines must be completely flushed before use, to avoid debris & clogs in your water system leading to mal-function and reduction of water flow.
2. Warranty to be void if water lines are not flushed before use of new faucet.
3. Use of abrasives of any strength may damage the finish of your faucet and void this warranty.

CODE APPROVAL: LA#M-000018

www.eodfaucet.com  
 TOLL FREE CUSTOMER SERVICE: 1-877-FAUCET-1 (328-2381)  
 TECHNICAL SUPPORT Email : service@eodfaucet.com  
 6240 Prescott Ct. Chino, CA 91710



Installation instructions apply to:

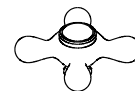
Model#	Handle Type				Sprayer	Finish
ES3781	AL	AX	PL	PX	None	Chrome
ES3782	AL	AX	PL	PX	None	Polished Brass
ES3785	AL	AX	PL	PX	None	Oil Rubbed Bronze
ES3788	AL	AX	PL	PX	None	Satin Nickel
ES3791	AL	AX	PL	PX	Brass	Chrome
ES3792	AL	AX	PL	PX	Brass	Polished Brass
ES3795	AL	AX	PL	PX	Brass	Oil Rubbed Bronze
ES3798	AL	AX	PL	PX	Brass	Satin Nickel



AL - American Lever



PL - Porcelain Lever



AX - American Cross



PX - Porcelain Cross

# Elements

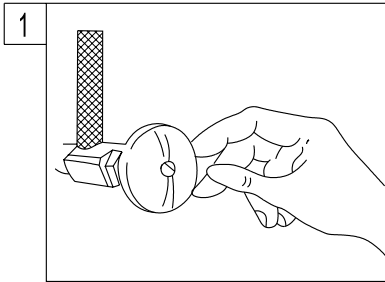
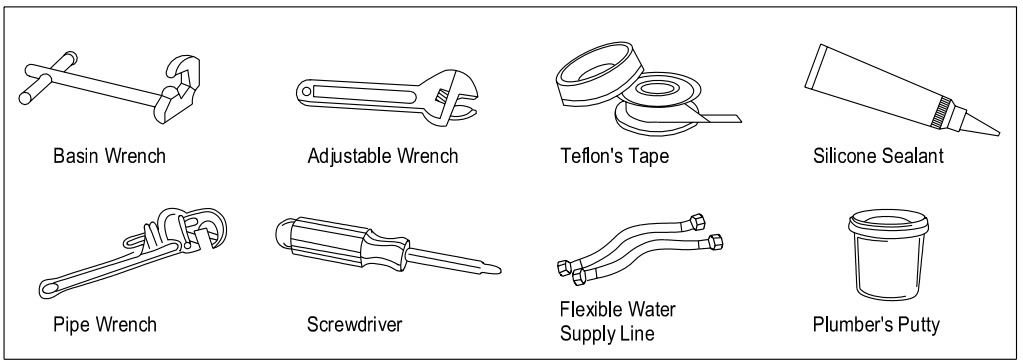
O f D e s i g n

## INSTALLATION INSTRUCTIONS

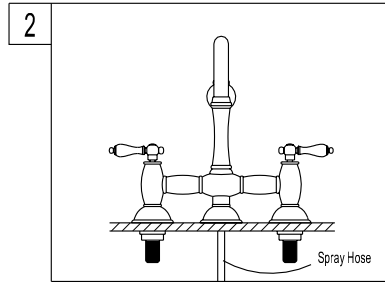
For Use With EOD's Twin-Handle Kitchen Faucets With or Without Sprayer

### NOTE:

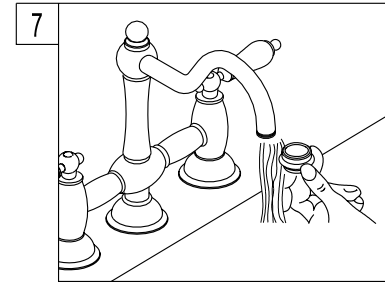
1. FLUSH LINE BEFORE FAUCET INSTALLATION TO REMOVE DEBRIS IN LINES.
2. NO PLUMBER'S PUTTY ON ANY FINISH TO CORRODE FINISH OF FAUCET SURFACE.



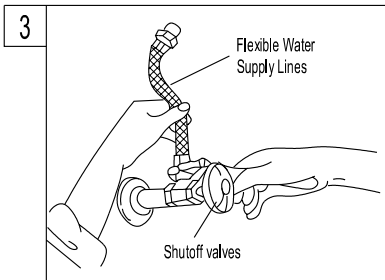
1. Shut off hot and cold water supply under sink. Plug sink drain with cloth to avoid losing small parts. Remove old faucet.



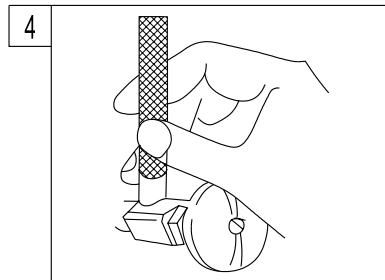
2. Set the faucet in place, insert the inlet shanks through the sink holes, and press down. Assemble the washers and locknuts on the inlet shanks, and then tighten the nuts with hand.



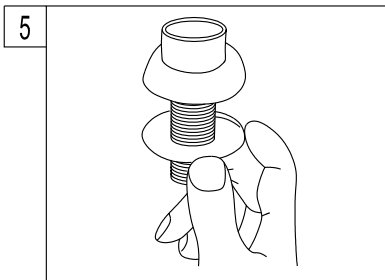
7. Remove the aerator before turning on your new faucet for the first time. This is to prevent any deposits from clogging your aerator. Allow both hot and cold water to run for one minute. Replace aerator.



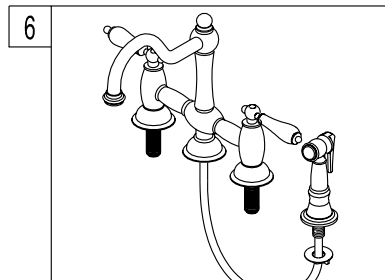
3. Connect the water supply lines. Before connecting the supply lines, apply pipe joint compound to the threads on the inlet shanks and shut off valves.



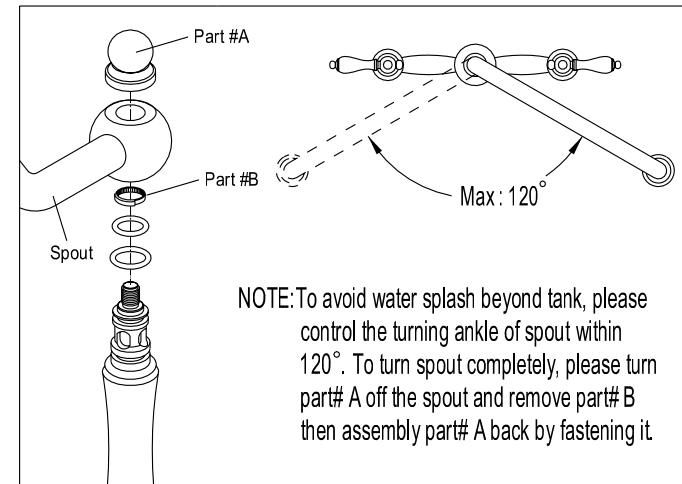
4. Turn on water supply valves and check for leaks, especially at hook-ups to supply lines.



5. For model is with spray head and hose. Place the spray guide through the fourth hole in the sink, screw the locknut onto the shank and tighten firmly.



6. Insert the hose through the guide and attach to the fitting on the bottom of the faucet. Attach spray head to the hose.



NOTE: To avoid water splash beyond tank, please control the turning angle of spout within 120°. To turn spout completely, please turn part# A off the spout and remove part# B then assembly part# A back by fastening it.

### Warning!!!

1. Part# B will break if the spout is turned by extreme strength.
2. Part# B will retain the spout swivel within 120 radius.