

FEATURES & SPECIFICATIONS

INTENDED USE

Provides an LED lighting platform to deliver general or task lighting for residential and light commercial applications. Light engine delivers long life and excellent color to ensure a quality, low-maintenance light installation. Ideal for use in bathrooms, lavatories, hallways, corridors, stairways, utility areas and more.

CONSTRUCTION

The Traditional Square Vanity is constructed of an acrylic diffuser with housings available in brushed nickel and bronze finishes. The white acrylic diffuser provides even illumination and softens the appearance of the LEDs for improved aesthetics.

OPTICS

2' produces 1300 lumens, 3' produces 1900 lumens, and 4' produces 2500 lumens at 3000K with 50,000 hours of life.

Extruded acrylic diffuser is of highly transmissive material to minimize LED image and provides high-angle brightness control.

ELECTRICAL

Long-life LEDs, coupled with a multivolt driver, provide extended service life. Standard input = 9.5 watts, (1'); 18 watts, (2'); 26 watts, (3'); 34 watts, (4'). Fixture is rated to deliver L70 performance at 50,000 hours and operates at 120-277 volts.

Use with non-dimmable switches only.

LISTINGS

UL Listed to US and Canadian safety standards. Listed for damp locations. ENERGY STAR® certified.

WARRANTY

5-year limited warranty. Complete warranty terms located at

www.acuitybrands.com/CustomerResources/Terms_and_conditions.aspx

NOTE: Actual performance may differ as a result of end-user environment and application.

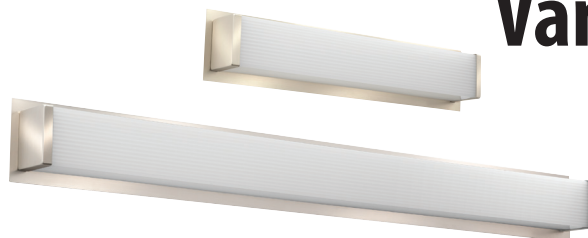
All values are design or typical values, measured under laboratory conditions at 25 °C.

Specifications subject to change without notice.

Catalog Number
Notes
Type

Decorative Indoor

Traditional Square Vanity



VANITY LED



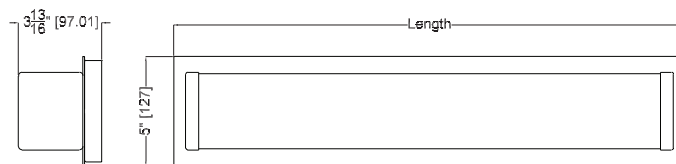
ADA



U.S. PATENT PENDING

SPECIFICATIONS	2FT	3FT	4FT
Length:	23-7/16 (595)	35-1/4 (895)	47-1/16 (1195)
Weight:	7.3 (3.3)	10 (4.5)	12.7 (5.8)
3000K Lumens (LPW)	1302 (72)	1919 (73)	2551 (75)
4000K Lumens (LPW)	1373 (76)	2024 (77)	2689 (79)

All dimensions are inches (millimeters) unless otherwise indicated. Weights are pounds (kilograms).



ORDERING INFORMATION

For shortest lead times, configure product using **bolded options**.

Example: FMVTSL 36IN MVOLT 30K 90CRI BN

Series		Length		Voltage		Color temperature		CRI		Finish	
FMVTSL	Traditional Square Vanity	24IN	2' Nominal	MVOLT	MVOLT (120V-277V)	40K	4000 K ¹	90CRI	>90	BN	Brushed Nickel
		36IN	3' Nominal			35K	3500 K ²			KR	Chrome ³
		48IN	4' Nominal			30K	3000 K			BZ	Bronze ³
						27K	2700 K ²				

Replacement parts: Order as separate catalog number.

DFMVTSL 24IN	2' Traditional Square replacement diffuser
DFMVTSL 36IN	3' Traditional Square replacement diffuser
DFMVTSL 48IN	4' Traditional Square replacement diffuser

Notes

- 60-day lead time for non-stock color temperatures; minimum 50 order quantity.
- 90-day lead time for non-standard color temperatures; minimum 50 order quantity.
- 60-day lead time for non-stock finishes; minimum 50 order quantity.

LED Vanity Traditional Square

PHOTOMETRICS

Distribution Curve

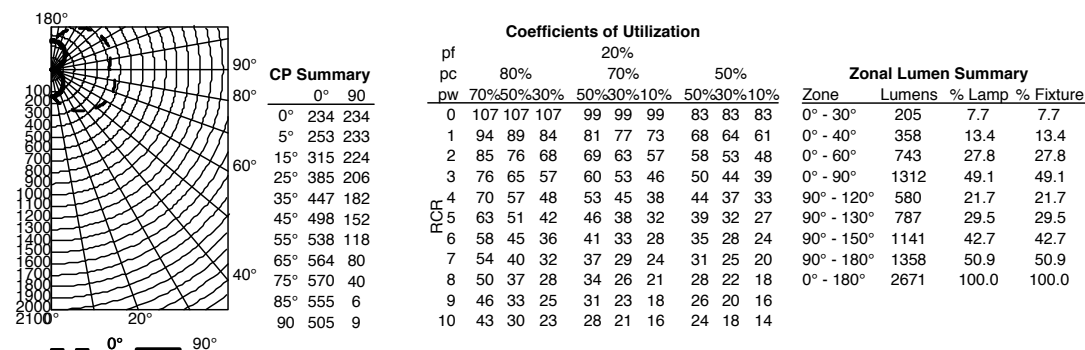
Distribution Data

Output Data

Coefficient of Utilization

Illuminance Data at 30" Above Floor for a Single Luminaire

FMVTSL 48IN, 3000K LEDs, input watts: 33.3, delivered lumens: 2,671, LM/W=80, test no. LTL29644M, tested in accordance with IESNA LM 79-80.



LIGHTING FACTS

