

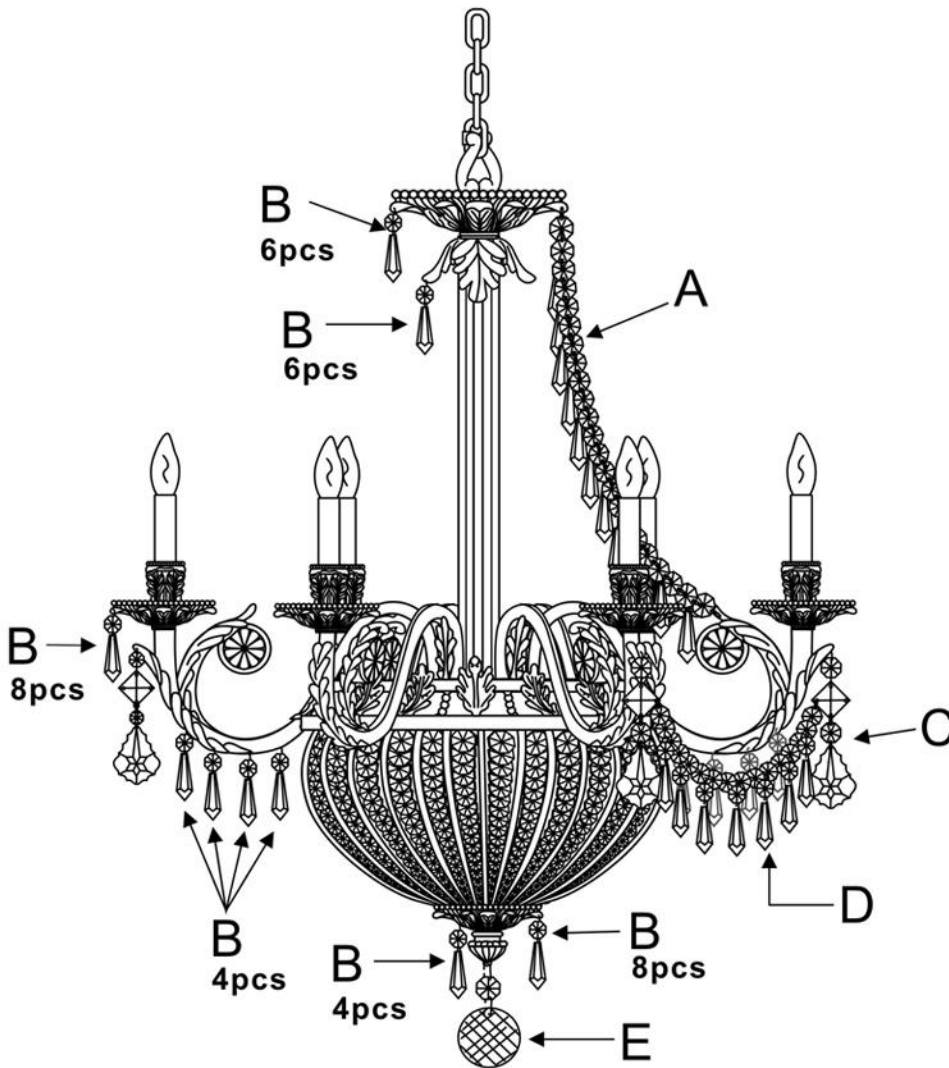
# ASSEMBLY AND DRESSING INSTRUCTIONS

**WARNING:**

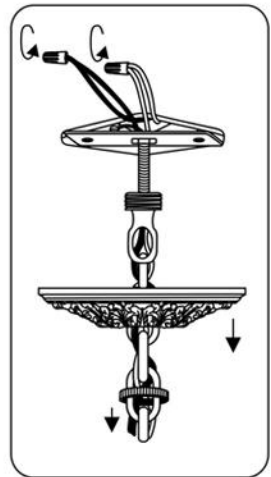


Electrical Danger    Turn Power Off


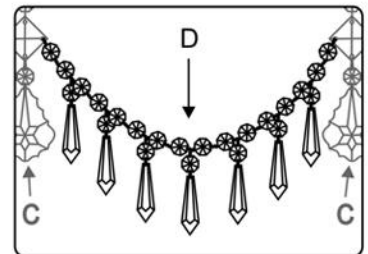
All electrical components must be installed by a licensed electrician in accordance with the National Electric Code and the appropriate local electrical codes.




You will need 9 - Cand. Bulb  
40 Watts Recommended  
60 Watts Max  
Bulb not included.



1 Bobeche  
with 8 B Trim.

- A=  (14mm \* 23pcs + 38mm \* 10pcs) \* 6sets  
(EVERY 2 JEWELS)
- B=  (14mm + 38mm) \* 96sets
- C=  (14mm + 18mm + 14mm + 76mm) \* 6sets
- D=  [14mm \* 16pcs + (14mm + 38mm) \* 7pcs] \* 6sets  
(EVERY 2 JEWELS)
- E=  (14mm \* 40mm) \* 1set