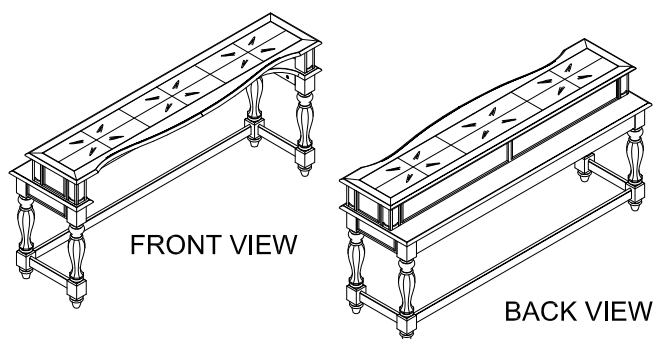


ASSEMBLY INSTRUCTION

DESCRIPTION: CONSOLE TABLE

Thank you for purchasing this quality product. Be sure to check all packing material carefully for small parts which may have come loose inside the carton during shipment. Identify and count all parts and compare with the parts List Below:

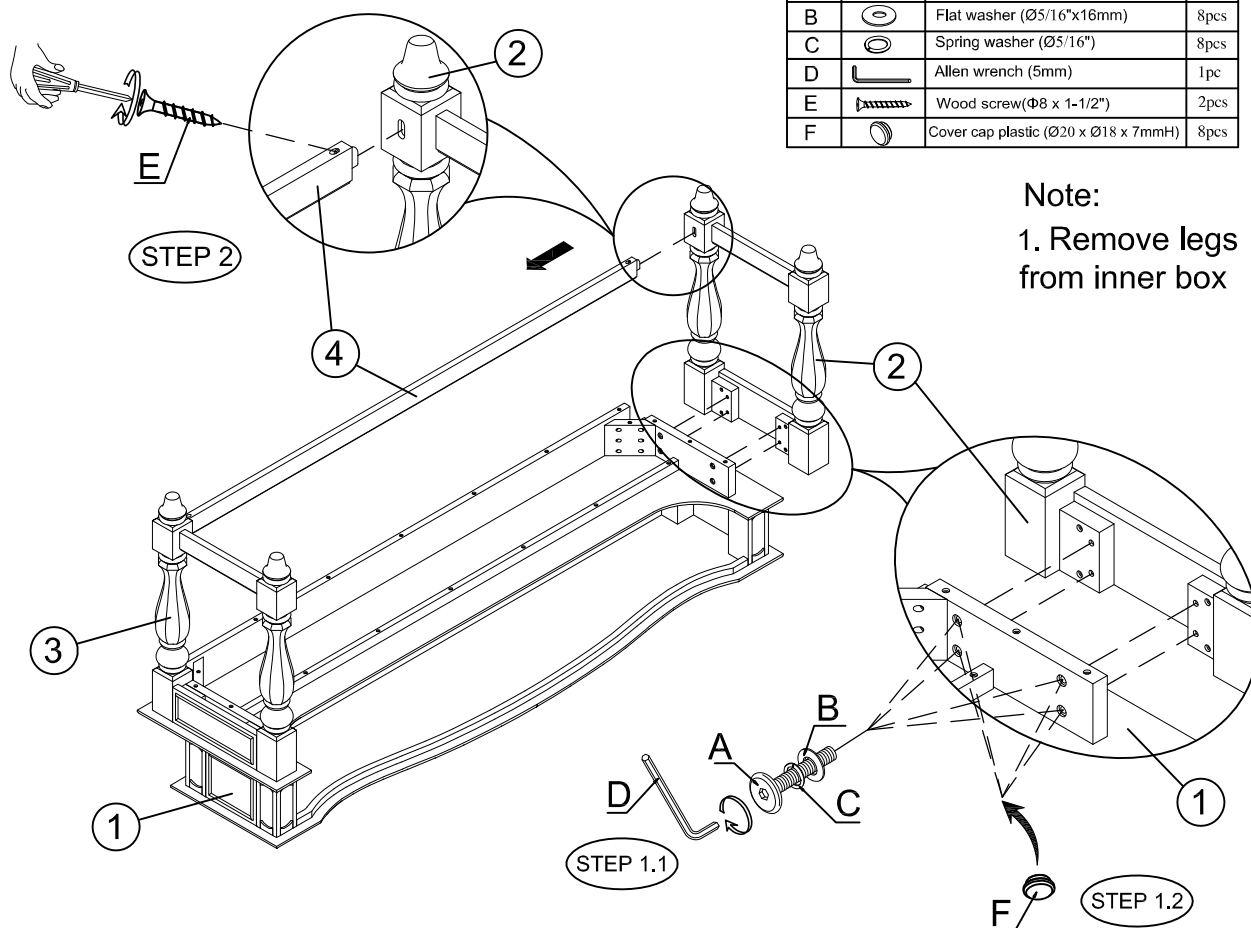


PART LIST:

①		②	
TABLE TOP :1PC		LEFT FRAME LEG: 1PC	
③		④	
RIGHT FRAME LEG: 1PC		STRETCHER:1PC	

HARDWARE LIST

NO.	Drawing	Description	Q'ty
A		Bolt Φ5/16"x1-1/4"	8pcs
B		Flat washer (Φ5/16"x16mm)	8pcs
C		Spring washer (Φ5/16")	8pcs
D		Allen wrench (5mm)	1pc
E		Wood screw(Φ8 x 1-1/2")	2pcs
F		Cover cap plastic (Ø20 x Ø18 x 7mmH)	8pcs



CLEANING INSTRUCTION

Clean the Console Table surface with a furniture polish and a soft cloth.

Made in VietNam