

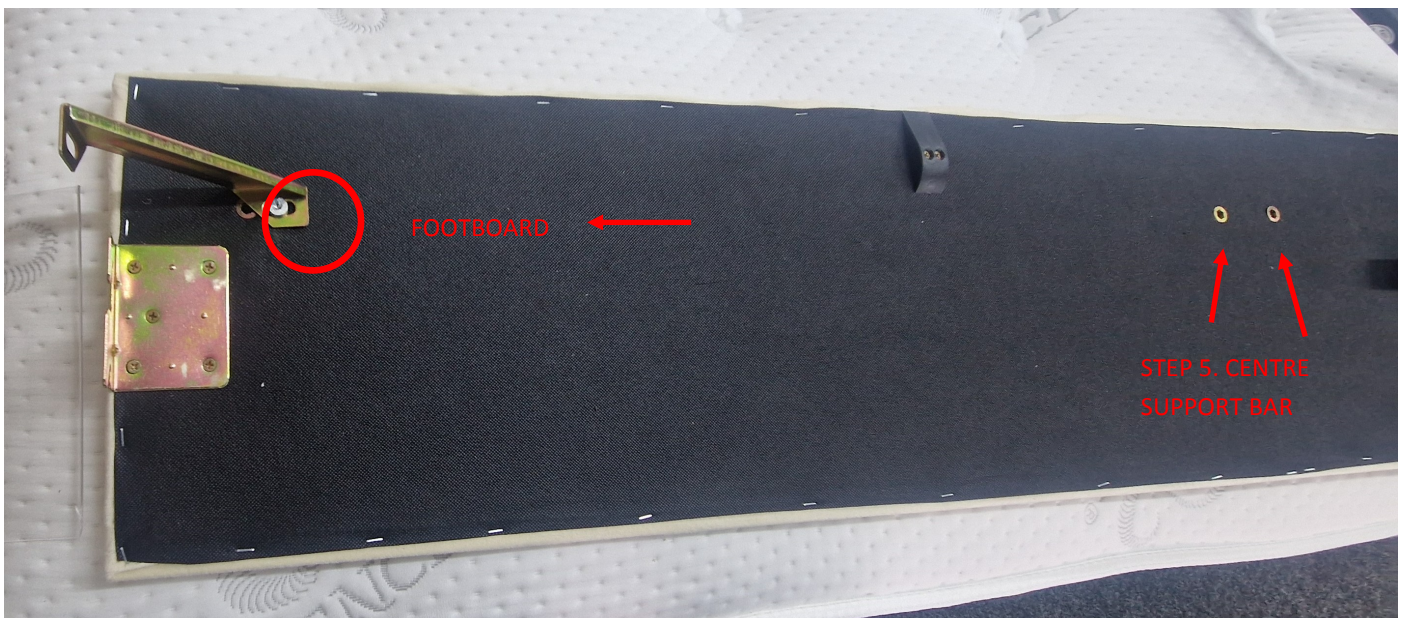


Step 1, DO NOT USE POWER TOOLS, After carefully unboxing the 2 boxes, the side rail box contains a box that has most of the hardware inside, there may be a bag of bolts loosely in the main side rail box look for those before disposing of the box these bolts are to join the center rail of the metal frame to the head and foot rail. Lay the side rail on a clean dry surface, find the corresponding hinge for that side rail, using 5x M8 X 30mm bolts (BOLT B) and 3 black spacers, place the spacer between the hinge and side rail on Hole 1, 3 and 5, on hole 2 and 4 just use just the bolt. and carefully tighten pay close attention to this photo which shows the location of the bolts. Don't over tighten the bolts as adjustment may be necessary at a later stage. Please repeat this step for the opposite side rail.



Step 2,

Locate the corner support bracket, this fix to the side rail, this will go on the foot side of the side rail which has 2 fixing points just above the bracket, we will be using the fixing point circled in red, using a M8 20mm bolt (BOLT A shortest bolt) there is no



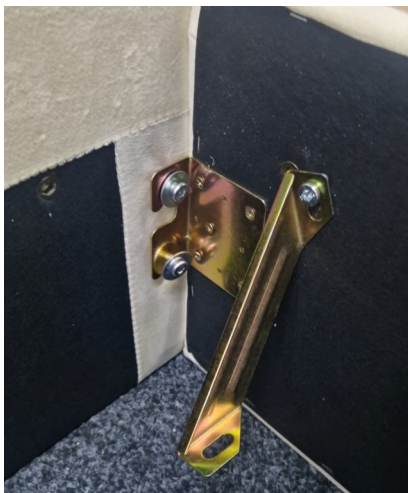
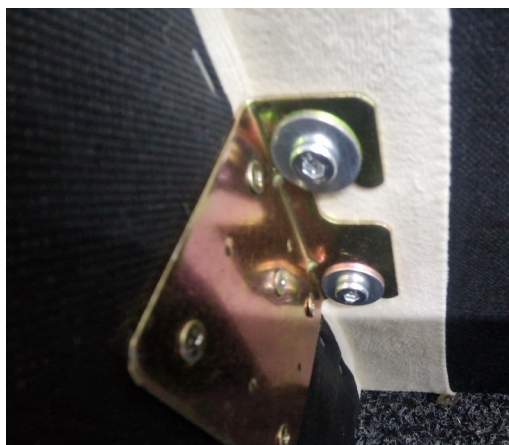
STEP 3

Once you have unpacked the headboard and Footboard, lean the headboard against a wall, you will need 4x m8 bolts (BOLT A the shorter length bolts). Attach the bolt to the fixing at the lower side of the headboard. 2 fixings to the left and 2 to the right, don't tighten yet because the hooks on the brackets on the side rail will slide between the bolt and the headboard, please do this for both sides and also for the footboard.



STEP 4

Now we can pick up a side rail and slot it into place, the corner bracket needs to be in the direction of the footboard, guide the siderail so the hooks on the headboard side of the side rail slot between the bolt and headboard and tighten the bolts using the allen key provided, also do the same on the footboard side, before tightening the footboard side bolts secure the angle bracket into the corresponding hole circled in red in the image above and then tighten the bolts.



Step 5, Locate the centre support bar, this is to go from 1 side rail to the other, the fixings are the holes next to the hinge mechanism, the bolts are a snug fit the bolts used are BOLT A (thick and short length bolt), attach the bolts to 1 side first only a few turns so the bolt stays in place then do the same for the other side and then tighten the bolts fully,



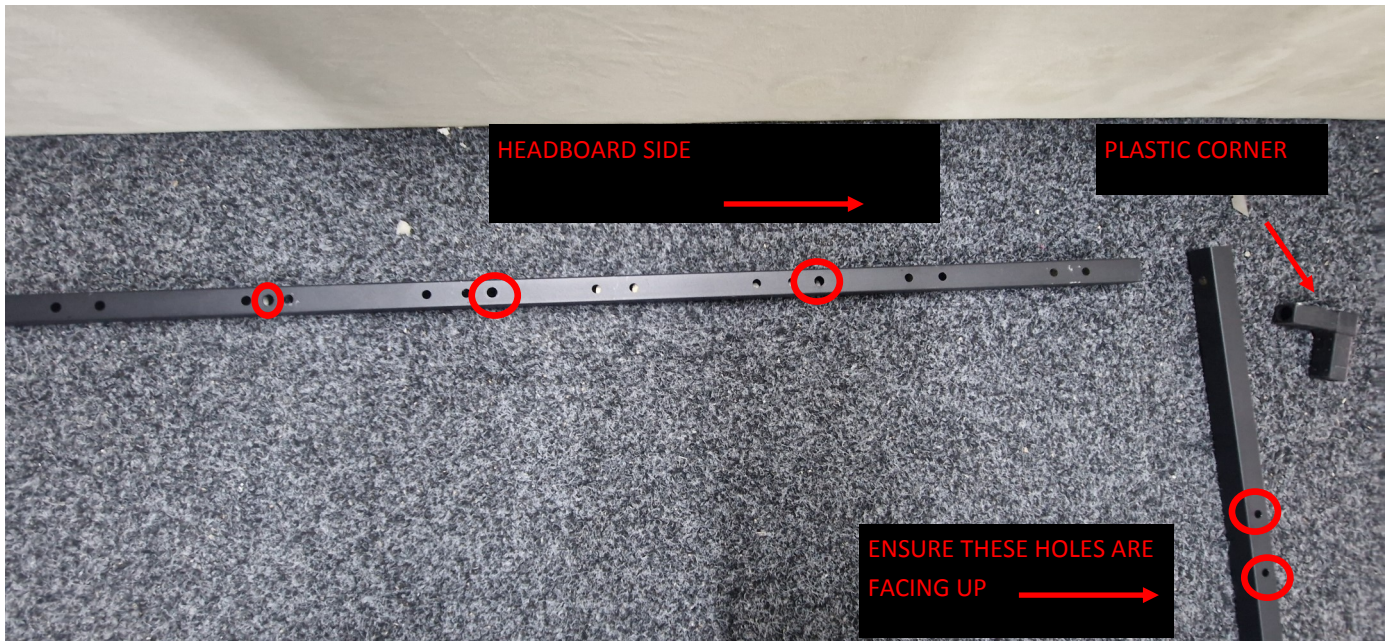
Step 6

Locate the angle bracket, and 2 X BOLT A (thick and short length bolts), the bracket will attach to the center of the footboard, the bolts should go through the bracket on the keyhole sides as the image below shows, don't tighten the bolts yet as the height may need to be adjusted when the bed is completed to ensure the ottoman frame sits on the corner brackets, center support and this angle bracket.



Step 7

Now we begin assembling the slat frame, locate the headboard and footboard bars and the left and right frame rails, (the left and right bars are interchangeable so doesn't matter which is used for what side same with the head and foot side bars.) the orientation for the left and right rails needs to be the same direction as the image below, the red circled holes need to face up, lay out the left, right , head and foot bars on the floor, use the plastic corners push 1 side of the corner into 1 rail and then the other side into the corresponding part, on the plastic corner there is a metal ball which should protrude out from the rail when pushed in fully and locks the rail in place. Do this for all 4 corners.



Step 8, Attach the center rail to the frame, locate the center rail, this is the wider piece of metal frame, this will attach with BOLT D ,2 bolts and nuts on the foot side and 2 on the headside, the bolts will enter from the head or foot rail and the nut will go on the inside of the frame securing the flange on the center rail to the head and foot rail. Once the center rail is fixed into positioned and tightened, we can attach the support legs, there are 2 support legs, these will attach to the center rail using NUT AND BOLT D and plastic spacers which help to reduce metal on metal vibration please look at the images below.



Step 9, Carefully carry the metal frame onto the bed and place it gently down making sure it is the right way round, the holes for the slat caps should be on the top and the orientation should match up with the bed, now the 3 circles marked in red are where the bolts will go through the frame and onto the top of the hinges, the image below shows the bolt locations on the hinges to use. You may need to move the hinge either towards the headboard or footboard so the holes match up from the rail to the hinge. Place the BOLT C Bronze bolts through the rail into the corresponding hole, once the bolts have gone through the left and right side then attach the nuts and tighten up, making sure the frame doesn't make contact with the footboard. Once happy tighten the bolts up.



Step 9, Now the frame is all complete and tightened up we can go ahead and attach the slats to the bed, there are 12 rows of slats x 2, 24 slats in total, you can start from either left or right, attach a single slat cap to the end of 1 slat and do this twice then the 2 ends that haven't got a cap attach the double cap which will join them together, the slats are sprung and should arch upwards while the connecting points on the slat caps should face down. Place the slat on the 1st row of holes on the rail and push from either left to right and that will secure the slat into position, repeat this process for the remaining 11 rows. Once complete attach the lifting strap to the footside of the rail. Attach the mattress stopper to the headboard side of the frame as the image below shows.



Step 10,

Carefully lift the metal frame up and attach the other end of the gas piston to the hinge by removing the foam protector and pushing the eyelet of the piston on to the bolt and tighten with the nut that was on there, do this for both sides, the frame may not stay down without a mattress on there, ensure the frame sits on the center support bar, the corner brackets and center footboard bracket when closed and use the self adhesive felt pads to reduce vibration and metal on metal sound. That's the bed complete, place your mattress over the bed and enjoy.

