
Clubhouse User Manual

For Round Propel Trampoline Models



**Assembly, Installation, Care, Maintenance,
and User Instructions**



WARNING



**READ THESE MATERIALS PRIOR TO ASSEMBLING AND
USING THIS TRAMPOLINE CLUBHOUSE**

Failure to assemble and use this Trampoline Clubhouse as specified in this manual will automatically void the warranty.

Do Not return this product to the store. Instead, please visit our website at www.PropelTrampolines.com where you will find our current contact information. Our friendly customer service staff can help you with any problems or questions that may arise during the installation, use, maintenance of your Trampoline Clubhouse.



Read all assembly, care, maintenance, and user instructions in this manual prior to installing and using this Trampoline Clubhouse.

Please save this manual for future reference and check our website for the latest manual revisions.

LIABILITY DISCLAIMER:

While every attempt is made to embody the highest degree of protection in all equipment, we cannot guarantee freedom from injury. The user assumes all risk of injury due to use, assembly, or transportation. All merchandise is sold on this condition. No representative of the company can waive or change disclaimer condition.

BEFORE YOU BEGIN

Thank you for purchasing a Propel Trampoline Clubhouse for your trampoline.

This trampoline Clubhouse comes equipped with warnings and instructions for its proper installation, care, maintenance, and use. This information must be read by all supervisors and users before any person is allowed to use it.

Follow all warnings in this manual. If you have any questions regarding these warnings, please contact us.

After reading this manual, if you have further questions, or if you would like to contact us, please visit our website at www.PropelTrampolines.com.

Warning

1. DO NOT jump inside of Clubhouse
2. Remove Clubhouse before stormy weather or precipitation
3. DO NOT Use flame or heat in or around Clubhouse
4. Use trampoline, trampoline enclosure, and clubhouse only with mature, knowledgeable supervision.

Current Trampoline Models

12 Foot.....	P12-6GE
14 Foot.....	P14D-BE
15 Foot.....	P15DA-RE
	PTSA15-RE
	PTSA15-108

The Clubhouse is model specific and will not work with any other model than for what it was intended.

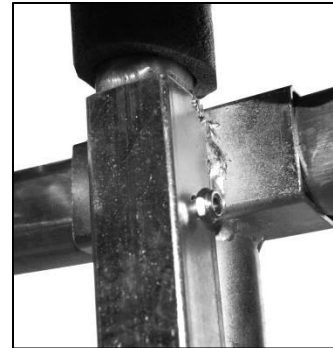


ASSEMBLY INSTRUCTIONS

IMPORTANT ASSEMBLY INFORMATION

- You will need a Phillips Screwdriver (not included), and an adjustable wrench (not included) to assemble this trampoline and enclosure net combination.
- Assembly requires two adults.
- Wear gloves to protect your hands from pinch points during assembly.
- When your trampoline was shipped, a thin film of oil was applied to all metal parts to extend the life of your trampoline. During clubhouse assembly be sure to wear clothing that will not be damaged or stained by any slight oil residue. When the trampoline is completely reassembled with the clubhouse, all metal parts with oil film will be covered.

Step 1 – Unsecure the Enclosure Poles from the Frame by un-attaching the bolts and nuts through the T-Brackets.



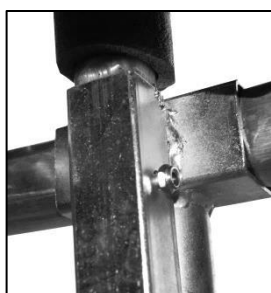
Step 2 – Lift the enclosure poles out of the t-bracket slots and lean them forward so they are resting on the jumping mat (as shown in the picture to the left).

Note: Remember where the enclosure entrance is located

Step 3 – Unfold the Clubhouse. Find the entrance of the Clubhouse and align it with the enclosure entrance. Pull the Clubhouse over the entire enclosure, poles, and trampoline.



Step 4 – Lift each Enclosure Pole and Clubhouse upright. (Make sure the Curved Section of the enclosure pole is facing outward). Insert the bottom end of the Post into its corresponding T-Bracket Slot. This will allow the Enclosure and Clubhouse to be completely erected from ground level. **DO NOT use any other method of assembly as it may result in personal injury and/or damage to the trampoline and clubhouse.** Repeat this process for the remaining Upright Posts.

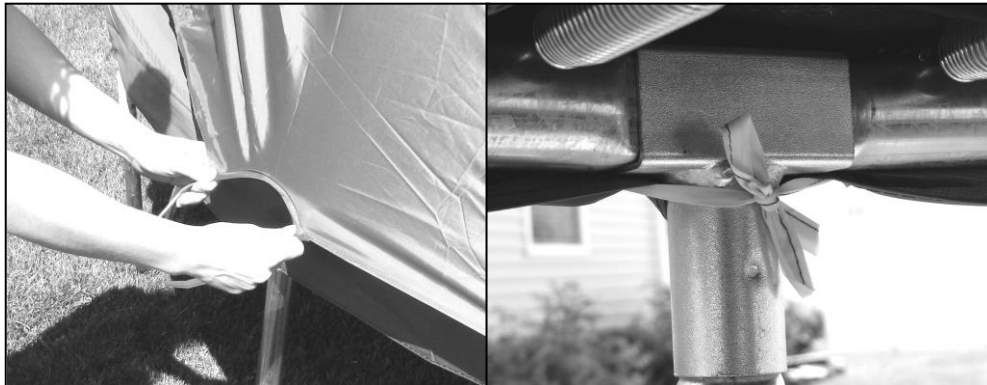



Step 5 – Secure the Enclosure Poles to the Frame by attaching the bolts and nuts that were removed in step 1 through the T-Brackets.

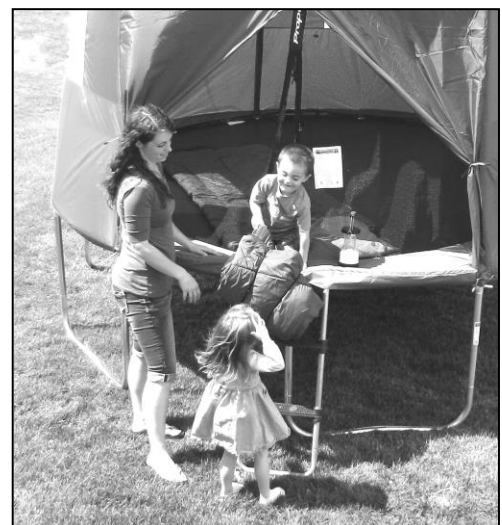
Step 6 – Open the entrance to the Clubhouse and Enclosure. Climb into the trampoline and align each corner of the Clubhouse to each enclosure pole.



Step 7 – On the outside of the trampoline and Clubhouse tie each corner to the T-bracket and Leg directly below.



 Make sure that all parts are securely attached. Familiarize yourself and all users of the trampoline Clubhouse with all safety precautions. Use the instructions, care, and maintenance materials in this manual before using the trampoline.



LIMITED WARRANTY

PROPEL warrants its trampoline products to be free from defects in material and workmanship under normal use and service conditions. The Propel Trampoline Clubhouse accessory is warranted for ninety (90) days from the date of purchase.

All warranty coverage extends only to the original retail purchaser from the original date of purchase. Our obligation under this warranty is limited to replacing or repairing the product at our discretion. All products for which a warranty claim is made must be received by us at one of our authorized service centers. Freight must be prepaid and accompanied by proof of purchase. All returns must be pre-authorized. This Warranty does not extend to any product, or damage to a product that is caused by or attributable to freight damage, abuse, misuse, improper or abnormal usage, act of God, storm damage, installation or use of accessories, repairs not performed by our authorized service center, and to products used for commercial or rental purposes. No other warranty expressed or implied beyond that specifically set forth above is authorized.

Propel Trampolines is not responsible or liable for indirect, special, or consequential damages arising out of, or in connection with the use or performance of this product. Propel is not responsible for other damages with respect to any economic loss, loss of property, loss of revenue or profits, loss of enjoyment or use, cost of removal or installation, and any other consequential damages. In the United States of America some states do not allow the exclusion or limitation of incidental or consequential damages. Accordingly, the above limitation may not apply to you.

The warranty extended hereunder is in lieu of all other warranties, and any implied warranty of merchantability or fitness for a particular purpose is limited in its scope and duration to the terms set forth herein. In the United States of America some states do not allow limitations on how long an implied warranty lasts. Accordingly, the above limitation may not apply to you.

This warranty gives you specific legal rights. You may also have other rights which vary from state to state in the United States of America.

Warranty Registration

Don't forget to register your trampoline by visiting www.PropelTrampolines.com/warranty. Registering your Trampoline clubhouse entitles you to receive all warranty benefits.

You may also register your Trampoline Clubhouse by mailing a copy of your sales receipt along with your name, address, phone number and the model number of your trampoline to:

Propel Trampolines
Warranty Department
41 East 400 North #324
Logan, UT 84321

www.propeltrampolines.com

MY TRAMPOLINE INFORMATION

In the event you need to contact customer service, such as to ask questions, order replacement parts, or file a warranty claim; you will be asked to provide some basic information about your Trampoline and Clubhouse Accessory. By writing this information in the spaces below and keeping this Manual in an accessible location, you can help expedite this process.

Staple or otherwise affix dated sales receipt here.

If it is necessary to file a warranty claim, you will be asked to provide a copy for proof of date of purchase.

— —

The following information can be found printed on the end of the box in which your Trampoline Clubhouse came.

Model or Item number: _____

MF Code: _____

Manufacturing Facility: _____