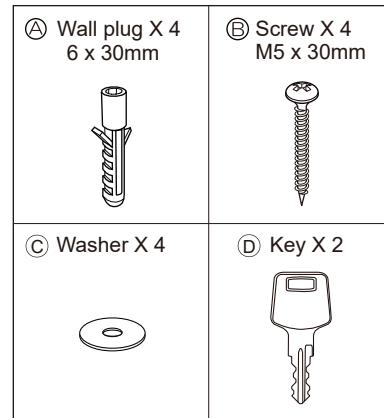
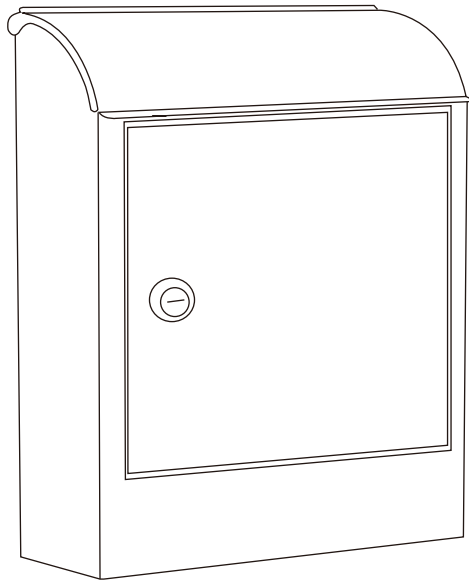
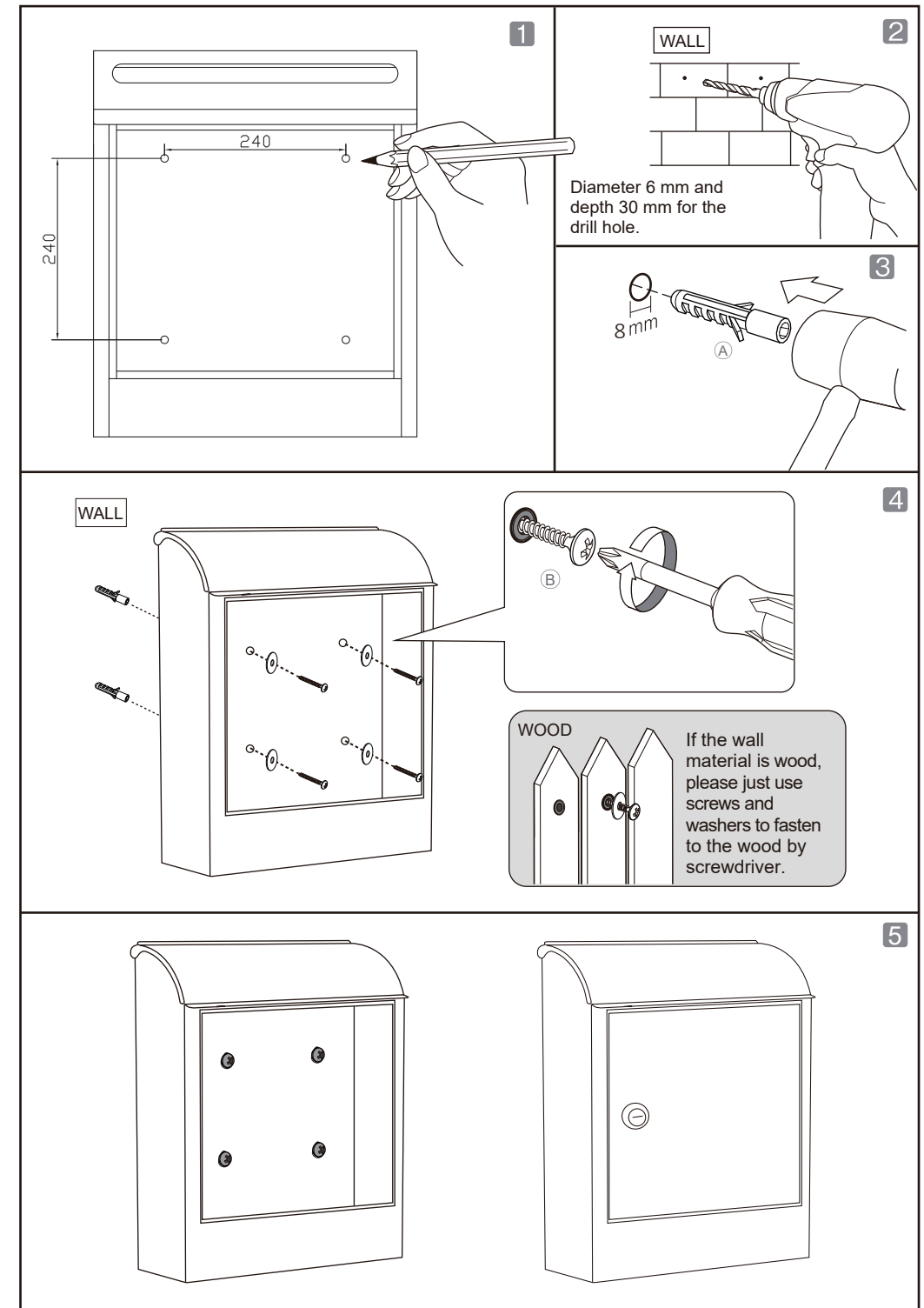


Model # WF-PB018

Instructions



11300 Trade Center Drive, Suite A
Rancho Cordova, CA 95742
www.QualArc.com



- 1 Put the parcel box on the wall then use a pencil to mark the position of the holes on the wall/wood.
- 2 Drill choice depends on wall material, masonry bits may be needed.
- 3 Drill the 8mm diameter deep 40mm at least holes in the wall.
- 4 Insert the wall plugs into the holes in the wall using a hammer or mallet as appropriate.
- 5 Install top two screws with washers. Place parcel box into screws. Do not tighten. Mark two bottom holes. Repeat step 4 for wall plugs if needed.
- 6 Line up the holes in the parcel box with the wall plugs, then use the screws to fasten the parcel box to the wall.