

1 × E26 Socket
Max.60W Bulb
(not included)

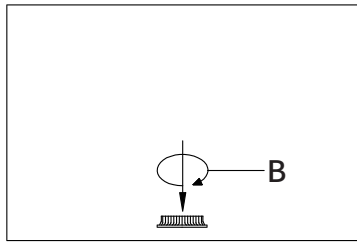
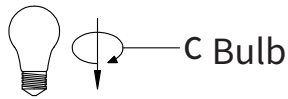
Just Scan the Below Code
for Installation Video



Installation Video

336W

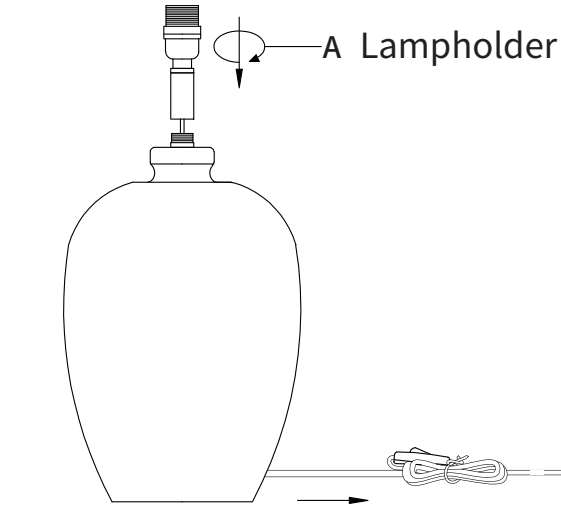
Installation Steps



Fixing Ring

Open the packaging and make sure all parts are in good condition.

Step 1: Screw Lamp Holder (A) onto Lamp Base.



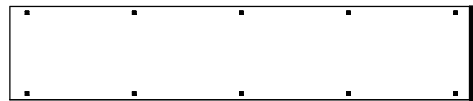
Lampholder

Step 2: Assemble the Lampshade and screw the fixing ring(B)

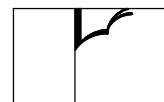
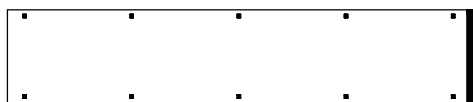
Step 3: Install a Bulb (C).

Step 4: Plug in the power source and turn on the light.

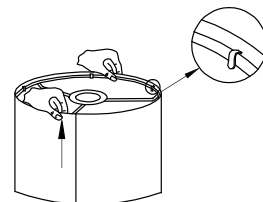
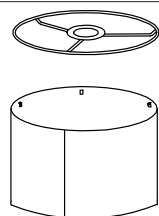
How to assemble the lampshade: put the top ring and bottom ring into built-in clamps, and fix the joining end of the lampshade.



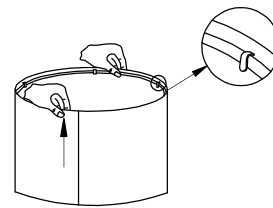
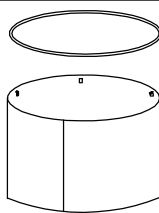
①



②



③



④

