

KX-907BH Infrared Sauna

Installation & Owner's Manual

Please read this entire manual thoroughly before proceeding with the assembly.



PRECAUTIONS AND INSTRUCTION

ATTENTION

Please read all instructions thoroughly before using.

Serious injury may result if ignore the following warning and instruction.

Basic precautions should always be followed when using this electrical equipment.

DANGER

To avoid the risk of causing burns, fire, electric shock, or other injuries:

- Connect the power cord to a properly grounded outlet.
- Using only for its intended use as described in this manual.
- Don't use accessories not recommended by the manufacturer.
- Please disconnect the power after using.
- Please keep the electrical cord away from heated surfaces.
- If the sauna is faulty, the supply cord or plug is damaged, please stop using it immediately.

WARNINGS

- Don't stay longer than **one hour**.
- Don't put the sauna on a **humid** environment.
- Don't touch the heater directly with hands or body for a long time.
- Don't use any sharp tools on or near the heaters (severe damage may result).
- Placing the sauna on a **flat** surface.
- Unauthorized disassembly of the sauna is **prohibited**.
- People with health problems should consult a physician for prior to using the sauna. (Including acute diseases, malignant tumors, high blood pressure, heart disease, allergic dermatitis, pregnancy, etc.)
- This product is not intended for use by person (including children) with reduced physical, sensory or mental capabilities, or lack of adequate experience

knowledge, unless they have been given supervision or instruction concerning use of the appliance by a person responsible for their safety.

- Using a sauna after taking alcohol, drugs, or medication can **lead to hyperthermia** and increase the risk of death.
- If you are feeling uncomfortable, exit the sauna immediately and consult a doctor.
- Children should be supervised to ensure that they do not play with the appliance.

HYPERTHERMIA

Prolonged exposure in the sauna may cause hyperthermia. Hyperthermia occurs when body's core temperature rises above 98.6F. Symptoms of hyperthermia include a rise in body temperature, dizziness, lethargy, drowsiness, and fainting.

The effects of hyperthermia may include:

- a) Failure to perceive heat / Unawareness of impending heat
- b) Failure to recognize the need to exit the sauna
- c) Fetal damage in pregnant women
- d) Physical inability to exit the sauna
- e) Unconsciousness

Installation Guide

Each panel is heavy, especially the top panel. Be careful to avoid injury when installing. This sauna requires at least 2 adults to complete assembly. The panels should be install in the following order:

Floor Panel → Rear Panel → Left Panel → Right Panel → Bench Support Panel → Bench Surface Panel → Front Panel → Ceiling Panel

Step 1: Position the Floor Panel

Place the floor panel **on a flat surface**. Before assembly, make sure the floor is flat so that you can maintain a comfortable subsequent installation. (image1)



image 1



image 2

Step 2: Position the Rear Panel

There are two rear panel. You should lift the bigger rear panel into position wedging the bottom of the panel into the channel in the floor panel, you can gently rest the rear panel against the wall of your home. (image 2)

Step 3: Position another Rear Panel

Then place the small panel into the slot of the floor panel and push it towards the bigger rear panel. Check whether the hooks of the fasteners are up or down, and the fasteners are connected together as shown. (image 3)



image 3

Step 4: Position the Right Side Panel

Place the Left & Right Panels into the slot of the floor panel and push it towards the two rear panel. Please check if there is almost no visible gap, then it is already fixed.



image 4



image 5

Step 5: Place the Bench Support Panel



image 6

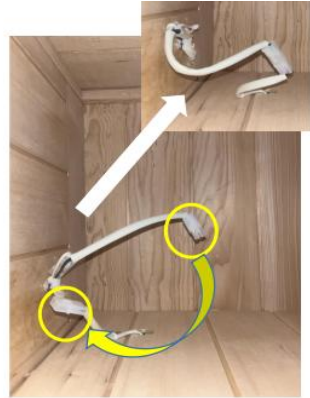
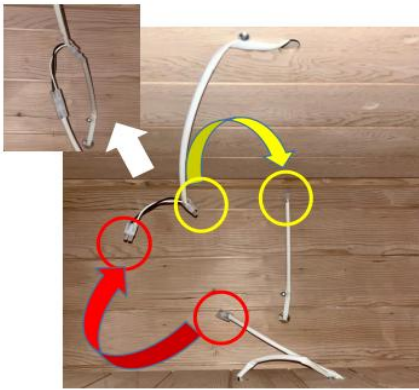


image 7

There are two bench support panels. Please place the longer bench support panel into the tenon of the big rear and left panels firstly (image 6), then place the another into the tenon of the longer support panel and right panel (image 7).

Step 6: Connect the wires

Every two wires have corresponding unique interface shape, hear a click to indicate that the connection is ready



Step 7: Place the Bench Surface Panel

Please make sure to always install the Bench Surface Panel before installing the Front Panel, otherwise it will not fit inside due to space limitations. (image 9)



Step 8: Place the Front Panel



Place the front panel into the slot of the floor panel and push it towards the side panels. Then go inside the sauna and check if the gap is almost invisible.

Step 9: Install the Ceiling Panel and Connect the wires

Place the ceiling on top of the sauna. Make sure that all panels are in the slots in the ceiling panel. Make sure that all wires on the side panel pass through the holes. Finally, connect all the wires in the ceiling panel.



WARNING: Pay attention to the risk of electric shock. Don't connect the power supply until all wires are properly connected



Congratulations! Installation completed!
Plug in and power on to enjoy your sauna!



Other Functions



Bluetooth

:BT SPEAKER



LED lamp

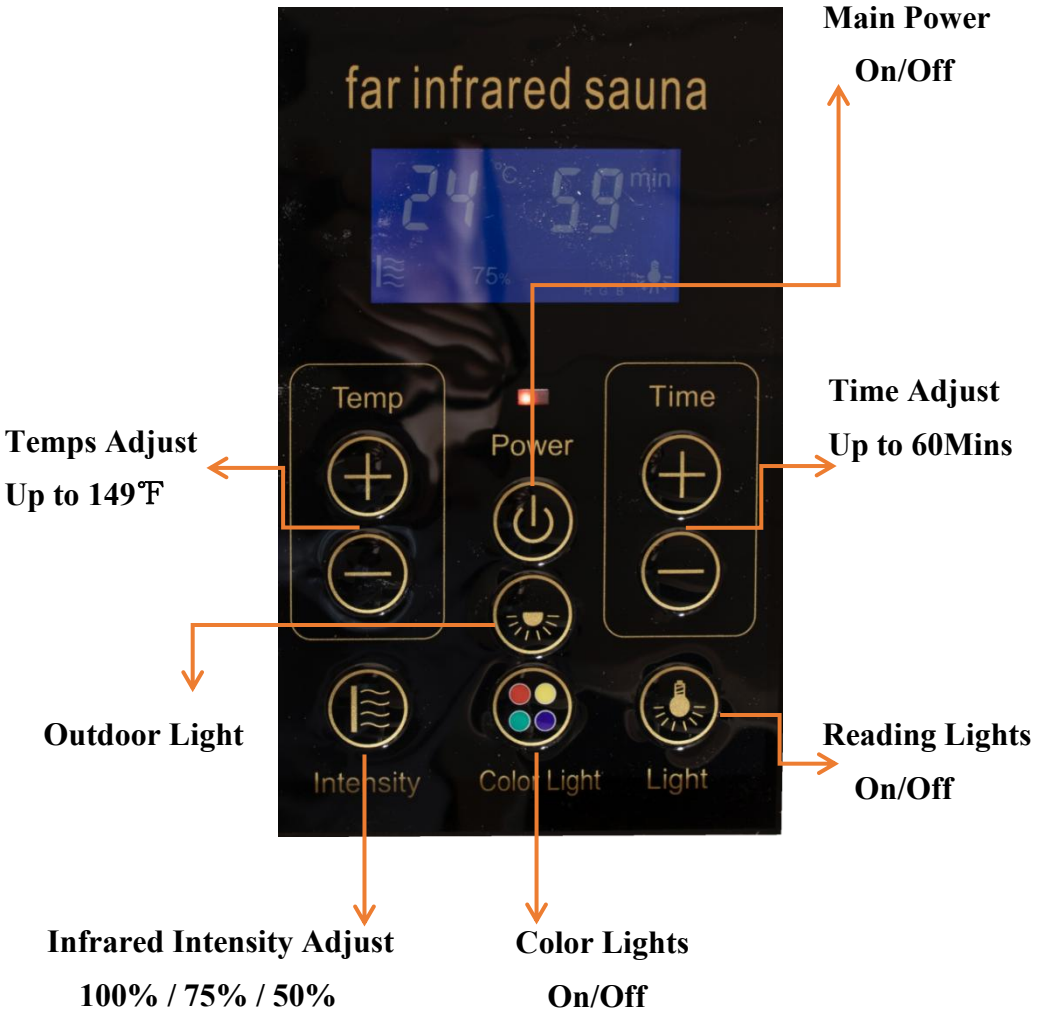


Color Lamp



Vent

CONTROL PANEL INSTRUCTION



SPECIFICATIONS

Product Name	Far Infrared Sauna
Model	KX-907BH
Dimensions	47.3*47.3*75.2 in
Voltage	110-120VAC
Plug Type	15Amps
Wattage	1600W
Number of Heaters	7 pcs
Raw Material	Hemlock
Location	Indoor