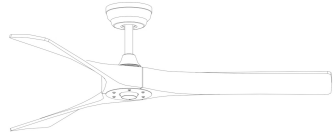


## Creative design

# Multi-Scenario

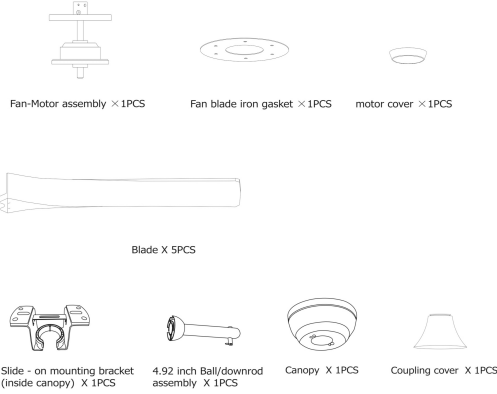
## Ceiling



## DEROCATE CEILING FAN

### User Manual

### Pre-Installation

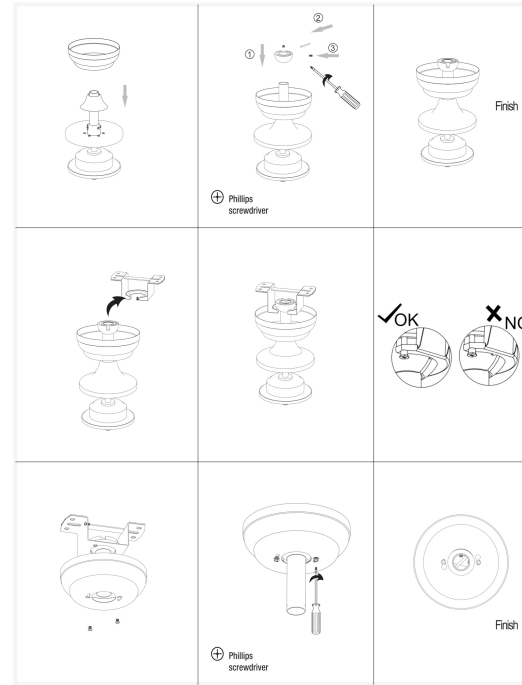


### Parts Kit

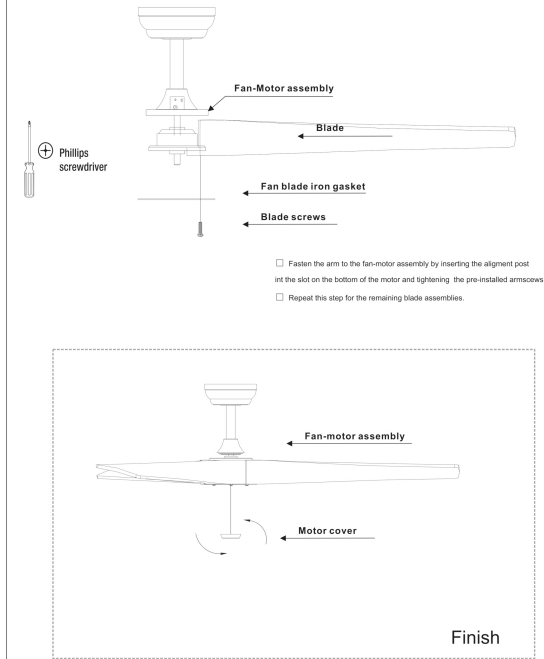


**NOTE** Hardware not shown to actual size.

### Install downrod assembly

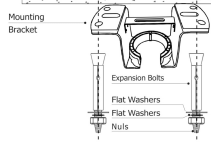


### Fastening the blade arms to the motor



### Installation of the hanging bracket

#### CONCRETE CEILING



For concrete ceiling, use the percussion bit with diameter 8mm to drill holes according to the length of expansion screws. Then use the attached expansion screws to fix the hanging bracket onto the ceiling (selection is made according to actual requirements of the customers).

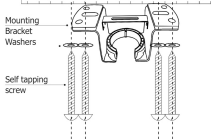
#### STEP 1 A-CONCRETE CEILING

SWITCH OFF THE ELECTRICAL MAINS AT THE CIRCUIT BREAKER FUSE BOX.

- 1) Use the Mounting Bracket as a guide, mark the spots where the 4 Expansion Bolts will be drilled.
- 2) Remove the Mounting Bracket, drill 2 holes and insert 2 Expansion Bolts into the concrete ceiling, install the mounting bracket and secure with Flat Washers, Spring Washers and Nuts.

**IMPORTANT : SCREWS & NUTS MUST BE TIGHTENED TILL SNUG**

#### WOODEN CEILING



For wooden ceiling, use wood screw to drill on the wooden beam or the "junction box" to fix the hanging bracket (selection is made according to actual requirements of the customers)

#### STEP 2 A-WOODEN CEILING

SWITCH OFF THE ELECTRICAL MAINS AT THE CIRCUIT BREAKER FUSE BOX.

- 1) Use the Mounting Bracket as a guide, mark the spots where the 4 Self Tapping Screws will be drilled.
- 2) Remove the Mounting Bracket, drill 4 holes for 3MM diameter, install the mounting bracket onto wooden ceiling with the 4 Self Tapping Screws & Washers

### Install downrod assembly



#### Hang the fan



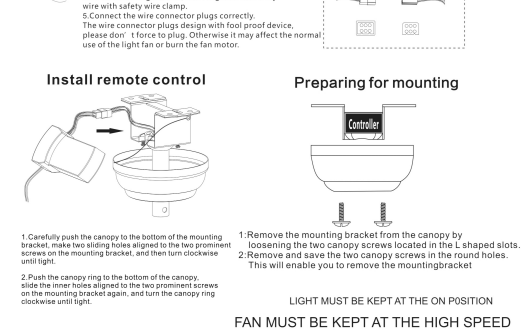
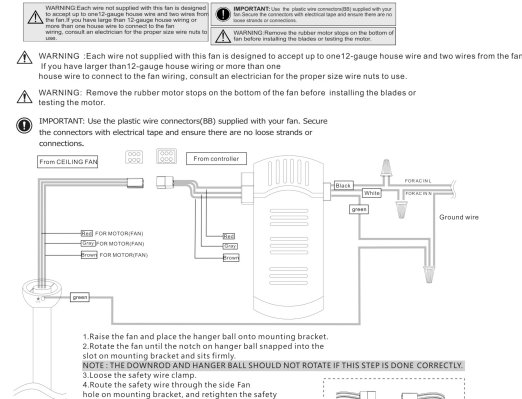
- Carefully feed the motor wires up through the downrod
- Align the holes and replace hanger pin and locking pin.
- Tighten the two color setscrews.
- Slip coupling cover, canopy cover and canopy onto the downrod.

#### Install canopy



- Lift the fan motor assembly up to the mounting bracket and seat the hanger ball in the mounting bracket socket. Rotate the fan motor assembly until the check groove drops into the registration slot and seats firmly. The downrod should not rotate if this is done correctly
- Ensure the loosened screws is inserted into the key holes on the mounting bracket.
- Carefully raise the canopy up to the mounting bracket. Rotate the canopy clockwise.
- Secure the canopy by replacing the screws previously loosened and tightening the screw vertically
- Place the canopy cover (if applicable) and rotate the canopy cover clockwise until it locks into position.

### Making the electrical connections



### Use of remote control

#### FUNCTION INSTRUCTIONS:

- 1) ECO mode
- 2) Natural wind
- 3) Fan speed control/ Fan on
- 4) Fan off
- 5) Wind downward
- 6) Mute
- 7) Wind upward
- 8) Timer

#### Note:

Remote control pairing: Turn off main power for one minute; Turn on power, within 10 seconds, press "Fan off" button (4) until hearing "beeb" sound, pairing successful!

If the remote control is not working

1. Please check if the batteries installed correctly.
2. Exclude using same kind of remote controls nearby.
3. Please check if the main power within the rated power.

