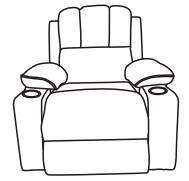


Lift Recliner Assembly Instructions

Estimated Assembly Time in Minutes

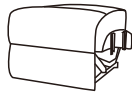
★ ☆ ☆
 <15 <45 60+

- Your recliner comes packaged in one box.
- **DO NOT** use any sharp objects to open plastic wrapped components as damage to product or components may result.
- Carefully remove all of the components from the packaging and set aside for assembly.
- Assemble on a soft surface to prevent scratching the finish.
- Zip ties are used to secure your recliner cords and avoid damage - do not cut.



Part List-A

A 1 x Seat



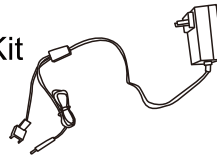
B 2 x Back Wings



C 2 x Arm Pads



D 1 x Power Kit



E Remote Control



F x2 Cup Holder

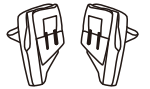


Part List-B

G 1 x Back

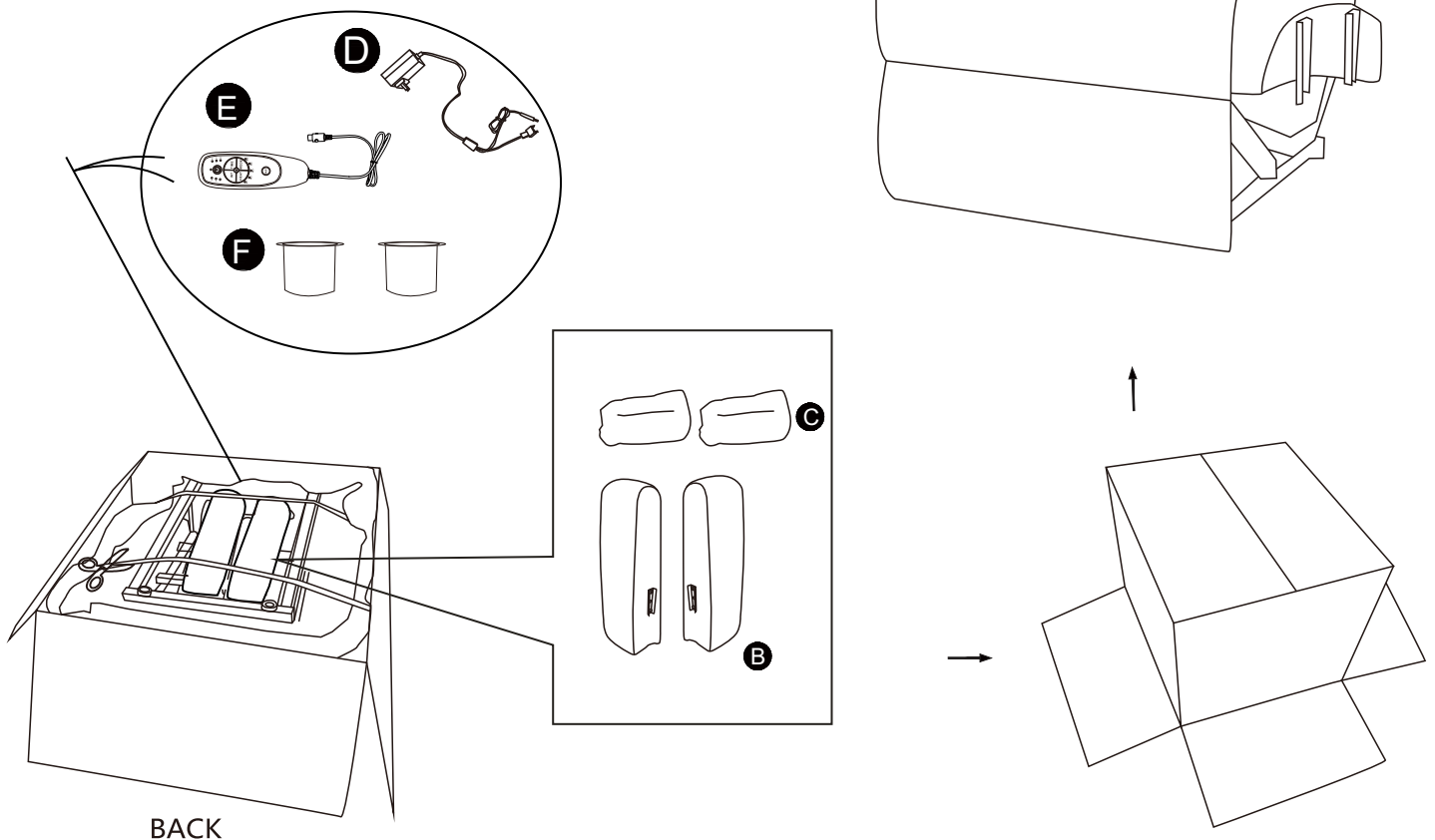


H 2x Arm



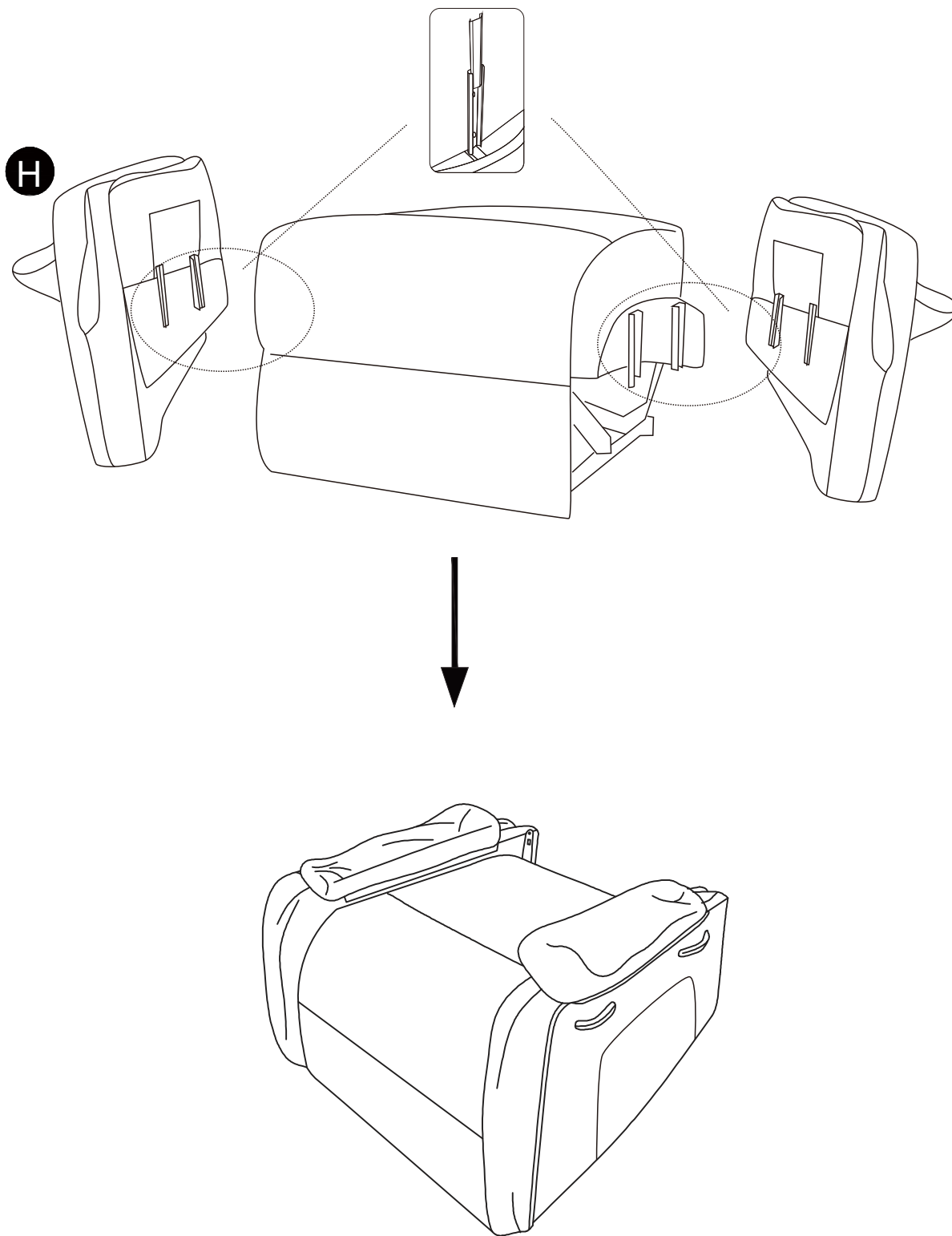
Assembly

Step 1



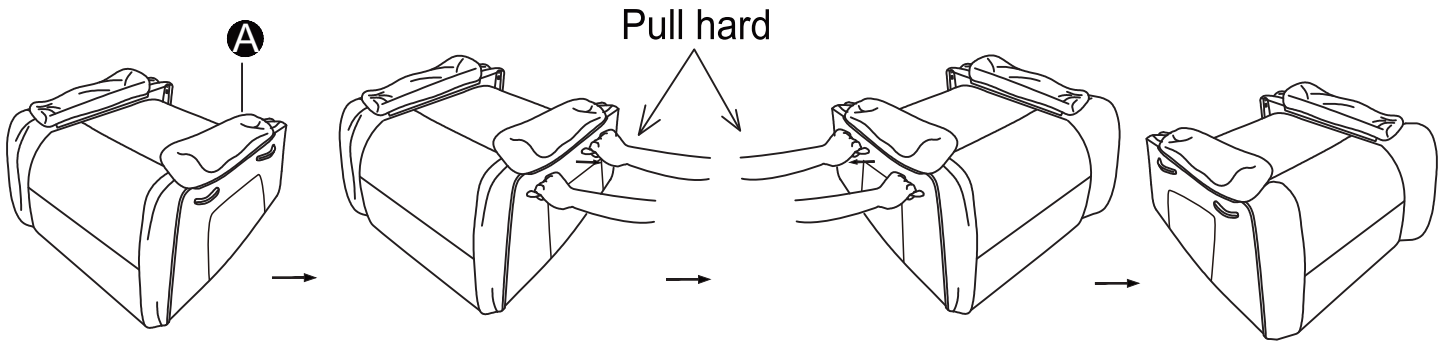
Assembly

Step 2



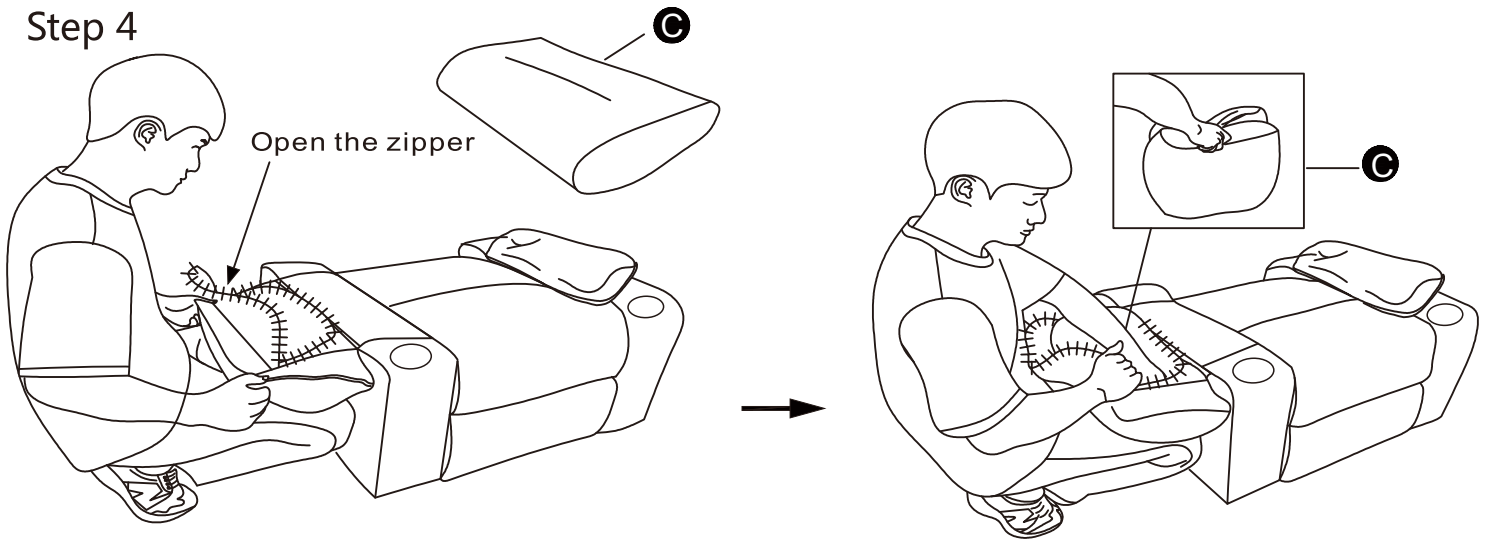
Assembly

Step 3

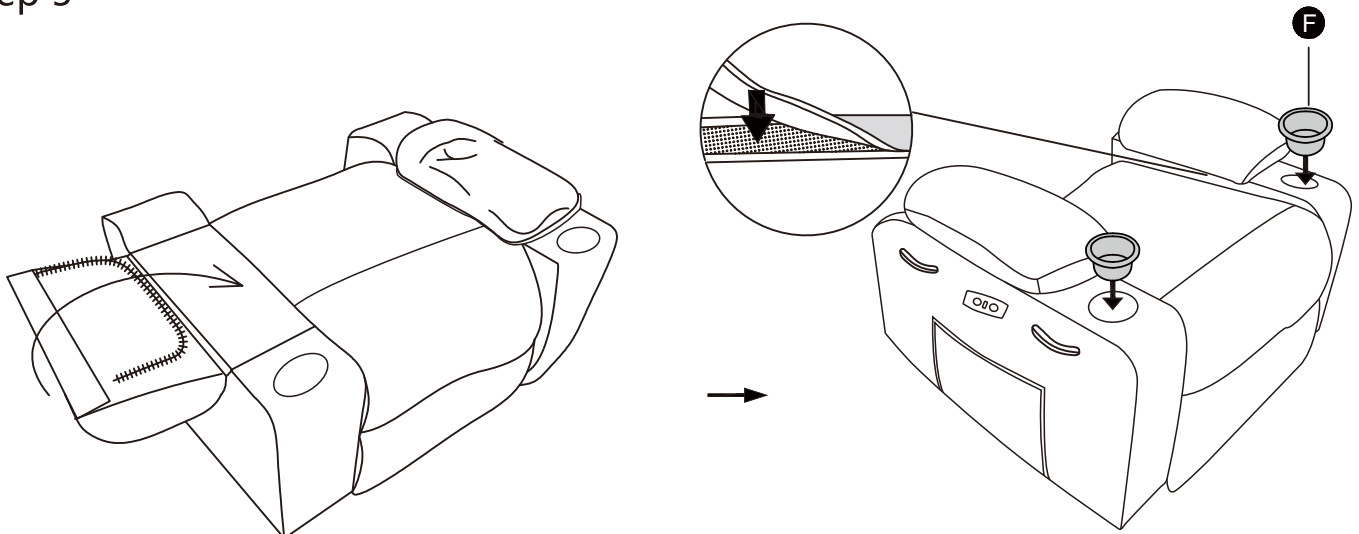


Hold the handle of the arm and pull hard to make it stretch out.

Step 4

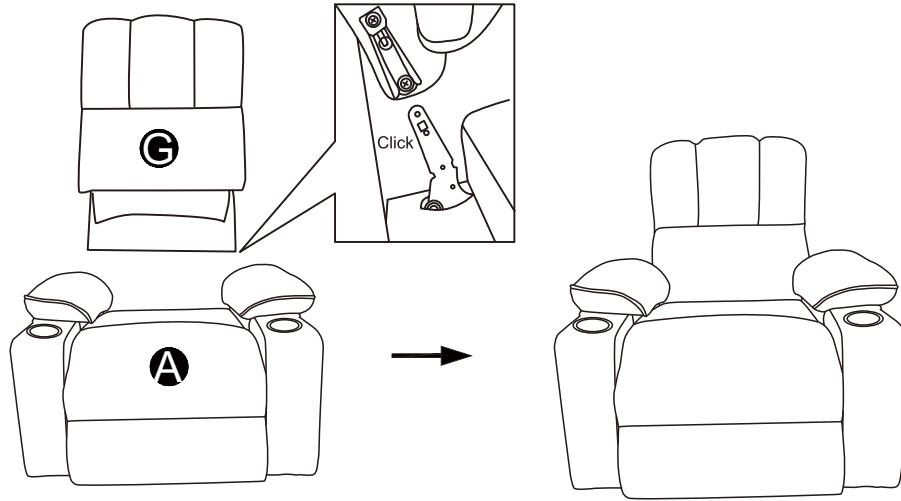


Step 5

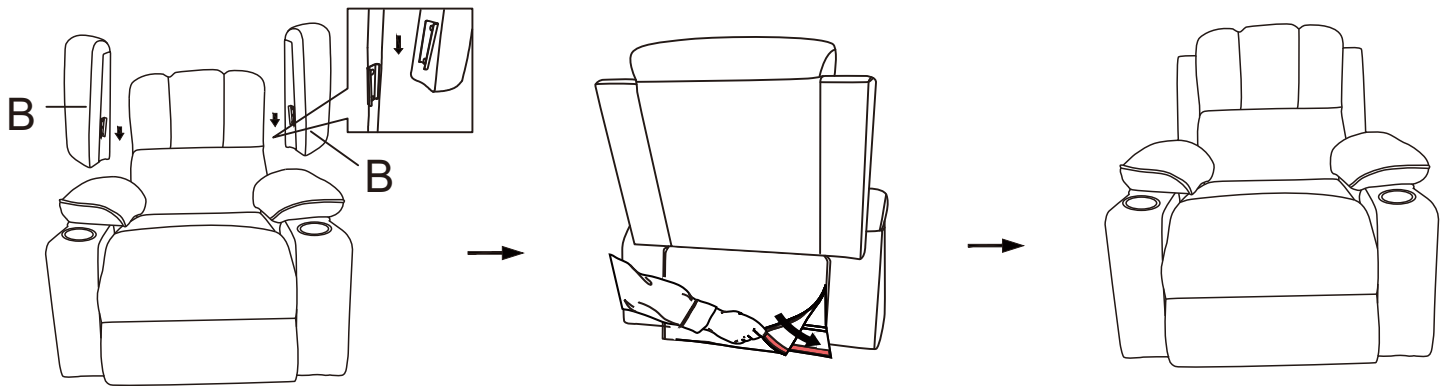


Assembly

Step 6

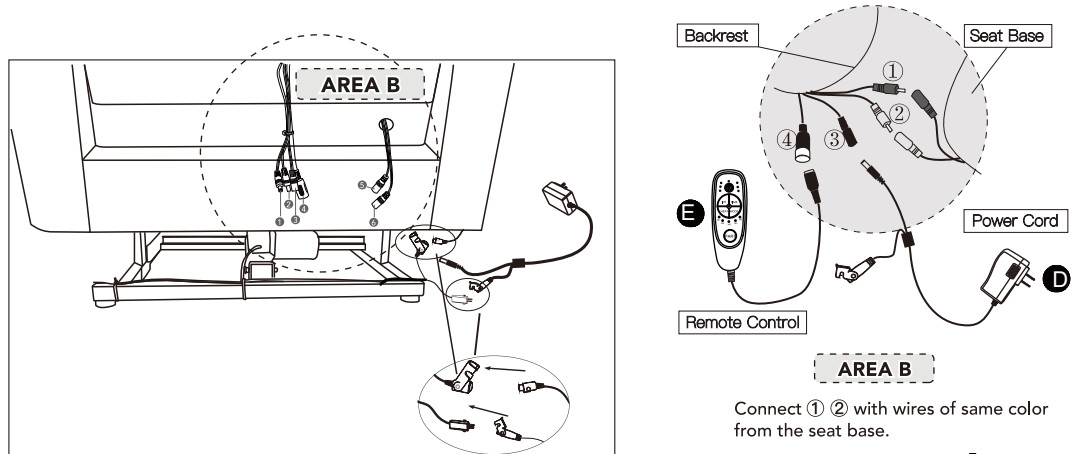


Step 7



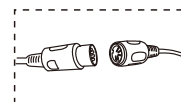
Step 8

The method of connecting the cables.



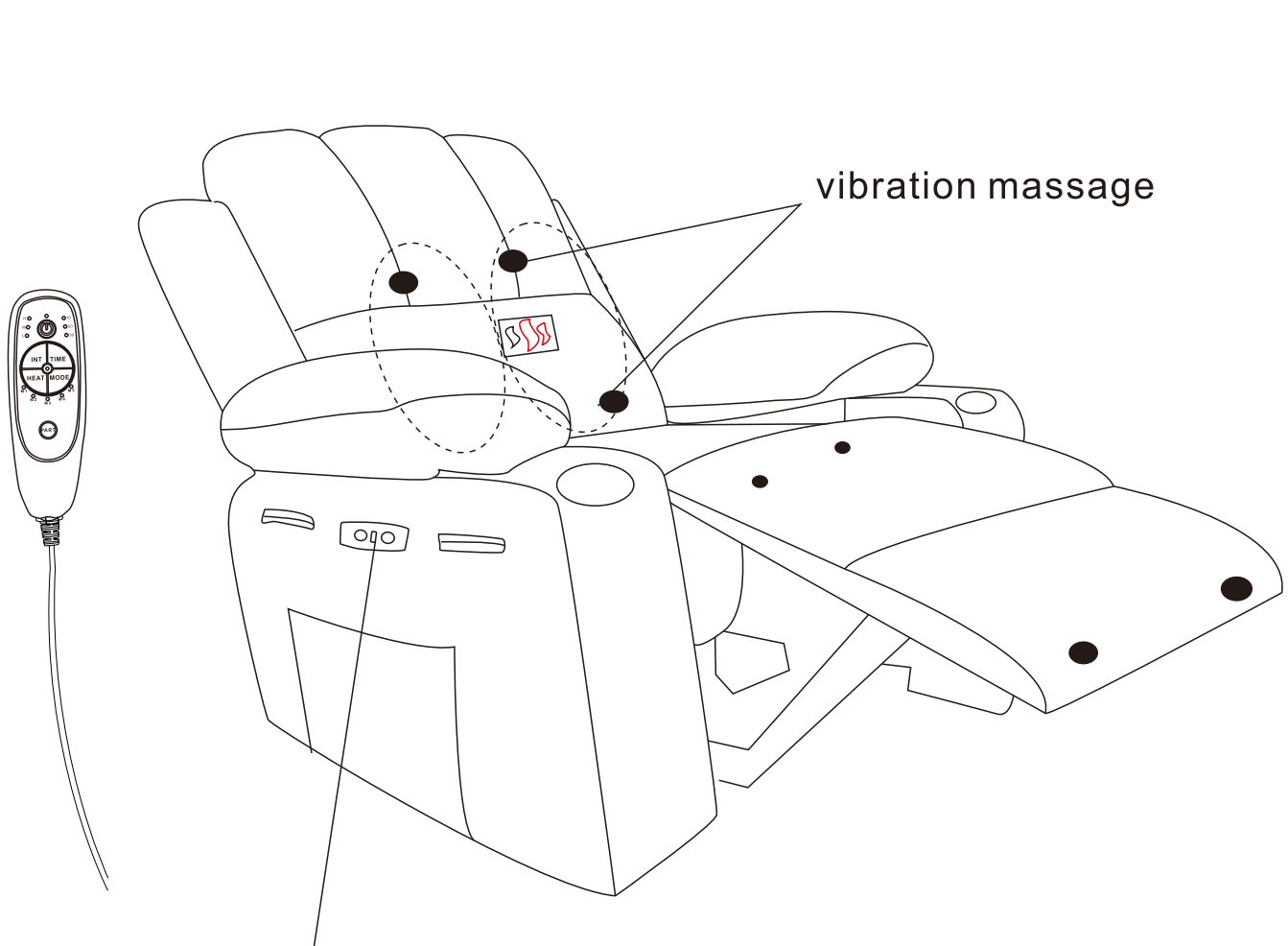
Connect ① ② with wires of same color from the seat base.

Connect ③ with Power cord ④ and ④ with Remote control ⑤.



Assembly

Step 9



Notice:

1. Power. Plug the power cord into a power source.
2. Recline the backrest and raise the legrest. Press once the Recline & Legrest button to recline and lift the legrest to the desired position.
3. Press the RST button once to restore the chair state.