

# INSTRUCTIONS

## Step 1:

- Attach two Plastic A feet to part ③ side. Repeat.
- Insert two part ② bars into Plastic A feet.

## Step 2:

- Slide Interlayer onto part ② bars.
- Put the smooth surface upwards.

## Step 3:

- Attach assembled side to exposed part ② bars.

## Step 4:

- Insert four part ① supports into Plastic A feet.

## Step 5:

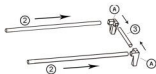
- Repeat Step 1 to Step 4.
- Attach ten assembled parts together.

## Step 6:

- Attach two Plastic B feet to part ③ side. Repeat.
- Attach assembled side to exposed part ① bars.

## Notice:

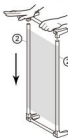
- Make sure that the connection between plastic and tube are tight enough. Please press hard while assembling.
- Remove your shoes before you move the shoe rack. Otherwise the joint may loosen.



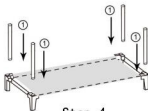
Step 1



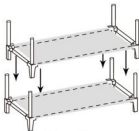
Step 2



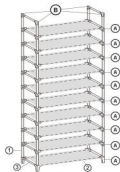
Step 3



Step 4



Step 5



Step 6

No.	Article	Qty
①		40
②		20
③		22
Interlayer		10
Plastic A		40
Plastic B		4