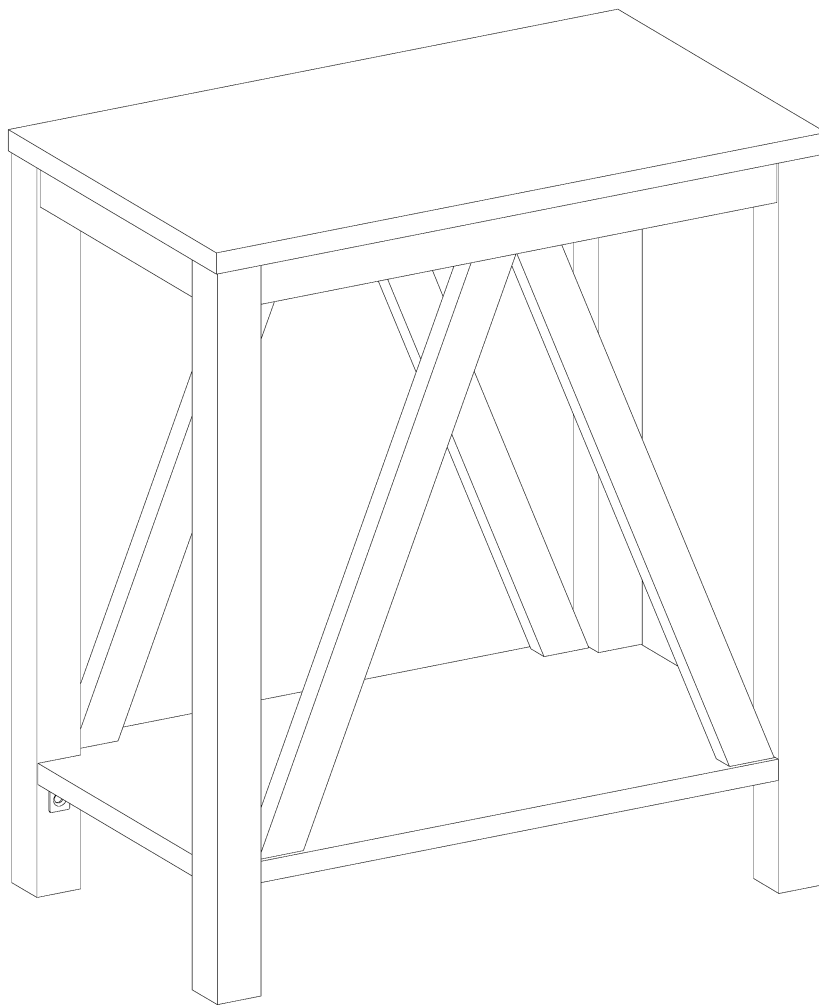


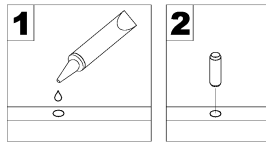
# Assembly Instructions



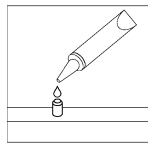
© 2023 [Company Name]. All rights reserved. For more information, visit [Website].

# General Assembly Guidelines

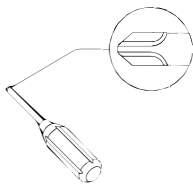
- I. Ensure that all parts and hardware are available before beginning assembly.
- II. Follow each step carefully to ensure the proper assembly of this product.
- III. Two people are recommended for ease in the assembly of this product.
- IV. The three main types of hardware used to assemble this product are: wood dowels, screws and bolts.
- V. The provided glue is to secure wood dowels in place. When first inserting dowels, locate the appropriate hole for the dowel, place a small amount of glue in the hole and insert the dowel. Wipe away excess glue immediately.



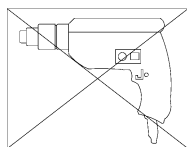
In future assembly steps when dowels are necessary to attach assembly parts together, place a small amount of glue on the end of the dowel before attaching parts together. Wipe away excess glue immediately.



- VI. A Phillips head screwdriver is required for the assembly of this product .

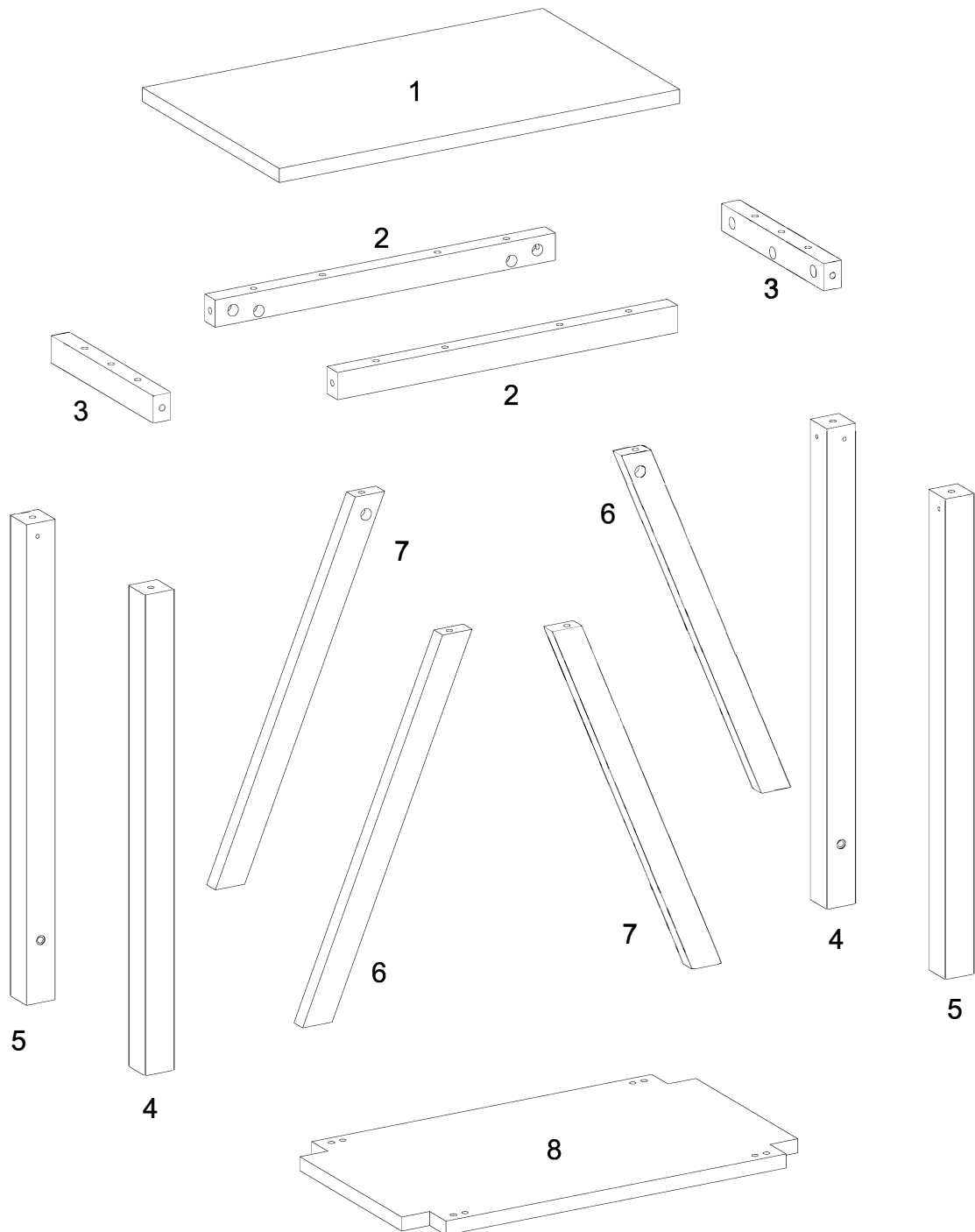


- VII. Power tools should not be used to assemble this product.








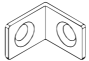



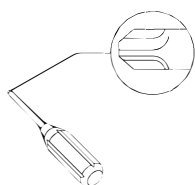
- VIII. Drill may be needed for securing product to wall.

# Parts List



# Hardware List

A		Ø8x30mm	Wooden dowel	16 pcs
B		Ø15x11mm	Cam lock	18 pcs
C		Ø6x35mm	Cam bolt	18 pcs
D		Ø6x50mm	Screw	4 pcs
E		M 4	Hex Key	1 pc
F		M6x15mm	Bolt	8 pcs
G		Ø30mm	Sticker	18 pcs
H			Connecting iron sheet	4 pcs
J			Glue tube	1 pc

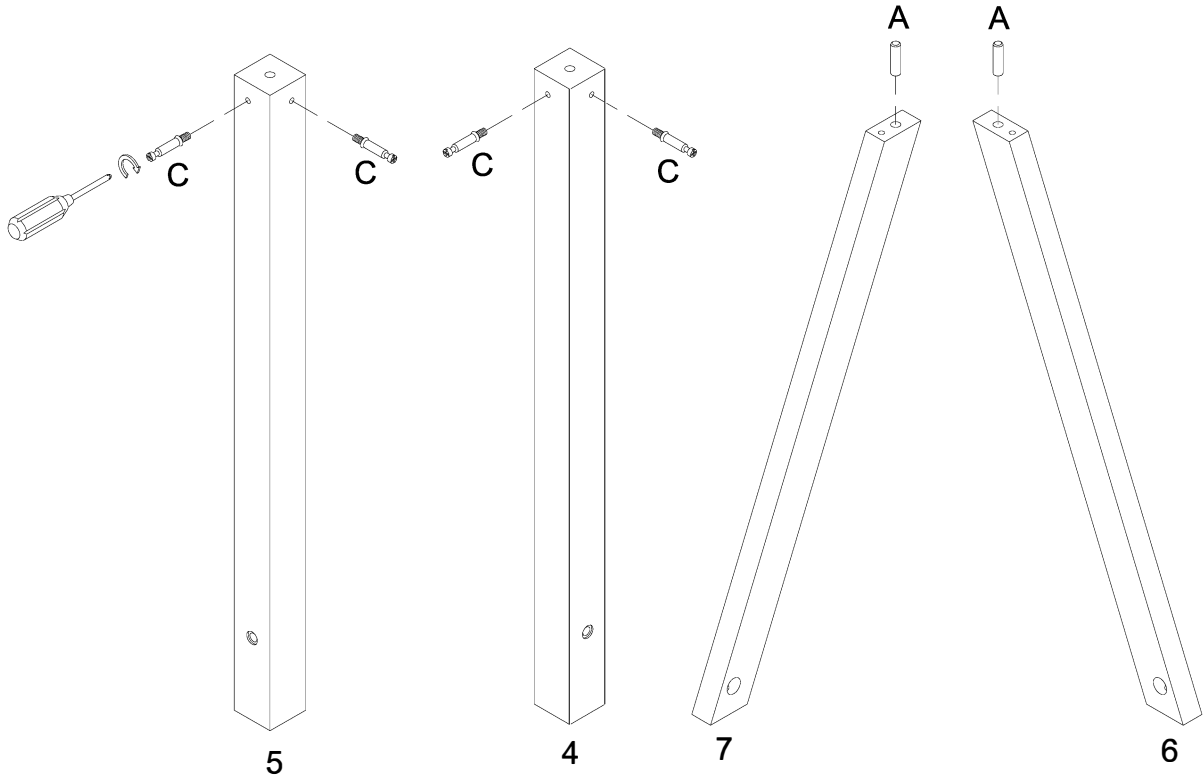


Philips head screwdriver required for assembly  
(not included)

*The hardware quantities listed above are required for proper assembly.  
Some extra hardware may also have been included.*

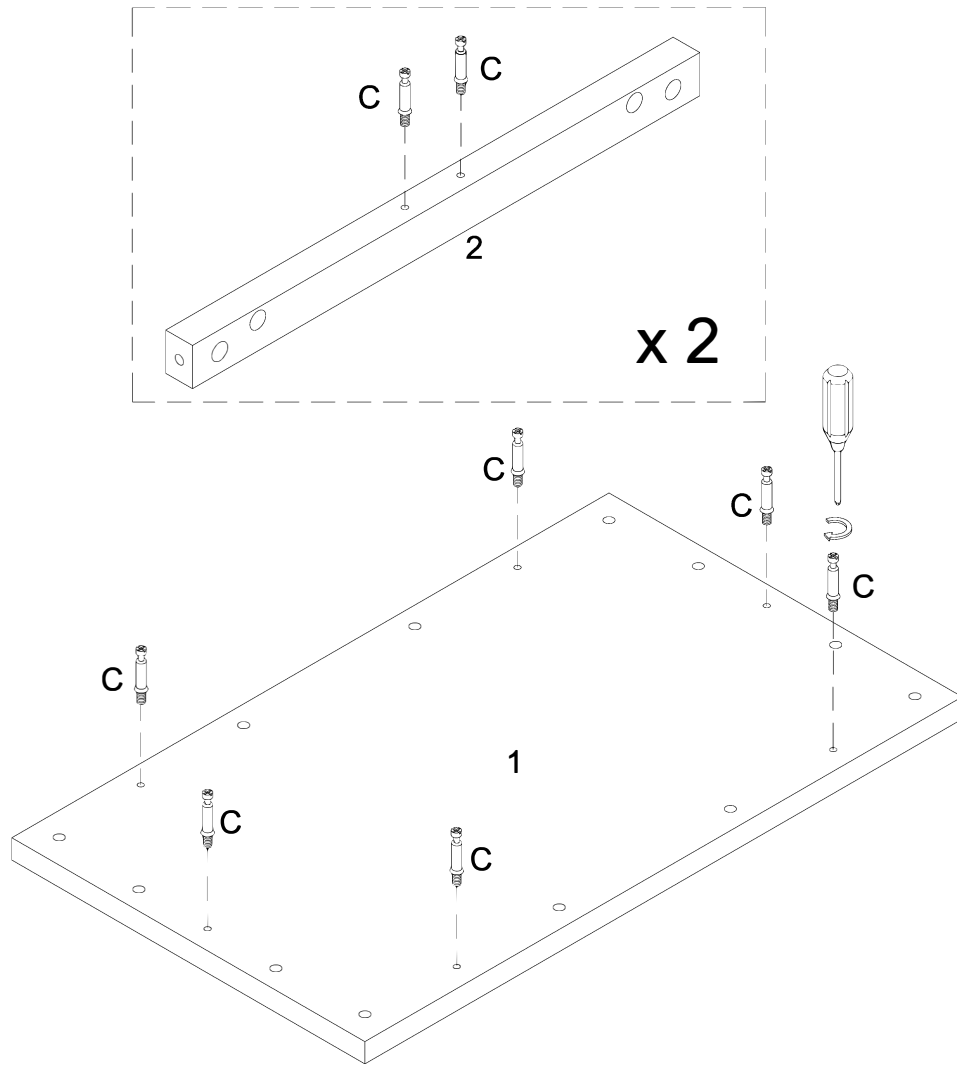
# Step 1

x 2



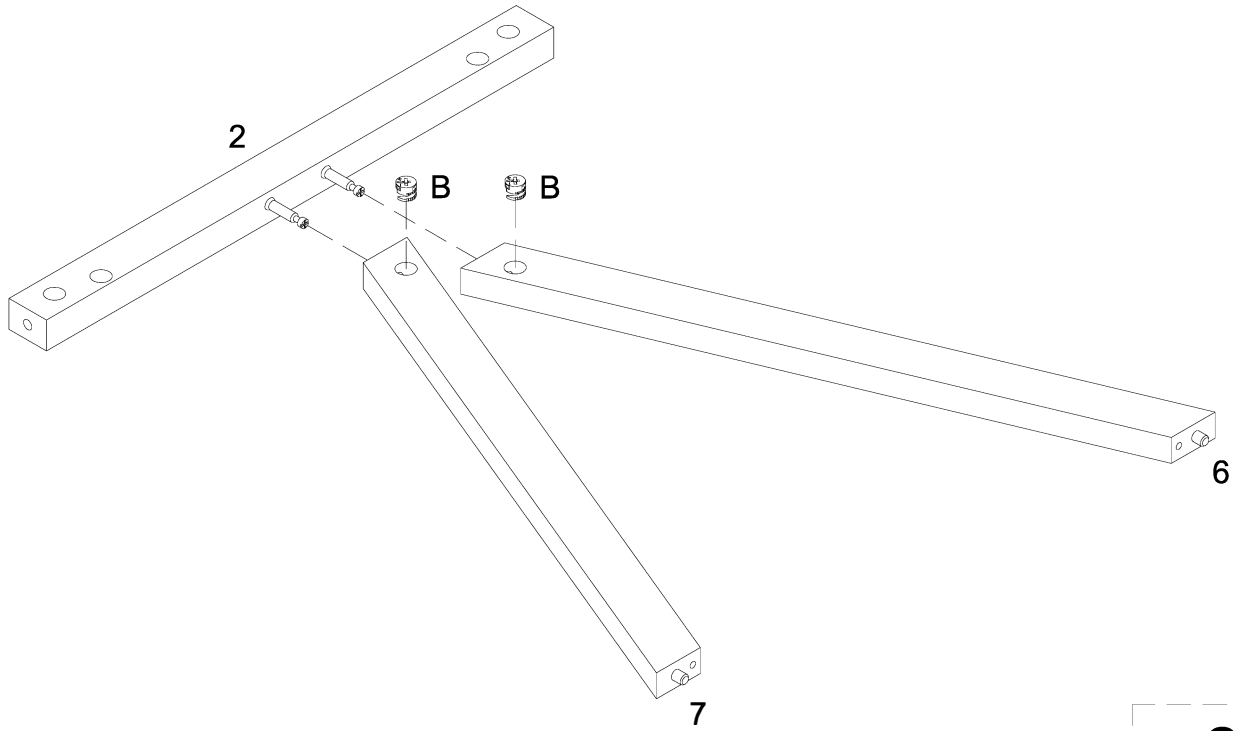
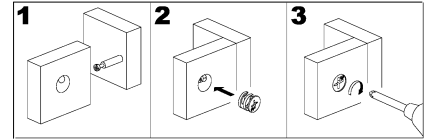
Insert wooden dowel (A) into parts (6,7), secure cam bolt (C) into parts (4,5) as per diagram.

## Step 2



Secure cam bolt (C) into parts (1,2) with Philips head screwdriver as per diagram.

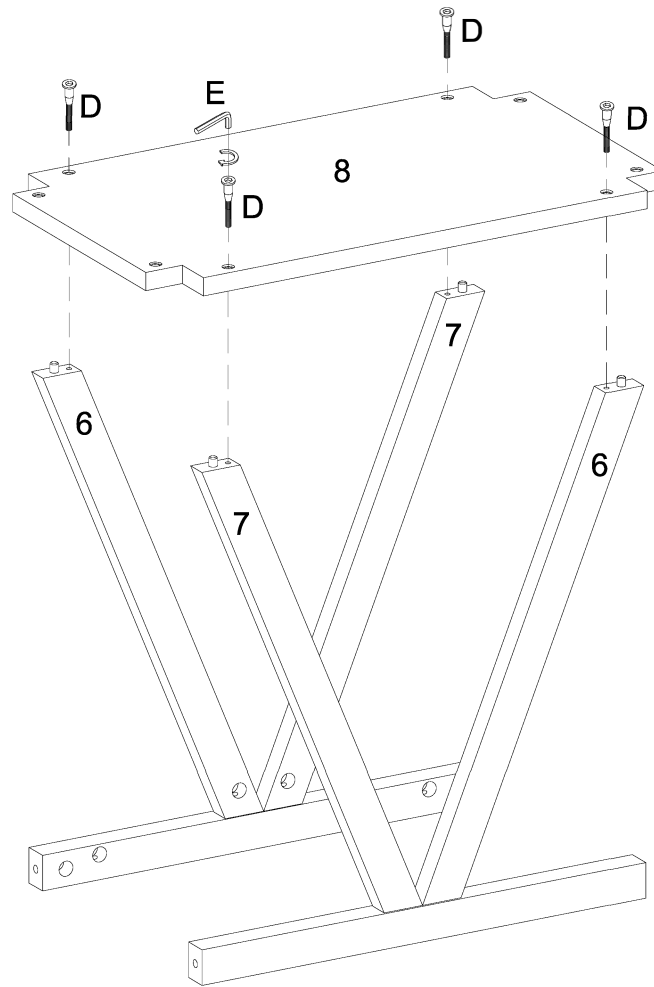
# Step 3



x 2

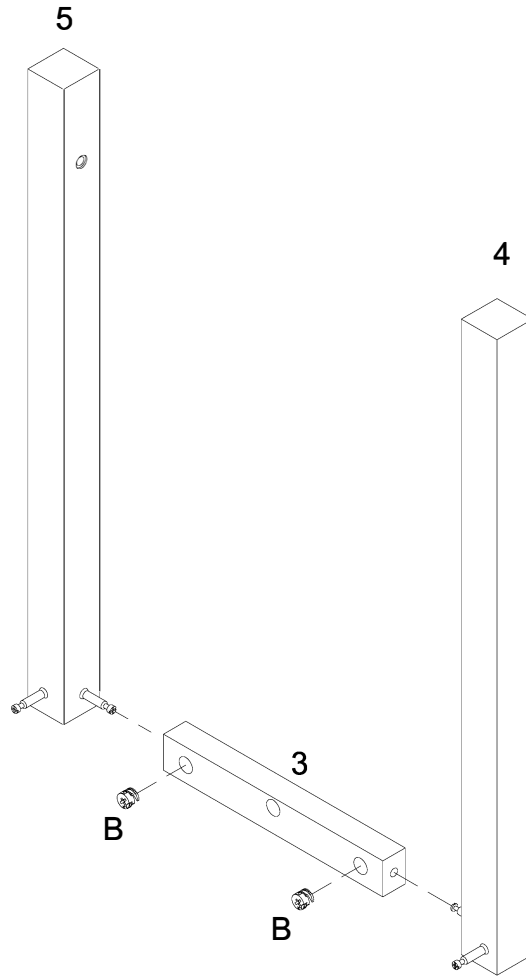
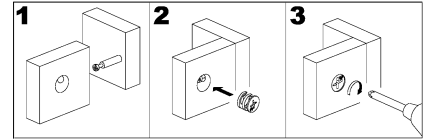
Using cam lock(B) secure parts (6,7) to part (2) with Philips head screwdriver as per diagram.

# Step 4



Using screw (D) attach part (8) into parts (6,7) with hex key (E) as per diagram.

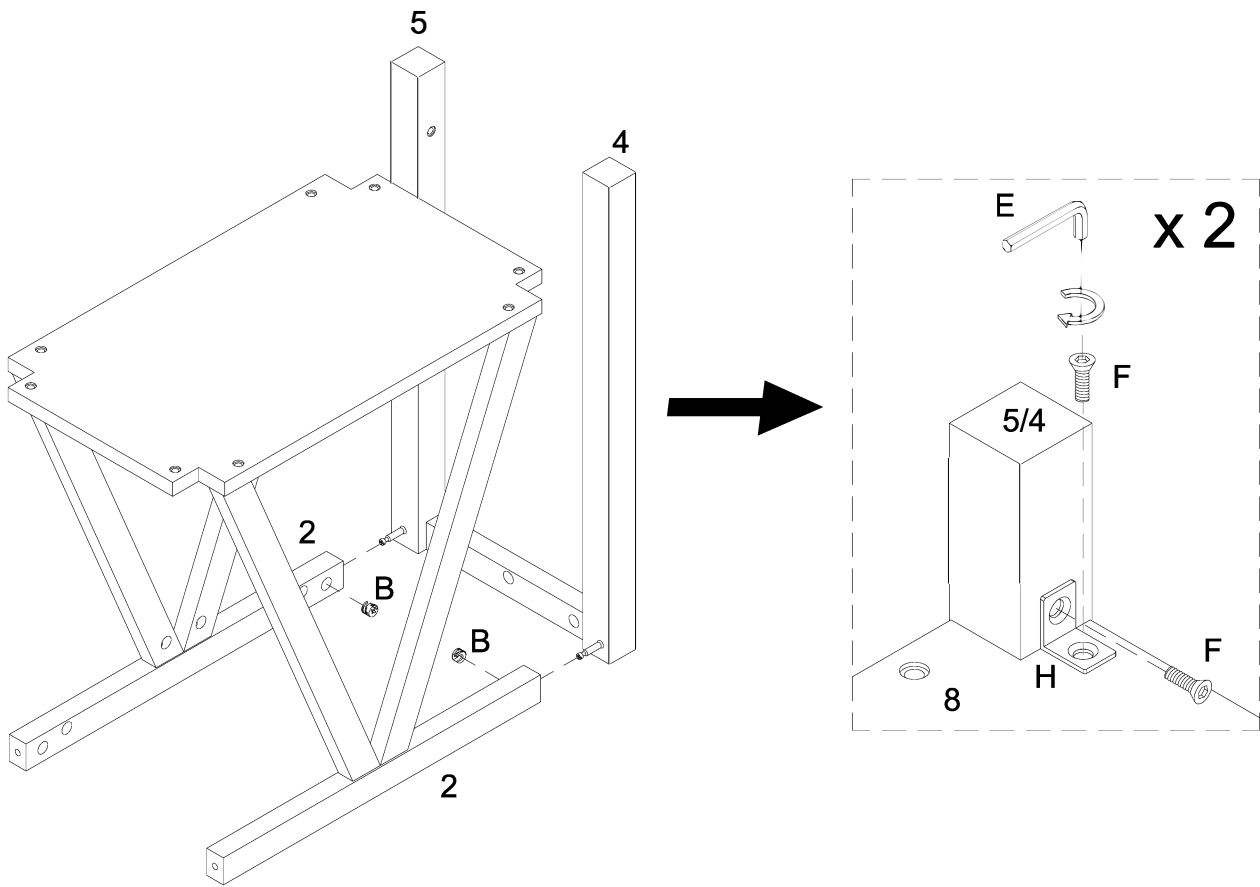
# Step 5



x 2

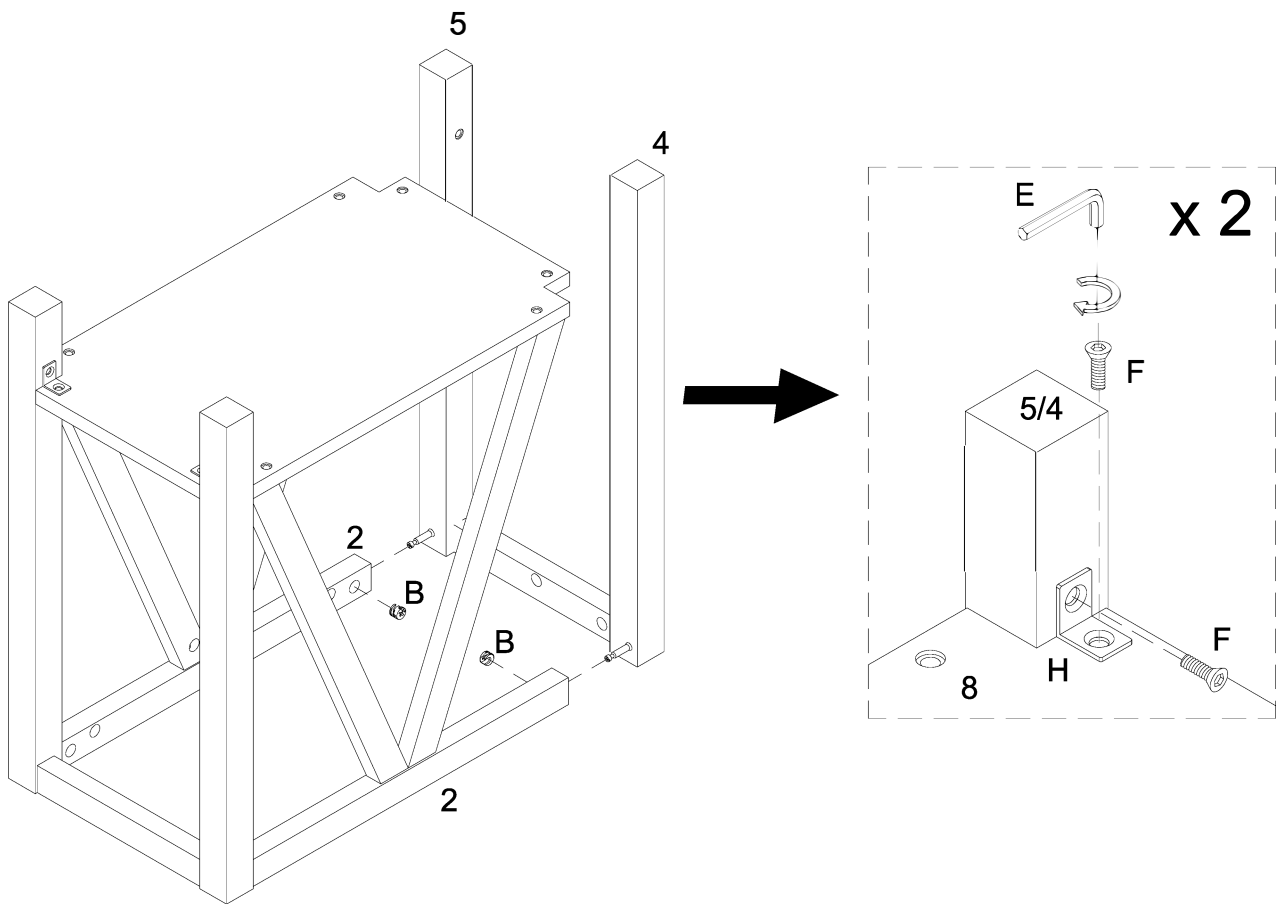
Using cam lock(B) secure parts (4,5) to part (3) with Philips head screwdriver as per diagram.

# Step 6



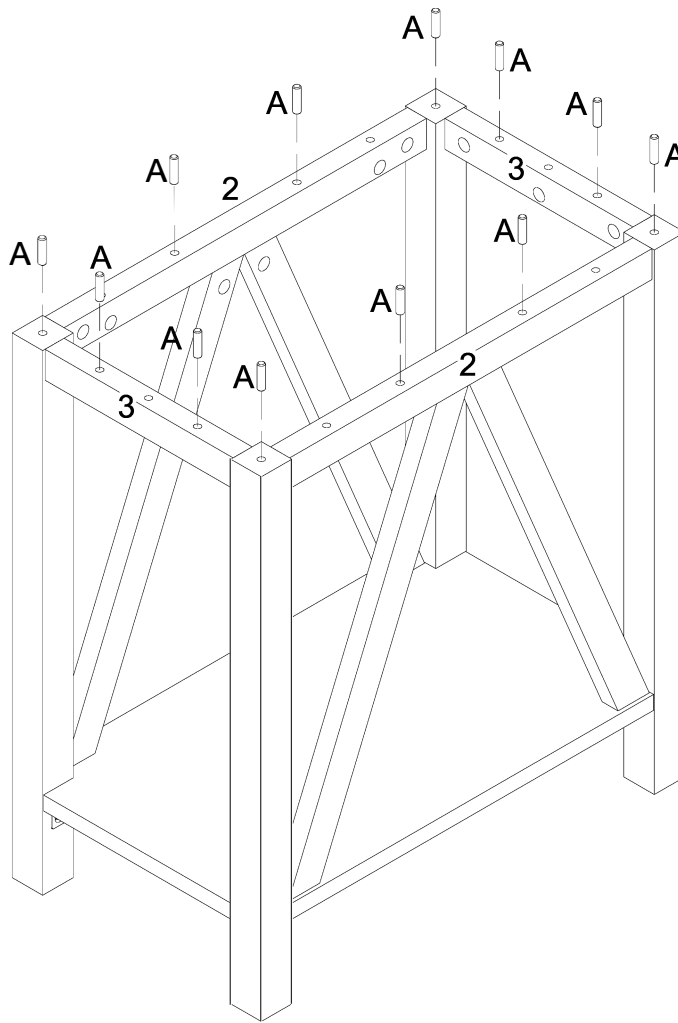
Using cam lock(B) secure parts (4,5) to part (2) with Philips head screwdriver,then using bolt (F) attach connecting iron sheet (H) with Hex key (E) as per diagram.

# Step 7



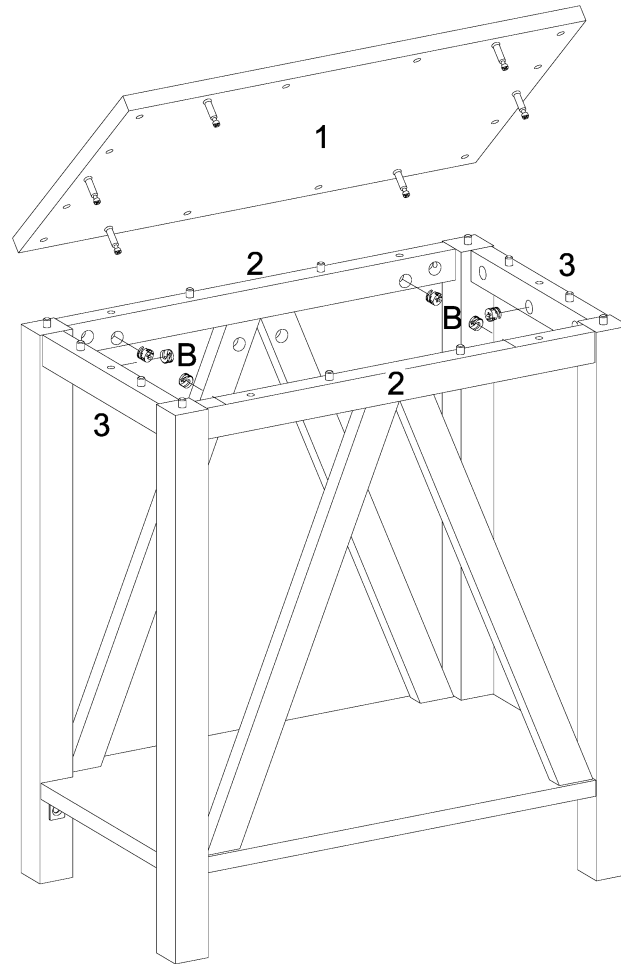
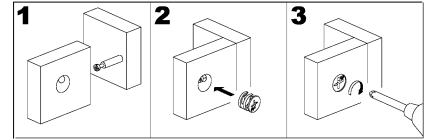
Repeat last step as per diagram.

# Step 8



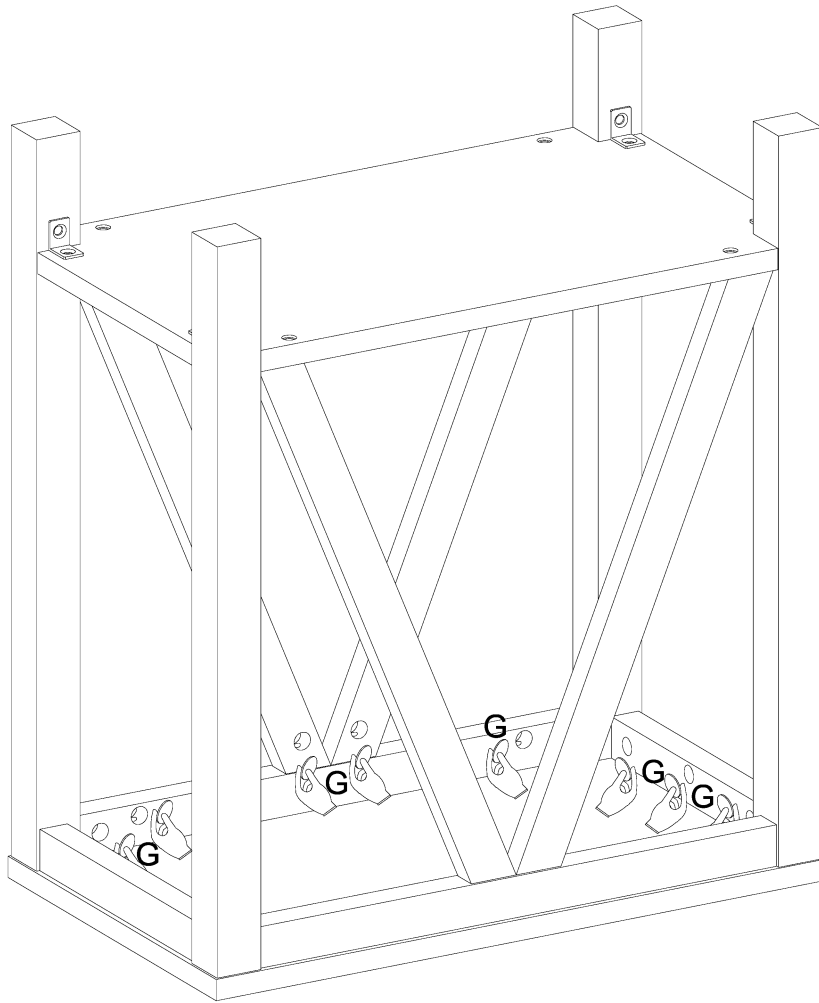
Insert wooden dowel (A) as per diagram.

# Step 9



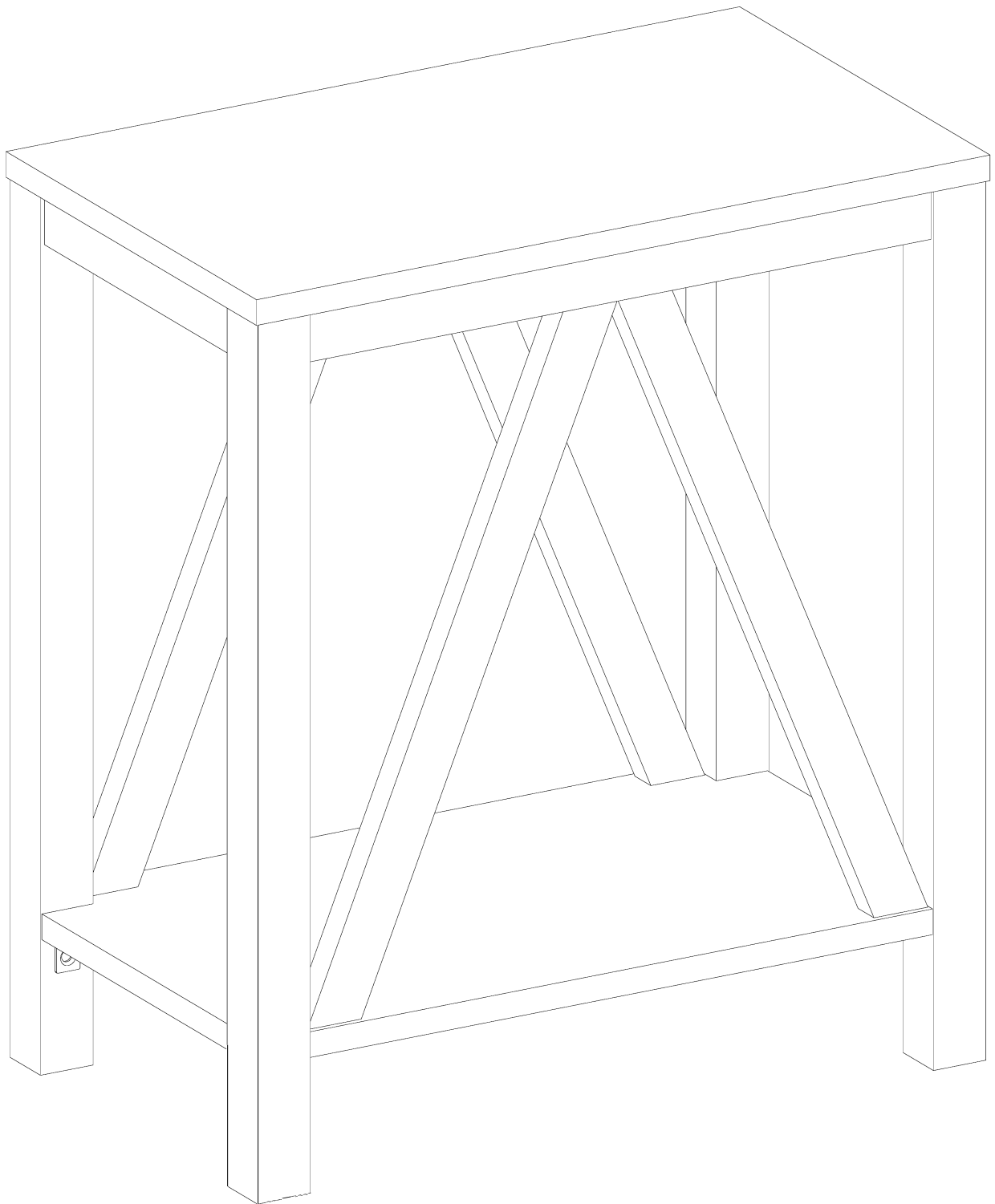
Using cam lock (B) secure part (1) into parts (2,3) with Philips head screwdriver as per diagram.

# Step 10



Place sticker (G) cover the holes as per diagram .

# Step 11



**Final Assembly**