

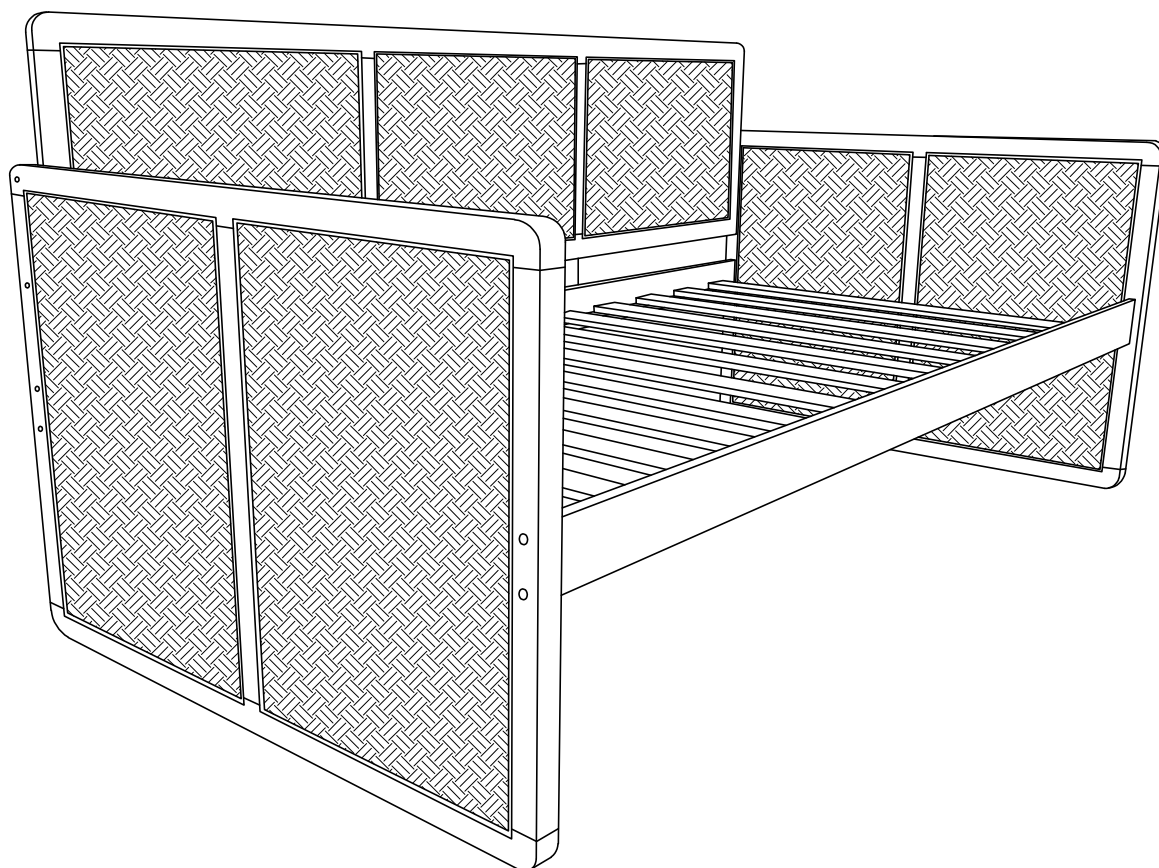


DO NOT RETURN TO RETAILER
IF YOU HAVE ANY
QUESTIONS OR CONCERNS

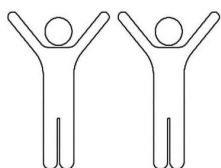


Abaco Daybed

Assembly Instructions



Required:



Tools Needed:



Allen Key provided

Please cover floor with corrugated cardboard / paper / carpet
to avoid scratches / damages to floor

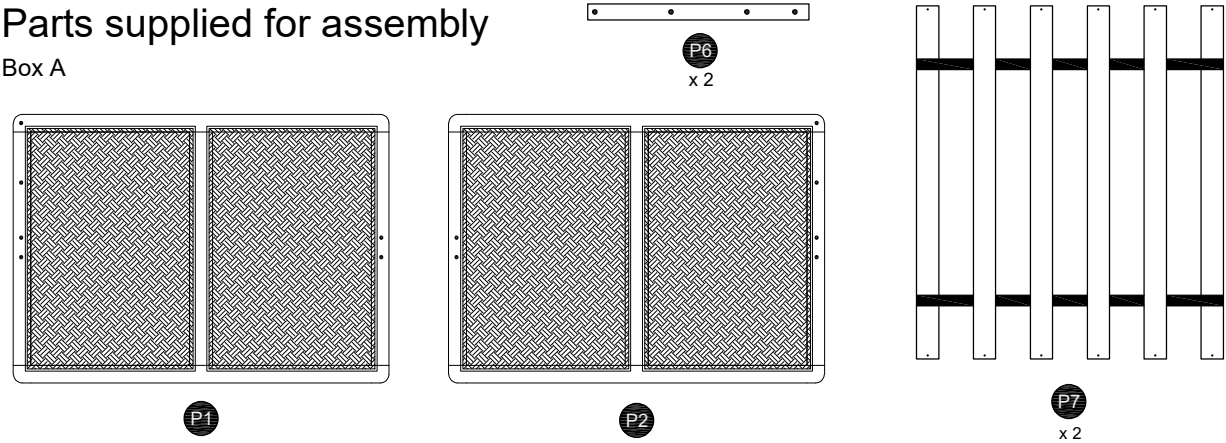
Assembly Checklist

Please make sure that you have all of the below items before you start. If any are missing, please contact us for a replacement.



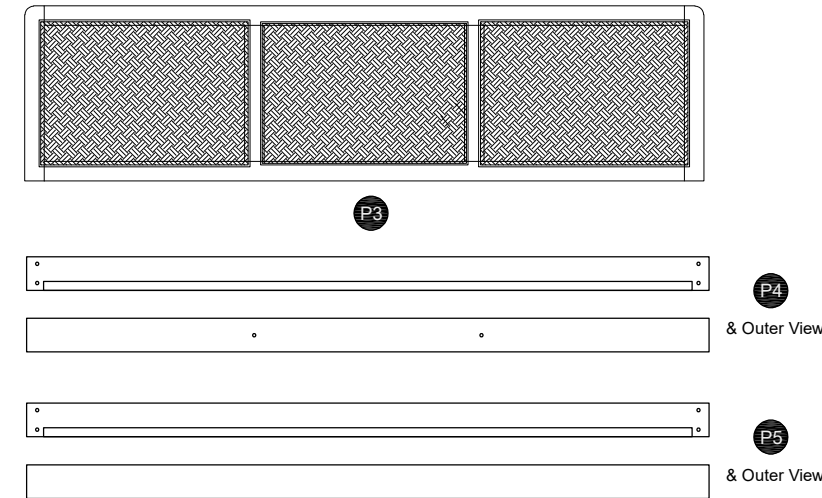
Parts supplied for assembly

Box A

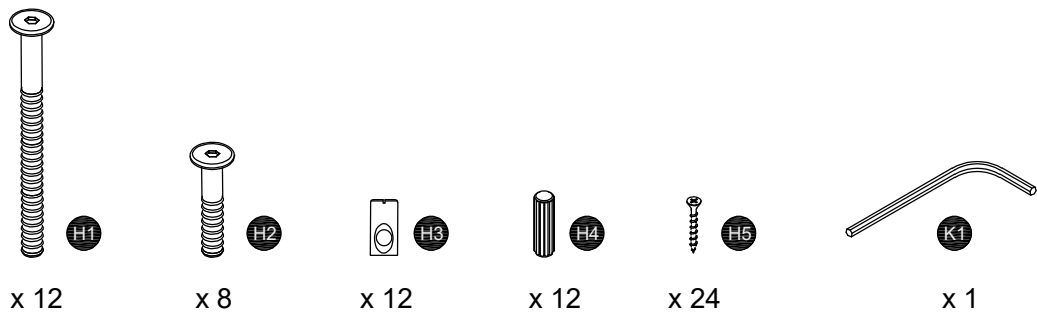


Parts supplied for assembly

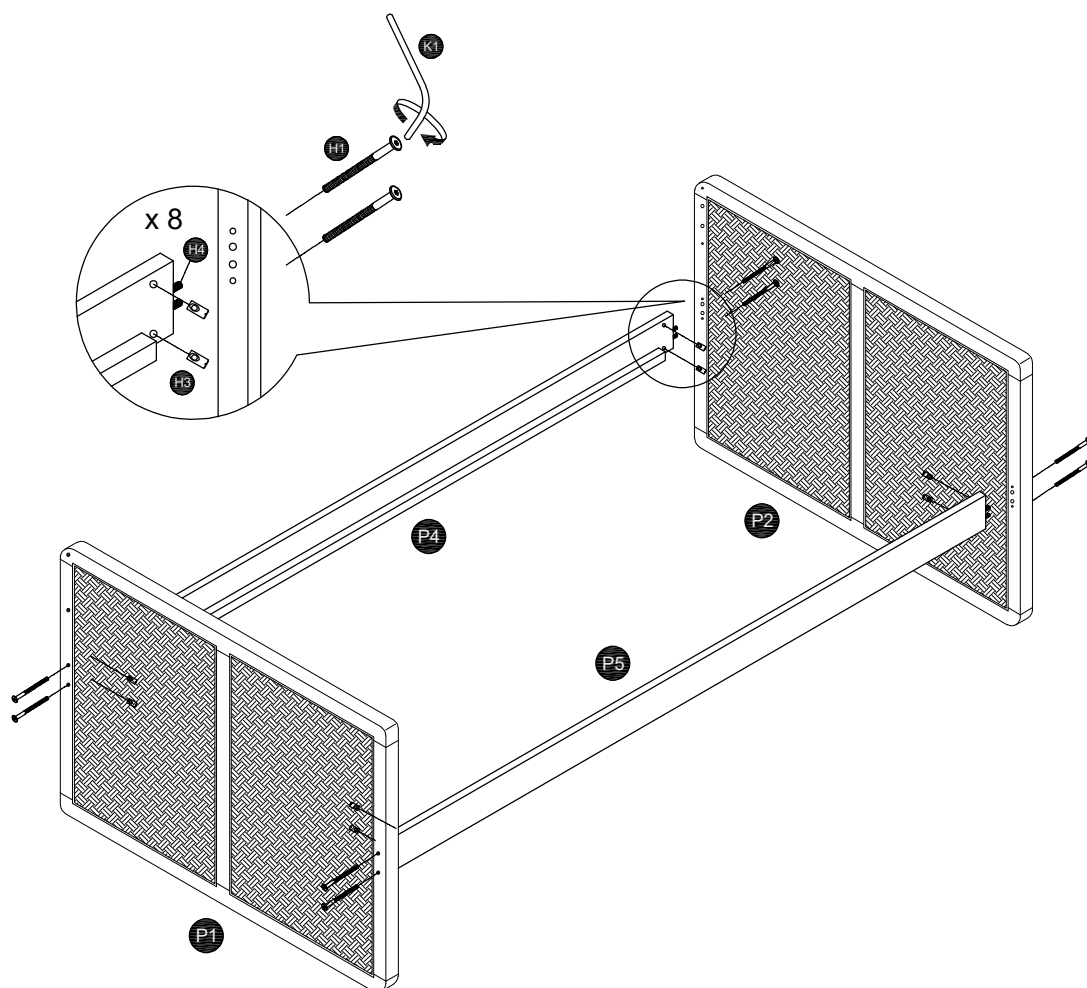
Box B



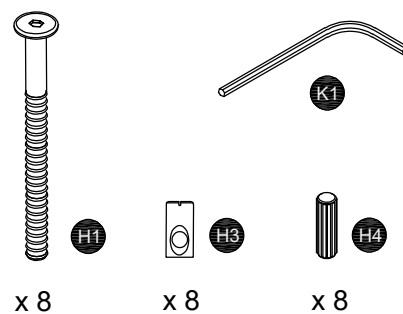
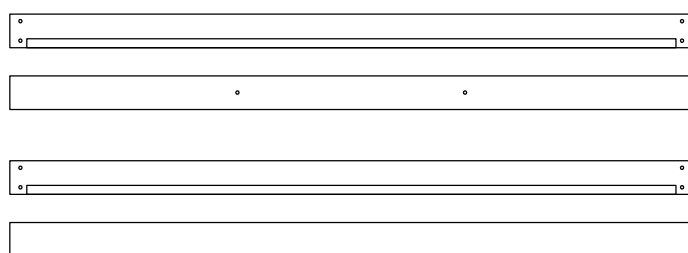
Hardware supplied for assembly



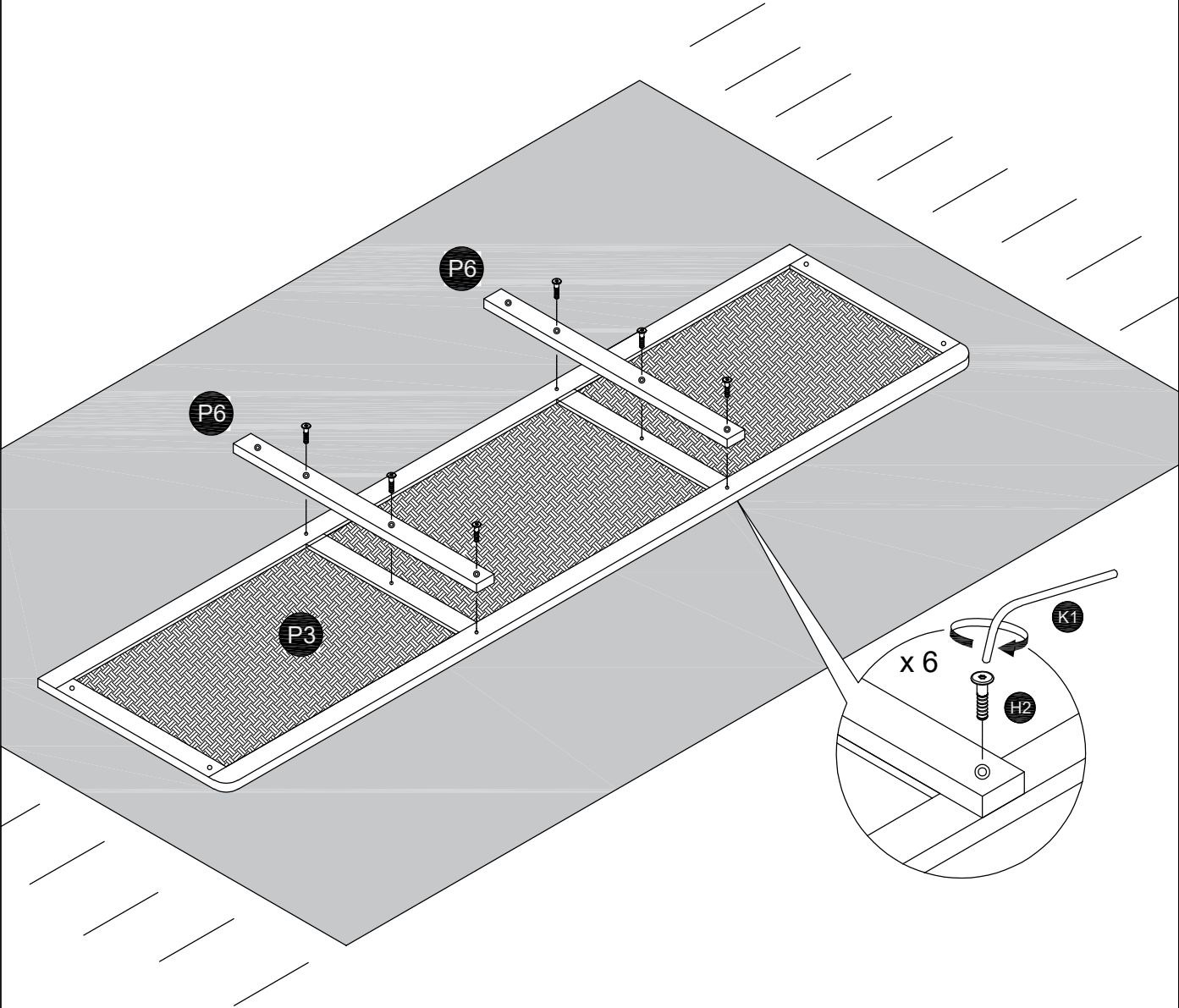
Step 1: Attach P4 and P5 to both arms (P1 & P2)



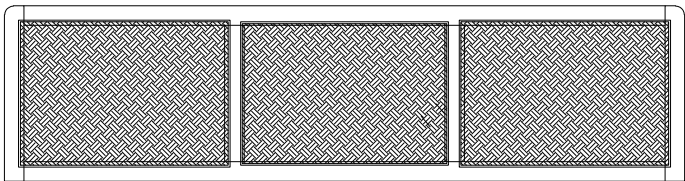
IMPORTANT! Loosely attach H1 bolts at this step.



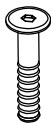
Step 2: Attach P6 to P3 with hardware as shown



Tighten all bolts at this point.



x 2



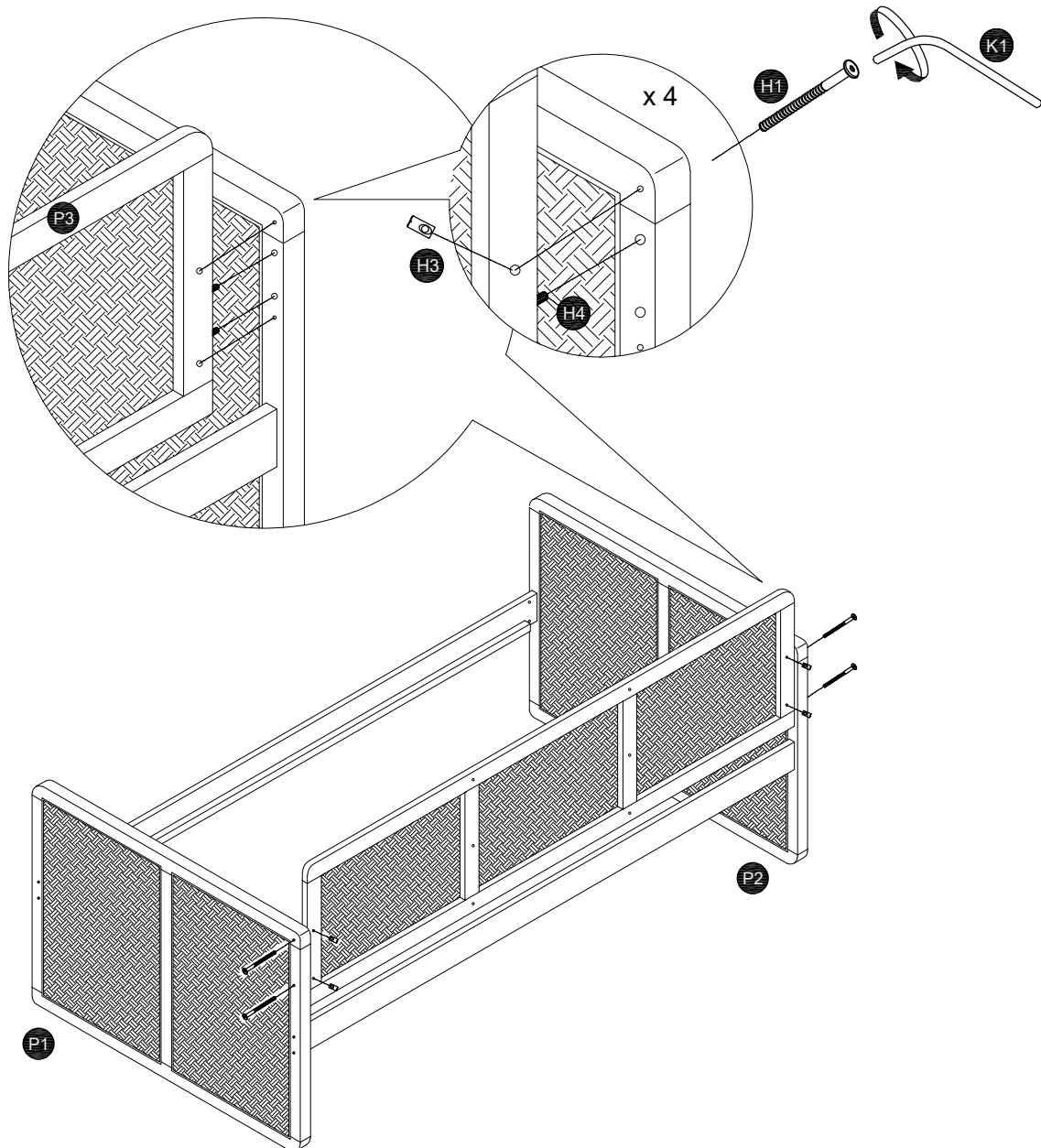
H2

x 6

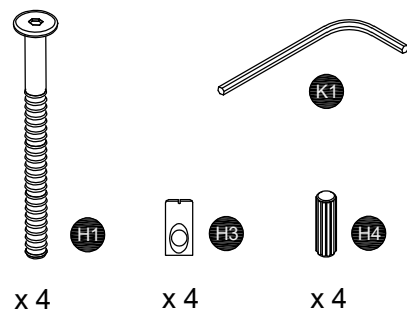
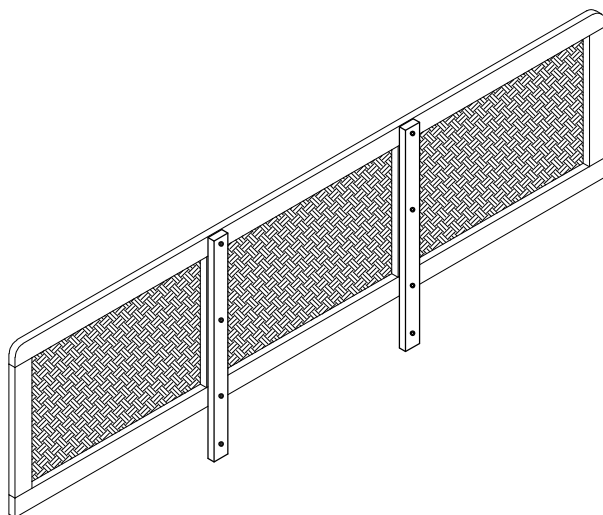


K1

Step 3: Attach back panel P3 to Leg P1 & P2

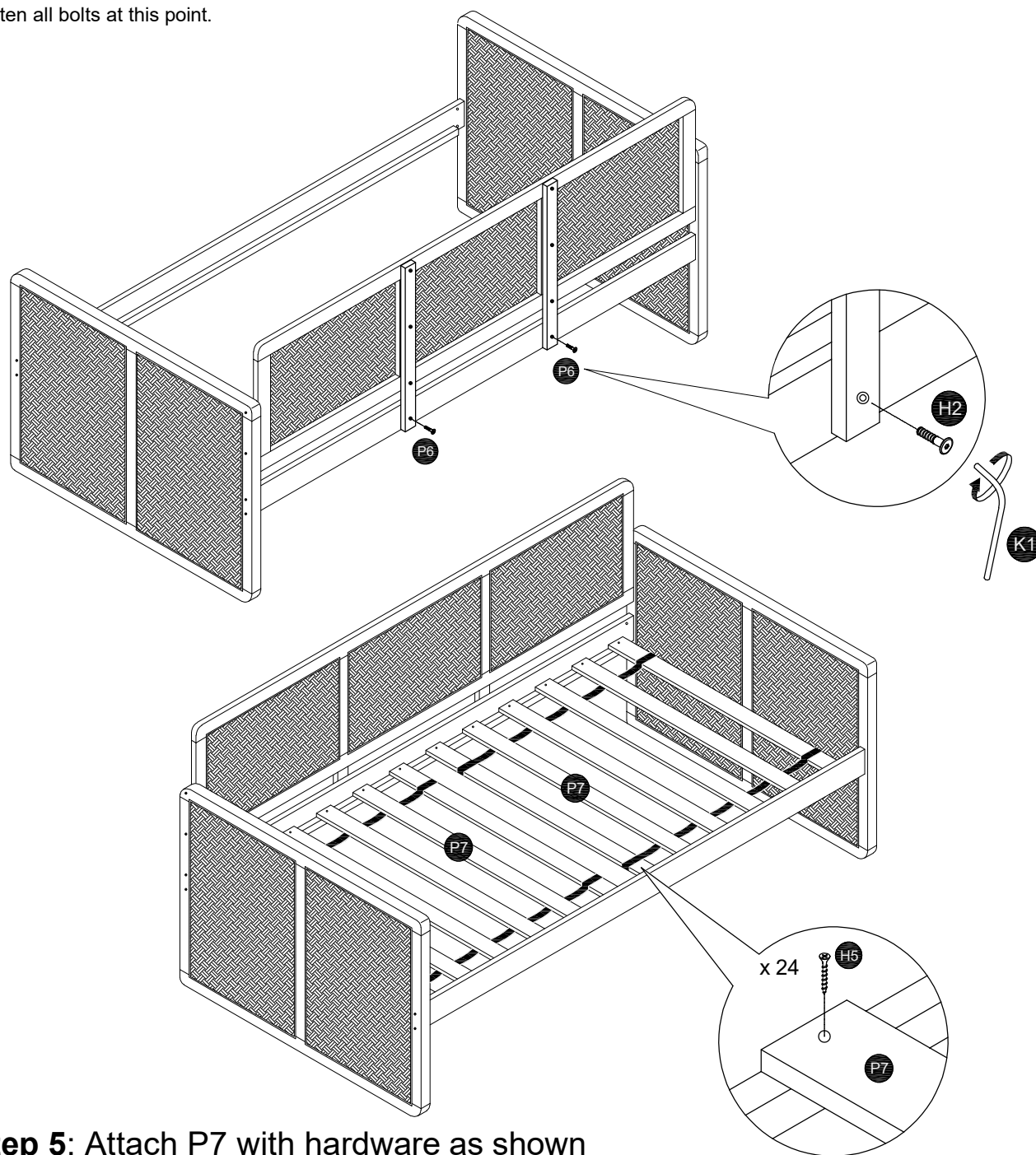


Pre-drilled holes should face back.



Step 4: Secure P6 with hardware as shown

Tighten all bolts at this point.



Step 5: Attach P7 with hardware as shown

Tighten all bolts at this point.

