



WONDER WOMAN™
WALL LIGHT

LARGE (PRO VERSION)

Installation Guide

More lighting stuff on:

dcilluminated.com

Contact: **sales@dcilluminated.com**

Made by **Brandlite®**

Unit 3603, Level 36, Tower 1, Enterprise Square Five,
38 Wang Chiu Road, Kowloon Bay, Hong Kong

© THE DESIGN OF THIS PRODUCT IS COPYRIGHT PROTECTED.

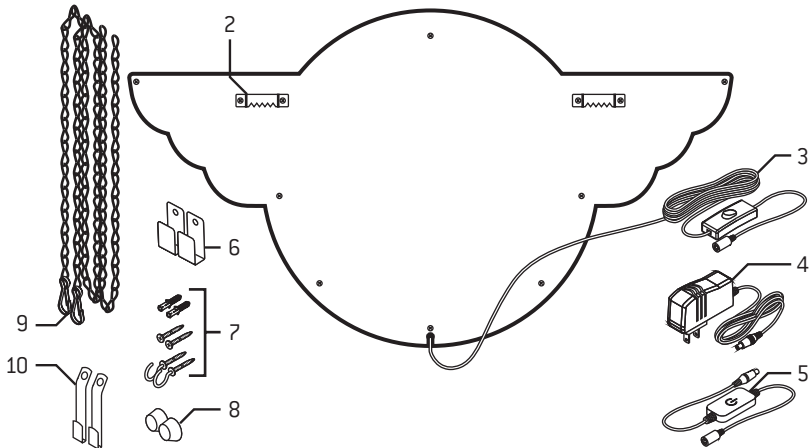
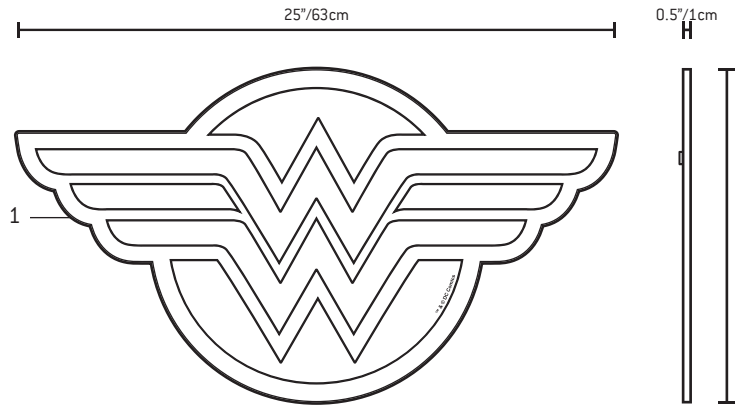


WONDER WOMAN and all related characters and elements
© & ™ DC Comics. (s21)

8+

SKU: BL01DC0301

What's In The Box?

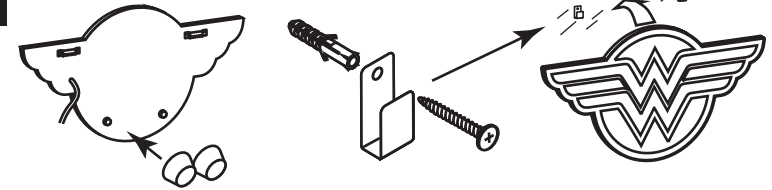


SKU: BL01DC0301 LARGE

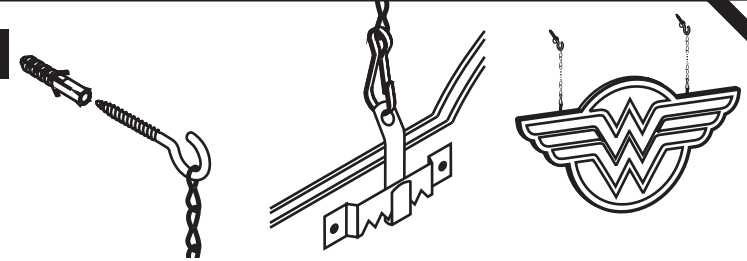
WALL MOUNTED OR SUSPENDED FROM CEILING



WALL MOUNTING



CEILING SUSPENSION



Safety Notes / Handling

Place the light in a safe location so that it does not present a tripping hazard. For wall mounting, use a level tool to ensure the light is mounted horizontally.

The light is maintenance free. The light source of this luminaire is not replaceable. The expected lifetime of the LED light is over 50,000 hours or 22+ years based on average use of 6 hours per day.

When cleaning, gently wipe with soft, damp cloth. Do not use abrasive cloth or brush. Never use solvents to clean the product.

Warranty

The product is warranted for parts working for one year from purchase. If problems arise, please contact your retailer for repair or replacement.

Contents

The numbering refers to drawing on other side.

- 1 LED Wall Light with Halo & Glow Effect
- 2 Wall Hanging Bracket (Sawtooth Style)
- 3 Cable with On-Off Switch & Connector
- 4 Power Supply 100-240V 12V DC (1-2A)
- 5 Dimmer for Light Adjustment (Optional)
- 6 Safety Wall Hooks (Optional)
- 7 Fasteners
- 8 Wall Cushion (Rubber Standoff)
- 9 Chains for Ceiling Suspension
- 10 Chain Clips

Specifications

Body: Acrylic (PMMA)
 Graphic: Multi-Layer Screen Printing
 Lighting: High Durability LED
 Power Supply: 110-240V AC 50-60Hz
 Intended Use: Lighting for Indoor Use
 Made in China

