

ASSEMBLY INSTRUCTIONS

WICKER CHAIR



Table of Contents:

| | |
|---------------------------|----------|
| General Information..... | Page 2 |
| Safety Information..... | Page 2 |
| Preparation..... | Page 2 |
| Parts List..... | Page 3 |
| Assembly..... | Page 4-5 |
| Warranty Information..... | Page 6 |

****IMPORTANT NOTICE****

Do **NOT** return to place of purchase.

SAVE THESE INSTRUCTIONS FOR FUTURE REFERENCE.

WICKER CHAIR

GENERAL INFORMATION:

Your new chair is made from the finest materials available. It should provide many years of enjoyment with minimal care.

Keep your chair clean. For best results, clean the chair with a soft, damp cloth. If you use furniture covers, always make sure the chair is clean and completely dry before covering as mold may form in dark, wet places. Remove cushions prior to covering and store them in a dry, temperature controlled place. Check the bolts on your chair regularly to make sure they are tight.

The weight limit for this chair is 220 lbs.

SAFETY INFORMATION:

WARNING

DO NOT stand or allow children to stand on the assembled product.

DO NOT tighten bolts completely until instructed to do so. After final alignment, make sure all bolts are securely fastened.

NEVER use a power tool to assemble or tighten your furniture. Perform periodic checks to make sure the hardware is secure and tighten if needed.

CAUTION

READ all instructions before beginning assembly. Failure to do so may result in faulty assembly and potential injury. Assemble the item on a soft, non-abrasive surface such as a carpet or cardboard to avoid damaging the item.

PREPARATION

Before beginning assembly, make sure all parts are present. Compare parts received with the "Parts List." If any part is missing or damaged, do NOT attempt to assemble the product.

WICKER CHAIR

PARTS LIST

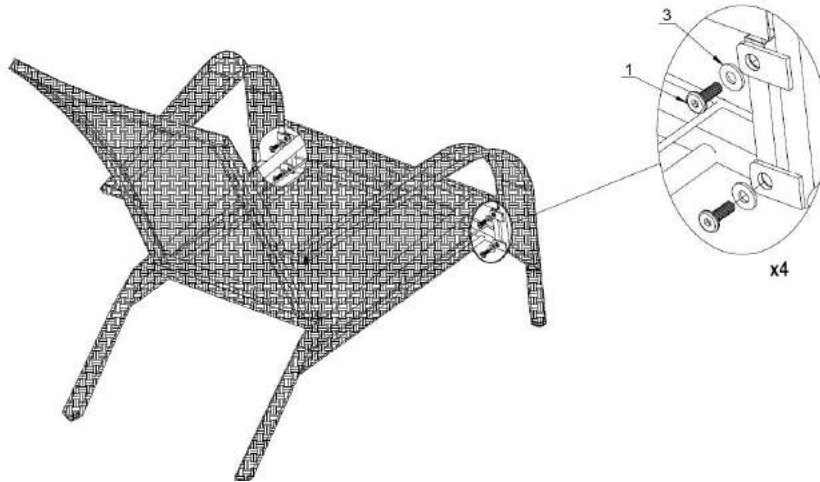
| Part Description | Quantity |
|------------------|----------|
| A – Seat Back | 1 |
| B – Arms | 2 |
| C – Seat | 1 |

HARDWARE LIST

| | |
|------------------|---|
| 1 - M6x20 Bolts | 6 |
| 2 - M6x40 Bolts | 3 |
| 3 - M6 Washers | 9 |
| 4 - Allen Wrench | 1 |

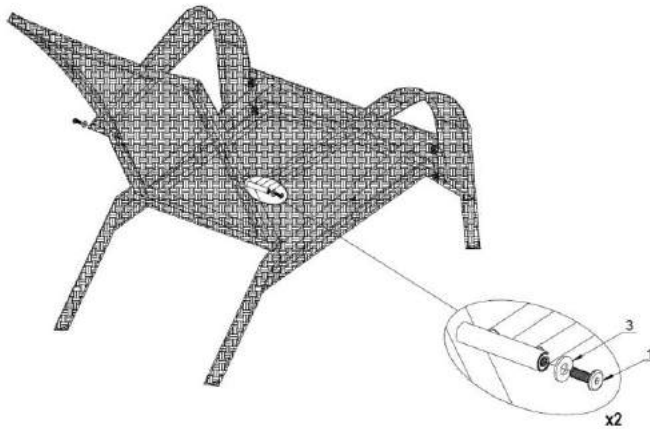
WICKER CHAIR

ASSEMBLY



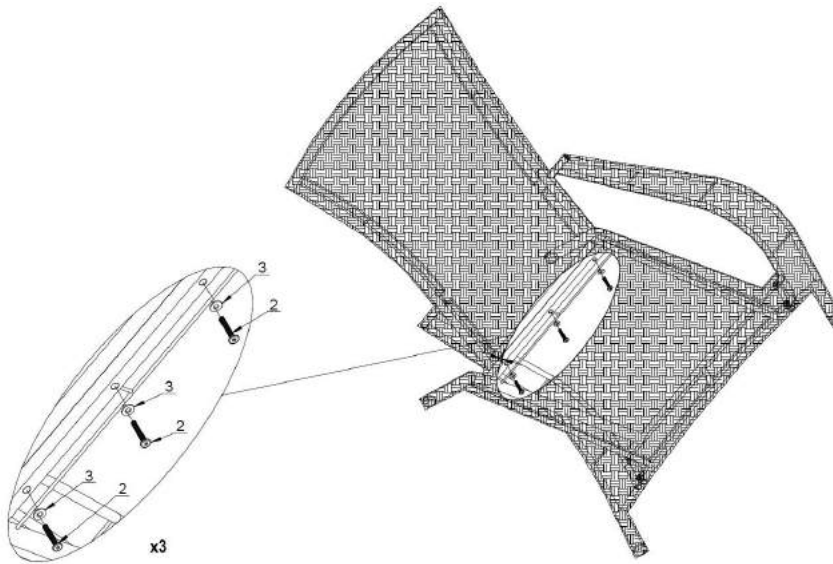
Before you begin, place all parts on a clean, soft, level surface.

Step 1: Attach the Arms to the Seat with 4 - pcs. M6x20 Bolts and M6 Washers with the Allen Wrench.



Step 2: Attach the Arms to the Seat Back with 2 - pcs. M6x20 Bolts and M6 Washers with the Allen Wrench.

WICKER CHAIR



Step 3: Attach the Seat to the Seat Back with 3 – M6x40 Bolt and M6 washers with the Allen Wrench.

Tighten all hardware. Your chair is now ready for use!

1 YEAR LIMITED WARRANTY – Customers in the Continental US

All components are warranted for a period of 1 year after date of purchase by the original owner against defects in materials and workmanship under normal use. This warranty does NOT cover normal wear and weathering, assembly and/or maintenance OR use in a commercial application if model is not designated as a commercial model. Products under warranty will be repaired and/or replaced at no charge to the customer. Any returns sent back to us must be sent via prepaid freight and in the original retail packaging.

This warranty is extended only to the original purchaser. Proof of purchase will be required before warranty service is rendered. The sales receipt is the only valid proof of purchase. This warranty only covers failures due to defects in materials or workmanship which occur during normal use. Failures and/or damage which result from accident, negligence, misuse, abuse, neglect, mishandling, alteration or modification, failure to maintain, improper assembly or maintenance, service by unauthorized agency or use of unauthorized components or damage that is attributable to acts of God are NOT covered.

This limited warranty gives you specific legal rights and you may also have other rights which vary from jurisdiction to jurisdiction. The provisions of the United Nations Convention on Contracts for the Sales of Goods shall not apply to this limited warranty or the sale of products covered by this limited warranty.

IMPORTANT NOTICE

-Do **NOT** return to place of purchase-
For customer service and warranty issues
contact our Customer Service Center

All rights reserved.