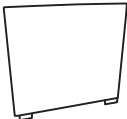
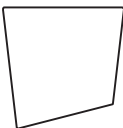
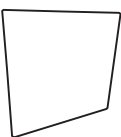

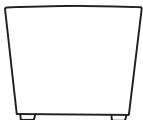
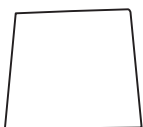
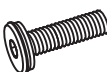




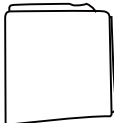



COMPONENT LIST – STORAGE BOX

Item no.	Reference Image	Description	Qty.
H		Back Side	1
M		Left Side	1
R		Right Side	1
F		Bottom Side	1
G		Front Side	1
E2		Top Side	1
M2		M6x35 Bolt	12
M3		M6x20 Bolt	4

COMPONENT LIST – STORAGE BOX

Item no.	Reference Image	Description	Qty.
Q3		Washer	14
Q2		Plastic Washer	3
Z1		Gas Spring	1
Z2		Lining	1
L		Hex Wrench	1

NOTE:

Do NOT tighten any bolts fully first until you have tightened all the bolts.

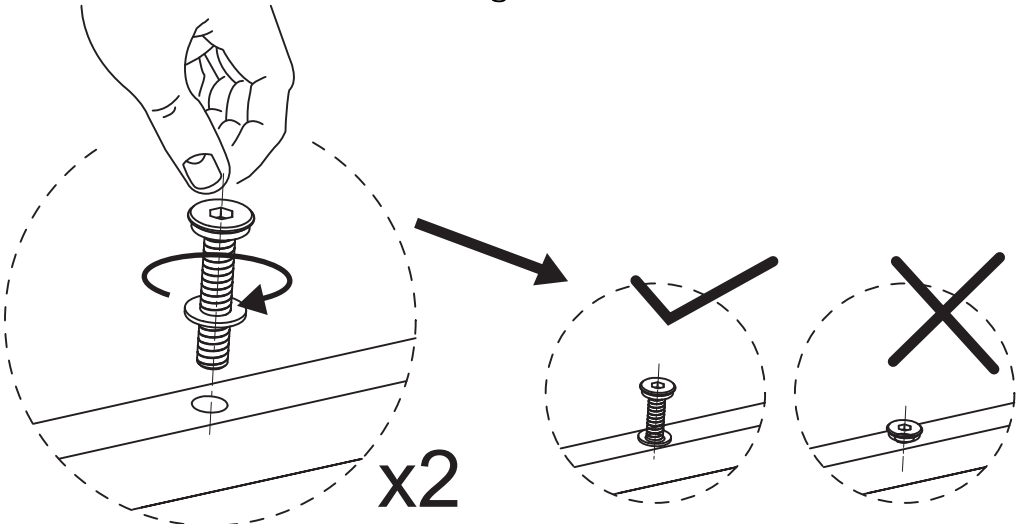
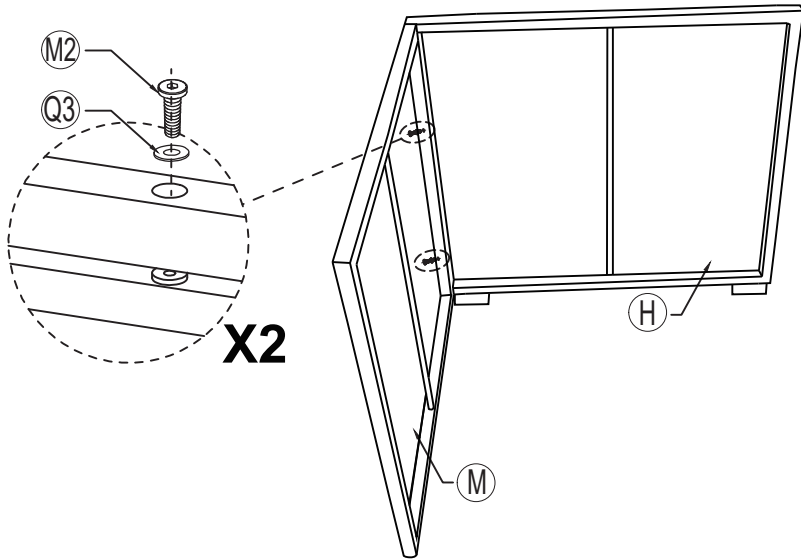
This may cause the frame to warp.

If there is still wobbles or bolt holes cannot be aligned, loosen the bolts and tighten sequentially.

If the Box is not stable it could lead to damage to the product.

1

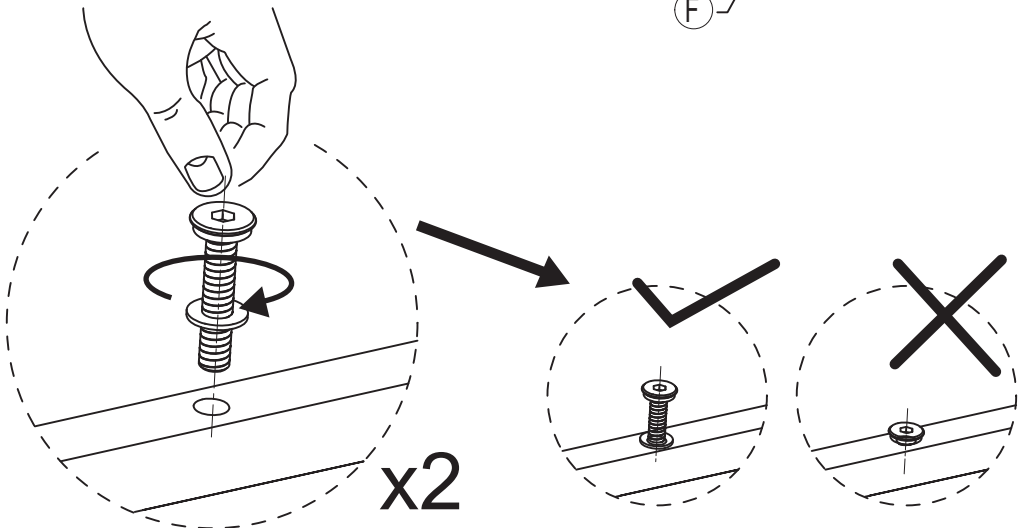
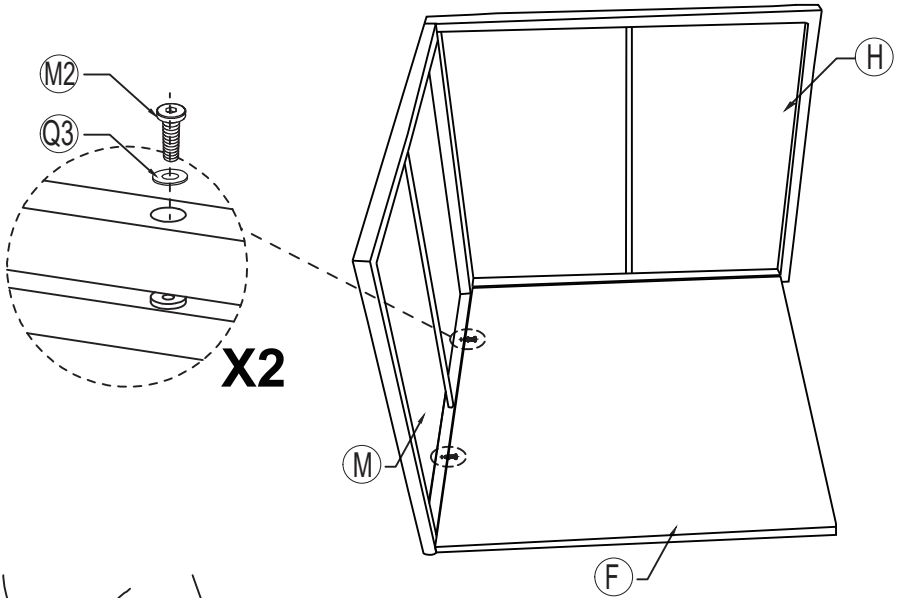
Attach the Back Side (H) to the Left Side (M) with M6X35 bolts (M2) and washers (Q3). Do this in 2 places.



NOTE:DO NOT TIGHTEN THE BOLTS COMPLETELY.

2

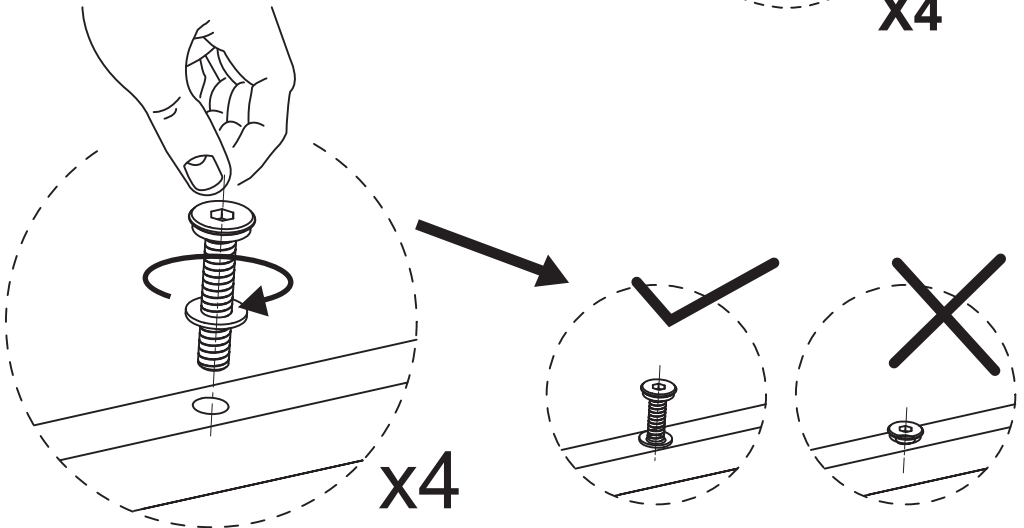
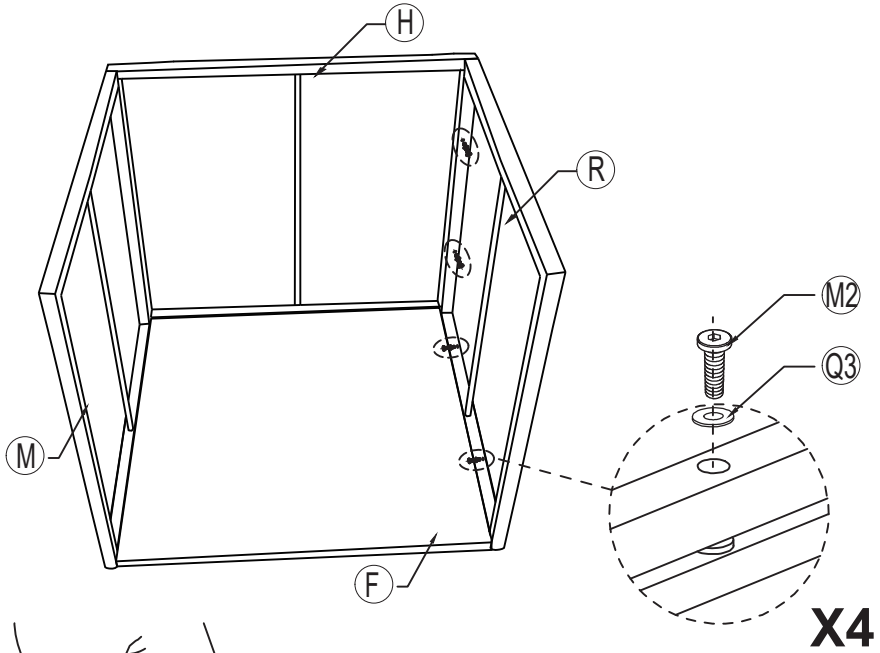
Attach the Bottom Side (F) to the Left Side (M) with M6X35 bolts (M2) and washers (Q3). Do this in 2 places.



NOTE:DO NOT TIGHTEN THE BOLTS COMPLETELY.

3

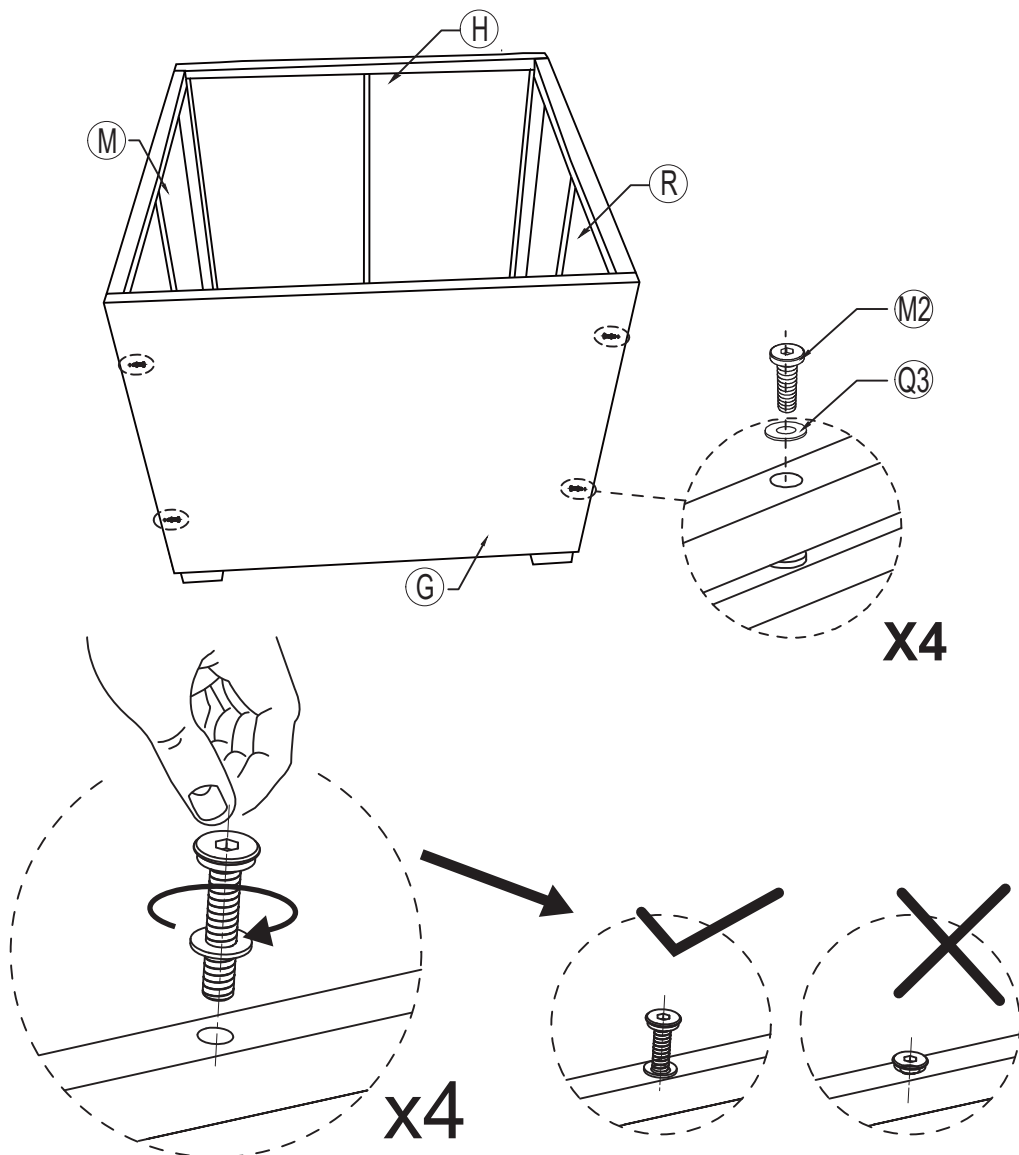
Attach the Right Side (R) to the Back Side (H) & Bottom Side (F) with M6X35 bolts (M2) and washers (Q3). Do this in 4 places.



NOTE:DO NOT TIGHTEN THE BOLTS COMPLETELY.

4

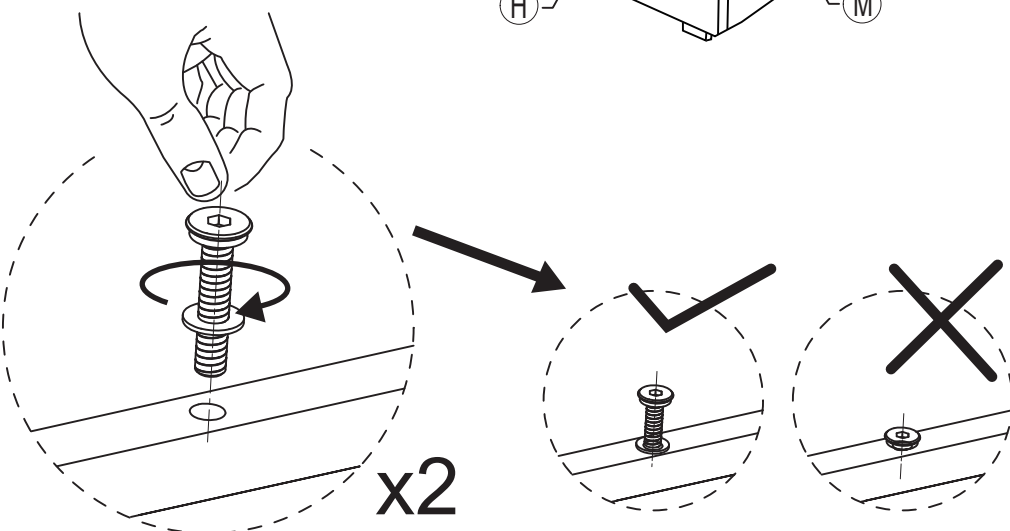
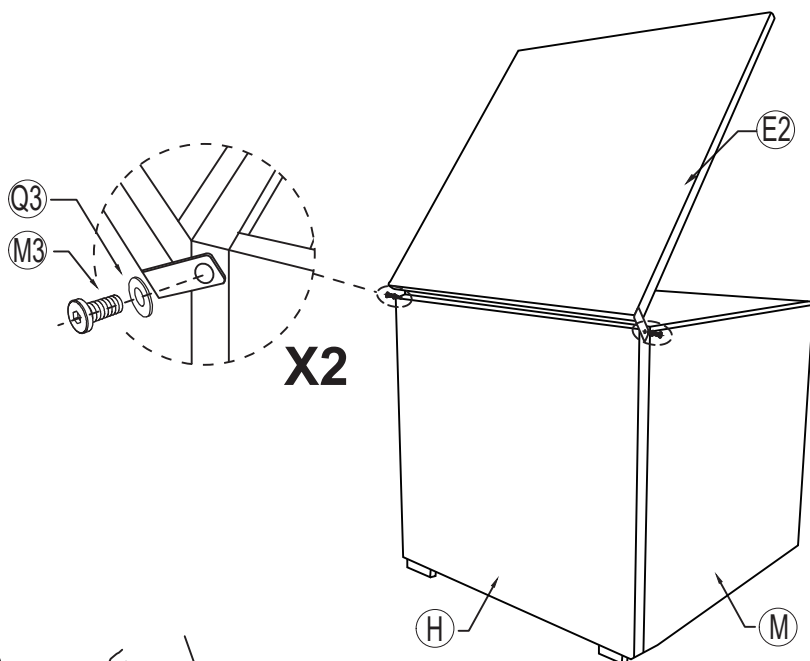
Attach the Front Side (G) to the Left Side (M) & Right Side (R) with M6X35 bolts (M2) and washers (Q3). Do this in 4 places.



NOTE:DO NOT TIGHTEN THE BOLTS COMPLETELY.

5

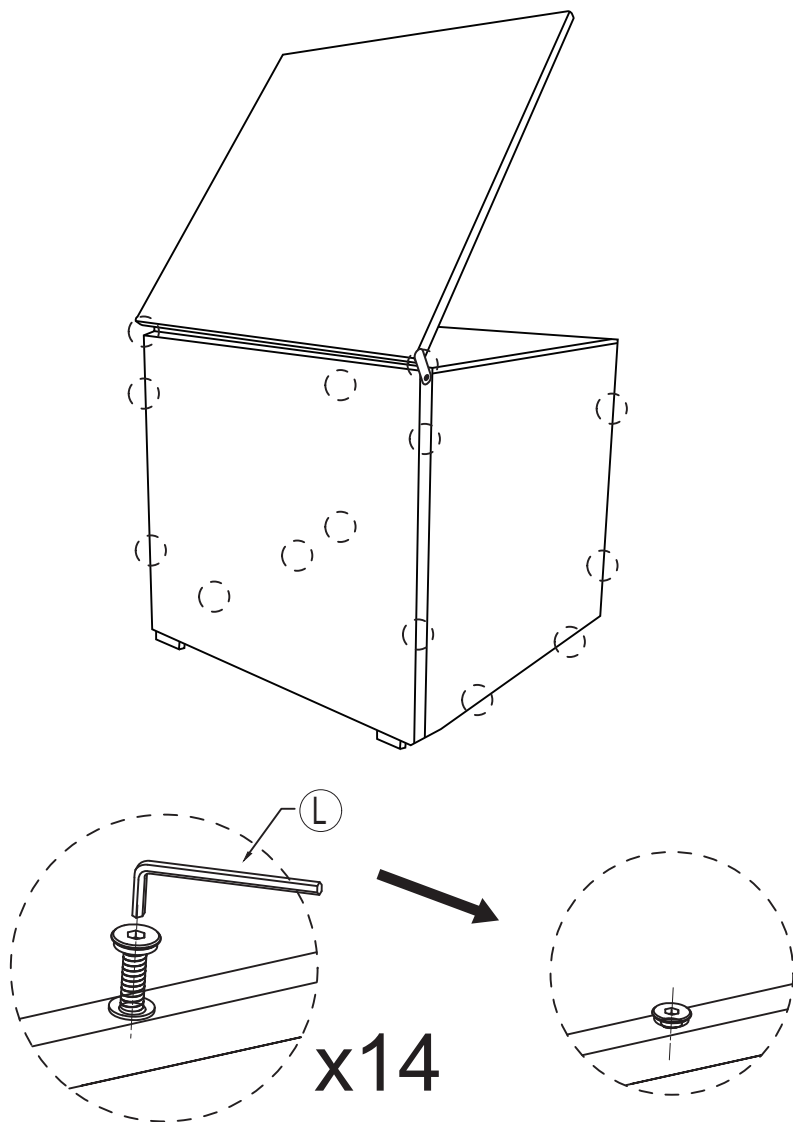
Attach the Top Side (E2) to the Back Side (H) with M6X20 bolts (M3) and washers (Q3). Do this in 2 places.



NOTE:DO NOT TIGHTEN THE BOLTS COMPLETELY.

6

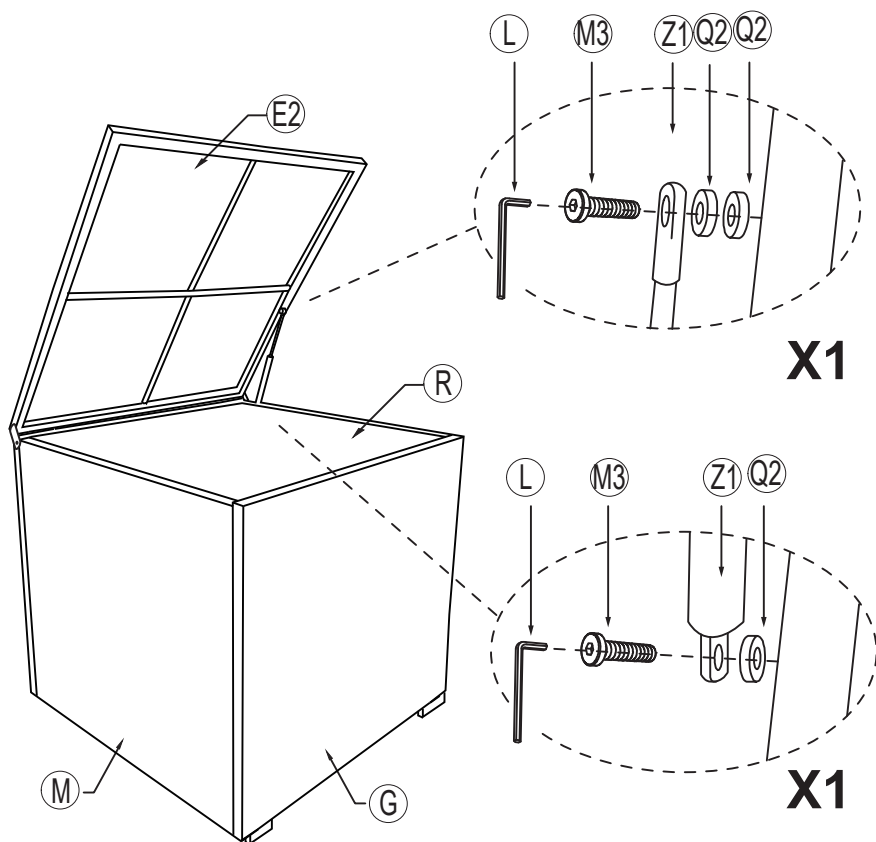
Tighten all 14 Bolts into place with Hex Wrench (L).



NOTE:IF ANY BOLT HOLES CANNOT BE ALIGNED, LOOSEN ALL THE BOLTS AND GO BACK STEP 1 AND RESTART ASSEMBLY.

7

Finish attaching the Top Side (E2) to the Right Side (R) using gas spring (Z1) with M6X20 bolts (M3) and the plastic washer (Q2) on the right bottom of gas spring (Z1) as below picture.



8

Put the lining (Z2) on the Storage box and handle the zipper to open & close.
Your box is ready for use.

