



Ceiling fan with light

FLUSH MOUNT 3 WOOD BLADES

User Manual

Ceiling Fan with Light

Indoor & Outdoor



PLEASE KEEP CHILDREN AND PETS AWAY.

Contains screws, magnets, please keep away children/pets to avoid accidental ingestion.



SAFETY INFORMATION

Part 02

WARNING

To avoid fire, shock and serious personal injury, please read the following instructions carefully. Important Safety Instructions.

- Before installing the fan, disconnect the power by removing fuses or turning off circuit breakers.
- Make sure the installation site you choose allows a minimum of 7.5 feet from the blades to the floor and at least 30 inches from the tip of the blades to any obstruction (see the picture at the next page).
- If you are mounting the fan on a ceiling outlet box, use a metal outlet box. Secure the box directly to the building structure. The outlet box and its support must be able to support the moving weight of the fan (at least 45kgs.). Do not use a plastic outlet box. Attach the mounting bracket by using the hardware supplied with the ceiling outlet box.
- If you are mounting the fan to a joist, make sure it is strong enough to support the moving weight of the fan (at least 45kgs.)
- After installing the fan, make sure all the connections are secured. This will prevent the fan from falling.
- Do not insert anything into the fan blades while the fan is operating.
- Turn the fan off and wait for it to stop before reversing fan direction.
- To reduce risk of electrical shock and personal injury, do not install the fan on a sloped ceiling.
- To reduce the risk of electrical shock and personal injury, do not use this fan with any solid-state.
- To reduce risk of personal injury, use only the two steel screws and lock washers provided with the fan for mounting the outle box.

Risk Of Electric Shock



- Before you start installing this ceiling fan, disconnect the power supply by turning off the circuit breaker. (see the picture at the next page).
- All electrical connections must be in accordance with local and National Electric Code (N.E.C.) standards and ANSI/NFPA 70.
- Consult a qualified electrician if you are unfamiliar with proper electrical wiring connections.
- Do not alter, re-locate or remove wiring when nothing goes wrong with the product.
- Double-check all connections and screws to be sure they are tight and correct.
- Verify whether the supply voltage is correct by comparing it with the product information.

Risk Of Injury



- Keep all the parts of this product away from children. The package contains many small or heavy parts that may bring children the risk of choke or injury.
- Make sure to install all parts firmly enough in case they fall while running. Carefully check all screws, bolts, and washers on the fan assembly to ensure they are secured.
- Wear safety gloves and safety glasses always when installing or removing the light or the fan, or performing maintenance. Some parts of the components are sharp and may hurt your hands, please make sure you are wearing safety gloves when touching and installing the components.
- Wear rubber-soled shoes and work on a sturdy ladder.

Maintenance And Cleaning



- Periodically cleaning your ceiling fan is the only required maintenance. Use a soft brush or lint free cloth to avoid scratching the paint. Please turn off the electricity power before you clean your fan.
- Do not use water when cleaning your ceiling fan. It could damage the motor or the blades or even evoke an electrical shock.
- The motor has permanently lubricated ball bearing. No need to oil.

MAKE SURE THE POWER IS OFF IN THE ELECTRICAL PANEL BOX BEFORE YOU DO ANY CLEANING OR REPAIRS

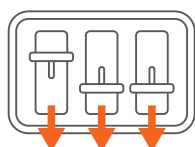


PRE-INSTALLATION ADVICE

Part 03

WARNING

To avoid serious injury or death, turn off the power at the circuit breaker before installing the fan.



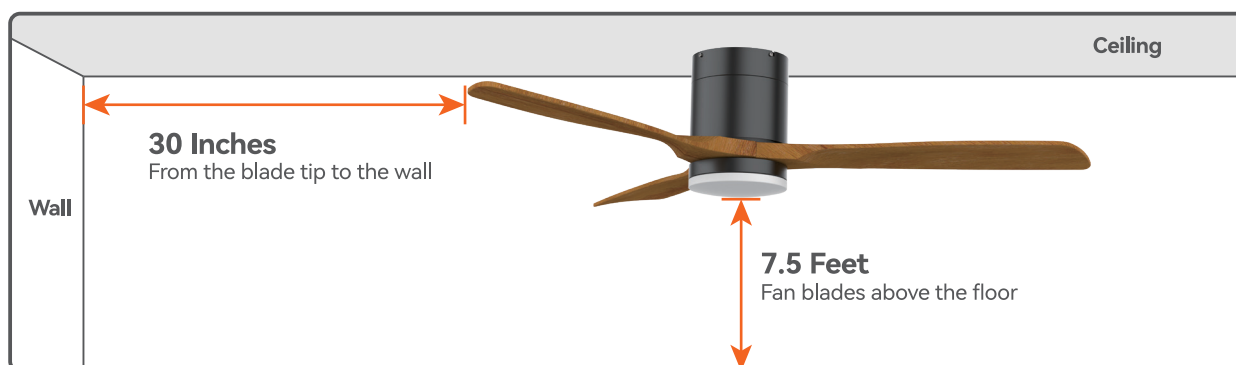
OFF

IMPORTANT

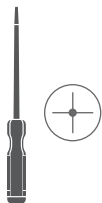
To avoid abnormal operation, do not connect the product to the dimmer switch or fan speed switch.



INSTALLATION DISTANCE REFERENCE



TOOLS NEEDED



Phillips Screwdriver



Wire Stripper



Step Ladder

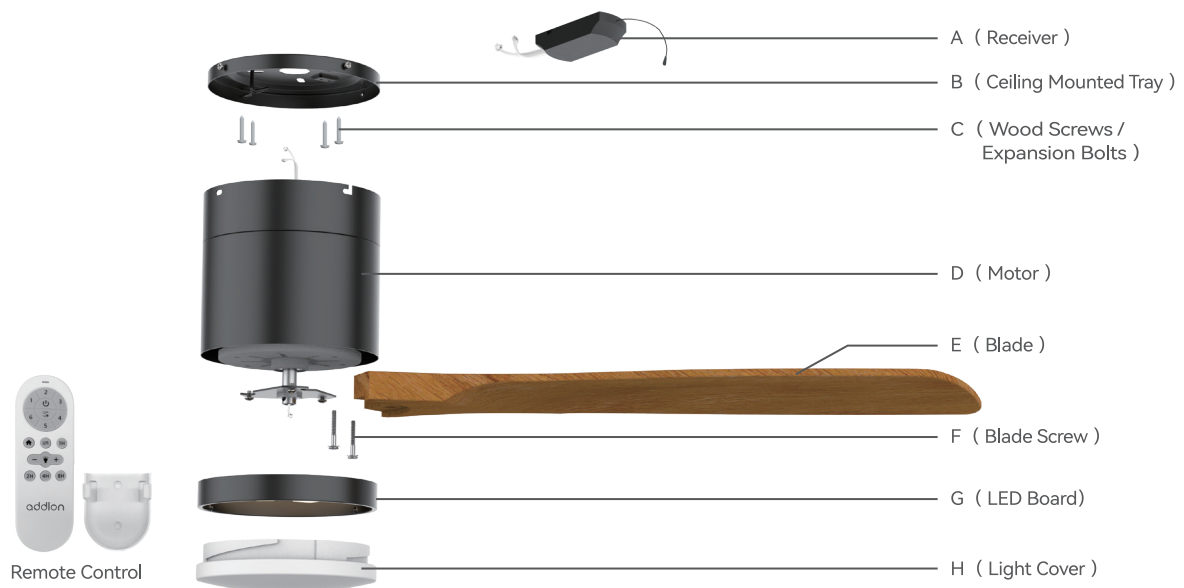


Safety Gloves



ACCESSORIES LIST

Ceiling fan with light



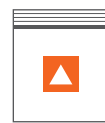
Section 1

Ceiling Mounted Tray

B x1



C



Screw package* ▲ *



C1 x4
Wood Screws

or



C2 x2
Expansion Bolt

or

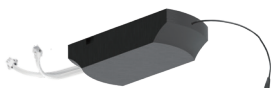


C3 x2
Electrical Box Screw

Section 2

Motor

A x1



D x1



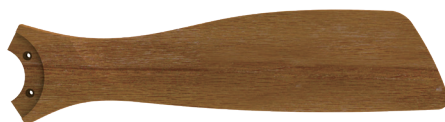
I x3



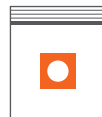
Section 3

Blades

E x3



F



Screw package* ● *



×6
M6 x 35mm

Section 4

Light Kit

G x1



H x1



If any parts are missing or broken, please contact us.

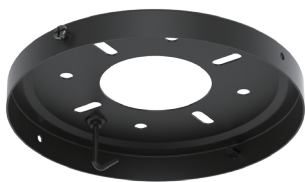
Section 1



Ceiling Mounted Tray

Let's move towards success
with a relaxed start !

NEEDED ACCESSORIES



B × 1



Screw package* ▲ "



or



or



C₁ × 4
Wood Screws

C₂ × 2
Expansion Bolt

C₃ × 2
Electrical Box
Screw



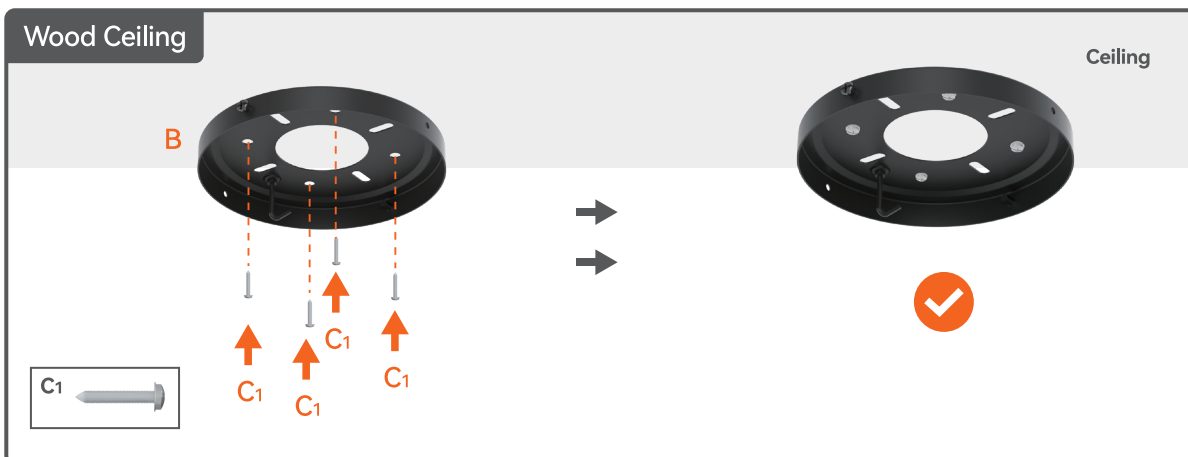
Difficulty Level: ★ ★



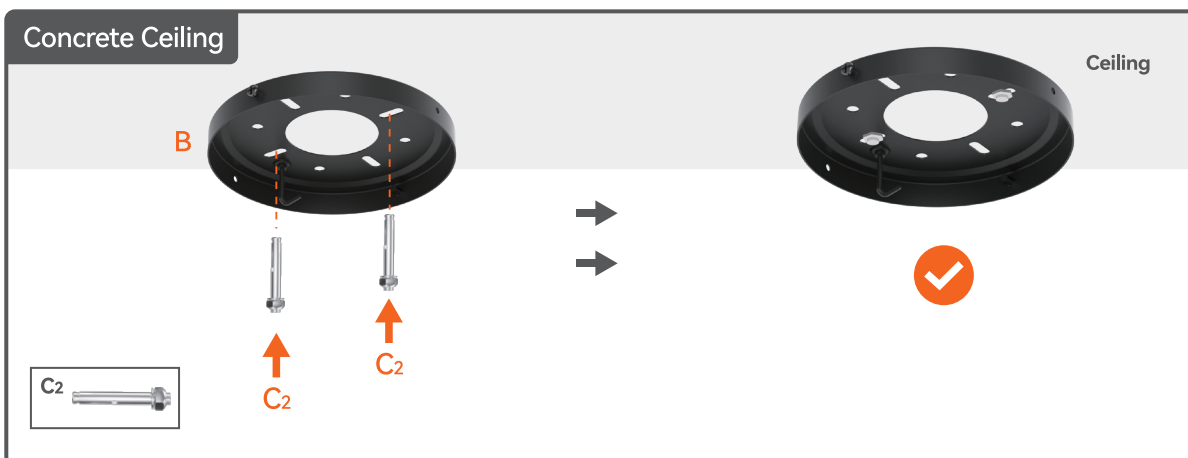
INSTALLATION STEPS



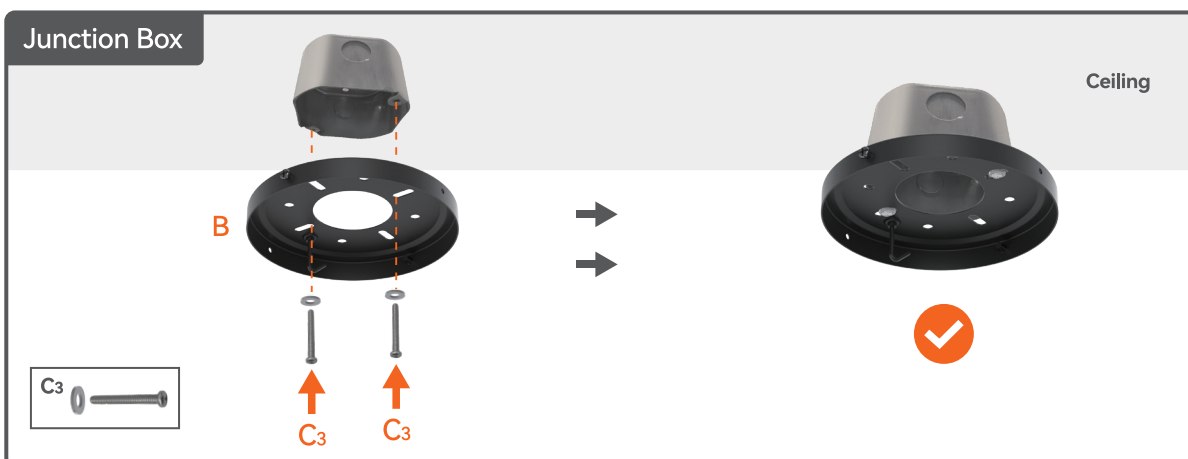
According to your ceiling type, choose the appropriate screws.



or



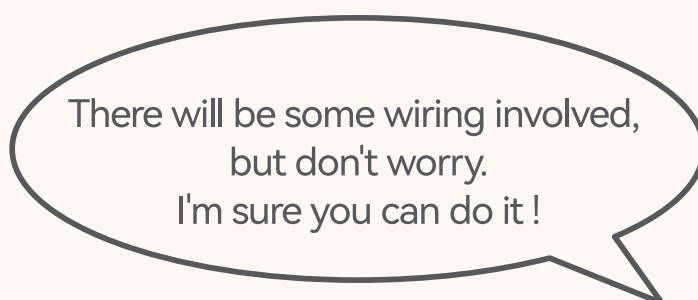
or



Section 2



Motor



NEEDED ACCESSORIES	
 Section 1	 A ×1
 D ×1	 I ×3



Difficulty Level: ★ ★ ★



INSTALLATION STEPS



Ceiling Mounted Tray

Motor

Blades

Light Kit

Step 1

Raise the fan and align the round hole in the canopy with the hook on the ceiling plate, hang for easy wiring.

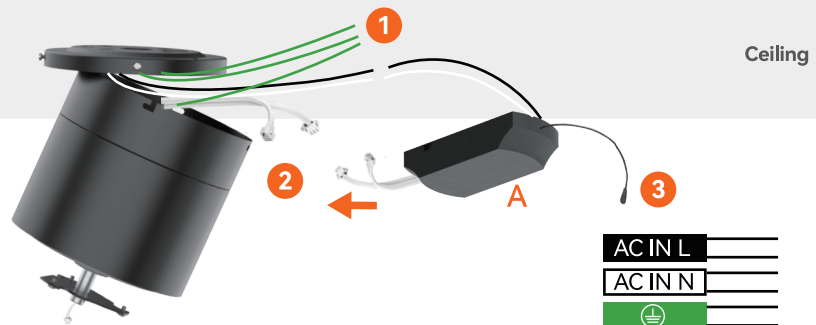


Step 2

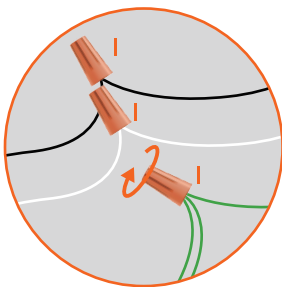


WARNING

All wiring must be in accordance with national and local electrical codes ANSI/NFPA 70. If you are unfamiliar with wiring or in doubt, consult a qualified electrician.



1



Using the wiring cap, complete the wiring from the ceiling and controller.

White Wire: Connect to the Neutral
Black Wire: Connect to the Live
Green Wire: Connect to the Ground

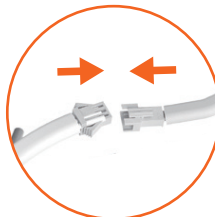
⚠ Ground wire color may not match actual color, please be careful to identify.

2

Make sure the pairs are inserted tightly.

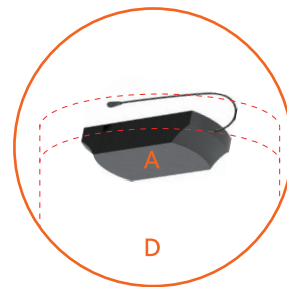


Ceiling fan with light



Ceiling fan without light

3



D

Make sure the antenna is not squeezed.



INSTALLATION STEPS



Ceiling Mounted Tray



Motor



Blades

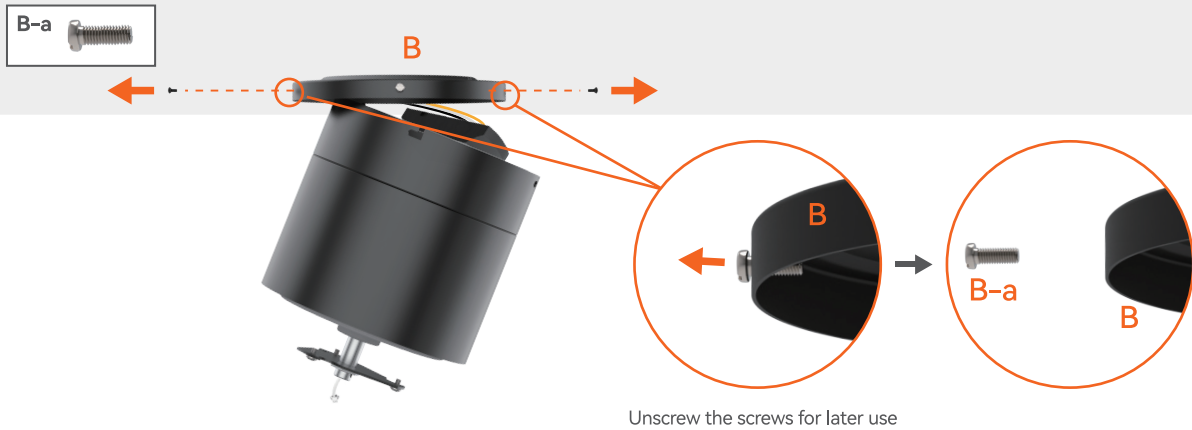


Light Kit

Step 3

Unscrew 2 screws (B-a) on each sides and loosen the other two.

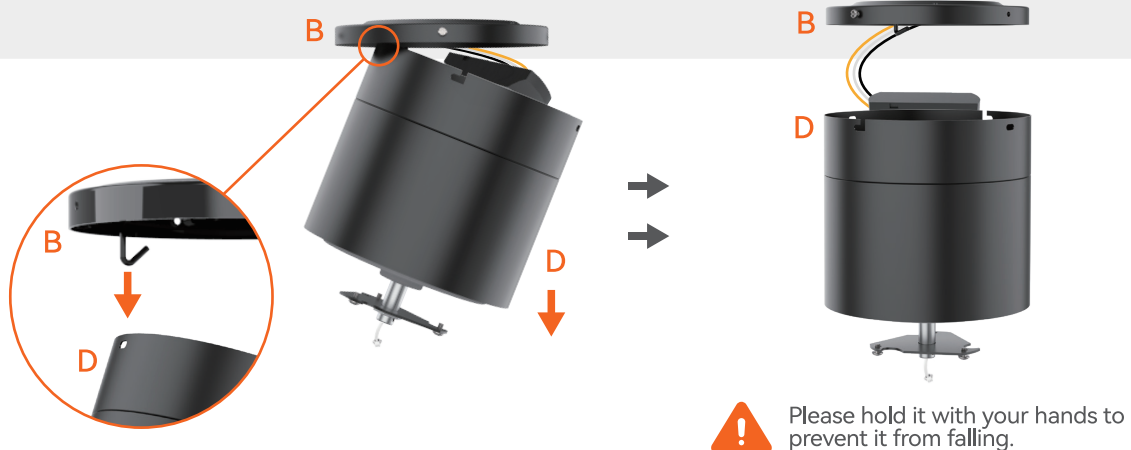
Ceiling



Step 4

Remove the fan from the hook and align the screw on the ceiling plate with the L-shap slot hooks in the canopy.

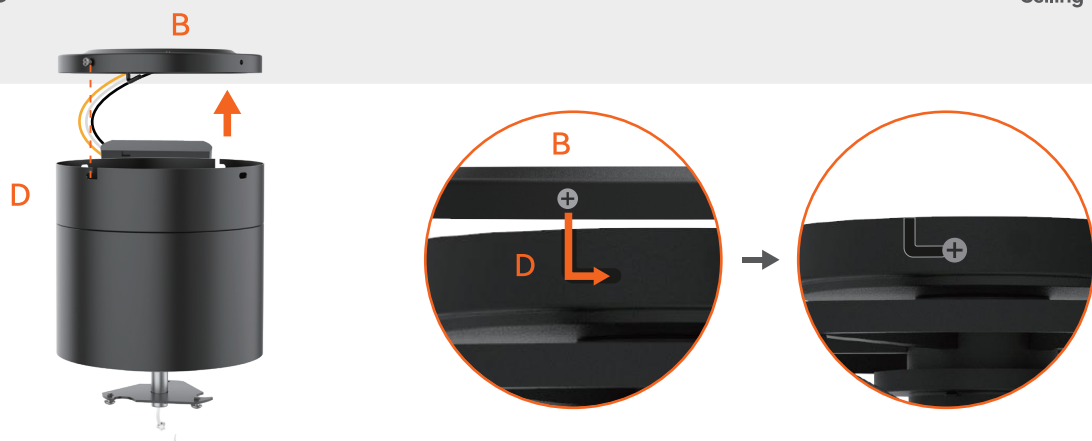
Ceiling



Step 5

Slightly rotate the body to make it in position.

Ceiling





INSTALLATION STEPS



Ceiling Mounted Tray



Motor



Blades

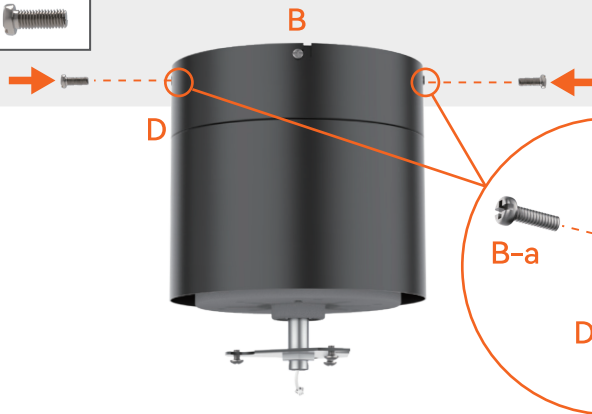


Light Kit

Step 6

Install the 2 screws (B-a) and tighten all 4 screws in 4 sides

Ceiling



Good!
You've finished the main part!

Section 3



Blades

There is some repetitive work in this part. Please be more patient. Victory is ahead!

NEEDED ACCESSORIES	
 Section 2	
 E x3	 Screw package " "   M6 x 35mm F x6



Difficulty Level: ★ ★ ★



INSTALLATION STEPS



Step 1



×3

D

E

F

D

E



TO REDUCE THE FAN WOBBLE:

PLEASE CHECK THAT ALL SCREWS WHICH SECURED THE MOUNTING BRACKET AND DOWNROD ARE TIGHTENED.



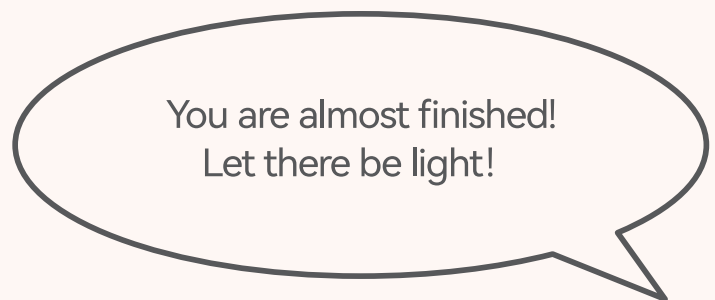
Great!
Now please relax your arms and
accumulate strength for
the final section!

Section 4

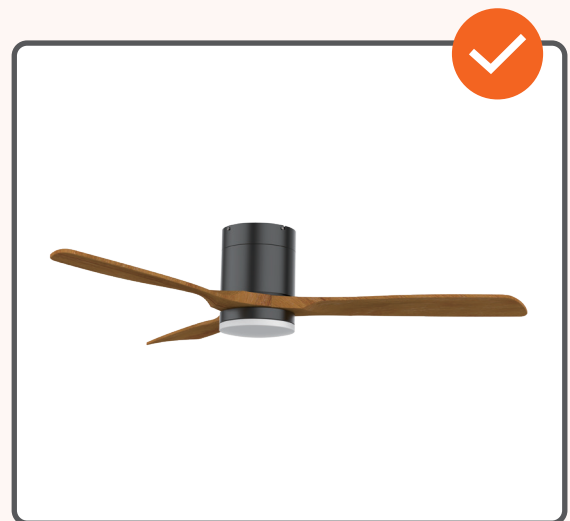


Light Kit

(Ceiling fan with light)



NEEDED ACCESSORIES	
	
Section 3	
	
G × 1	H × 1



Difficulty Level: ★ ★

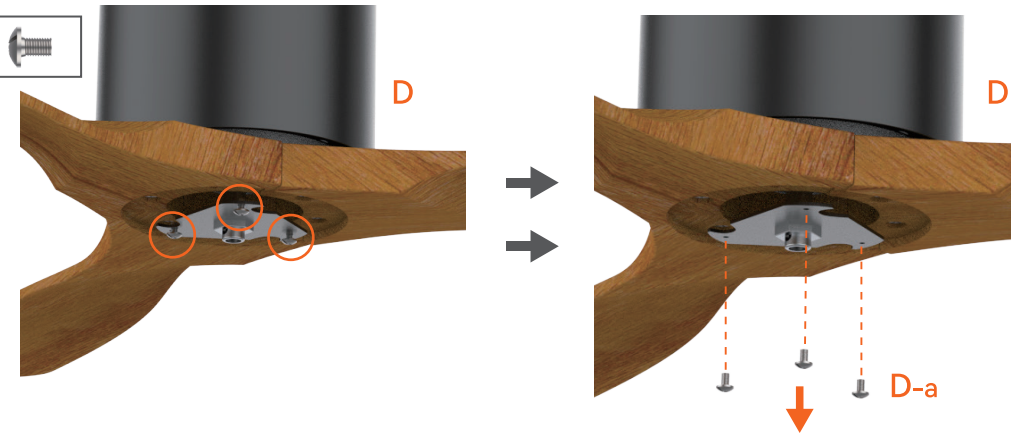


INSTALLATION STEPS



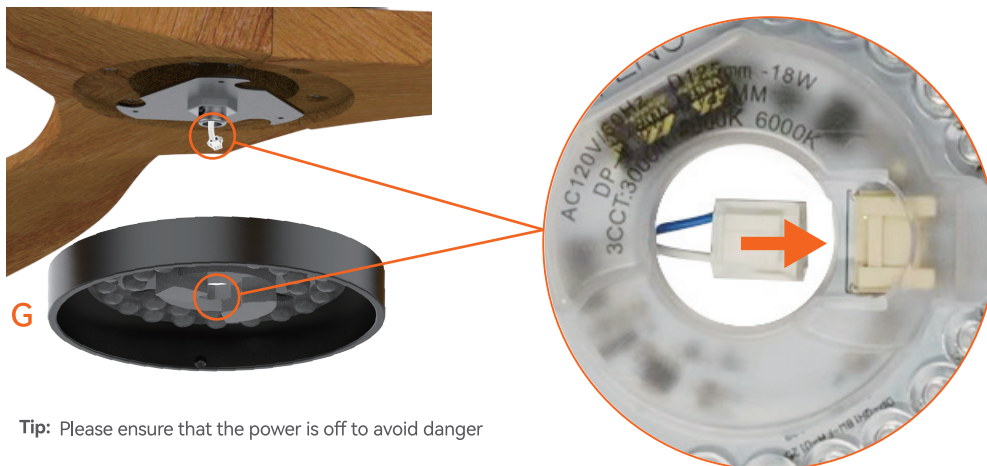
Step 1

D-a



Step 2

Plug the terminal pairs tightly.



Tip: Please ensure that the power is off to avoid danger

Step 3

Note: Turn on the switch and select the color temperature that suits your room before installing the lampshade.

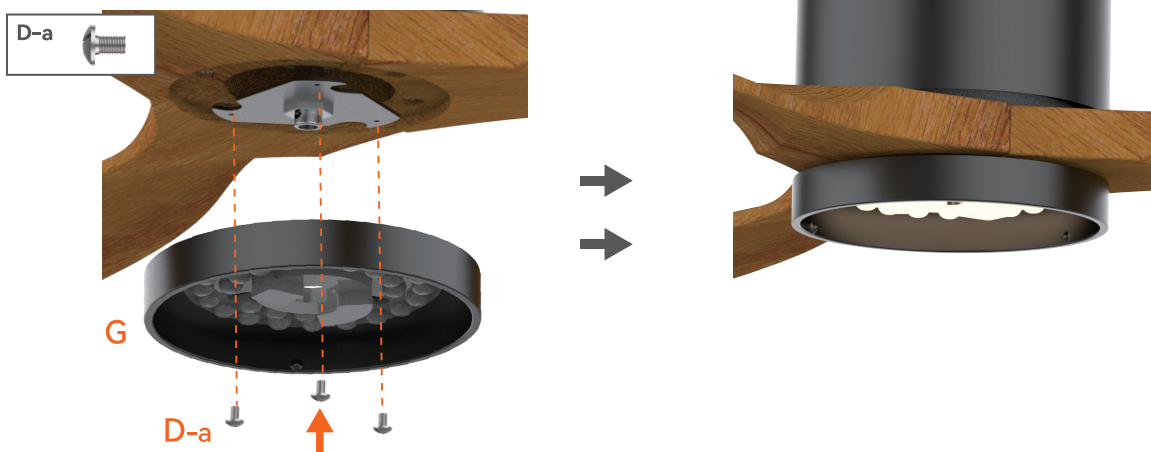




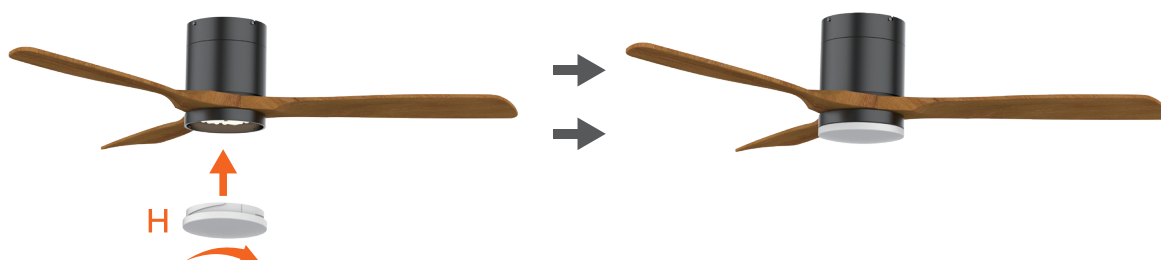
INSTALLATION STEPS



Step 4



Step 5



Step 6



Excellent!
Congratulations on becoming
a great **DIYer**!
Now enjoy your Fan!



REMOTE CONTROL

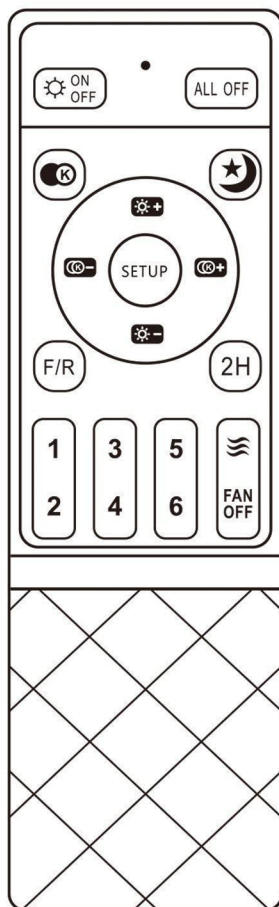
Ceiling fan without light



- **Install 1.5*2 volt battery.**
(To prevent damage to transmitter, remove the battery if not used for a long time).
- **Do not place the remote control in an excessively hot or humid environment**

Remote Control Manual

Press and hold the commercial code within 5 seconds of power on, and the light will flash to complete. After successfully matching the code, short press to open the Starry Sky Top/Auxiliary light/light strip (some products do not have auxiliary light function)



- Turn on/off the lights
- Total shutdown (disable all functions) decoding
Decoding: Within 5 seconds of power on, long press until the light flashes
- White light/warm light/neutral light switching
- Night light mode
- Brightness decreases/increases
- Color temperature decrease/increase
- ①-⑥ Wind speed levels 1-6
- Fan forward/reverse switching (some products do not have this function)
- 2H 2-hour timed schedule
- Long press natural wind
- FAN OFF Turn off the fan
- Code pairing/auxiliary light (some products do not have auxiliary light function). Press and hold within 5 seconds after powering on, and the light will flash to complete the code pairing

Note: After powering on, please turn off the lights for at least 5 seconds before turning on the power for code verification!



COMMON TROUBLESHOOTING

Part 08



NOISE

When it is quiet (especially at night) you may hear occasional small noises. This is normal. Please allow a 24-hour “breaking-in” period, most noises associated with a new fan disappear during the time.

Your fan may occasionally jerk forward or backward upon starting up. This is normal and does not affect the fan operation. Try these troubleshooting steps before contacting customer service.

Problem	Solution
Fan not spinning	<ul style="list-style-type: none">• Make sure the fan is getting power.• Check your circuit breaker or fuse panel and wall switch for functionality.• Check to make sure the fan wires are correctly connected to the house wires.• Remote control must be paired with the fan within 1 minute after connecting the fan to the electricity.• Use a multi-meter and test the adapter wiring harness to see if there is any electrical output.• All the pin wiring on the circuit board must be inserted tight and in the correct position.• Remote needs to be paired with the fan first.• Make sure the fan blades spin freely.• If you're using a wall control, check the power to the breaker from your control and try working your ceiling fan manually. (Normal switch only for the fan power on/off)
Fan light not working	<ul style="list-style-type: none">• Make sure LED wires are connected to the circuit board.• Make sure the whole fan is powered.
The fan is noisy and wobbling	<ul style="list-style-type: none">• Check if the blade screws are NOT rubbing against any part of the motor housing.• Check the pin wires are NOT connected against any moving parts.• Check the down fan cup is NOT hitting the motor.• Confirm the canopy is NOT touching the ceiling while the fan is in operation.• Check the down rod is NOT slanted.• Tighten any loose screws on the light kit, fan blades, motor coupling, down rod, brackets and mounting hardware.• Confirm the hanger ball is firmly seated in the mounting bracket.• The ceiling beam must meet the minimum tensile test strength of 30KG for installation.• Make sure the blades and brackets are NOT bent or deformed.• Verify the wire connections are not rattling against each other.• Verify the fan blades are not cracked. If the fan blades are cracked, replace the damaged blades with a new blade set from the same brand as your ceiling fan to ensure compatibility.• Confirm the light kit is NOT slanting and hitting the motor.
The fan or light automatically turns on/off	<ul style="list-style-type: none">• Confirm the circuit breaker is not malfunctioning.• Verify the wire connections are not frayed.• Check the app is not set to a timer or schedule.• Cut the fan power for 10 minutes then power on again.• All the pin wiring on the circuit board must be inserted tight and in the correct position.