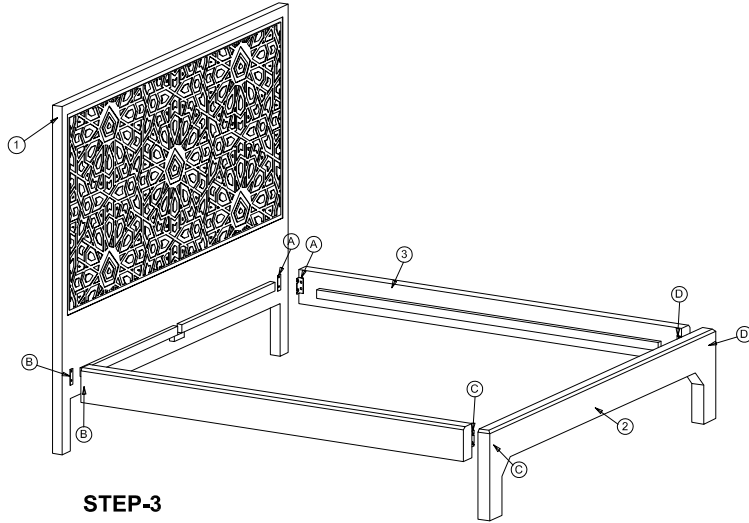


ASSEMBLY INSTRUCTIONS SHEET FOR BED

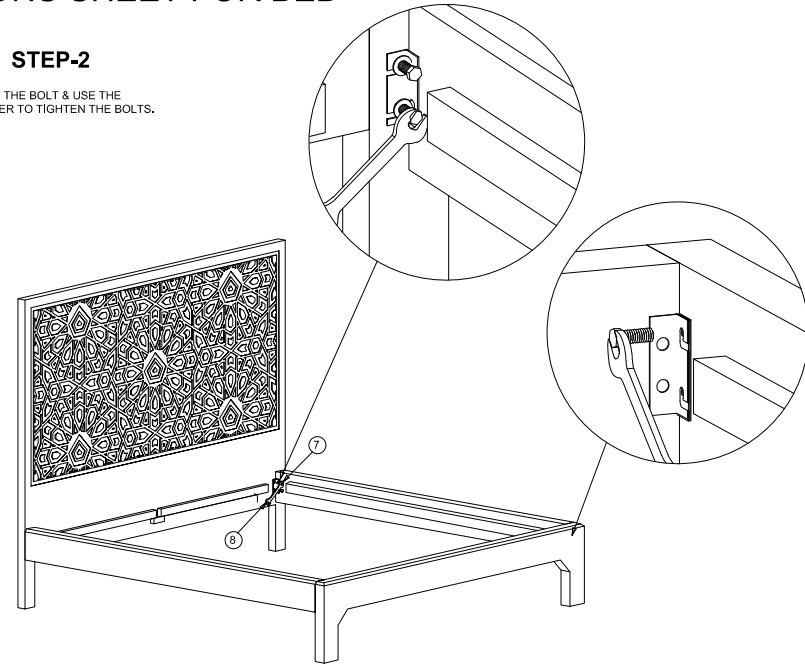
STEP-1

LAYOUT HEAD BOARD , FOOTBOARD AND SIDE RAILS. MAKE SURE SIDE RAILS DIRECTION COORDINATES WITH NUMBERS ON FOOTBOARD AND HEADBOARD. ALIGN THE HOLES OF METAL "L" BRACKET ON SIDE RAIL WITH HOLES OF METAL PLATE ON HEAD BOARD & FOOT BOARD, MIGHT NEED TO APPLY PRESSURE ON SIDE RAILS FOR HOLE ALIGNMENT.



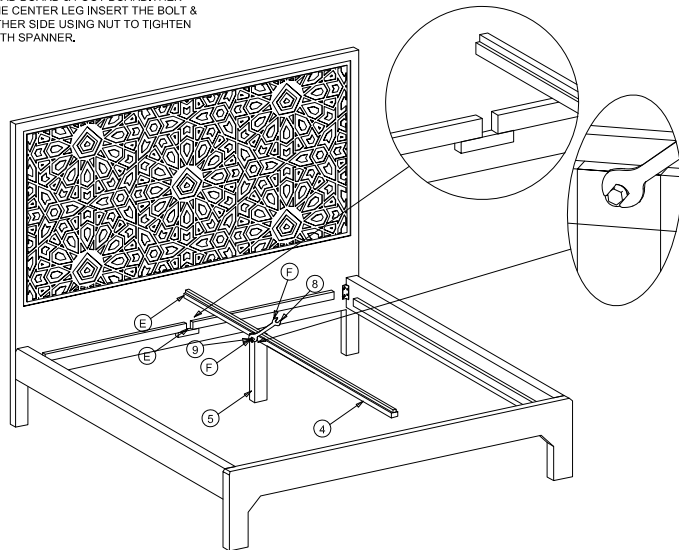
STEP-2

INSERT THE BOLT & USE THE SPANNER TO TIGHTEN THE BOLTS.



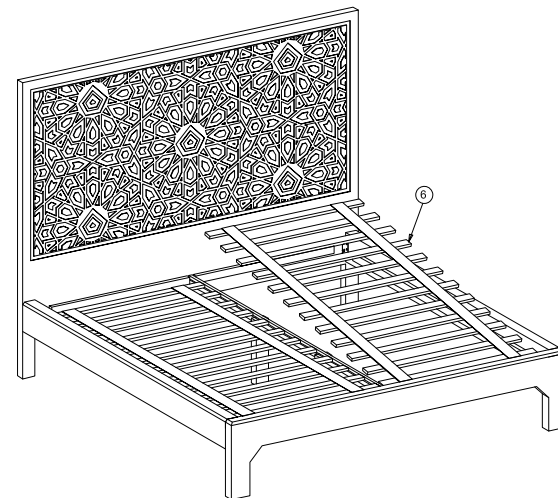
STEP-3

POSITION THE CENTER SUPPORT WITH MATCHING THE NUMBERS ON CENTER SUPPORT WITH THE NUMBERS ON HEAD BOARD & FOOT BOARD, THEN THE CENTER LEG INSERT THE BOLT & OTHER SIDE USING NUT TO TIGHTEN WITH SPANNER.



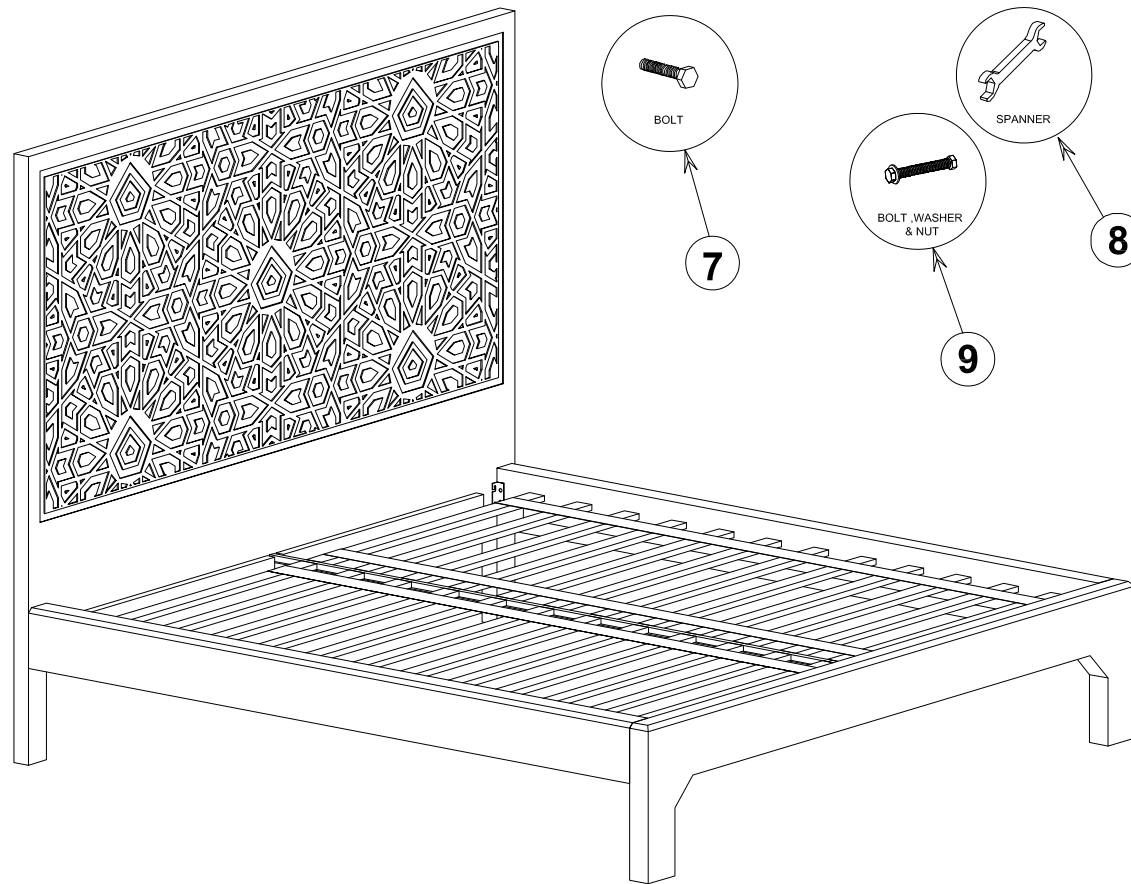
STEP-4

PLACE THE WOODEN SLATS ON TO THE SIDE FIRST & THEN ON CENTER SUPPORT.



ASSEMBLY INSTRUCTIONS SHEET FOR BED

ASSEMBLED VIEW



FTG-PBK

SIZE : (MS 77X81 INCH)

S.No.	PART LIST	QTY.
1	HEADBOARD	1
2	FOOTBOARD	1
3	SIDE RAIL	2
4	CENTER SUPPORT	1
5	CENTER LEG	1
6	WOODEN SLAT	2Set
7	BOLT (10X20mm)	9
8	SPANNER (16X17mm)	1
9	BOLT, WASHER & NUT (10X100mm)	1