

## The Southshore Difference

### ✓ Southshore



#### Durable Stitched Quilting

Traditional stitching keeps fill secure and prevents shifting.



#### Quilted Both Sides + Envelope Closure

Fully quilted front and back with a clean envelope finish.



#### Oversized for Better Coverage

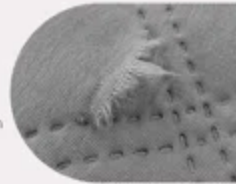
Designed larger to provide fuller drape on your bed.

**Our King/Cal King oversized quilt is 108 inches wide x 98 inches long**

### ✗ Typical Quilts

#### Embossed Pattern

Adhesion used to form the pattern may weaken over time.



#### Front Quilted Only

Back side often left plain with no quilting.



#### Standard Size Coverage

Smaller sizing may leave less coverage on the bed.



**Standard King Size is 102 inches wide x 86 inches long**