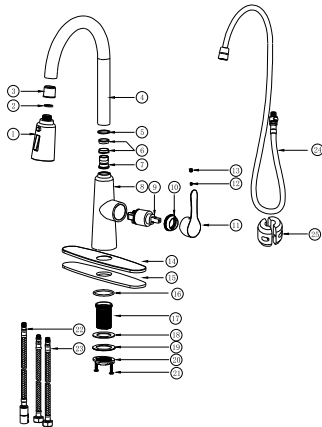
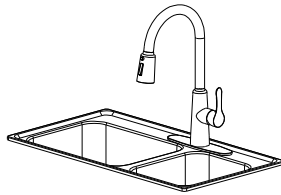
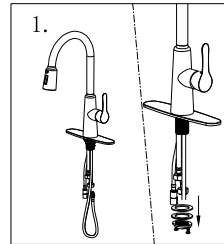


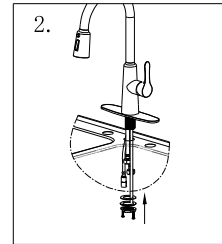
Product installation instructions



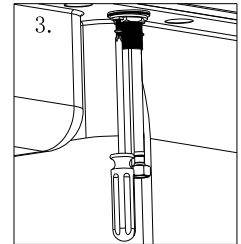
25	Gravity ball	Cast iron	1
24	Base	Combination cast	1
23	Water inlet pipe	Combination cast	2
22	Outlet pipe	Combination cast	1
21	Round head screw	Stainless steel	2
20	Decorative nut	Stainless steel	1
19	Ring	Stainless steel	1
18	Flange	Rubber	1
17	Decorative tube	Stainless steel	1
16	O-ring	Rubber	1
15	Flange	Iron	1
14	Flange	Stainless steel	1
13	Decorative button	Plastic	1
12	Hexagonal nut	Stainless steel	1
11	Handle lever	Stainless steel	1
10	Clamp	Stainless steel	1
9	Spout	Combination cast	1
8	Subject	Stainless steel	1
7	Lock pin screw	Stainless steel	1
6	Decorative	Iron	2
5	Water resistant ring	Stainless steel	1
4	Carved pipe	Stainless steel	1
3	Decorative	Iron	1
2	Flange	Rubber	1
1	Spout	Plastic	1
Number	Name	Material	Quantity



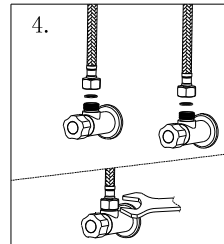
1. Take out the faucet from the package, unscrew the retaining nut, and take out the steel pad and rubber pad.



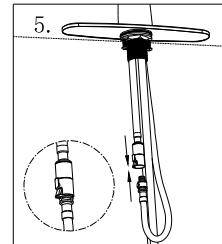
2. Insert all water pipes into the openings of the sink, and then reinstall the rubber pad, steel pad and retaining nut.



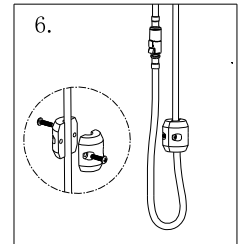
3. Tighten the two round head screws with a screwdriver.



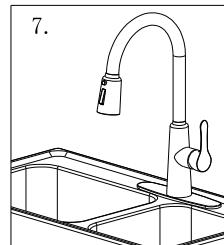
4. Connect the inlet pipe to the outlet angle valve and tighten it.



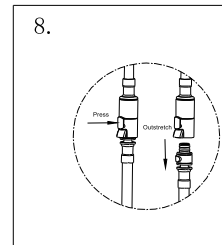
5. Connect the inlet and outlet pipe



6. Install gravity ball.



7. Installation complete.



8. Pipe disassembly method.