

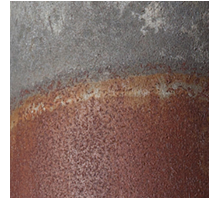


45v Pendant Rust/Zinc GP2002-Z

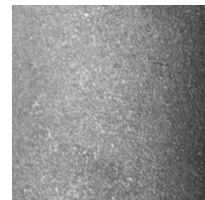
Available colors





Natural



Rust/Zinc



Zinc

	North America	Europe
Bulb	Max 15W LED, GU10, 120V	Max 15W LED, GU10, 220-240V
Color temperature	2700K (recommended)	2700K (recommended)
Lumen output	Dependent on bulb	Dependent on bulb
Cord	Black, 6.5ft (16ft available)	Black fabric, 2m (5m available)
Canopy	Black powder coated, Ø 5, H 1 (in)	Black powder coated, Ø 10, H 2.5 (cm)
Material	Naturally rusted & zinc-coated steel	Naturally rusted & zinc-coated steel
Size	Ø 2.5, H 18 (in)	Ø 6, H 45 (cm)
Weight	4.6lbs	2.1kg
Country of origin	The Netherlands	The Netherlands
Certification		

For use in dry location. After the natural oxidation process, all items are treated to stop further rusting. The material will not come off or stain.

Designed in Seattle, Washington, USA.

Custom cords and canopies are available. Contact our offices for more information.