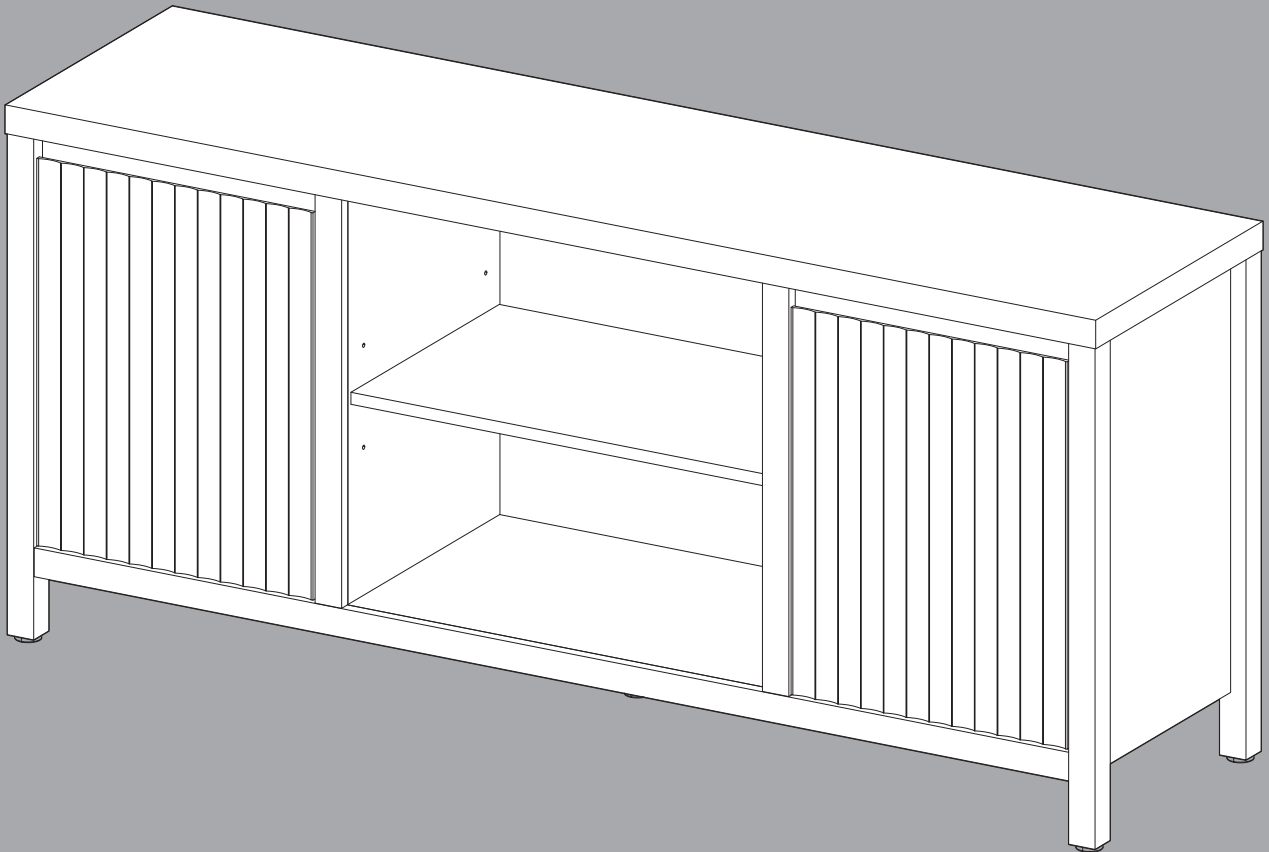


Installation & Assembly



Assembly Instructions

Before beginning the assembly process, please read and save these instructions for reference.

Following these guidelines will ensure a smooth and successful assembly of your product.

1. Part Identification:

Carefully separate and identify all the parts included in your package. Confirm that you have all the components listed in the instruction manual. This step will help you avoid any missing or misplaced parts during assembly.

2. Work Surface:

To prevent any scratches or damage to the product, assemble it on a soft mat or a similar protective surface. This will provide a cushioned area for the components and protect the surfaces from unwanted marks.

3. Step-by-Step Assembly:

Follow the assembly instructions provided, proceeding one step at a time. Take care to understand each step properly before proceeding to the next one. This sequential approach ensures that the assembly is done correctly and minimizes the chance of errors.

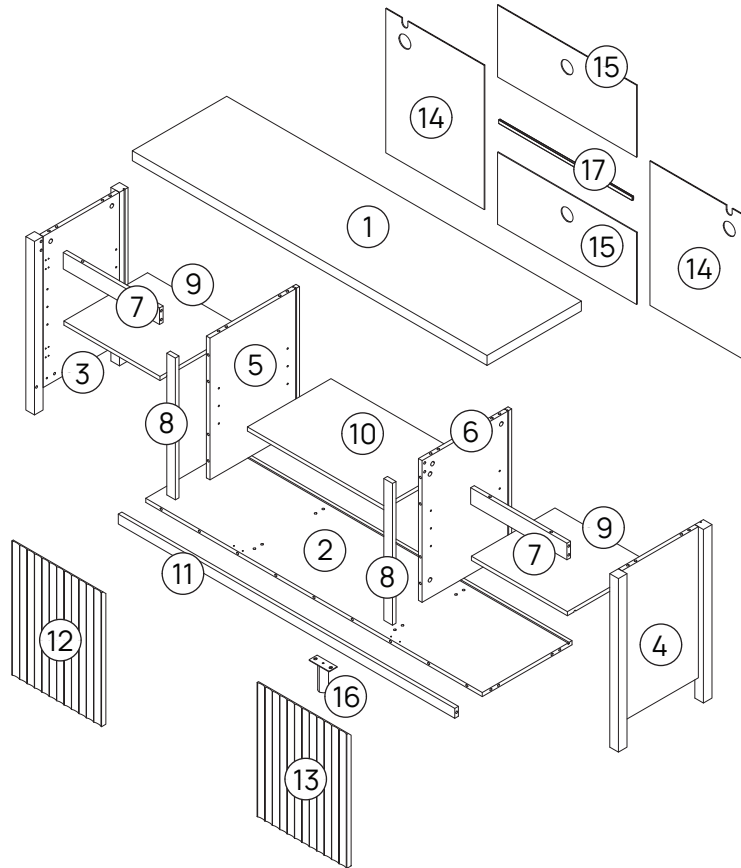
4. Proper Screw Seating:

When attaching screws and nuts, it is essential not to fully tighten them until all screws are correctly seated. By partially tightening each screw and nut initially, you can ensure that they are aligned properly and fit securely before final tightening.

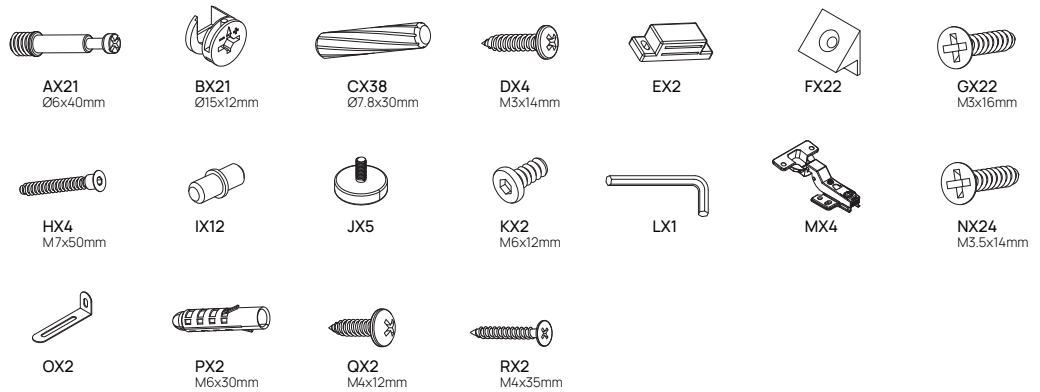
5. Avoid Over-Tightening:

While each screw and nut should be tightened correctly, it is crucial not to over-tighten them. Over-tightening can cause damage to the product or compromise its structural integrity. Use the appropriate amount of force to secure the components without excessive tightening.

Parts List

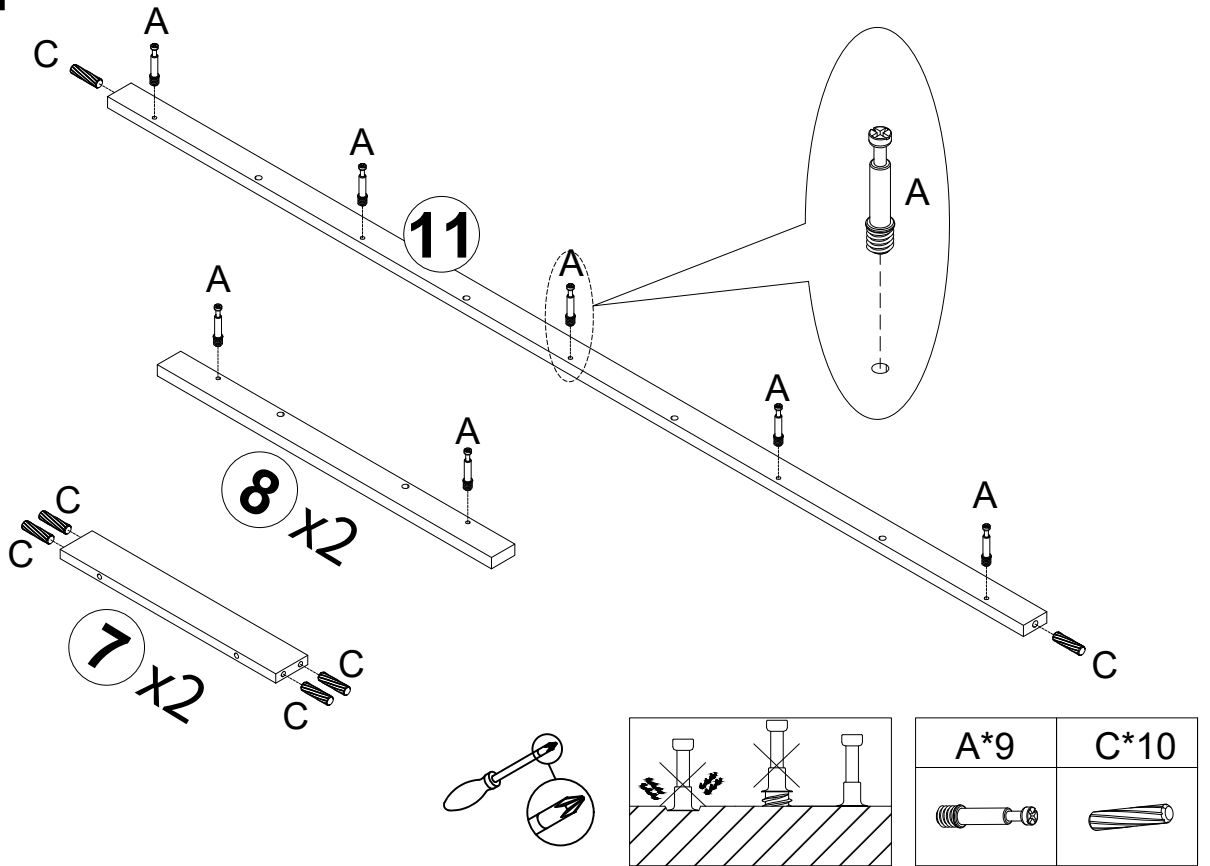


Hardware List

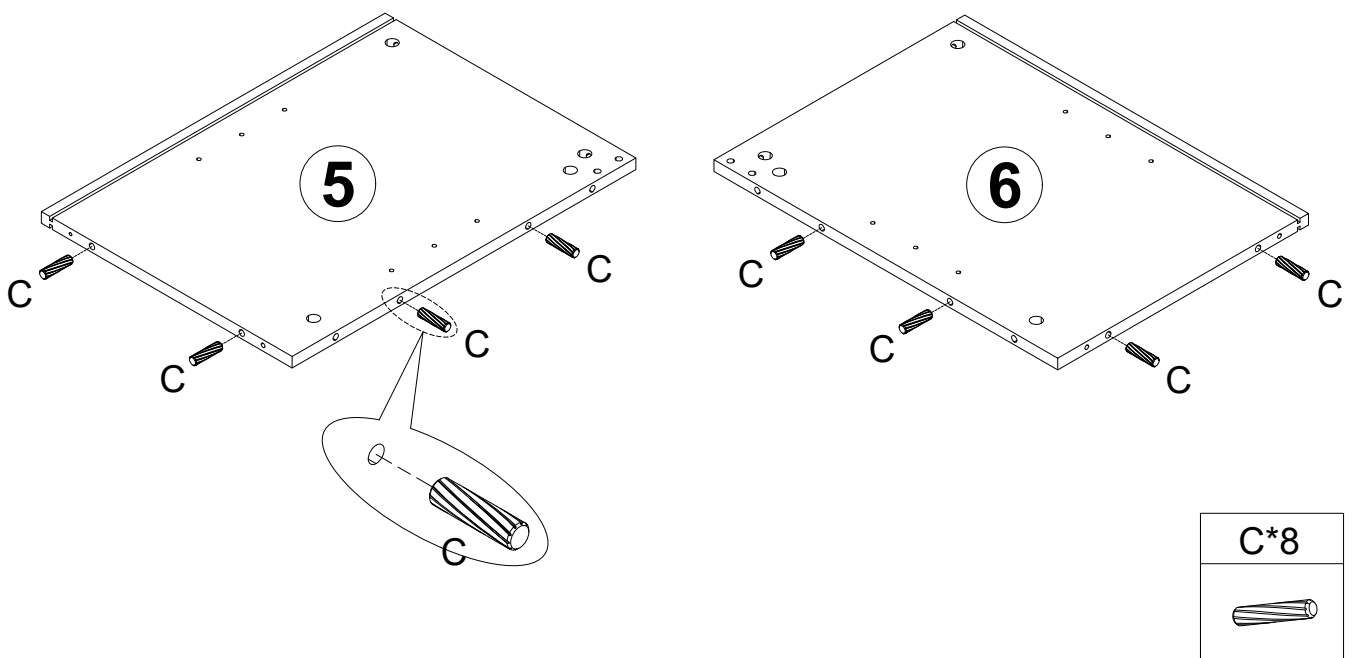


Code	Description	Quantity	Code	Description	Quantity
A	Ø6*40mm Cam lock	21+2	L	Hexagon socket wrench	1
B	Ø15x12mm Cam bolt	21+2	M	Hinges	4
C	Ø7.8x30mm Wood dowel	38+2	N	M3.5x14mm	24+2
D	M3x14mm	4+1	O	Lock wall accessories	2
E	Door stop	2	P	M6x30mm Plastic expansion screw	2
F	Backboard clip	22+2	Q	M4x12mm	2
G	M3x16mm	22+2	R	M4x35mm	2
H	M7x50mm	4+1			
I	Movable Shelf	12+1			
J	Adjustable foot	5+1			
K	M6x12mm	2			

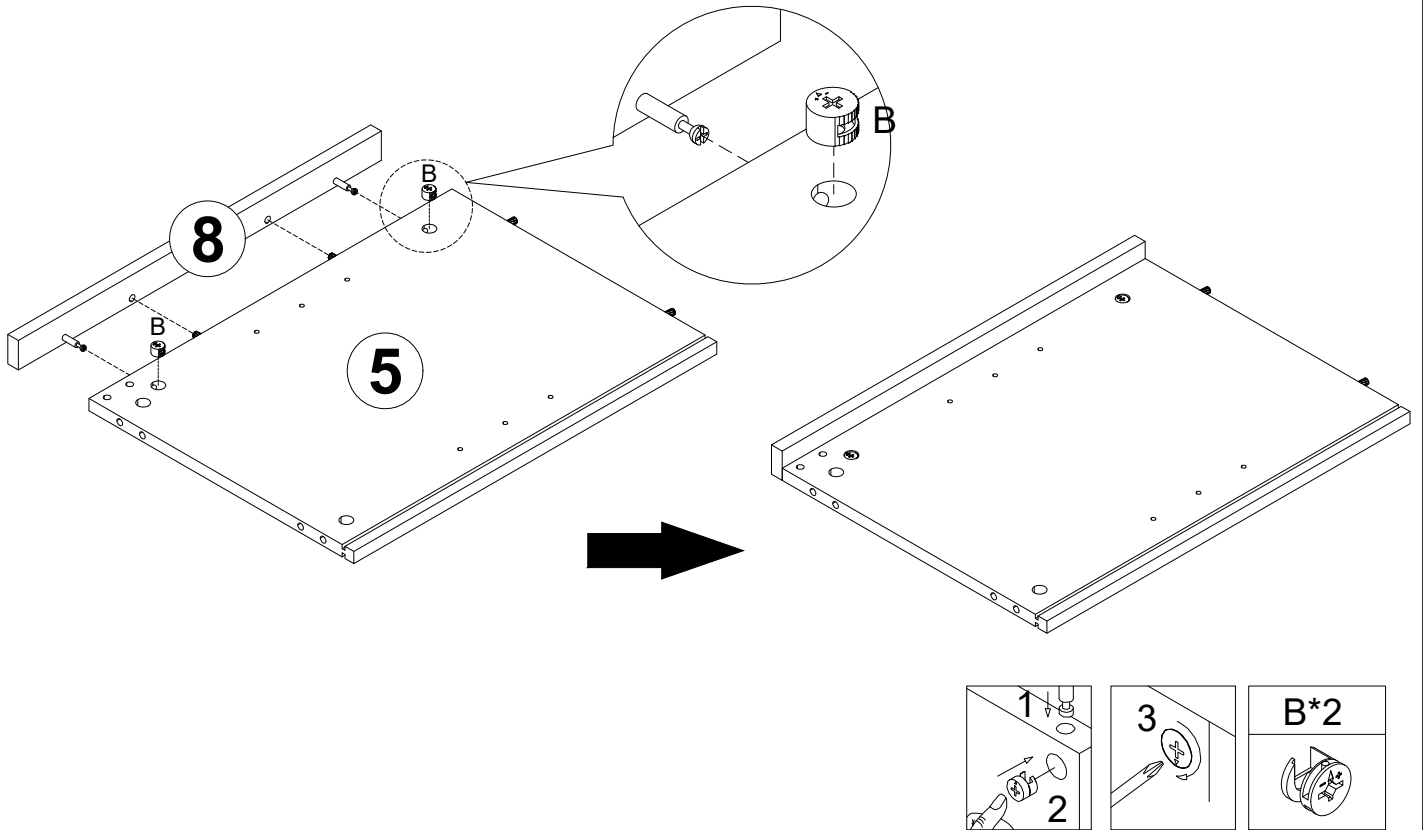
Step 1



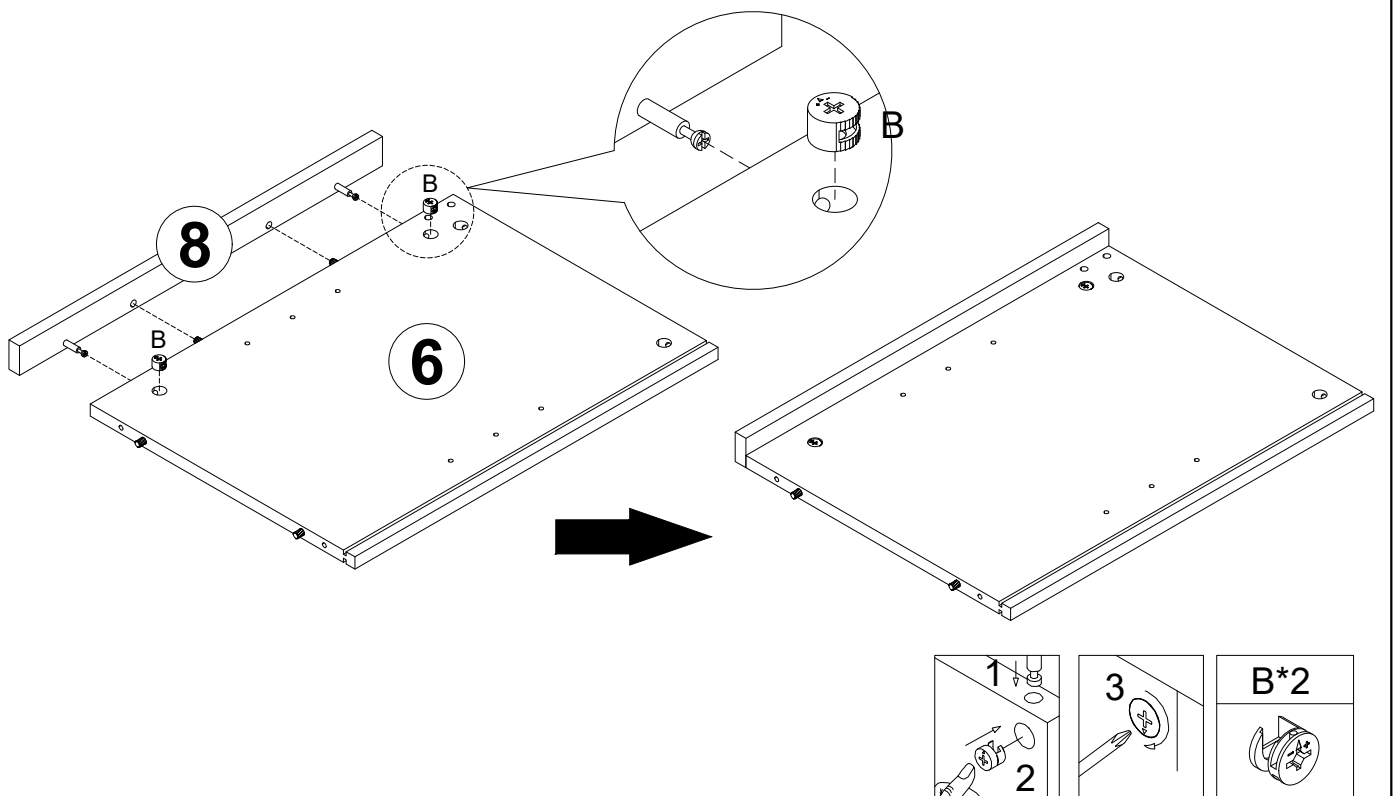
Step 2



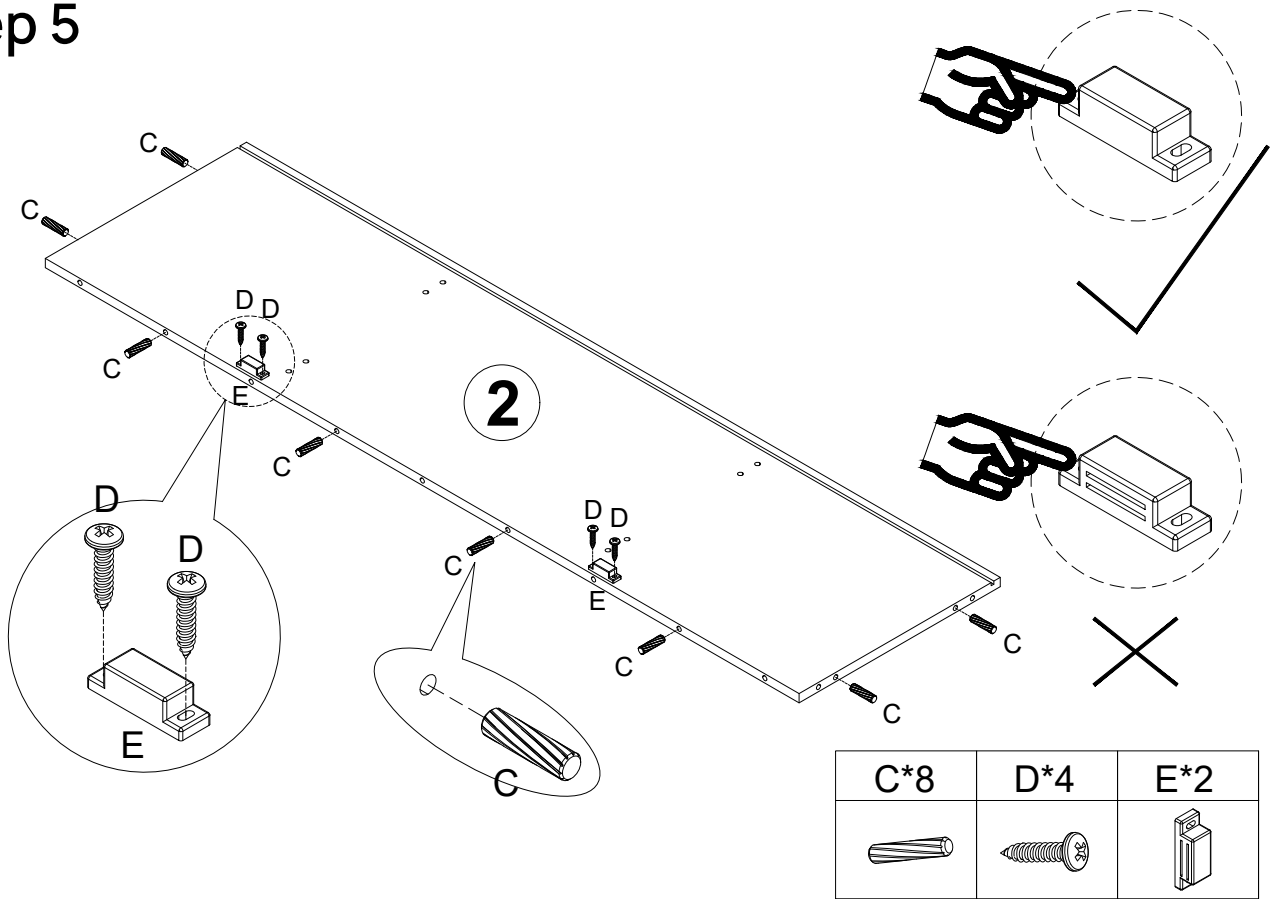
Step 3



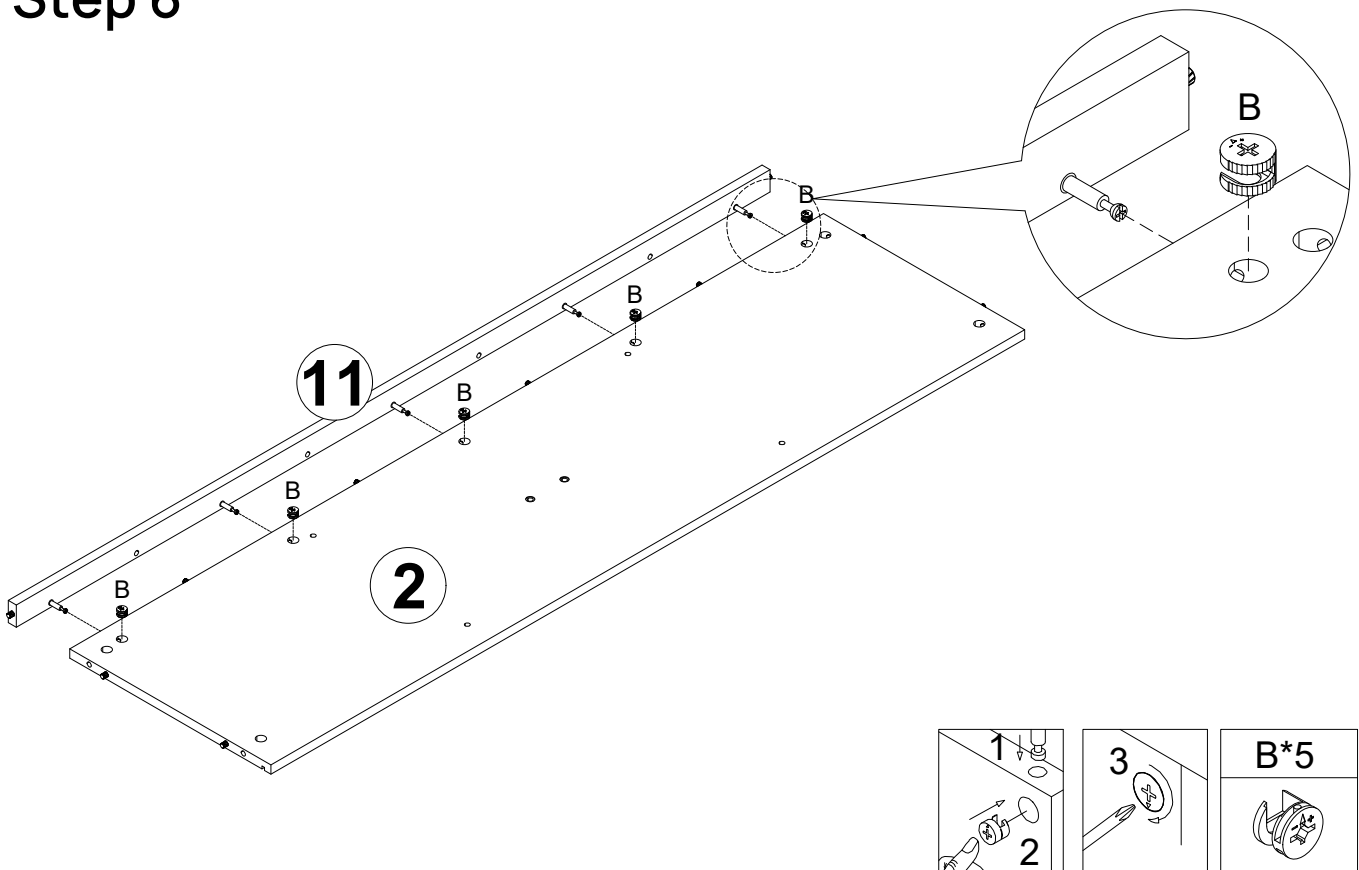
Step 4



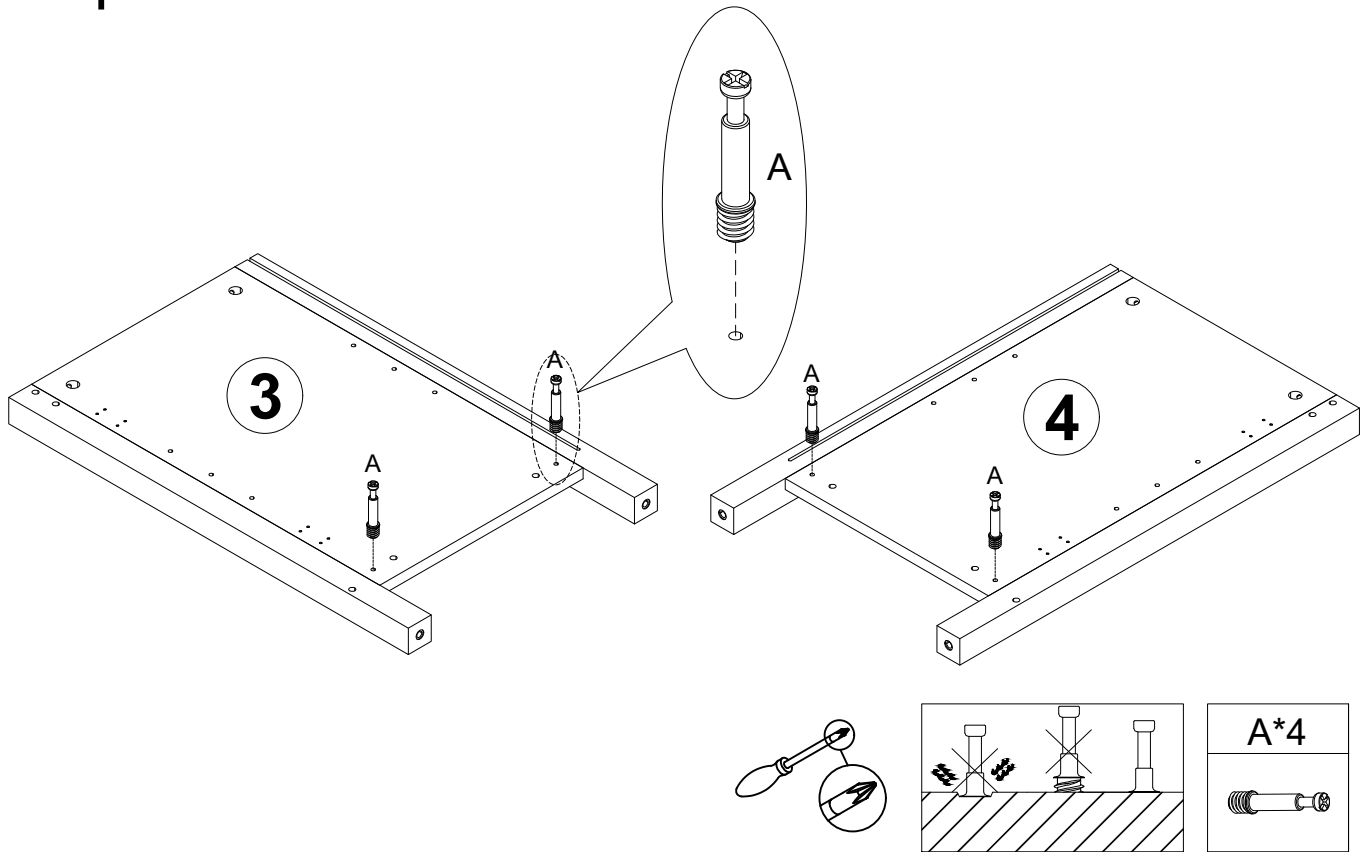
Step 5



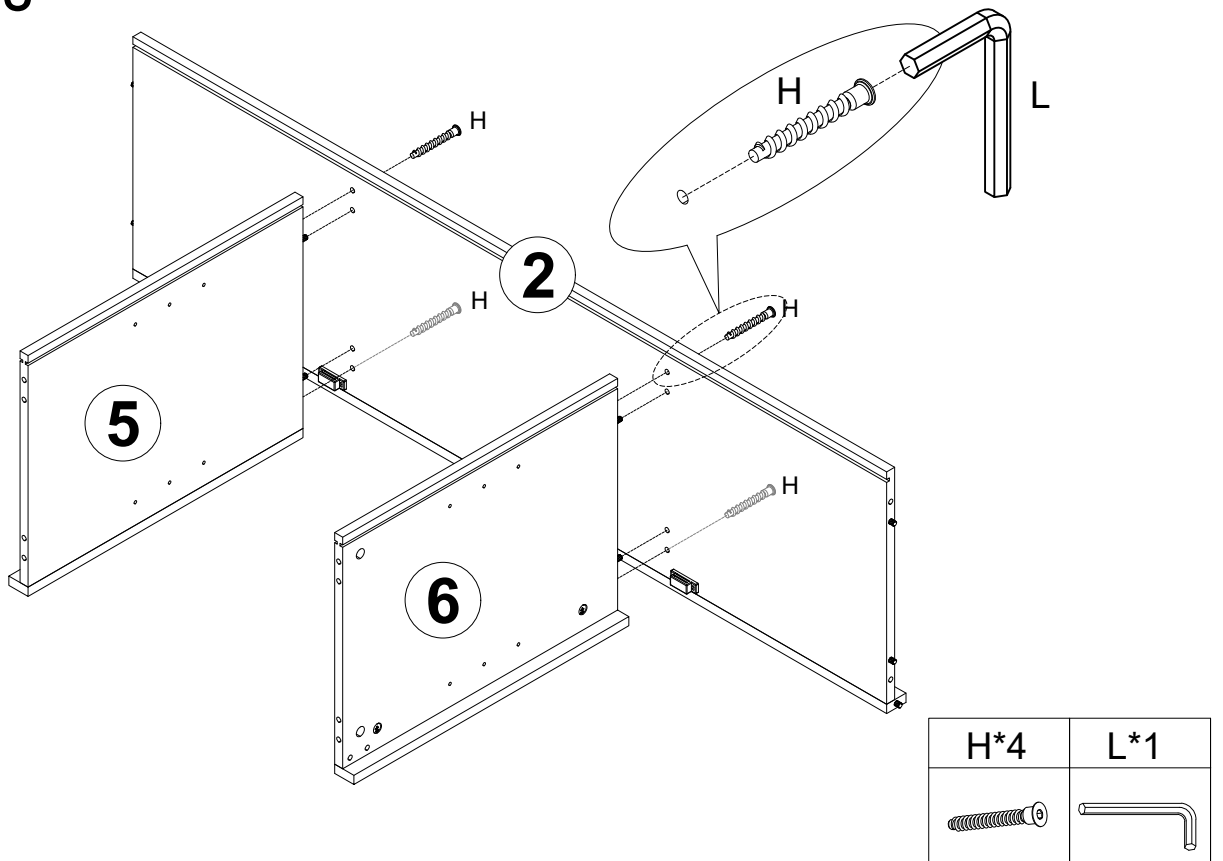
Step 6



Step 7

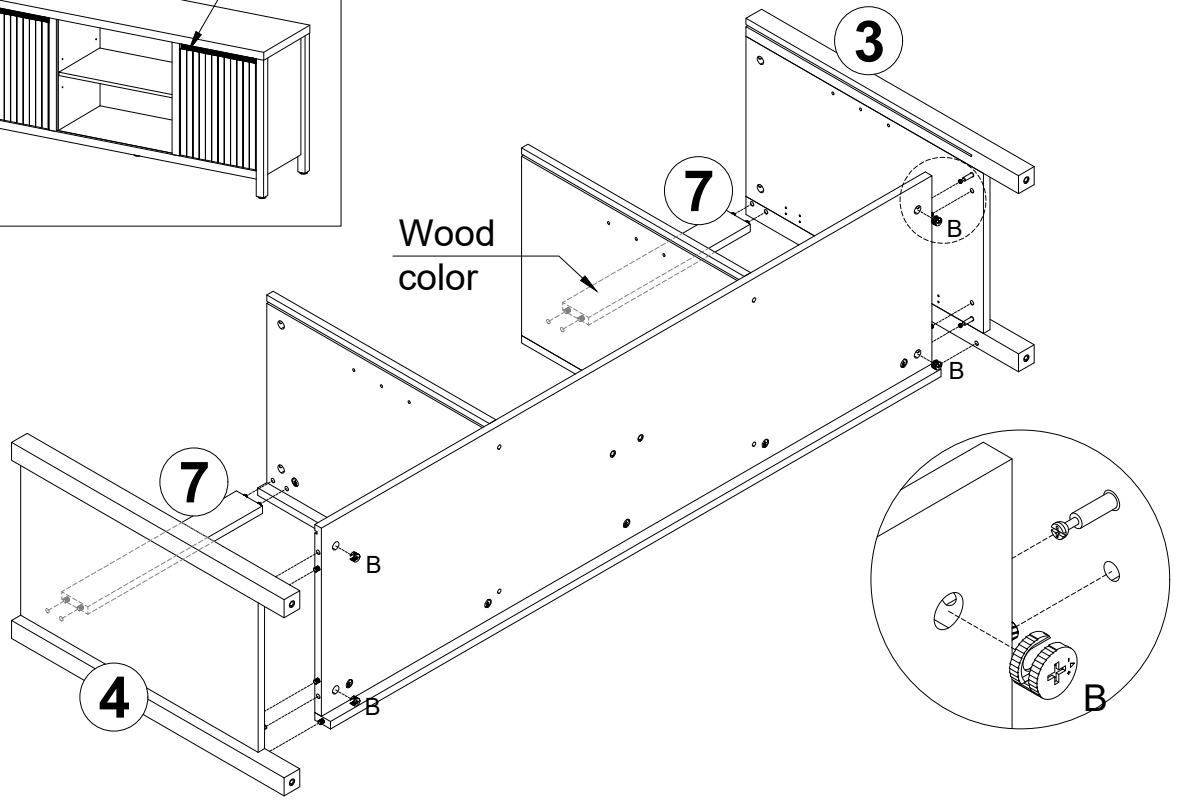
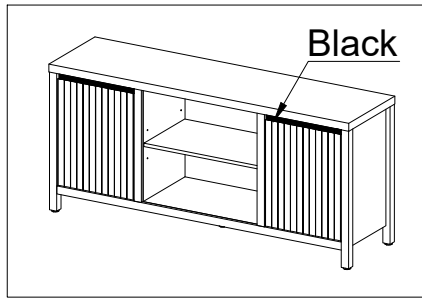


Step 8

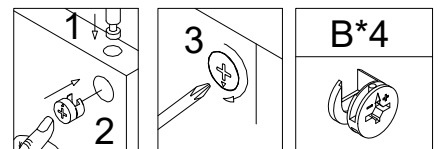
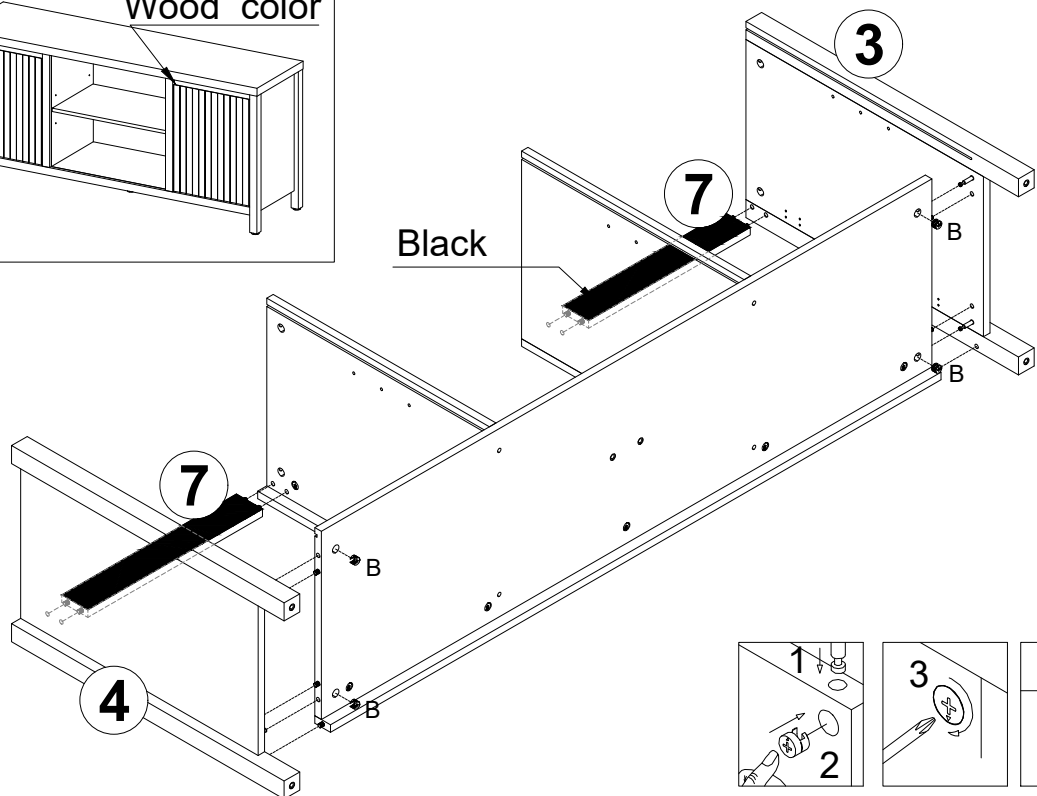
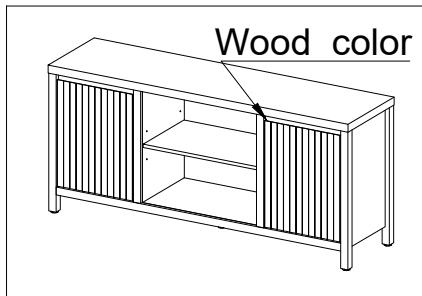


Step 9

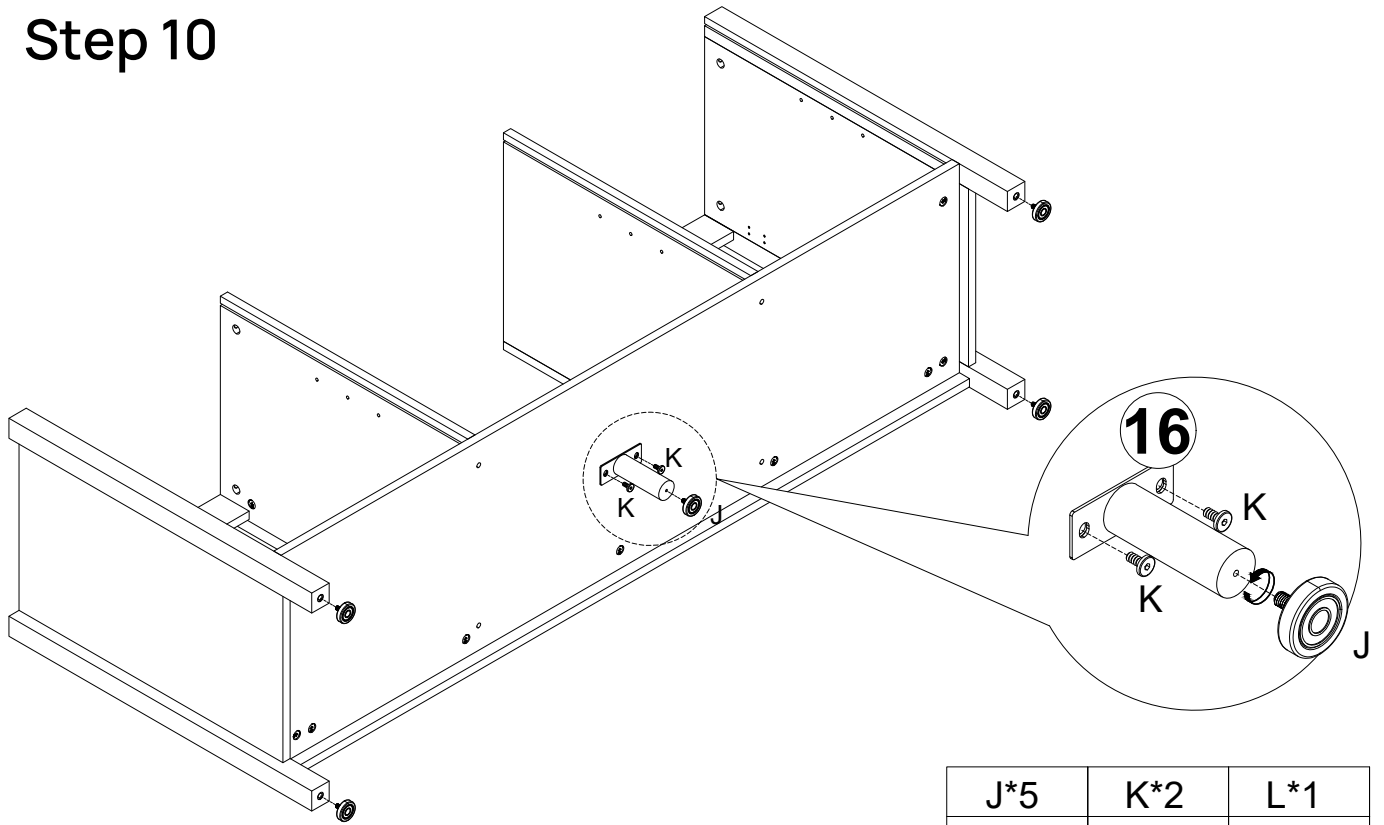
Note: Part **7** can be selected with black or wood color surface.






OR

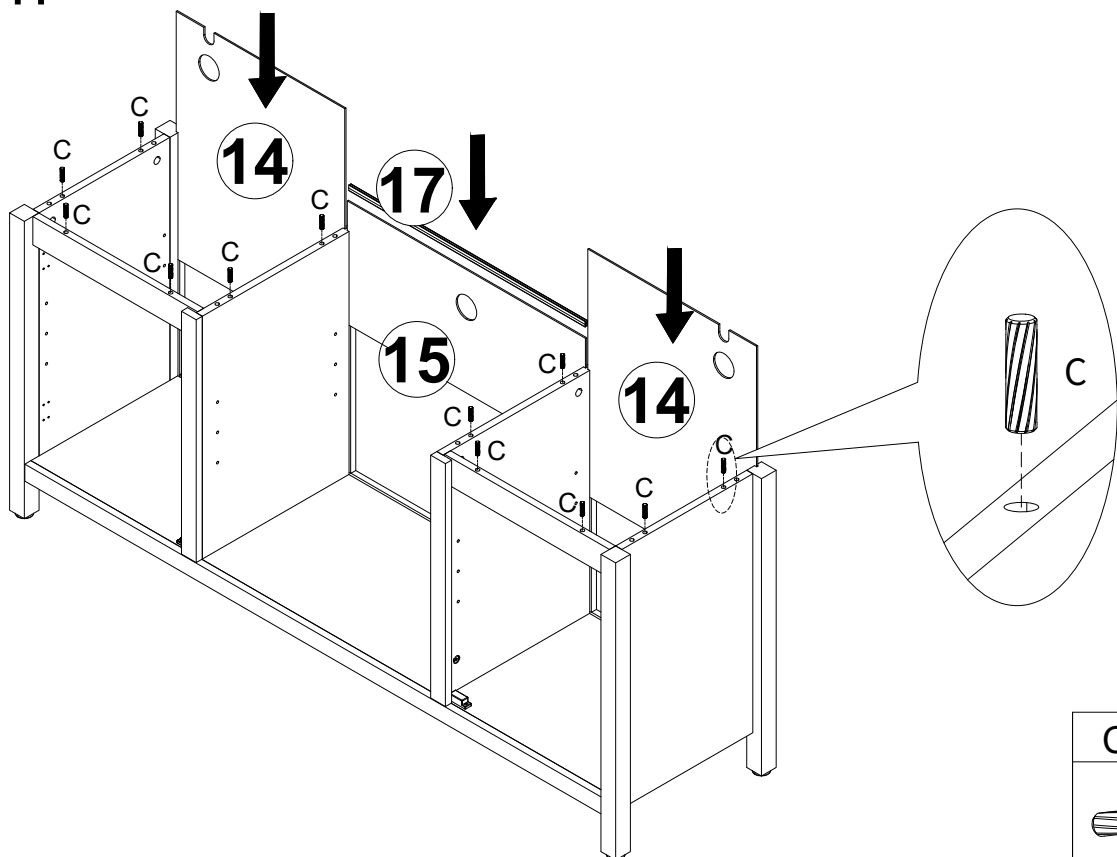



Step 10



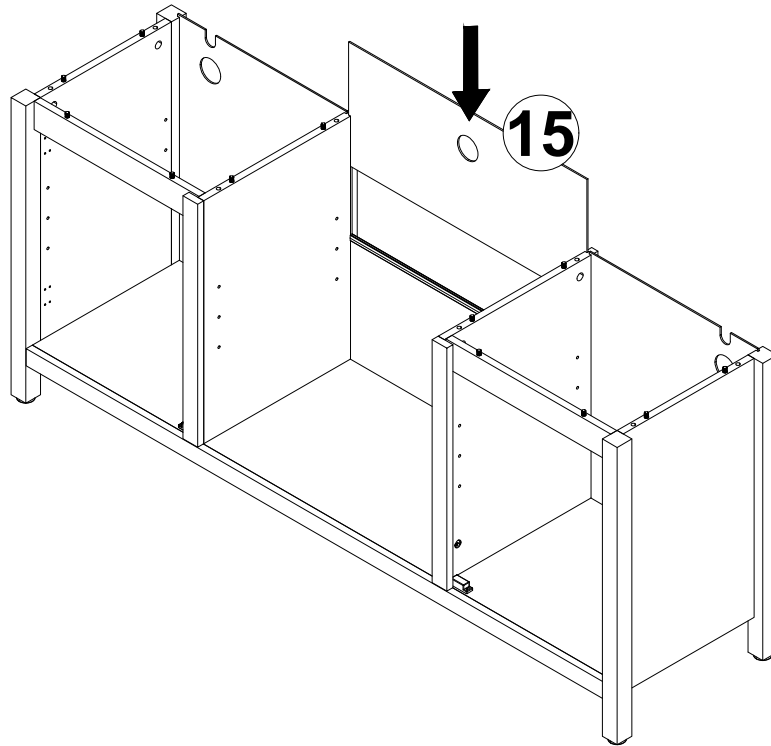
J*5	K*2	L*1
		

Step 11

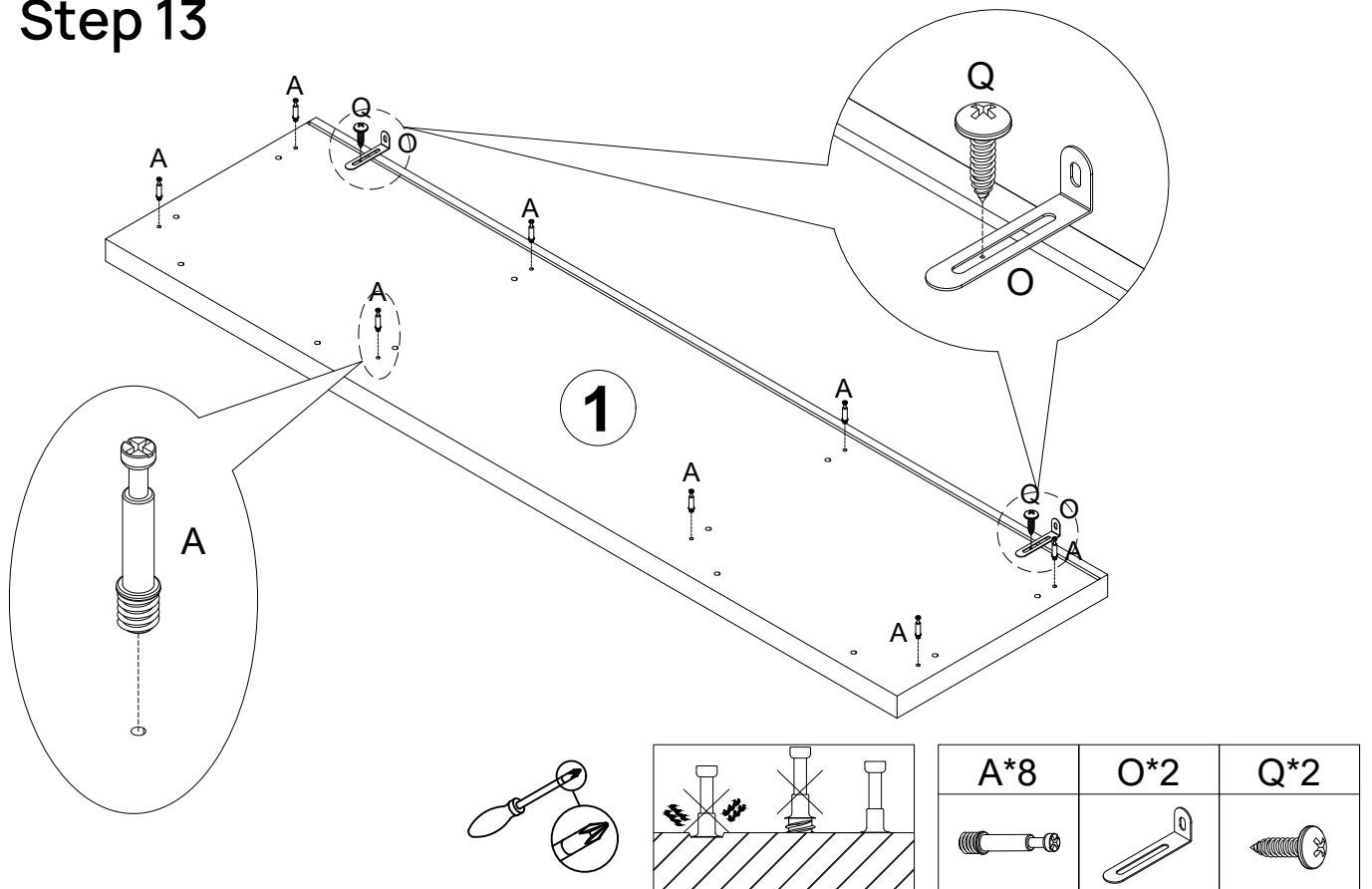


C*12


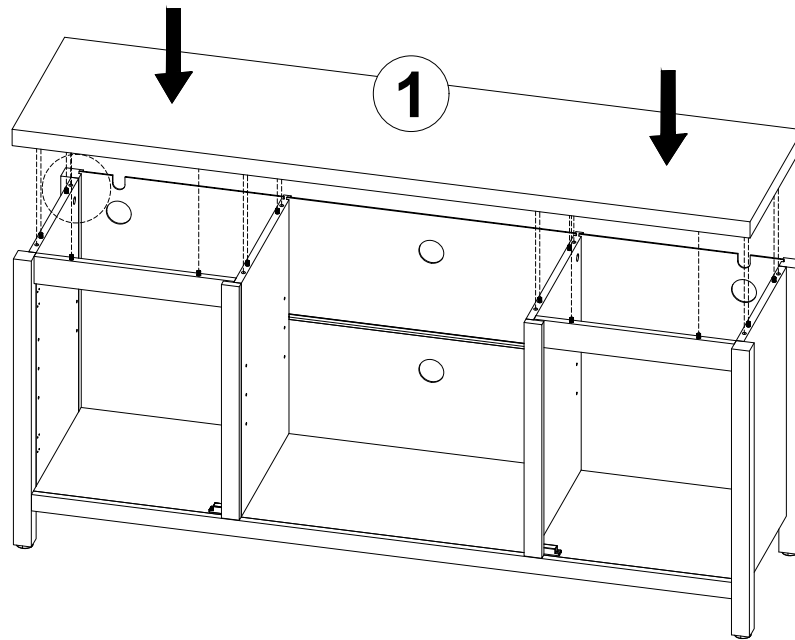
Step 12



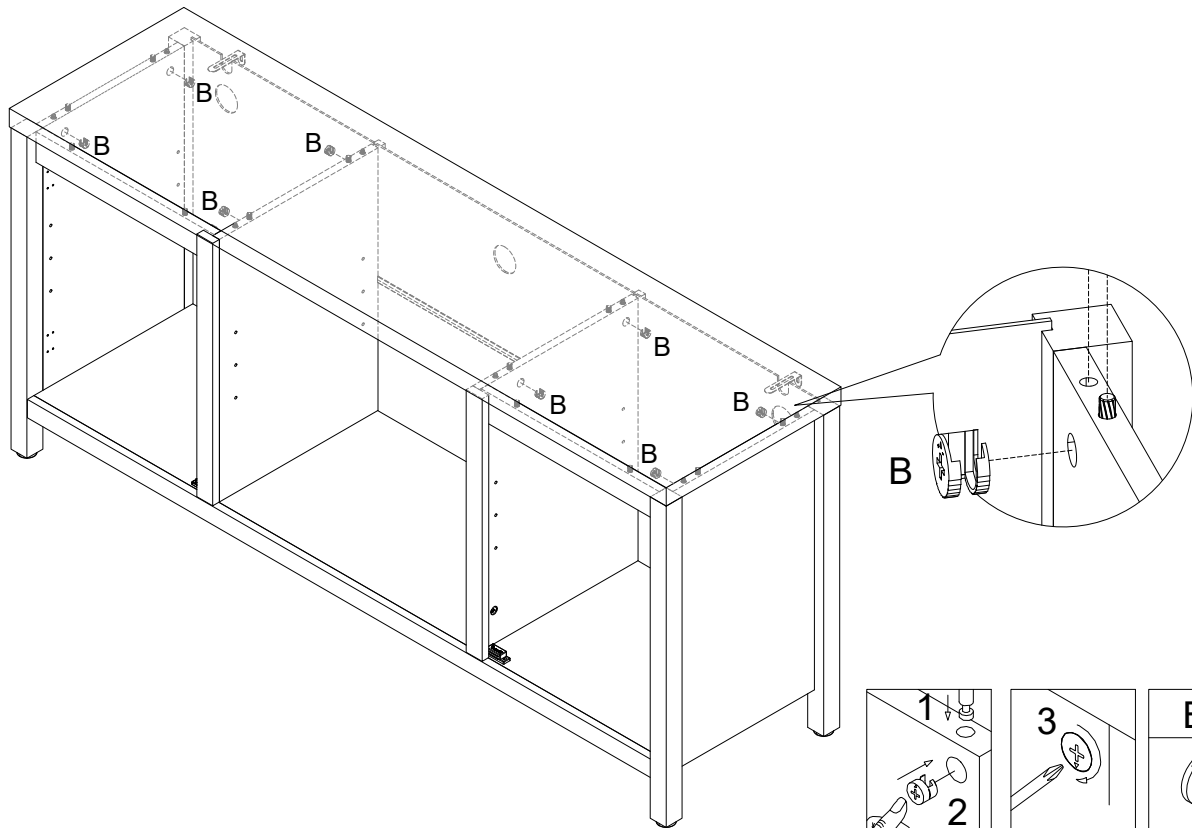
Step 13



Step 14



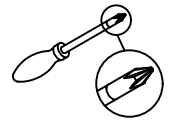
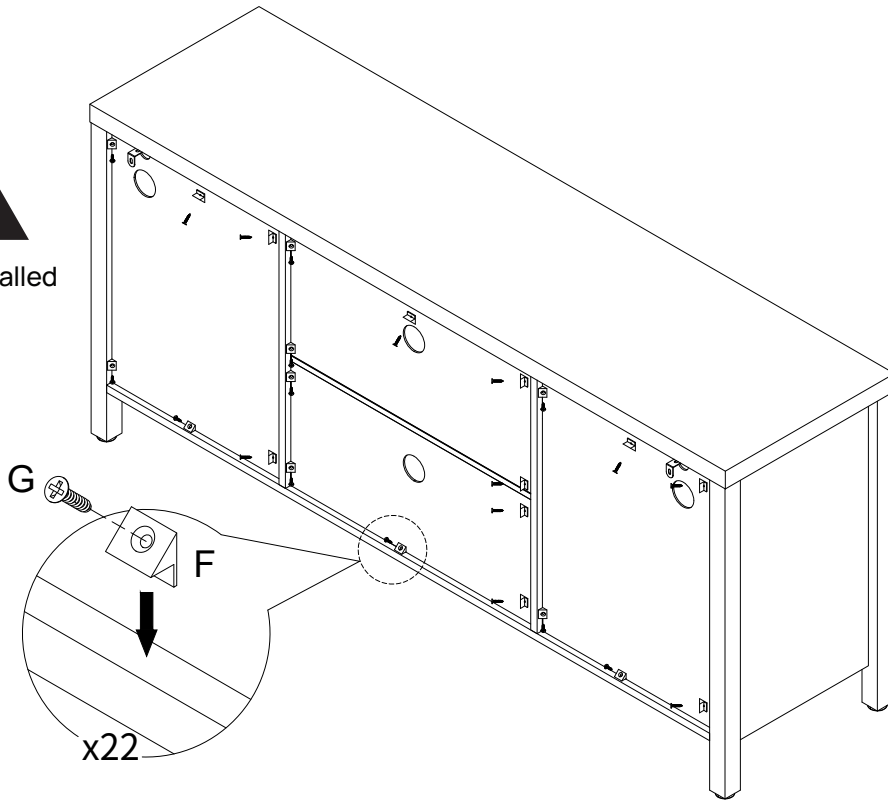
Step 15



Step 16

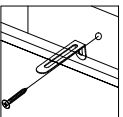
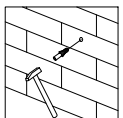
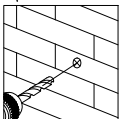
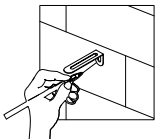


Must Be Installed



F*22	G*22

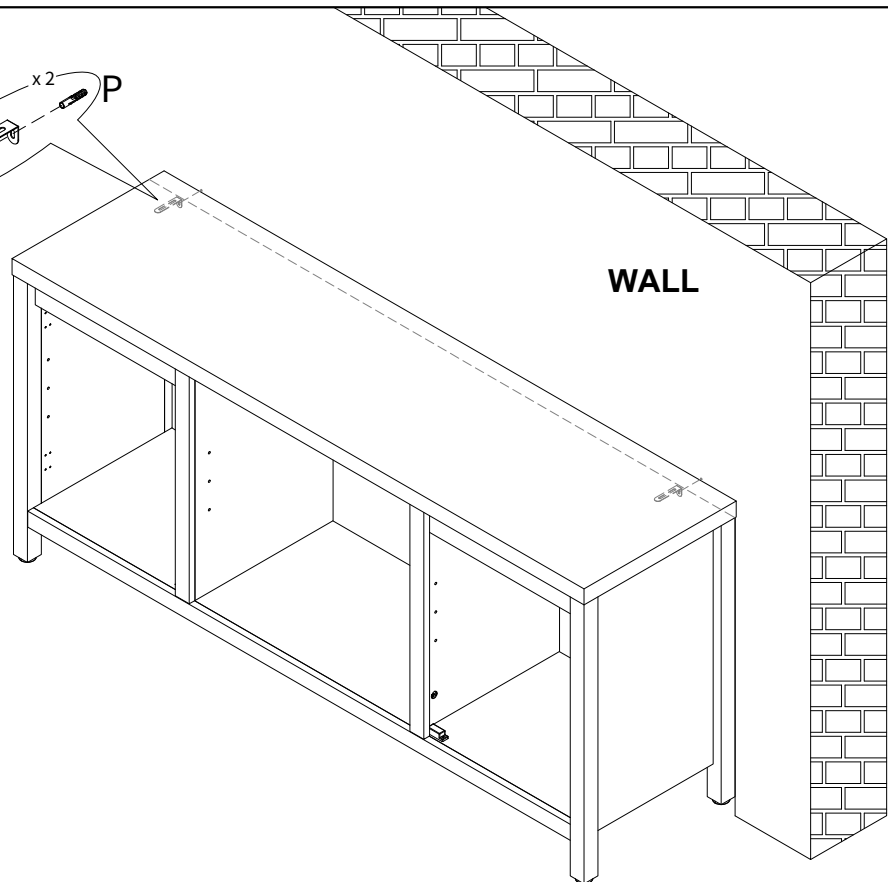
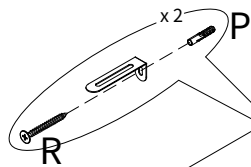
Step 17



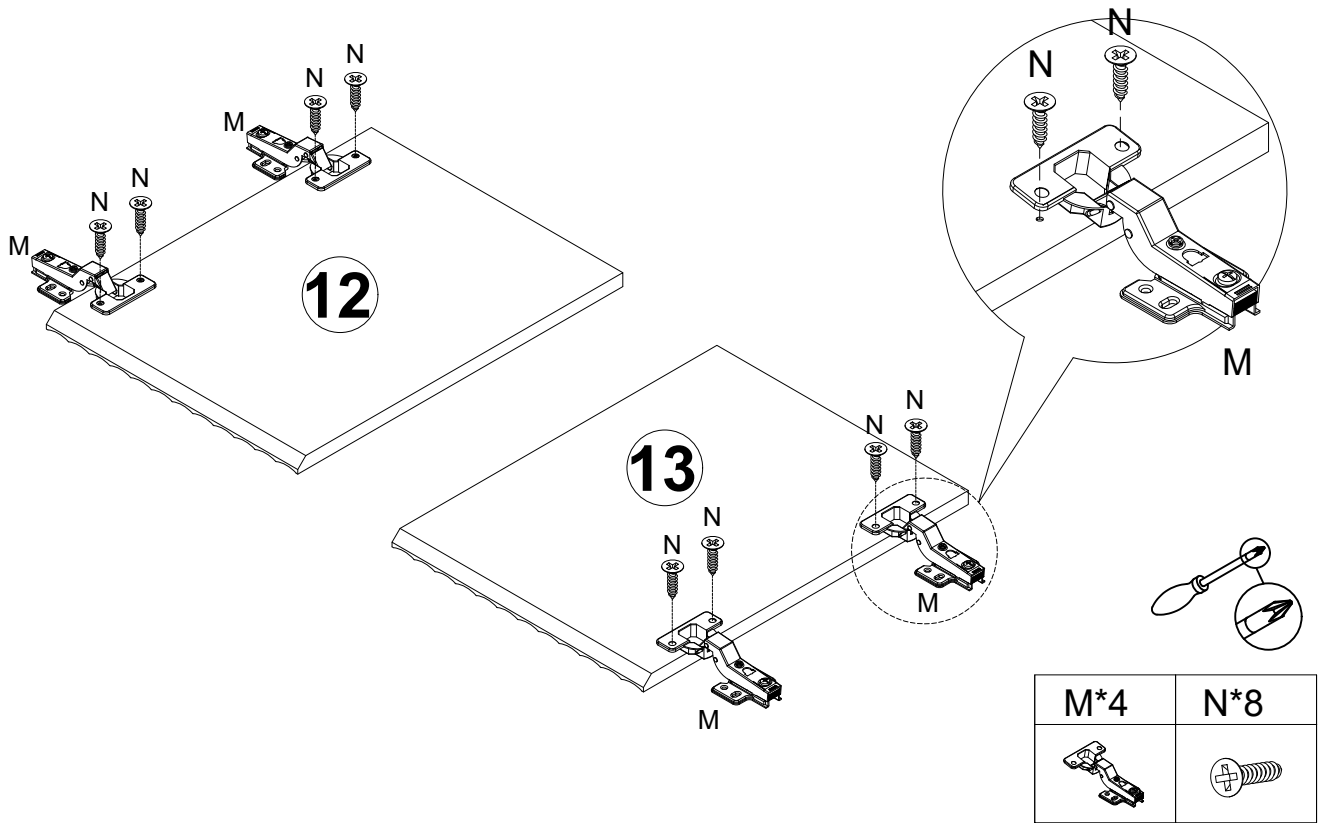
R*2



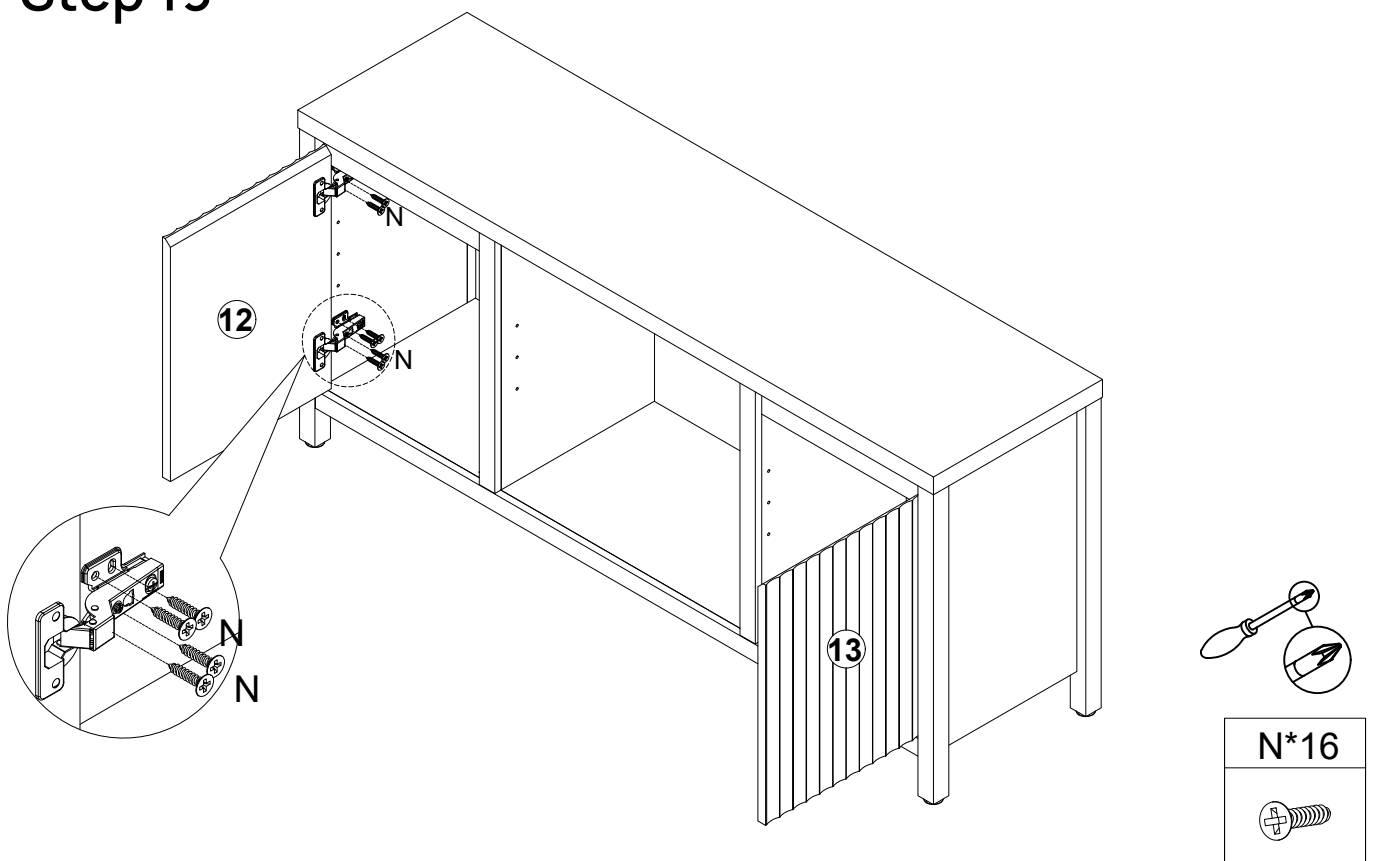
P*2



Step 18



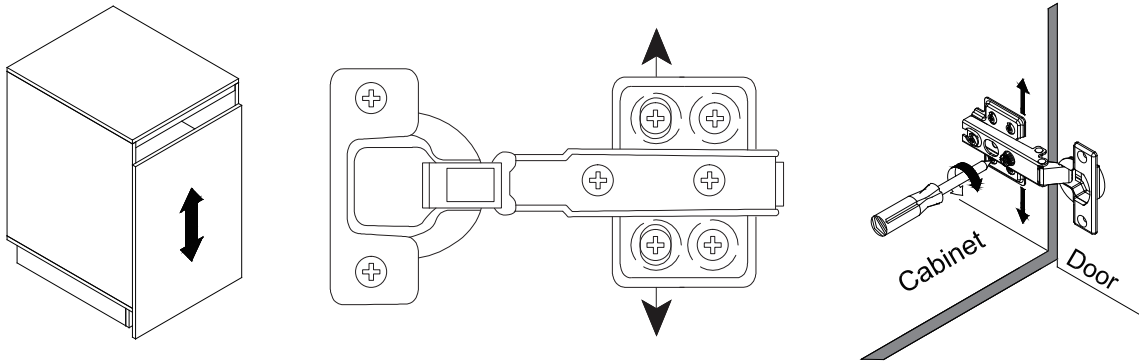
Step 19



Cabinet Door Adjustment Instructions

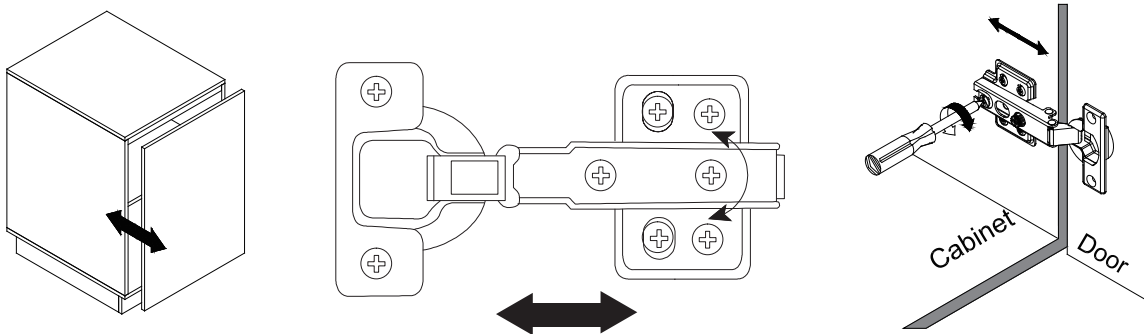
Height adjustment:

- Locate the height adjustment screws on the hinge.
- Use the Phillips screwdriver to either tighten or loosen the screws to raise or lower the cabinet door as desired.

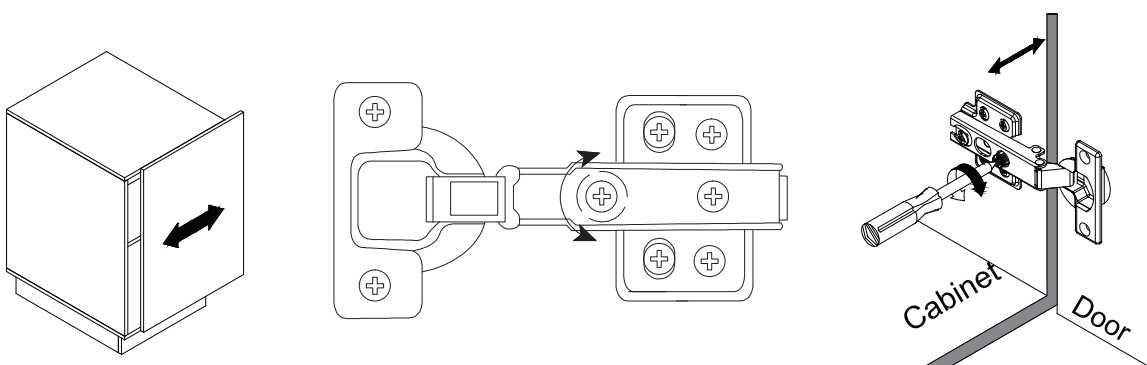


Side-to-side adjustment:

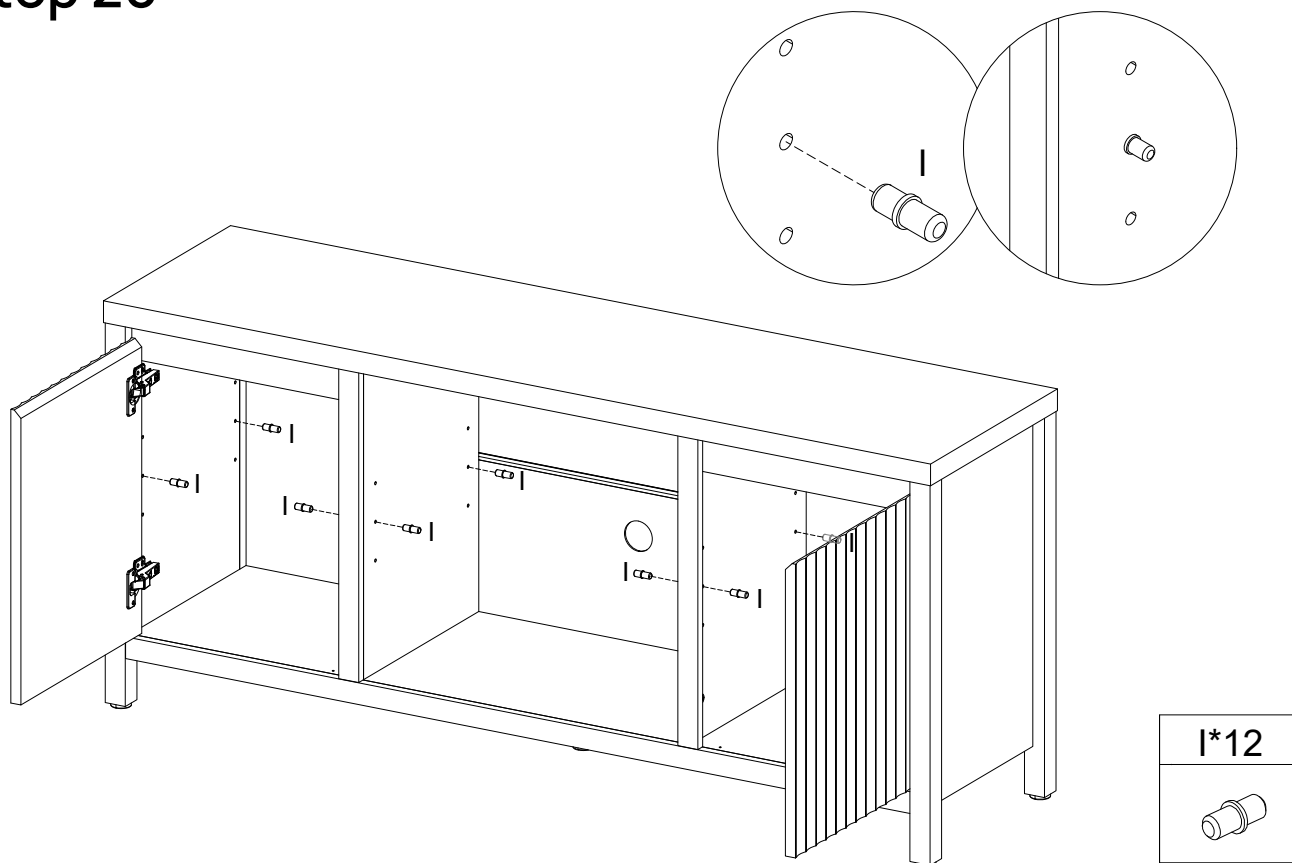
- If the cabinet door needs to be moved closer to or away from the cabinet frame, locate the side-to-side adjustment screws on the hinge.
- Use the Phillips screwdriver to adjust these screws and gradually move the door in the desired direction.



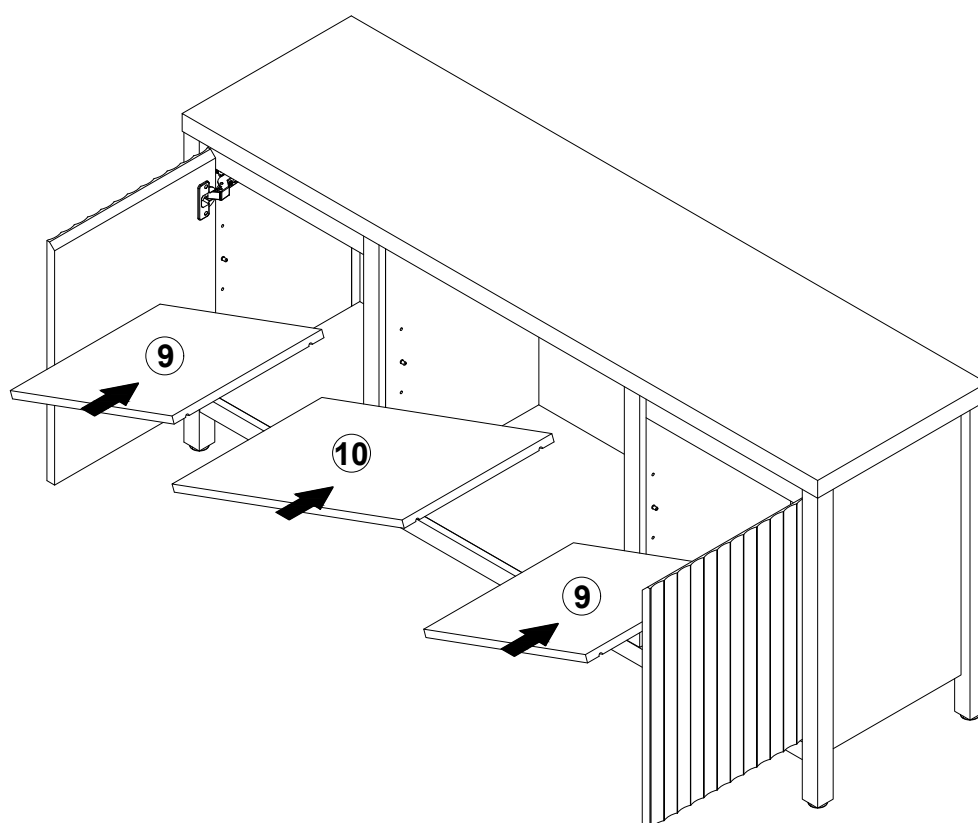
Depth adjustment (if applicable):



Step 20



Step 21



Step 22

