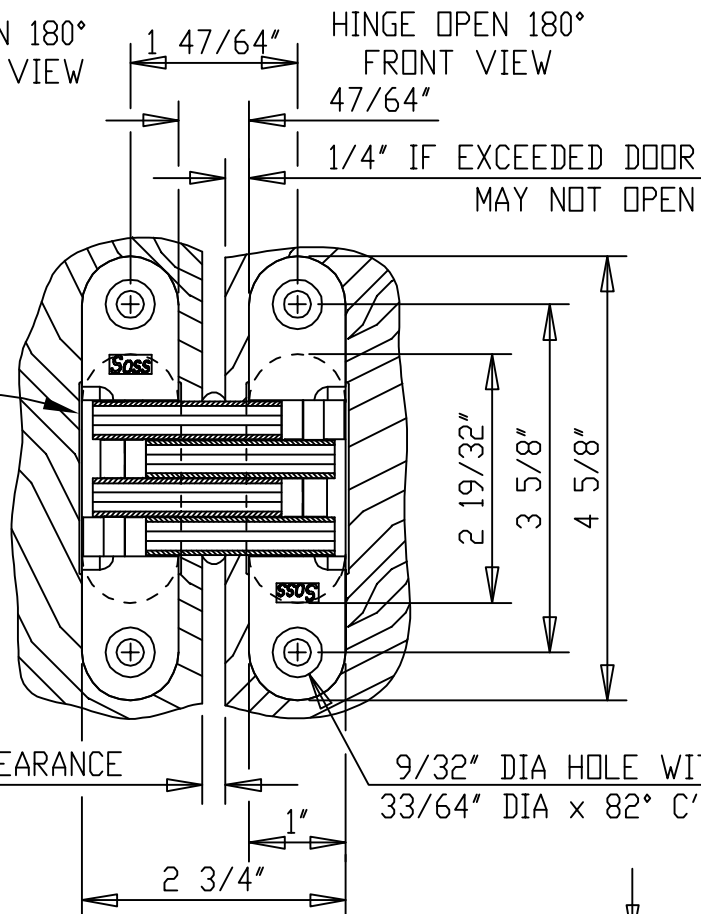
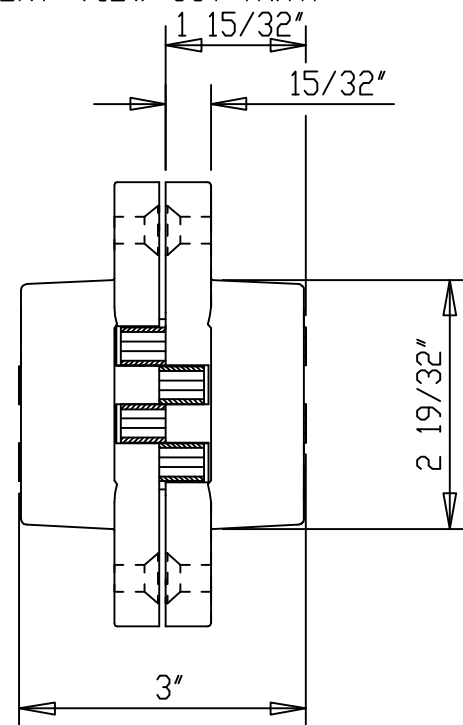


HINGE OPEN 180°
ISOMETRIC VIEW



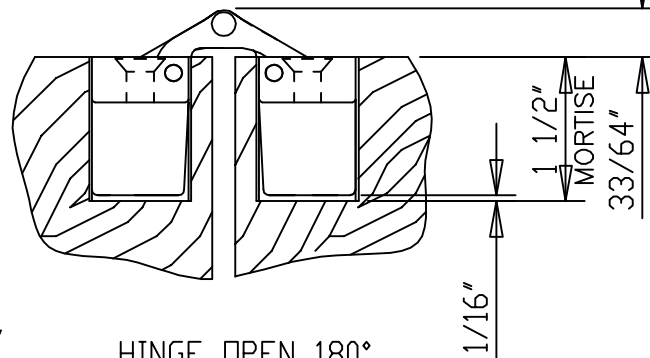
HINGE OPEN 180°
FRONT VIEW

HINGE CLOSED
FRONT VIEW CUT AWAY

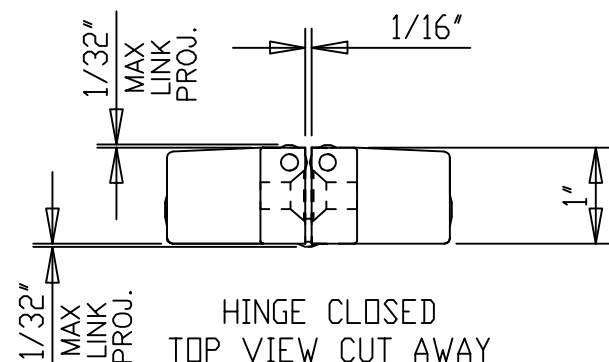


1/32 WIDE X 2 LONG RELIEF
PKT FULL DEPTH, BOTH SIDES,
SIDES, (CENTERED BETWEEN THE
MOUNTING HOLES) IN THE FRAME
AND IN THE DOOR POCKET TO
PROVIDE CLEARANCE FOR HINGE
LINK PLATES, WHEN MORTISING,
AS DRAWN.

SUPPLIED:
WOOD SCREW
#14 x 1-1/2"
SPECIAL ORDER:
MACH. SCREW
1/4-20 x 1"



HINGE OPEN 180°
TOP VIEW CUT AWAY



HINGE CLOSED
TOP VIEW CUT AWAY

MIN. MATERIAL THICKNESS IS 1-3/8"
DO NOT SCALE DRAWING
ALL DIMENSIONS ARE IN INCH
DOOR CLEARANCE REDUCES TO 1/64" WHILE CLOSING
SEE DWG# 4477-C IF ADDING MATERIAL TO DOOR FACE AND/OR FRAME FACE

UIIP

©Copyright
Universal Industrial Products, Inc.
One Coreway Drive
Pioneer, Ohio 43554-0628

SCALE: 1/2 = 1

DRAWN BY: LHH

HINGE TEMPLATE

DATE: 5/01/11

#216 SOSS INVISIBLE HINGE

DRAWING # 216