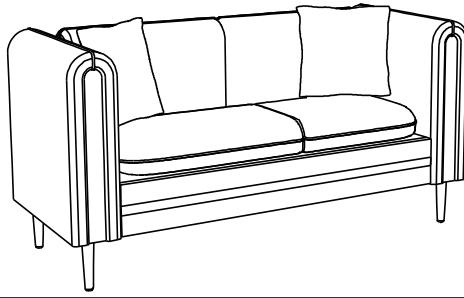


ASSEMBLY INSTRUCTION

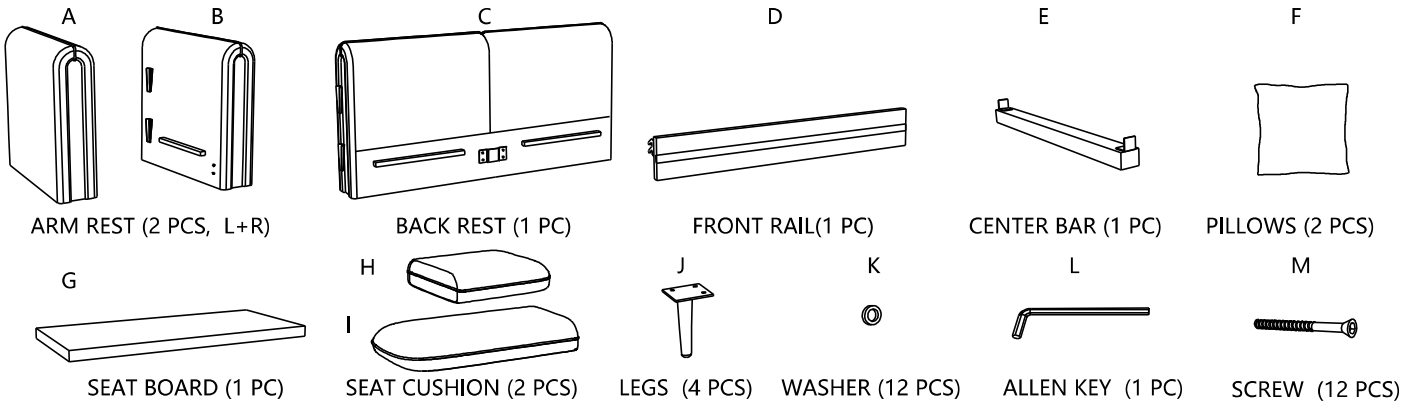


PARTS LIST

All parts are packed in 2 cartons.

Carton 1/2 Content: Part C,D,E,F,G,H,I,J,K,L,M (Part J,K,L,M are packed in the underneath of Part C).

Carton 2/2 Content: Part A and B.



ASSEMBLY

<p>STEP 1</p> <p>Legs and spare parts can be found from underneath of BACK REST (C).</p>	<p>STEP 2</p>	<p>STEP 3 Slightly loose the 4 screws on (A&B) armrest, hook on front rail (D), and tighten all screws.</p>
<p>STEP 4</p>	<p>STEP 5</p>	<p>STEP 6 The Pillows are packed in Vacuum Compressed, please make them loose after taking out of package.</p>