

# Floating Pool Light

## Instructions:

- ☆ Use the air valve to inflate, do not over-inflate  
Automatic charging in sunlight.  
When charged, the LED light comes on automatically in the dark and goes off automatically during the day.
- ☆ Can be folded for storage after deflation.
- ☆ **3 MODE keys:** MODE 1 Flash,  
MODE 2 Breathing pattern, MODE 3 Long illumination light.

## How to use:

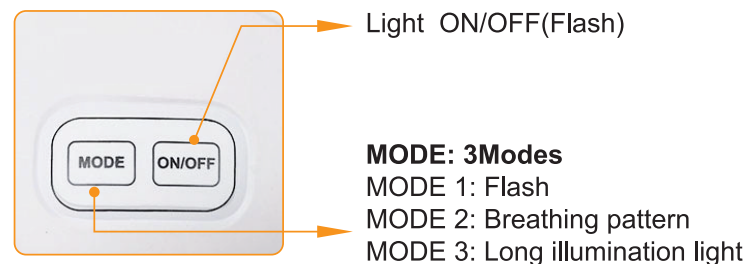
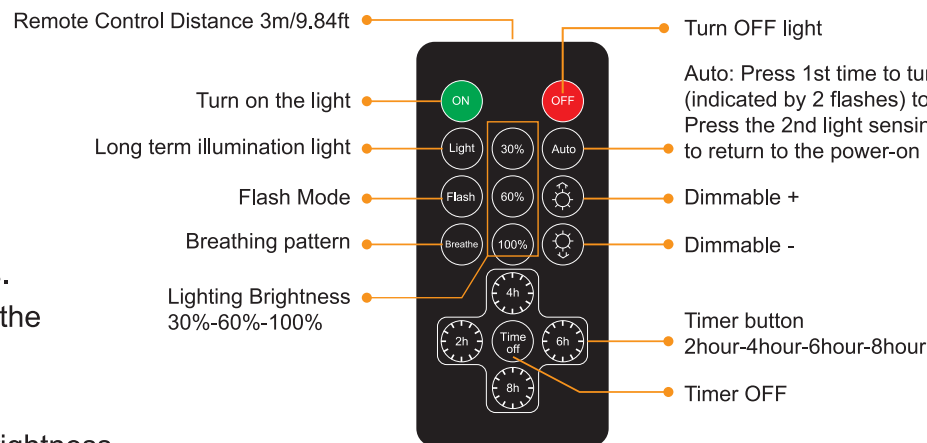
- ☆ For first time use, inflate it and expose it to sunlight for 6-8 hours.  
Then press the button switch, it will automatically charge during the day and light up at night.
- ☆ Fully charged Lighting time 6-8 hours
- ☆ You can use the remote control to set the timer and adjust the brightness.

## Please note:

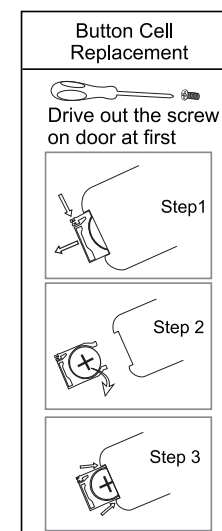
- ☆ For best results: Place in bright sun for 6-8 hours
- ☆ Do not over-inflate to attempt to remove wrinkles, wrinkles fade after one day.
- ☆ In cold weather, you may need to re-inflate the product.

## Remote Control

**Friendly Note:** Remove the insulation tab as illustrated for the first time use.  
For effective remote controlling, switch on with the ON/OFF button at the back of spotlight first.



Note: When fully inflated  
Press the nozzle inside (as shown)



## ⚠ WARNING

- **INGESTION HAZARD:** This product contains a button cell or coin battery.
- **DEATH** or serious injury can occur if ingested.
- A swallowed button cell or coin battery can cause **Internal Chemical Burns** in as little as **2 hours**.
- **KEEP** new and used batteries **OUT OF REACH** of **CHILDREN**
- **Seek immediate medical attention** if a battery is suspected to be swallowed or inserted inside any part of the body.



### Replacing the battery

Turn the remote control to the back.(The black circle is the buckle)

Push the buckle to the right while pulling out the battery cover.

Remove the battery compartment cover away from the remote.

(see diagram below)

Remove the old battery and place a new

Type 3V(CR2025)

Lithium battery into the battery compartment.

Ensure the battery is installed correctly with the

positive(+)side up.

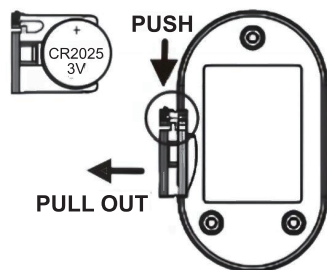
Replace the battery compartment cover.

Dispose or recycle spent/discharged batteries in

compliance with all applicable laws.For detailed

information, contact your local solid waste authority.

Caution: Failure to properly align the battery polarity can cause personal injury and/or property damage.



### Maintenance

- Remove and immediately recycle or dispose of used batteries according to local regulations and keep away from children.  
Do NOT dispose of batteries in household trash or incinerate.
- Even used batteries may cause severe injury or death.
- Call a local poison control center for treatment information.
- Battery type:Coin Cell Battery CR2025.
- Nominal battery voltage:3V.
- Non-rechargeable batteries are not to be recharged.
- Do not force discharge, recharge, disassemble, heat above70°C or incinerate.  
Doing so may result in injury due to venting, leakage or explosion resulting in chemical burns.
- Ensure the batteries are installed correctly according to polarity (+ and -).
- Remove and immediately recycle or dispose of batteries from equipment not used for an extended period of time according to local regulations.
- Always completely secure the battery compartment. If the battery compartment does not close securely, stop using the product, remove the batteries, and keep them away from children.
- Do not mix old and new batteries, different brands or types of batteries, such as alkaline, carbon-zinc, or rechargeable batteries.