

MANUAL

Please read the manual before use.

【Caution】 Please fully charge the battery before using it for the first time.

Product list

■ Light *1 ■ USB Charger Cable *1 ■ Iron Sheet *2

(Notes: The number of iron sheets matches the number of magnets. It may vary depending on the light size.)

Function description

Button type	Function description
C	<ul style="list-style-type: none"> Press button: Cycle through white light, warm light, natural light. Note: Monochrome models do not have this function! Hold button: When the light is on, the brightness can be adjusted by holding the button, and released to lock the brightness. (The brightness level will be memorized.)
A	<ul style="list-style-type: none"> Default: OFF mode Press the button for the first time to enter ON mode. (In ON mode, the sensing function is disabled and the light stays on.) Press the button for the second time to enter Night Sensing mode. (The Night Sensing mode will activate after the light flashes three times.) Press the button for the third time to enter All-Day Sensing mode. (The All-Day Sensing mode will activate after the light flashes twice.) Press the button for the fourth time to turn off the light.

Special Instructions for Sensing Modes

- When set to Night Sensing mode, the light will only turn on when it detects motion and the surrounding environment is dim. Otherwise, it will remain off.
- When set to All-Day Sensing mode, the light will turn on whenever it detects motion, regardless of the ambient light level.

Notes for sensing mode

- The installation position, such as being too low, too high, or if the probe is blocked, will affect the sensing range. It is recommended to mount it facing the side that people pass by to ensure better performance.
- The sensing mode can be blocked by glass.
- The light will automatically turn off approximately 25 seconds after no motion is detected.
- The light will stay on continuously if motion is continuously detected within the sensing range.

Sensing range description



■ The sensing range of the lamp covers an area of 120° and up to 3 meters, with the probe as the center point.
However, improper installation or blocking the sensing probe will affect the sensing sensitivity.

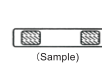
Power usage duration description

- The power consumption varies depending on usage. The longer you use the light each day, the faster the battery will drain. If the power consumption is still high when using the sensing mode less than 8 times a day and with each sensing period shorter than 25 seconds, please contact the seller.
- The brightness will decrease as the power level drops. When the brightness is low, please recharge the light in time.

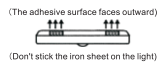
Installation description



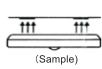
1. Please clean the installation position and keep it dry.



2. Place the iron sheet on the back of the light, aligning it with the position of the built-in magnet.



3. Stick it to the target position.
(Don't stick the iron sheet on the light)



4. After installation, the light will magnetically attach to the iron sheet and can be removed at any time.

Attention

- The iron sheet has two sides: one is metal and the other is adhesive.
- The correct installation method is to stick the adhesive side to the wall or cabinet, and then the light can magnetically attach to the metal side. (Do not stick the adhesive side onto the light!)
- The iron sheet has the same amount of metal as the magnet of the light. The amount of iron may vary depending on the size of the light.

UPGRADED



Charging description

■ Charging voltage: DC5V Red light--charging Green light--fully charged

Charging Precautions:

- Do not use a charging device with an output voltage greater than 5V to charge the light.
- To ensure charging safety and efficiency, please use a mobile phone charging adapter with safety certification to charge the light.
- Do not use the light while charging. (The sensing mode may not work properly while the light is charging.)

Cautions

- Please fully charge the battery before using it for the first time. Otherwise, the light may not work due to circuit protection. (The protection is automatically released after charging.)
- Do not use the light under high temperature or high humidity. This product is not suitable for outdoor use.
- The light source and battery of this product are non-replaceable. After long-term use, if the brightness of the product is very low under full power or the power duration becomes shorter under normal usage, the entire lamp must be replaced.

FAQs

Q: Just received the light, why can't I turn it on?

A: Please fully charge the battery before using it for the first time. Otherwise, the light may not turn on due to circuit protection. (The protection is automatically released after charging.)

Q: Why won't it turn on when detecting a person? Why does it turn on during the daytime? How long will it turn off after detecting a person?

A: Please refer to Page One [Special Instructions for Sensing Mode].

Q: The sensor is not sensitive enough and only works when I walk very close. How wide is the sensing range?

A: The sensing range of the lamp covers 120° and up to 3 meters, with the probe as the center point. However, improper installation or blocking the sensing probe will affect the sensing performance.

Please refer to Page One [Notes for Sensing Mode].

Q: Power usage duration problem?

A: The power consumption varies depending on usage. The longer you use the light each day, the faster the battery will drain. If the power consumption is still high when using the sensing mode less than 8 times a day and with each sensing period shorter than 25 seconds, please contact the seller.

Please contact the seller if the manual can not solve your problem, thank you for your choice and trust.

正面

User Guide

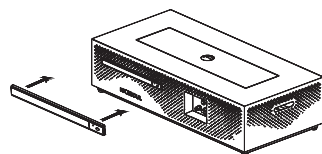
This lamp can be used independently or together with our fire pit, adding flexible and atmospheric lighting to both indoor and outdoor spaces.

1. Using with Fire Pit

If you have purchased our fire pit, the lamp can be magnetically attached to any part of it — inner wall, outer wall, or top surface — thanks to the fire pit's iron structure

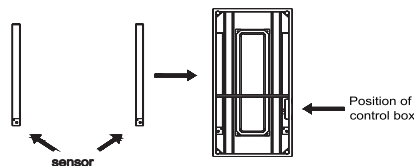
Outside Use:

Attach the lamp to any outer area of the fire pit. It stays securely in place and adds a warm, inviting glow.



Inside Use:

Mount the lamp on the inner wall or top, with sensors facing the control box side. Keep sensors near the handle opening for better remote signal reception.

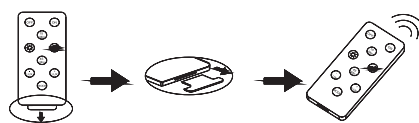


反面

2. Remote Connection & Operation

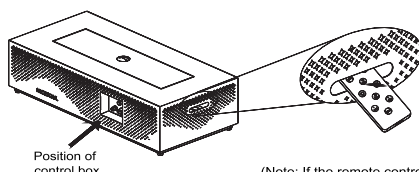
Before First Use:

Remove the insulation tab on the back of the remote to activate the power.



How to Operate:

Aim the remote toward the lamp's sensor when operating. If the lamp is placed inside the fire pit, you can insert the remote through the handle opening near the control box for control.



Tip:

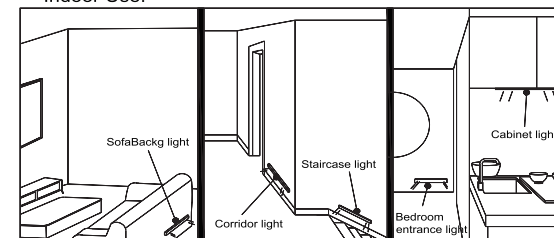
If the remote response seems weak, try adjusting the angle or distance, and make sure there are no obstructions between the remote and the lamp sensor.

(Note: If the remote control does not respond immediately after pressing once, please try pressing it two more times.)

3. Multi-Scene Applications

With the included metal plate accessories, the lamp can be installed flexibly in a variety of spaces to meet lighting and decorative needs.

Indoor Use:



Attach under or behind a sofa for gentle ambient light during movie nights or relaxation.

Mount along hallways, staircases, or bedroom entrances to serve as a soft night guide light for safety and convenience.

Fix to metal furniture edges or storage cabinets for accent or task lighting.

Outdoor Use:

Magnetically attach to balcony railings, porch frames, or garden iron structures to create a cozy, inviting atmosphere for gatherings.

Pair with the fire pit lighting for layered illumination and a warm outdoor experience.

Recommendation:

To extend the lamp's lifespan, avoid direct rain or strong sunlight during outdoor use.

When not in use for long periods, store the lamp in a dry place.

展开240*105mm 折后成品40*105mm 1000份