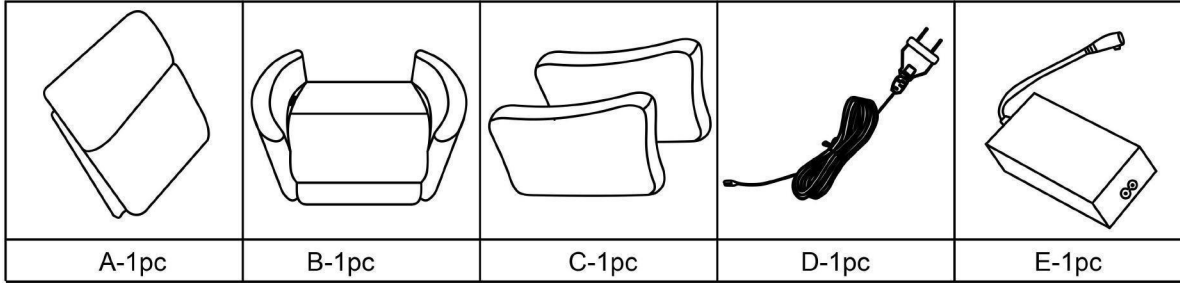
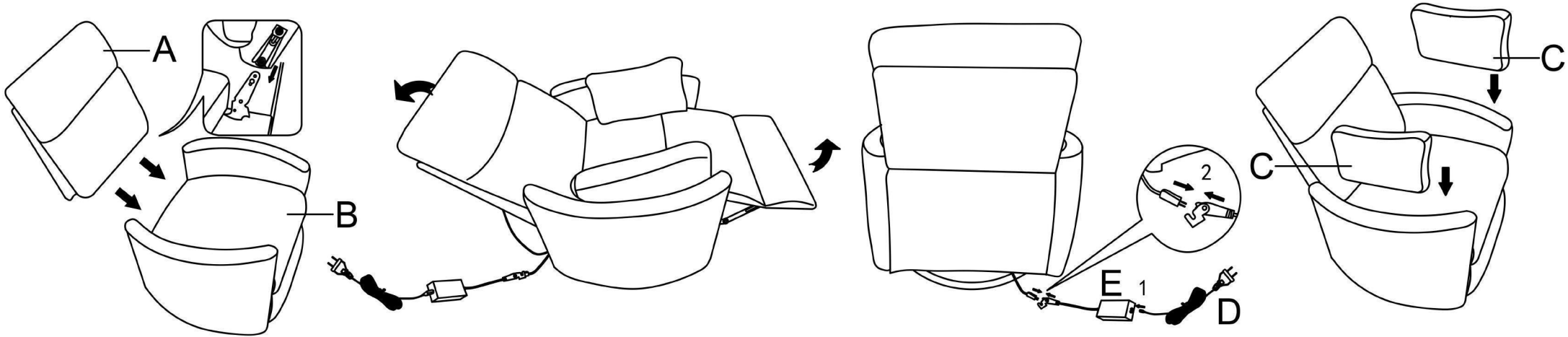


Power Recliner Chair



THIS INSTRUCTION BOOKLET CONTAINS IMPORTANT SAFETY INFORMATION. PLEASE READ AND KEEP FOR



Warm tips:

1. Please check if the wire is connected correctly, do not press the wire under the lift chair base to avoid wear and tear.
2. You can untie the semi-transparent white bundling strap to extend the length of the wire.
3. Do not forcefully pull the wire connection point to avoid poor contact and short circuit.



STRICTLY PROHIBIT

Note: Please arrange the wires in order when using the product, do not cross the wires to avoid the wires being pinched off when using of lift function.



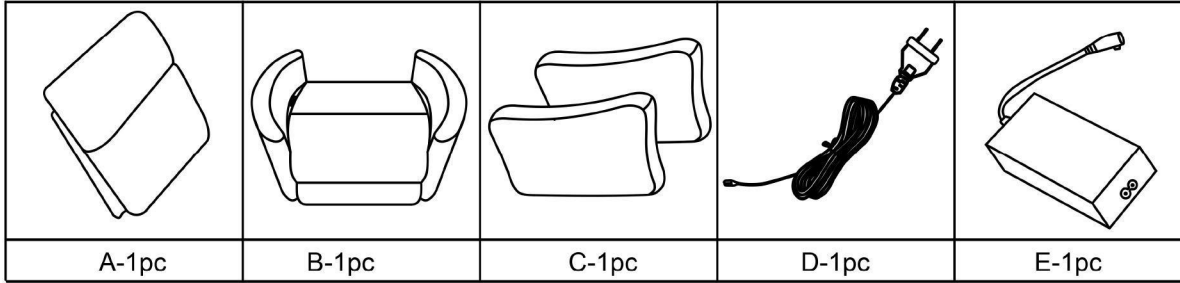
About your furniture piece:

- Fabric will fade or discolor in direct sunlight. Minimize exposure to direct sunlight to extend the life of your furniture.
- Wood grain, knots, streaks, and color variation occur naturally in wood and are not considered defects.
- Dust often and use a vacuum cleaner crevice tool to clean seams. To maintain the fabric appearance, gently clean soiled areas.
- Softening of foam is natural and will happen over time with use.
- Assemble on a soft surface to prevent scratching the finish.
- Carefully remove all of the components from the packaging and set aside for assembly.

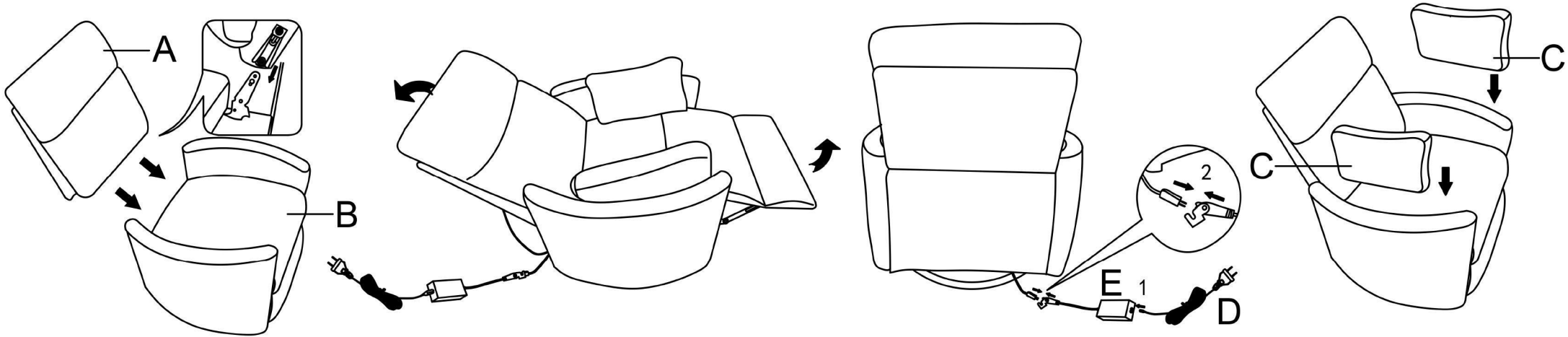
FAQ

Type of common problem	Common problem	Possible cause	Solution
Installation	The backrest and the base of the clasp can not be aligned	The position of the base/backrest clasp is shifted during transportation	Tighten the clips until they align with the base/backrest clips
	The backrest is unstable after the product is installed	The alignment is loose during the installation.	Reinstall and check that the connection is stable
	Missing parts	Leakage	Please contact us to arrange new parts for you to reissue
Appearance	Backrest / armrest is not fluffy enough	Internal cotton was squeezed together during transportation	Spread the cotton by tapping the problem area to make it fluffy
	The gap between the backrest and the base is large	Internal cotton was crushed together during transport	Spread the cotton by tapping the bottom of the backrest to make it fluffy and reduce the gap
	The gap between the base and armrest is large	Internal cotton was squeezed together during transportation	By patting the armrests to spread the cotton to make it fluffy and reduce the gap
	Product surface leather has indentation	Indentation caused by squeezing during transportation	Gently blow the indentation with a hair dryer and smooth it out with your hands
Function	Product reclining process stuck / does not work	Wires are not connected	Check whether the plug is well connected
		Damaged wire	If the wire is damaged, please contact us to send you a new wire
		Temporary short circuit inside the product	Remote control landing at the same time to the base pressure to make it fall to resume operation

Power Recliner Chair



Este manual contiene información importante sobre seguridad. Por favor, léalo y guárdelo



Consejos útiles:

1. Por favor, revise si los cables están conectados correctamente y no los presione debajo de la base de la silla para evitar desgaste.
2. Puede desatar las bridas blancas semitransparentes para alargar la longitud de los cables.
3. Evite tirar de manera forzada de los puntos de conexión de los cables para evitar malos contactos y cortocircuitos.



STRICTLY PROHIBIT

Note: Please arrange the wires in order when using the product, do not cross the wires to avoid the wires being pinched off when using of lift function.



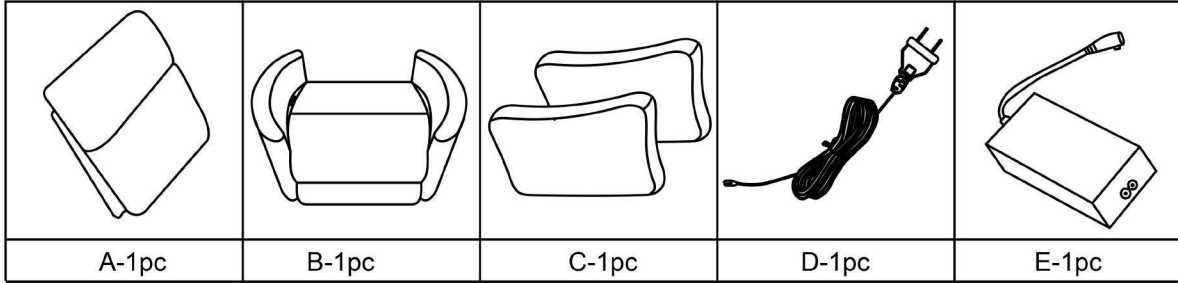
About your furniture piece:

- Fabric will fade or discolor in direct sunlight. Minimize exposure to direct sunlight to extend the life of your furniture.
- Wood grain, knots, streaks, and color variation occur naturally in wood and are not considered defects.
- Dust often and use a vacuum cleaner crevice tool to clean seams. To maintain the fabric appearance, gently clean soiled areas.
- Softening of foam is natural and will happen over time with use.
- Assemble on a soft surface to prevent scratching the finish.
- Carefully remove all of the components from the packaging and set aside for assembly.

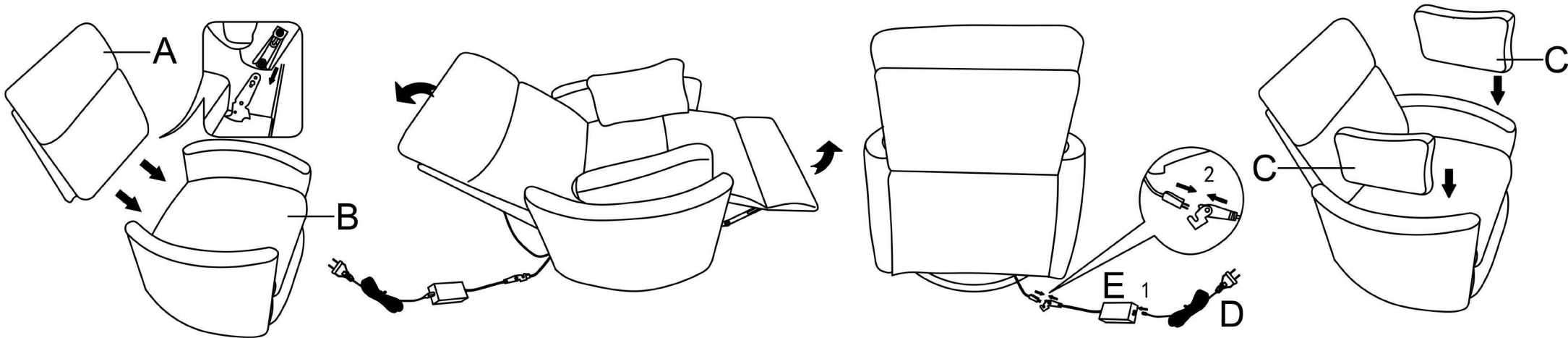
FAQ

Type of common problem	Common problem	Possible cause	Solution
Installation	The backrest and the base of the clasp can not be aligned	The position of the base/backrest clasp is shifted during transportation	Tighten the clips until they align with the base/backrest clips
	The backrest is unstable after the product is installed	The alignment is loose during the installation.	Reinstall and check that the connection is stable
	Missing parts	Leakage	Please contact us to arrange new parts for you to reissue
Appearance	Backrest / armrest is not fluffy enough	Internal cotton was squeezed together during transportation	Spread the cotton by tapping the problem area to make it fluffy
	The gap between the backrest and the base is large	Internal cotton was crushed together during transport	Spread the cotton by tapping the bottom of the backrest to make it fluffy and reduce the gap
	The gap between the base and armrest is large	Internal cotton was squeezed together during transportation	By patting the armrests to spread the cotton to make it fluffy and reduce the gap
	Product surface leather has indentation	Indentation caused by squeezing during transportation	Gently blow the indentation with a hair dryer and smooth it out with your hands
Function	Product reclining process stuck / does not work	Wires are not connected	Check whether the plug is well connected
		Damaged wire	If the wire is damaged, please contact us to send you a new wire
		Temporary short circuit inside the product	Remote control landing at the same time to the base pressure to make it fall to resume operation

Power Recliner Chair



Ce manuel contient des informations importantes sur la sécurité. Veuillez le lire et



Conseils chaleureux:

1. Por favor, revise si los cables están conectados correctamente, no los presione debajo de la base del asiento elevador para evitar desgaste.
2. Puede desatar las bridas blancas semitransparentes para alargar la longitud de los cables.
3. No fuerce los puntos de conexión de los cables para evitar malos contactos y cortocircuitos.



STRICTLY PROHIBIT

Note: Please arrange the wires in order when using the product, do not cross the wires to avoid the wires being pinched off when using of lift function.



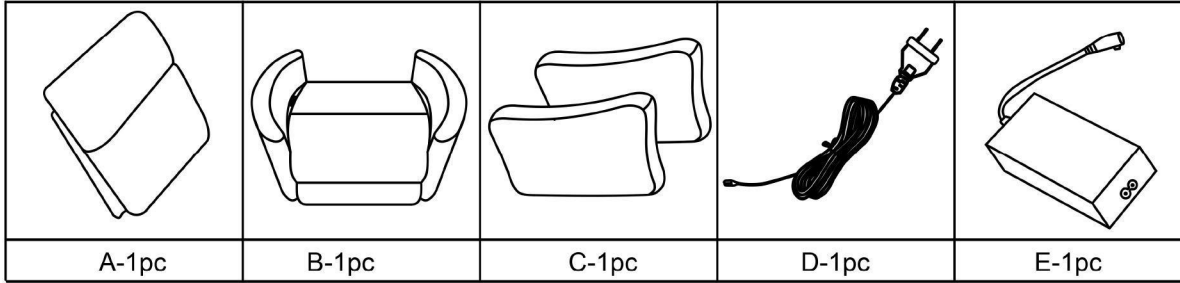
About your furniture piece:

- Fabric will fade or discolor in direct sunlight. Minimize exposure to direct sunlight to extend the life of your furniture.
- Wood grain, knots, streaks, and color variation occur naturally in wood and are not considered defects.
- Dust often and use a vacuum cleaner crevice tool to clean seams. To maintain the fabric appearance, gently clean soiled areas.
- Softening of foam is natural and will happen over time with use.
- Assemble on a soft surface to prevent scratching the finish.
- Carefully remove all of the components from the packaging and set aside for assembly.

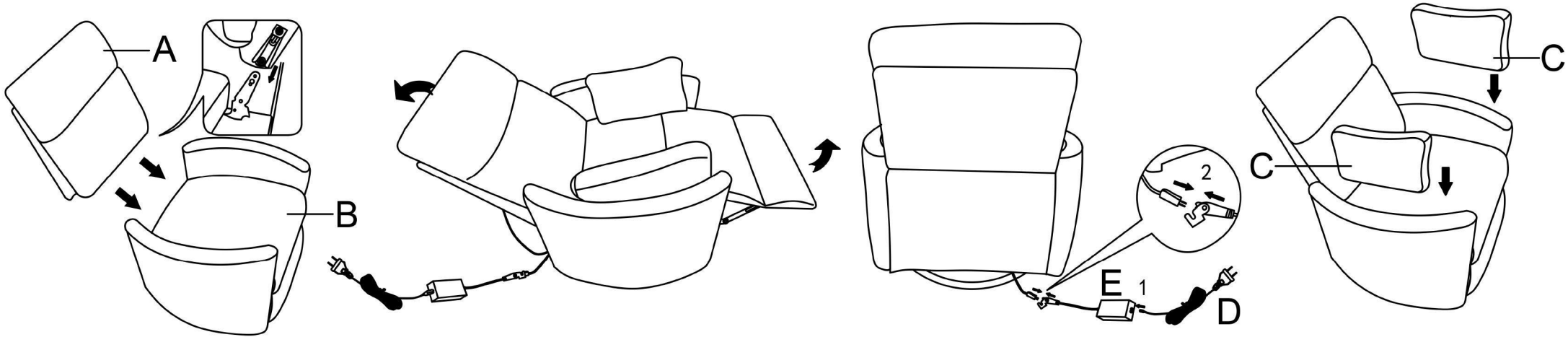
FAQ

Type of common problem	Common problem	Possible cause	Solution
Installation	The backrest and the base of the clasp can not be aligned	The position of the base/backrest clasp is shifted during transportation	Tighten the clips until they align with the base/backrest clips
	The backrest is unstable after the product is installed	The alignment is loose during the installation.	Reinstall and check that the connection is stable
	Missing parts	Leakage	Please contact us to arrange new parts for you to reissue
Appearance	Backrest / armrest is not fluffy enough	Internal cotton was squeezed together during transportation	Spread the cotton by tapping the problem area to make it fluffy
	The gap between the backrest and the base is large	Internal cotton was crushed together during transport	Spread the cotton by tapping the bottom of the backrest to make it fluffy and reduce the gap
	The gap between the base and armrest is large	Internal cotton was squeezed together during transportation	By patting the armrests to spread the cotton to make it fluffy and reduce the gap
	Product surface leather has indentation	Indentation caused by squeezing during transportation	Gently blow the indentation with a hair dryer and smooth it out with your hands
Function	Product reclining process stuck / does not work	Wires are not connected	Check whether the plug is well connected
		Damaged wire	If the wire is damaged, please contact us to send you a new wire
		Temporary short circuit inside the product	Remote control landing at the same time to the base pressure to make it fall to resume operation

Power Recliner Chair



Il manuale contiene importanti informazioni di sicurezza.



Suggerimenti utili:

1. Por favor, verifique si los cables están conectados correctamente y no los presione debajo de la base del asiento elevador para evitar desgaste.
2. Puede desatar las ataduras blancas semitransparentes para alargar la longitud de los cables.
3. No fuerce los puntos de conexión de los cables para evitar malos contactos y cortocircuitos.



STRICTLY PROHIBIT

Note: Please arrange the wires in order when using the product, do not cross the wires to avoid the wires being pinched off when using of lift function.



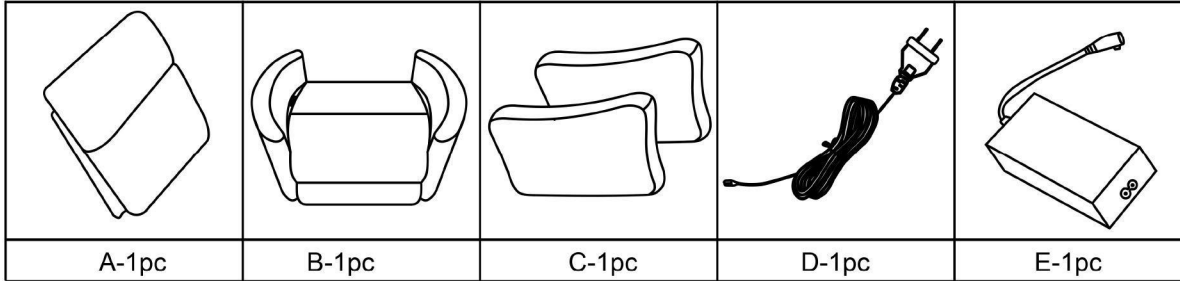
About your furniture piece:

- Fabric will fade or discolor in direct sunlight. Minimize exposure to direct sunlight to extend the life of your furniture.
- Wood grain, knots, streaks, and color variation occur naturally in wood and are not considered defects.
- Dust often and use a vacuum cleaner crevice tool to clean seams. To maintain the fabric appearance, gently clean soiled areas.
- Softening of foam is natural and will happen over time with use.
- Assemble on a soft surface to prevent scratching the finish.
- Carefully remove all of the components from the packaging and set aside for assembly.

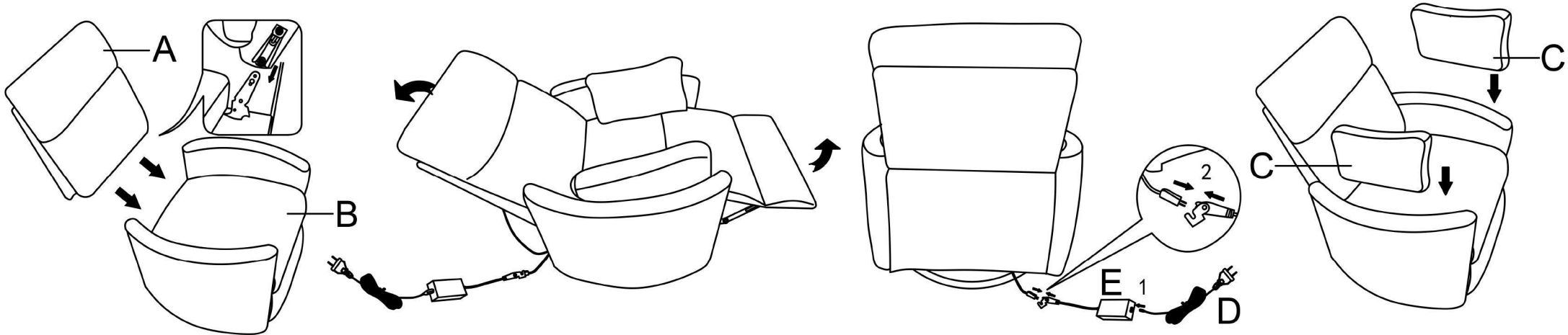
FAQ

Type of common problem	Common problem	Possible cause	Solution
Installation	The backrest and the base of the clasp can not be aligned	The position of the base/backrest clasp is shifted during transportation	Tighten the clips until they align with the base/backrest clips
	The backrest is unstable after the product is installed	The alignment is loose during the installation.	Reinstall and check that the connection is stable
	Missing parts	Leakage	Please contact us to arrange new parts for you to reissue
Appearance	Backrest / armrest is not fluffy enough	Internal cotton was squeezed together during transportation	Spread the cotton by tapping the problem area to make it fluffy
	The gap between the backrest and the base is large	Internal cotton was crushed together during transport	Spread the cotton by tapping the bottom of the backrest to make it fluffy and reduce the gap
	The gap between the base and armrest is large	Internal cotton was squeezed together during transportation	By patting the armrests to spread the cotton to make it fluffy and reduce the gap
	Product surface leather has indentation	Indentation caused by squeezing during transportation	Gently blow the indentation with a hair dryer and smooth it out with your hands
Function	Product reclining process stuck / does not work	Wires are not connected	Check whether the plug is well connected
		Damaged wire	If the wire is damaged, please contact us to send you a new wire
		Temporary short circuit inside the product	Remote control landing at the same time to the base pressure to make it fall to resume operation

Power Recliner Chair



Dieses Handbuch enthält wichtige Sicherheitsinformationen.
Bitte lesen Sie es durch und bewahren Sie es zur zukünftigen Re



Warme Tipps:

1. Bitte überprüfen Sie, ob die Kabel korrekt angeschlossen sind, und drücken Sie die Kabel nicht unter den Sitz des Aufzugs, um Abnutzung zu vermeiden.
2. Sie können die halbdurchsichtigen weißen Bänder lösen, um die Länge des Kabels zu verlängern.
3. Ziehen Sie nicht gewaltsam an den Verbindungspunkten der Kabel, um schlechten Kontakt und Kurzschlüsse zu vermeiden.



STRICTLY PROHIBIT

Note: Please arrange the wires in order when using the product, do not cross the wires to avoid the wires being pinched off when using of lift function.



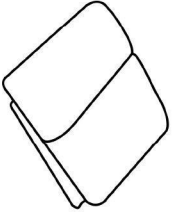
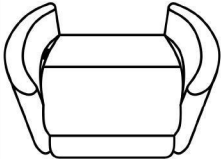
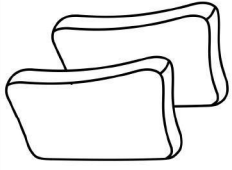

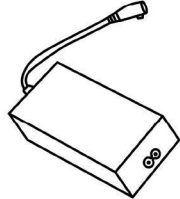
About your furniture piece:

- Fabric will fade or discolor in direct sunlight. Minimize exposure to direct sunlight to extend the life of your furniture.
- Wood grain, knots, streaks, and color variation occur naturally in wood and are not considered defects.
- Dust often and use a vacuum cleaner crevice tool to clean seams. To maintain the fabric appearance, gently clean soiled areas.
- Softening of foam is natural and will happen over time with use.
- Assemble on a soft surface to prevent scratching the finish.
- Carefully remove all of the components from the packaging and set aside for assembly.

FAQ

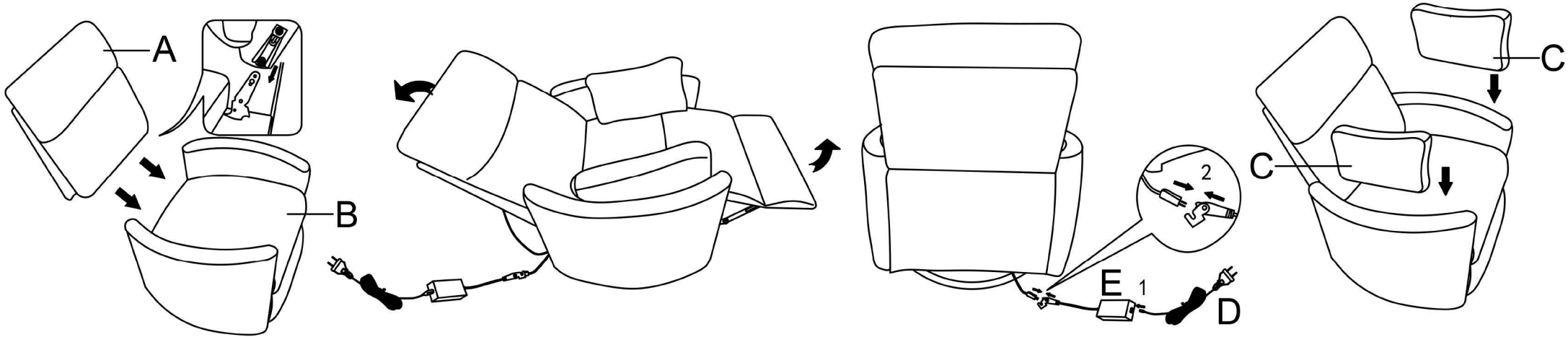
Type of common problem	Common problem	Possible cause	Solution
Installation	The backrest and the base of the clasp can not be aligned	The position of the base/backrest clasp is shifted during transportation	Tighten the clips until they align with the base/backrest clips
	The backrest is unstable after the product is installed	The alignment is loose during the installation.	Reinstall and check that the connection is stable
	Missing parts	Leakage	Please contact us to arrange new parts for you to reissue
Appearance	Backrest / armrest is not fluffy enough	Internal cotton was squeezed together during transportation	Spread the cotton by tapping the problem area to make it fluffy
	The gap between the backrest and the base is large	Internal cotton was crushed together during transport	Spread the cotton by tapping the bottom of the backrest to make it fluffy and reduce the gap
	The gap between the base and armrest is large	Internal cotton was squeezed together during transportation	By patting the armrests to spread the cotton to make it fluffy and reduce the gap
	Product surface leather has indentation	Indentation caused by squeezing during transportation	Gently blow the indentation with a hair dryer and smooth it out with your hands
Function	Product reclining process stuck / does not work	Wires are not connected	Check whether the plug is well connected
		Damaged wire	If the wire is damaged, please contact us to send you a new wire
		Temporary short circuit inside the product	Remote control landing at the same time to the base pressure to make it fall to resume operation

Power Recliner Chair

				
A-1pc	B-1pc	C-1pc	D-1pc	E-1pc



이 설명서에는 중요한 안전 정보가 포함되어 있습니다.
나중에 참조할 수 있도록 읽고 저장해 두세요.



따뜻한 팁:

1. 케이블이 올바르게 연결되어 있는지 확인하고 마모를 방지하기 위해 리프트 의자 바닥 아래의 케이블을 두르지 마세요.
2. 반투명 흰색 바인딩 테이프를 풀어서 와이어 길이를 늘릴 수 있습니다.
3. 접촉 불량 및 단락을 방지하기 위해 전선 연결 지점을無理하게 당기지 마세요.



STRICTLY PROHIBIT

Note: Please arrange the wires in order when using the product, do not cross the wires to avoid the wires being pinched off when using of lift function.



About your furniture piece:

- Fabric will fade or discolor in direct sunlight. Minimize exposure to direct sunlight to extend the life of your furniture.
- Wood grain, knots, streaks, and color variation occur naturally in wood and are not considered defects.
- Dust often and use a vacuum cleaner crevice tool to clean seams. To maintain the fabric appearance, gently clean soiled areas.
- Softening of foam is natural and will happen over time with use.
- Assemble on a soft surface to prevent scratching the finish.
- Carefully remove all of the components from the packaging and set aside for assembly.

FAQ

Type of common problem	Common problem	Possible cause	Solution
Installation	The backrest and the base of the clasp can not be aligned	The position of the base/backrest clasp is shifted during transportation	Tighten the clips until they align with the base/backrest clips
	The backrest is unstable after the product is installed	The alignment is loose during the installation.	Reinstall and check that the connection is stable
	Missing parts	Leakage	Please contact us to arrange new parts for you to reissue
Appearance	Backrest / armrest is not fluffy enough	Internal cotton was squeezed together during transportation	Spread the cotton by tapping the problem area to make it fluffy
	The gap between the backrest and the base is large	Internal cotton was crushed together during transport	Spread the cotton by tapping the bottom of the backrest to make it fluffy and reduce the gap
	The gap between the base and armrest is large	Internal cotton was squeezed together during transportation	By patting the armrests to spread the cotton to make it fluffy and reduce the gap
	Product surface leather has indentation	Indentation caused by squeezing during transportation	Gently blow the indentation with a hair dryer and smooth it out with your hands
Function	Product reclining process stuck / does not work	Wires are not connected	Check whether the plug is well connected
		Damaged wire	If the wire is damaged, please contact us to send you a new wire
		Temporary short circuit inside the product	Remote control landing at the same time to the base pressure to make it fall to resume operation