

ASSEMBLY GUIDE

Congratulations! You are now the owner of a brand new EZAKI chair!









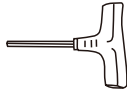
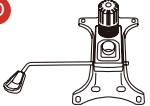

Before enjoying the comfortable chair, you have to put it together. This assembly guide will take you through the basic assembly process. To make sure your assembly goes smoothly, please follow the assembly instructions, **especially the important safety information.**

It is possible to assemble the chair by your own, while **having a second person to help you makes it much easier.**

Firstly, please check if there are any missing parts in the package you receive before start. If there be any issues, please don't hesitate to drop us an email and we'll help you out ASAP.

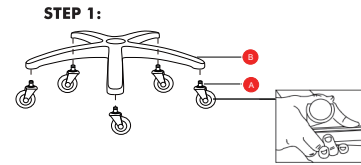


PACKAGE LIST

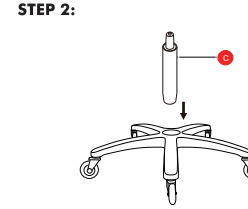
A  Casters *5	E  Arms *2	1  Bolts M6*30mm *12
B  Star Base *1	F  Seat Cushion *1	2  Bolts M6*20mm*2
C  Lift *1	G  Back Cushion *1	3  T-Wrench *1
D  Seat Plate *1	4  Plastic Caps *8	

ASSEMBLY INSTRUCTION

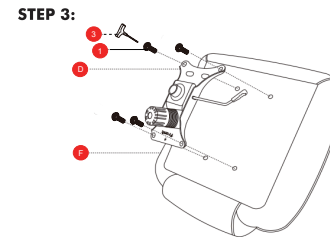
Step 1: Turn the star base upside down, then press the casters into the holes at the end of each base leg.



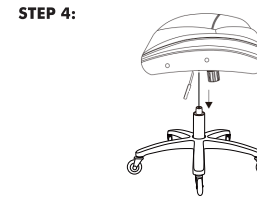
Step 2: Turn the star base upright and insert the lift into the center hole of the star base.



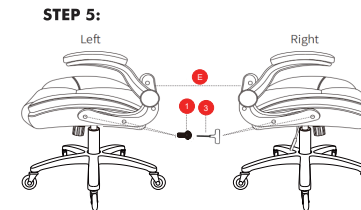
Step 3: Align the seat plate to the bottom of the seat cushion. Make sure that the front of the seat plate is facing the front of the seat cushion. Attach the seat plate to the seat cushion. Using four M6x30mm bolts and four spacers, tighten all the bolts with the T-wrench.



Step 4: Turn the seat cushion upright and align the center hole of the seat plate over the lift, then push the seat cushion down onto the lift firmly until the connection is secure.



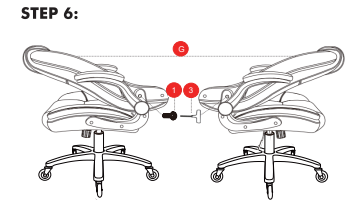
Step 5: Attach the arms to the seat cushion with four M6*30mm bolts using the T-wrench.



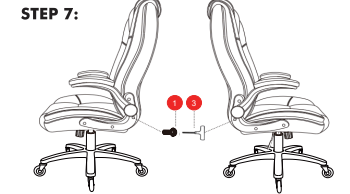
Note : Arm rests are labeled with an "L" (left) or "R" (right) to show which sides they should be placed on

Step 6: Lay the back cushion on the seat of the chair with the top of the cushion toward the front. Attach the back cushion to the arms by inserting two M6*30mm bolts in the lower holes with the T-wrench.

Note : Tighten bolts to 70% , DO NOT tighten fully at this step

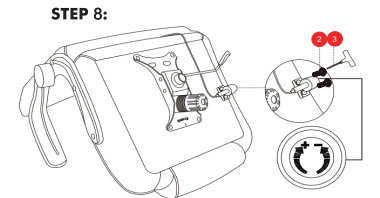


Step 7: Rotate the back of the chair up, then secure it with the top two M6*30mm bolts.

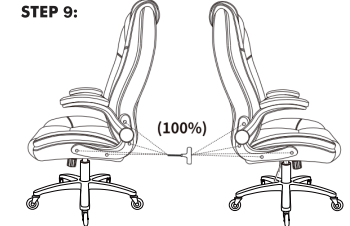


Step 8: Align the back adjuster to the bottom of seat cushion with two M6*20mm bolts.

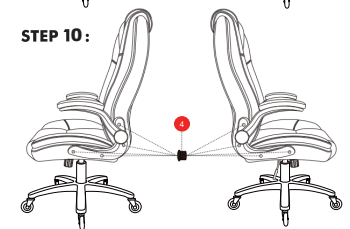
Note : Tighten bolts to 70% , DO NOT tighten fully at this step



Step 9: Adjust the balance first, then fully tighten all the bolts on each side.



Step 10: Press the plastic caps into the armrest holes to cover the bolts.



CAUTION:

Make sure all bolts and screws are fully tightened before using chair. Lubricate all moving parts and tighten all bolts/screws every 6 month or whenever needed.

Before you get started, a few pointers:



Having a friend to help makes assembly extra-easy



Mind the important safety information



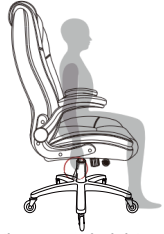
Contact us if you have any issues



service@ezaki.vip

INSTRUCTIONS FOR USE

1 . Seat Height : Paddle-shaped lever on the right side



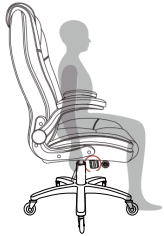
To raise:
While taking your weight off chair, lift lever up.



To lower:
While seated, lift lever up.

* At the proper height, your feet should rest flat on the floor.

2 . Tilt Tension : knob under the seat cushion



To increase tension:
While seated, turn knob forward (toward + sign).



To decrease tension:
While seated, turn knob backward (toward - sign).

* Set the tilt tension to control the resistance you feel when leaning back.

3 . Operating the tilt lockout



To let your chair tilt back, pull the control handle out.

To stop your chair from tilting, sit forward, then push the control handle in.

4 . Armrest function



The armrest can be adjusted up and down.

5 . Adjustable lumbar support



SAFETY AND MAINTENANCE

- Do not stand on the chair, Do not use the chair as stepladder.
- Use this product for seating one person at a time.
- Do not use the chair unless all bolts and screws are firmly secured.
- Avoid contact with sharp objects to prevent puncturing the fabric.
- Every 6 months, check all bolts and screws to ensure they are tight.
- To clean, spot clean only using a damp towel and mild cleaner, first test on a small, obscure area of fabric.

SAFETY INFORMATION



LIMITED WARRANTY

EZAKI promises to repair or replace an EZAKI chair that is found to be defective in material or workmanship within one (1) year from the date of original purchase so long as you, the original purchaser, still owns it. This is your sole and exclusive remedy. This warranty is subject to the provisions below.

EXCLUSIONS:

This warranty does not apply and no other warranty applies to:

- Normal wear and tear, which are to be expected over the course of ownership.
- Misuse, abuse or excessive use of the product.
- Modifications or attachments to the product that are not approved by EZAKI.
- Products that were not installed, used, or maintained in accordance with product instructions and warnings.
- Products used for rental or commercial purposes.
- Damage caused by the carrier in-transit is handled under separate terms.

Seating Usage: Normal use for seating is identified as the equivalent of a single shift, forty- (40) hour workweek. To the extent that a seating product is used in a manner exceeding this, the applicable warranty period will be reduced in a pro-rata manner.

Some retailers might have custom models imported direct from the factory and therefore are not supported by our local service team because we don't have the correct parts, please contact your retailer directly for support. If you have any questions about that we will be happy to assist and identify those items.

RETURN POLICY :

We adopt a 30 days return policy which means that all products purchased on this website may be returned to us within the timeframe. You need to contact us within 30 days after the product(s) came into your possession and the product(s) must be returned to us without any undue delays.

Returned products must be returned in the same condition as they were sent and they must be sent in its original packaging.

If the product is not faulty, (i.e. if you changed your mind or if you are unhappy with the product for some other reason), the cost of shipping will fall on you. And it is your responsibility that the package arrives safely to us so we recommend that you use a courier service where it is possible to track the shipment.

If the product is faulty when you receive it please contact us and we will help you out.

We reserve the right to give a partial refund in cases when the product(s) is not in an unused condition, is damaged or have missing parts not due to our error.

HOW RETURNS WORK :

Contact us through the contact form on our website and attach the invoice to the message as a proof of purchase. And please also write the reason for return.

We will then get back to you as soon as possible with information on where to send the product(s).

As soon as we have received the product(s) and made an inspection we will inform you of our decision.

If a refund is approved we will automatically credit the purchase to your credit card or original method of payment.

service@ezaki.vip

Before you get started, a few pointers:



Having a friend to help makes assembly extra-easy



Mind the important safety information



Contact us if you have any issues