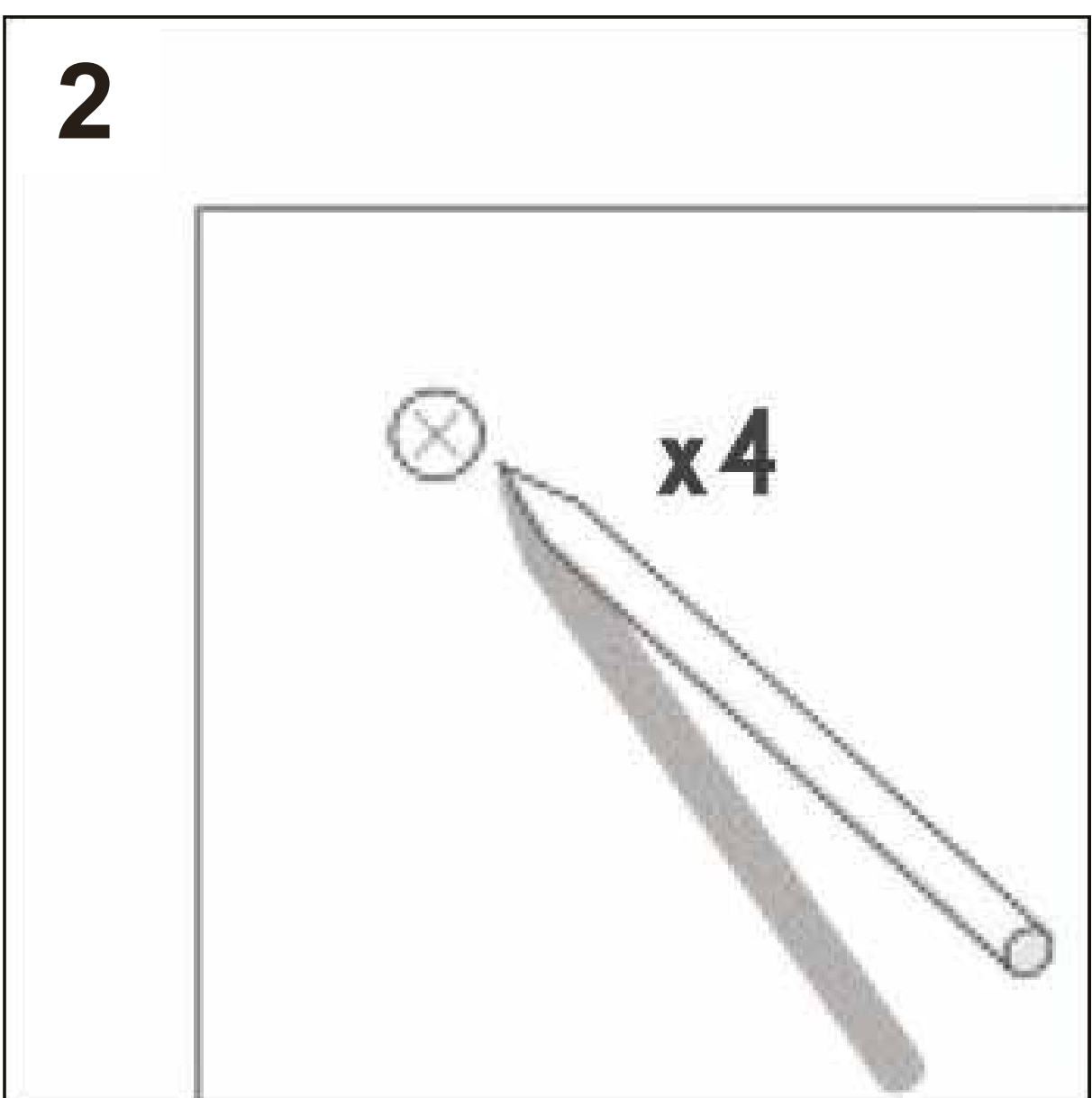
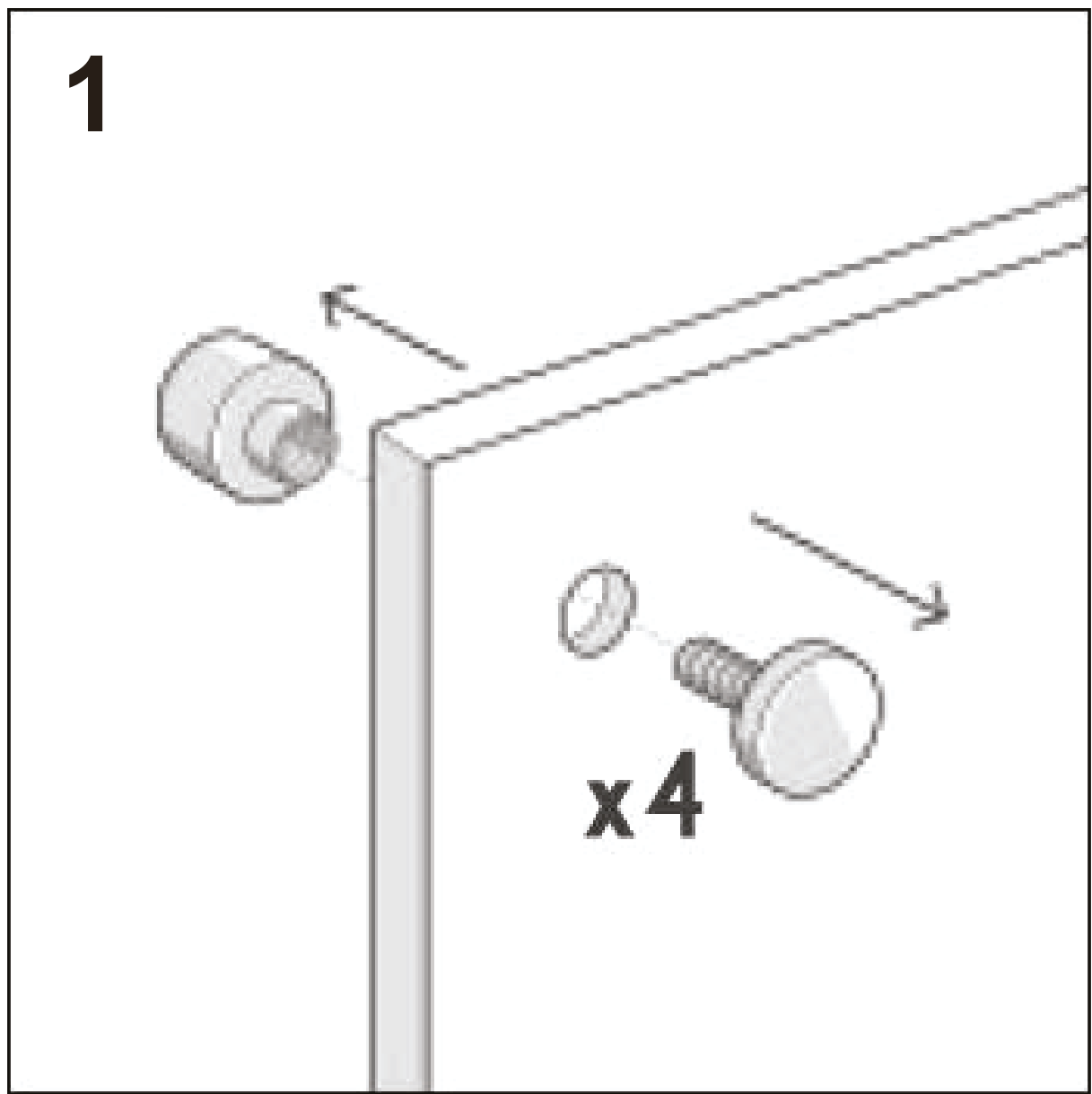






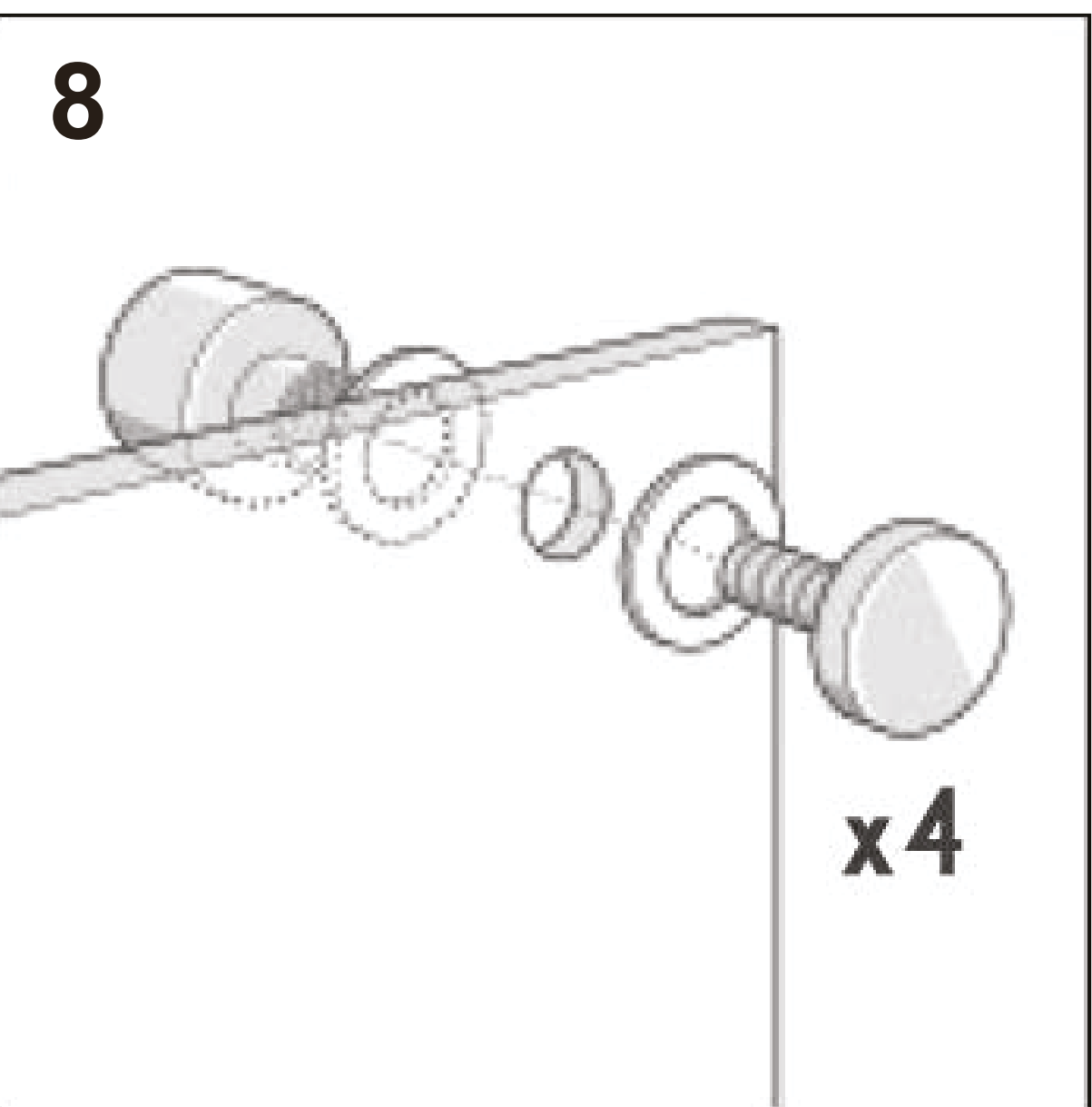
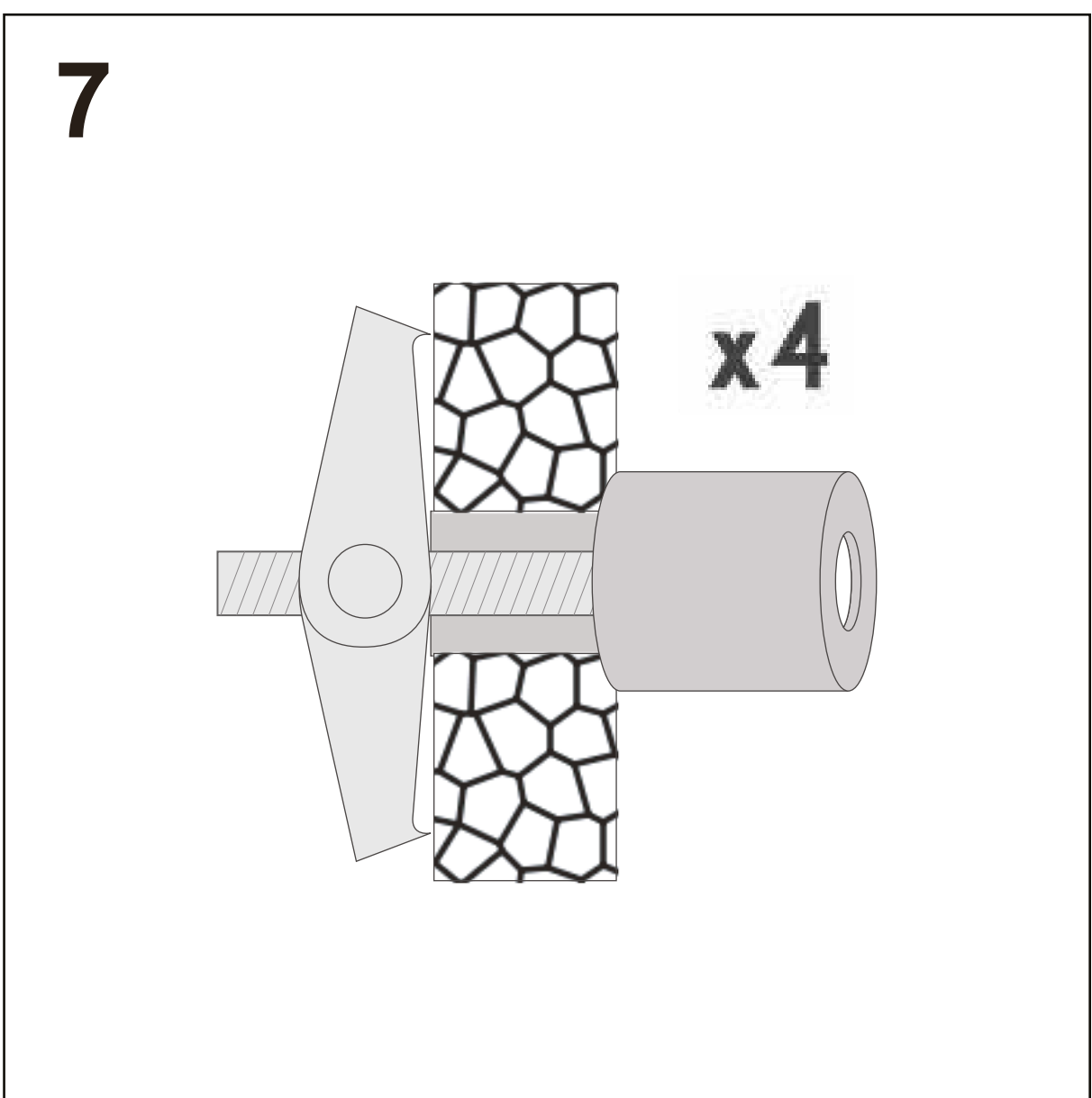
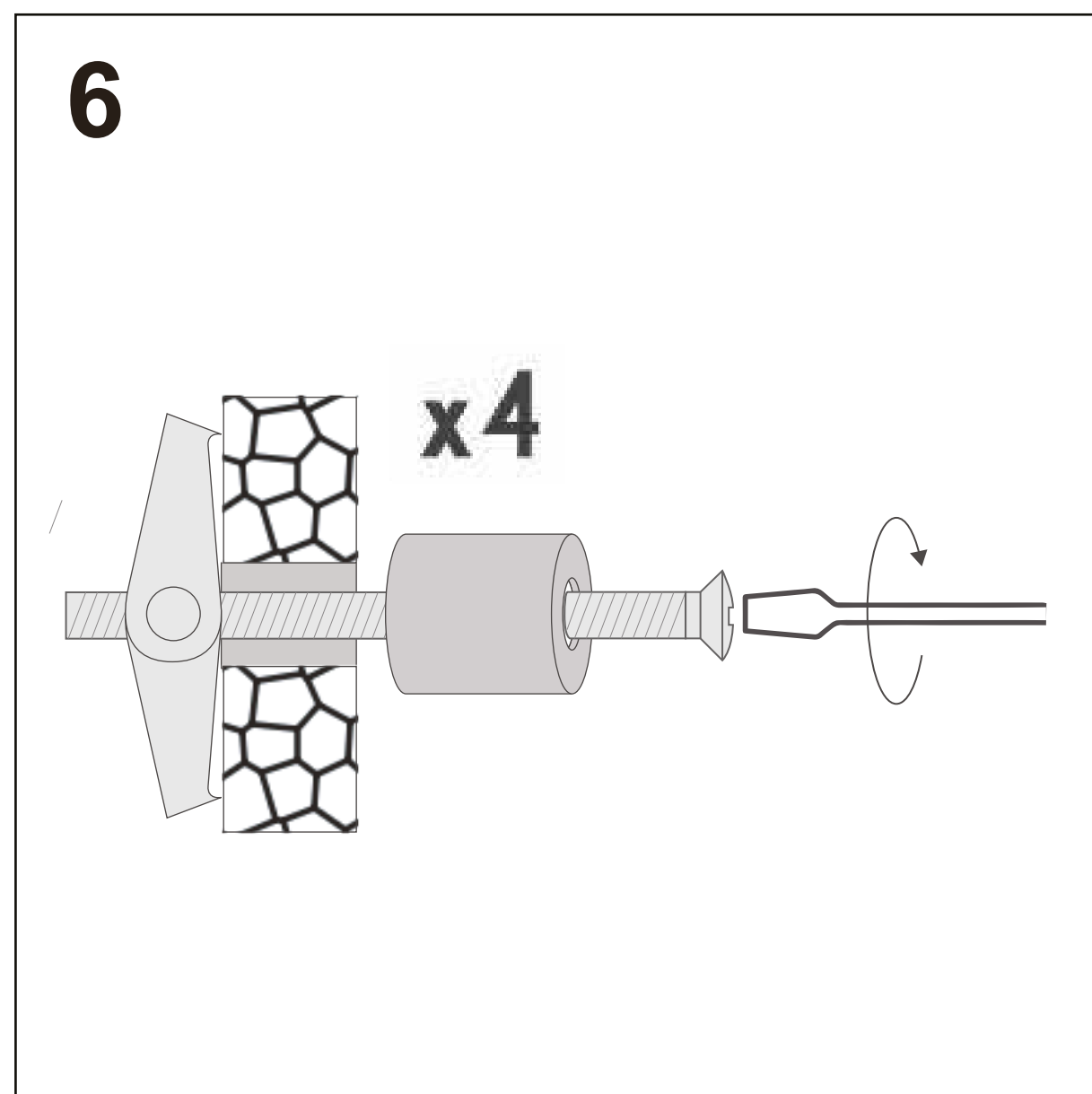
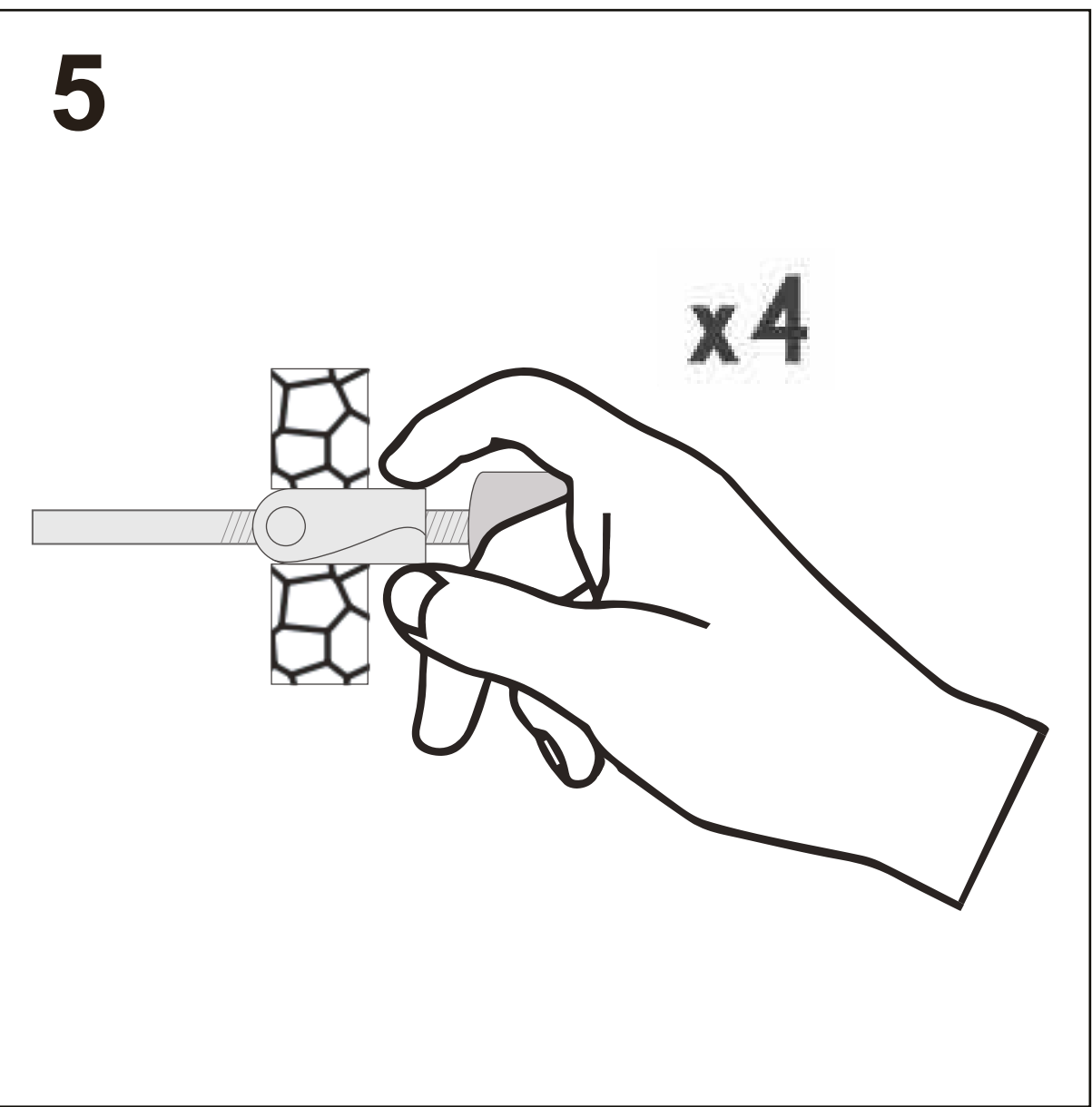
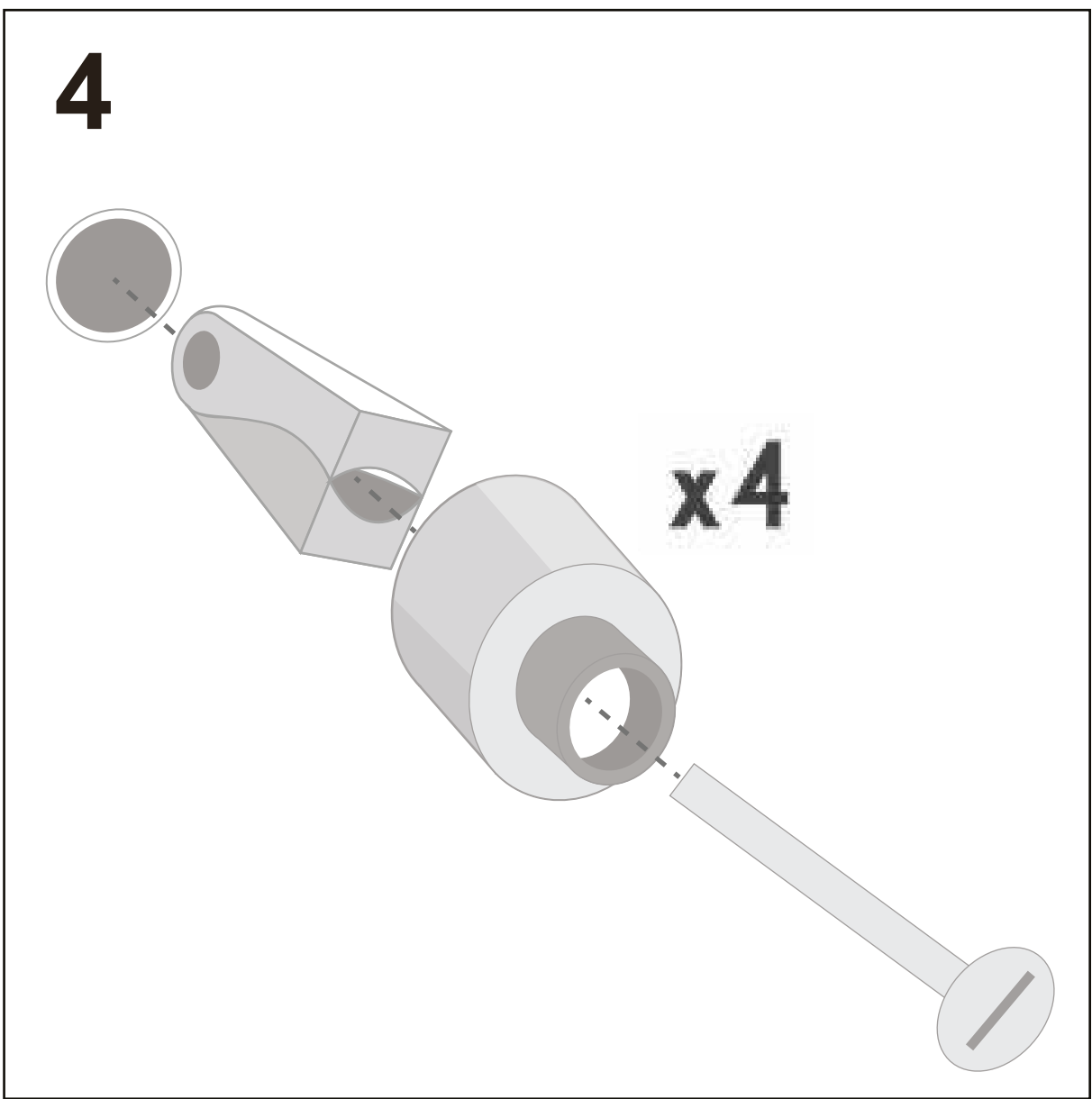
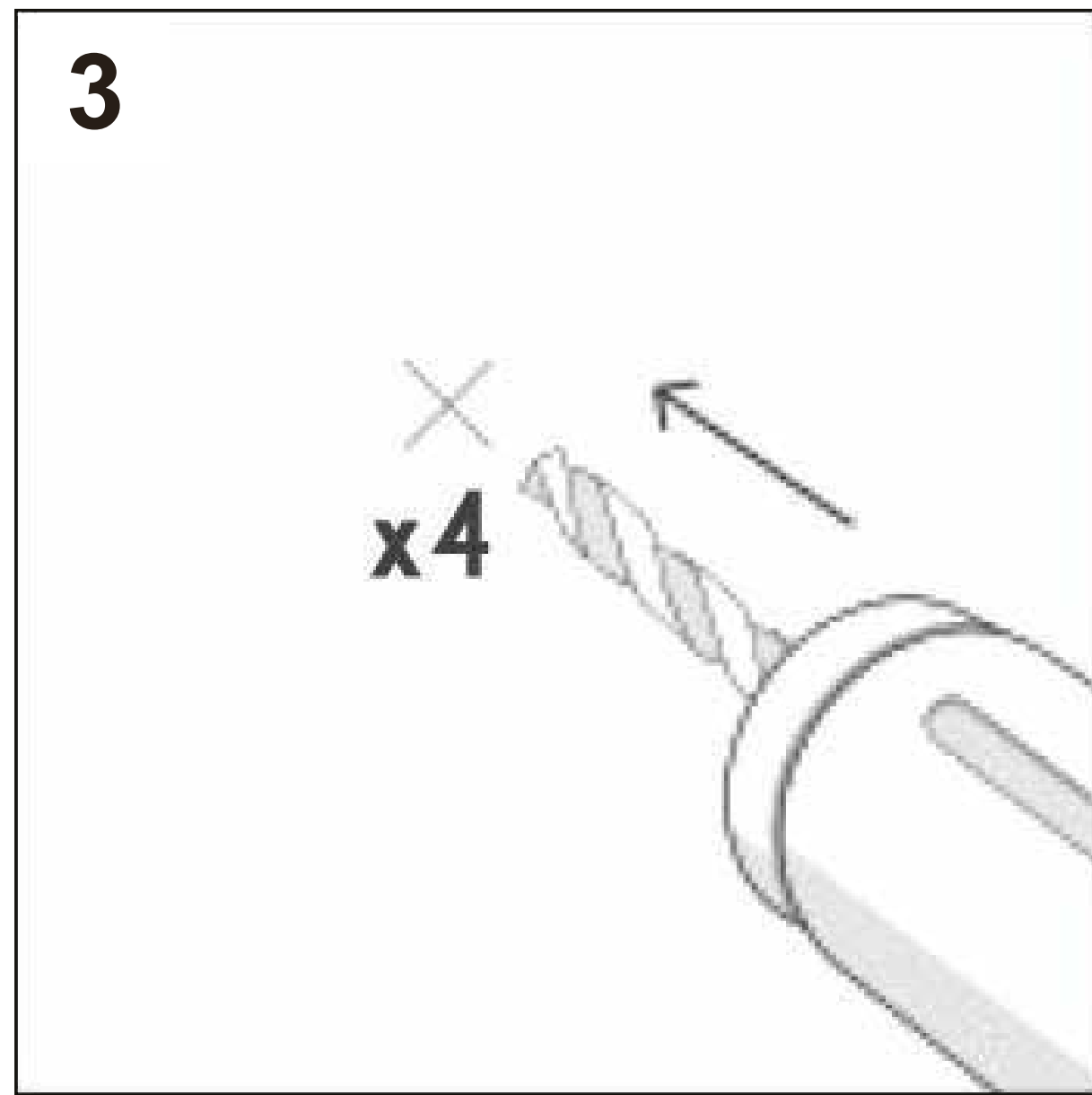


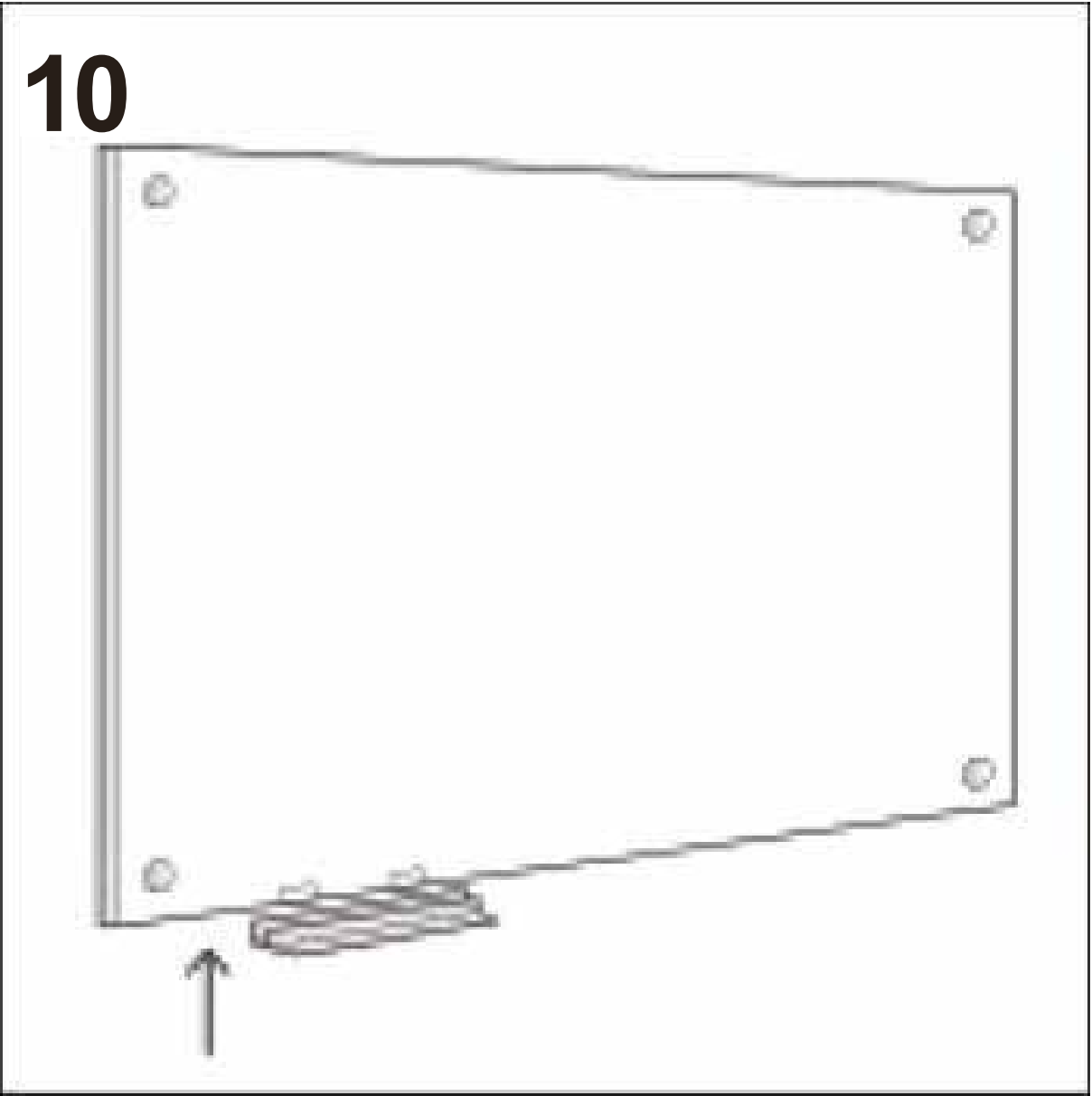
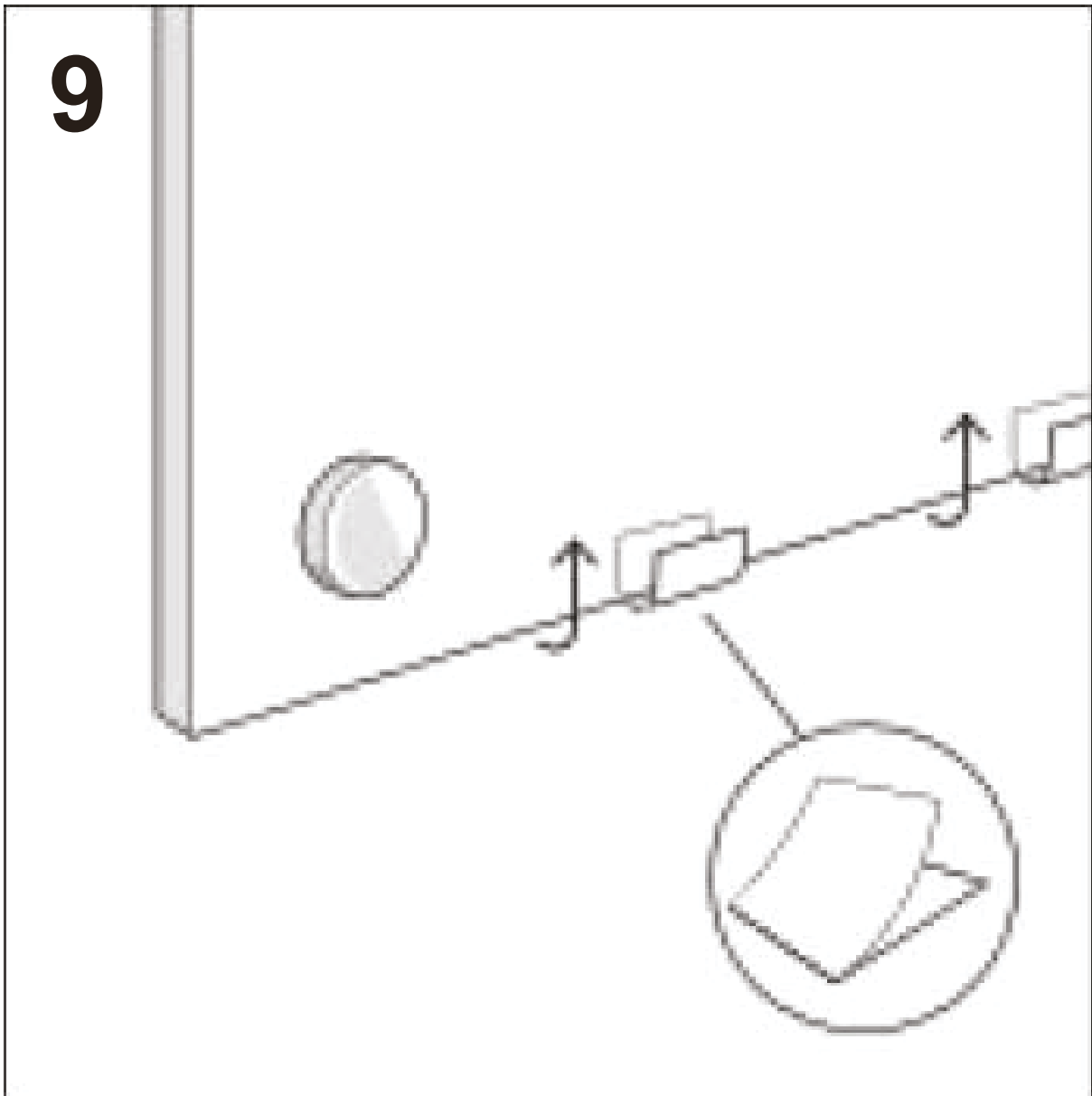
Glass Eraser Board

Assembly Instructions

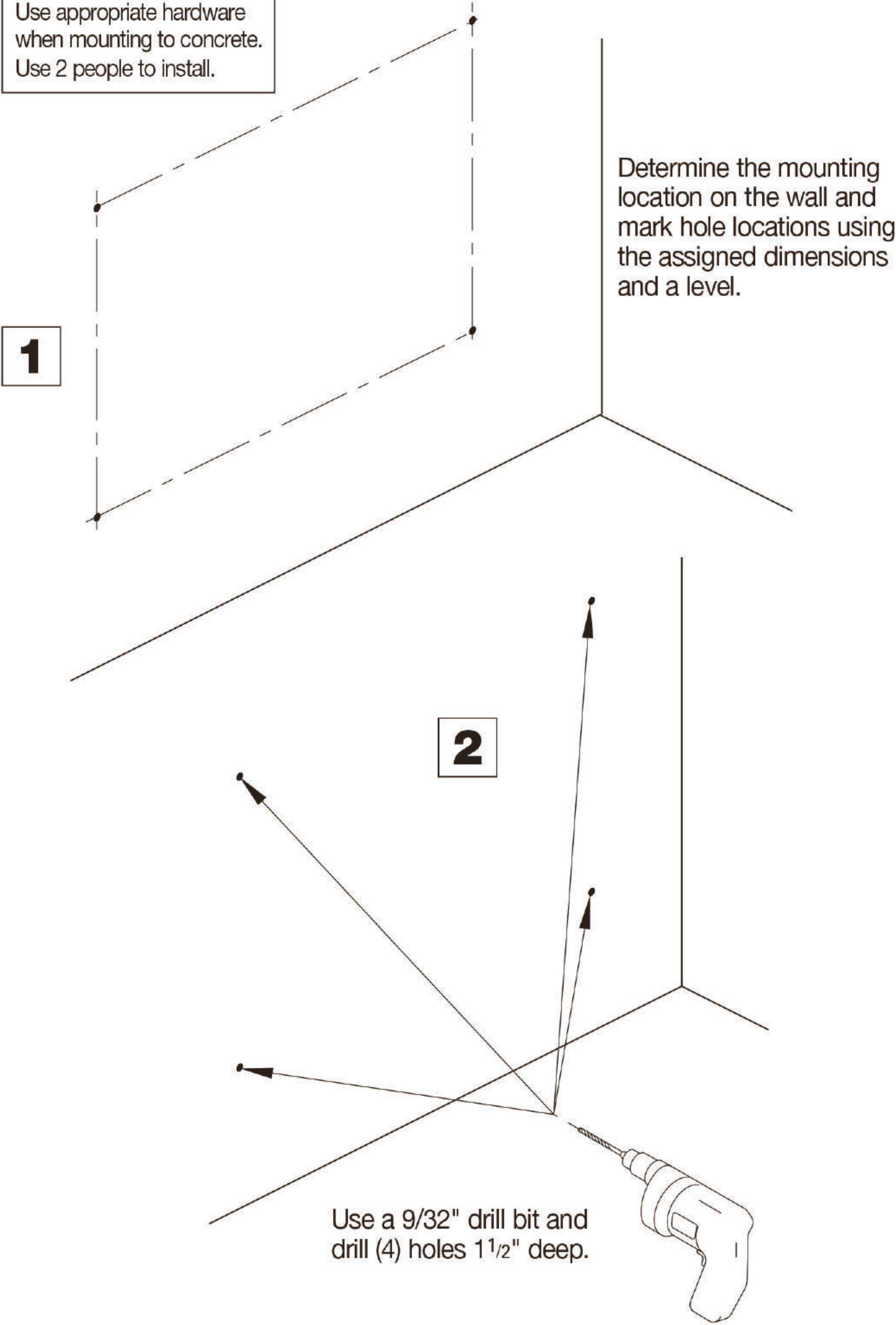


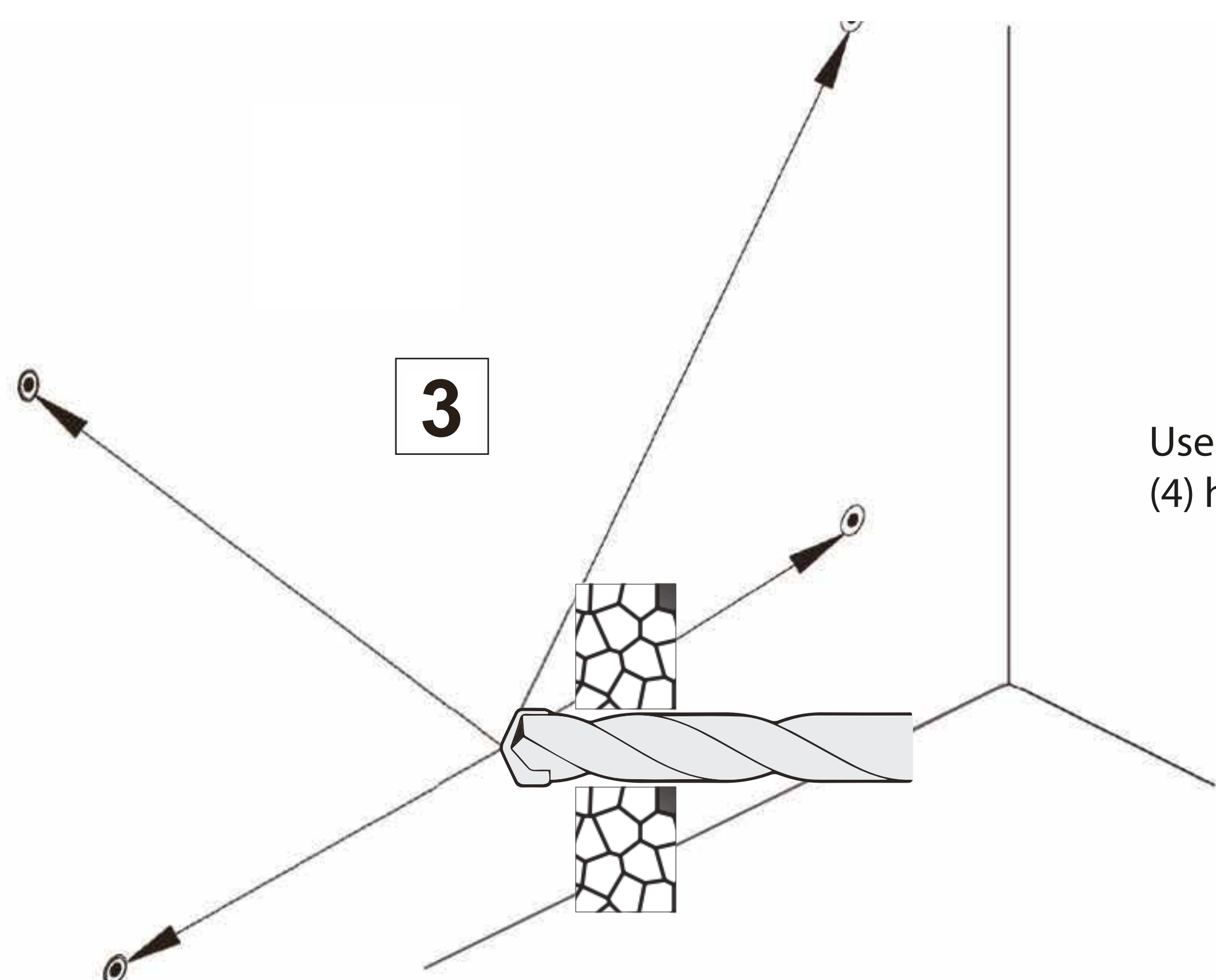
Contents Magnetic Glass		
Ref.	QTY.	Description
1	1	Glass Board
2	1	Pen Holder..... 
	4	Magnet
	1	Eraser
H1	4	Toggle Bolts..... 
H2	4	Standoff..... 
H3	4	#6 Phillips Pan Head Screw 1 ¹ / ₂ Lg. 
H4	4	Rubber Washer 
H5	4	Cap Screw..... 



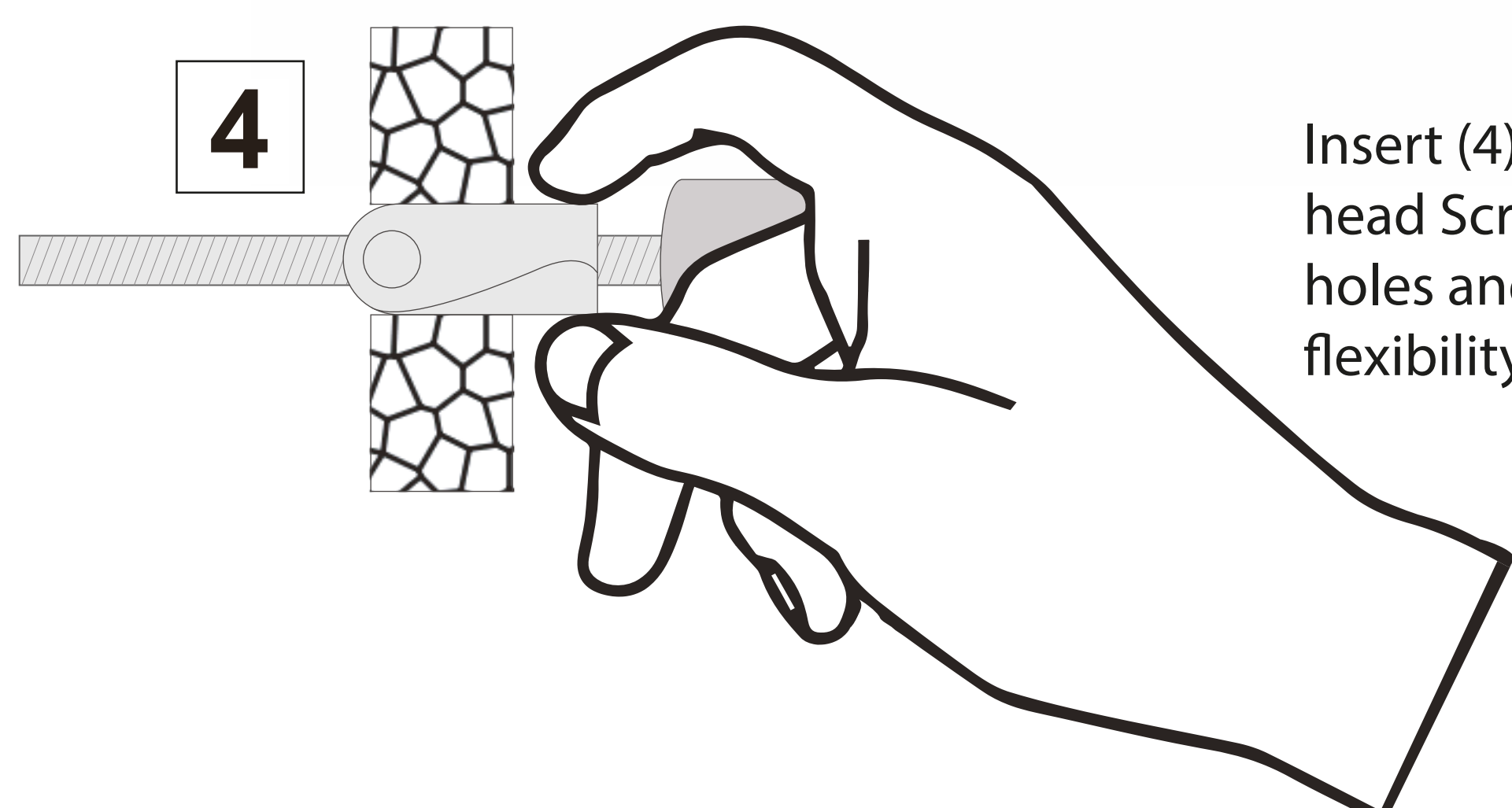


⚠ WARNING:
Use appropriate hardware
when mounting to concrete.
Use 2 people to install.

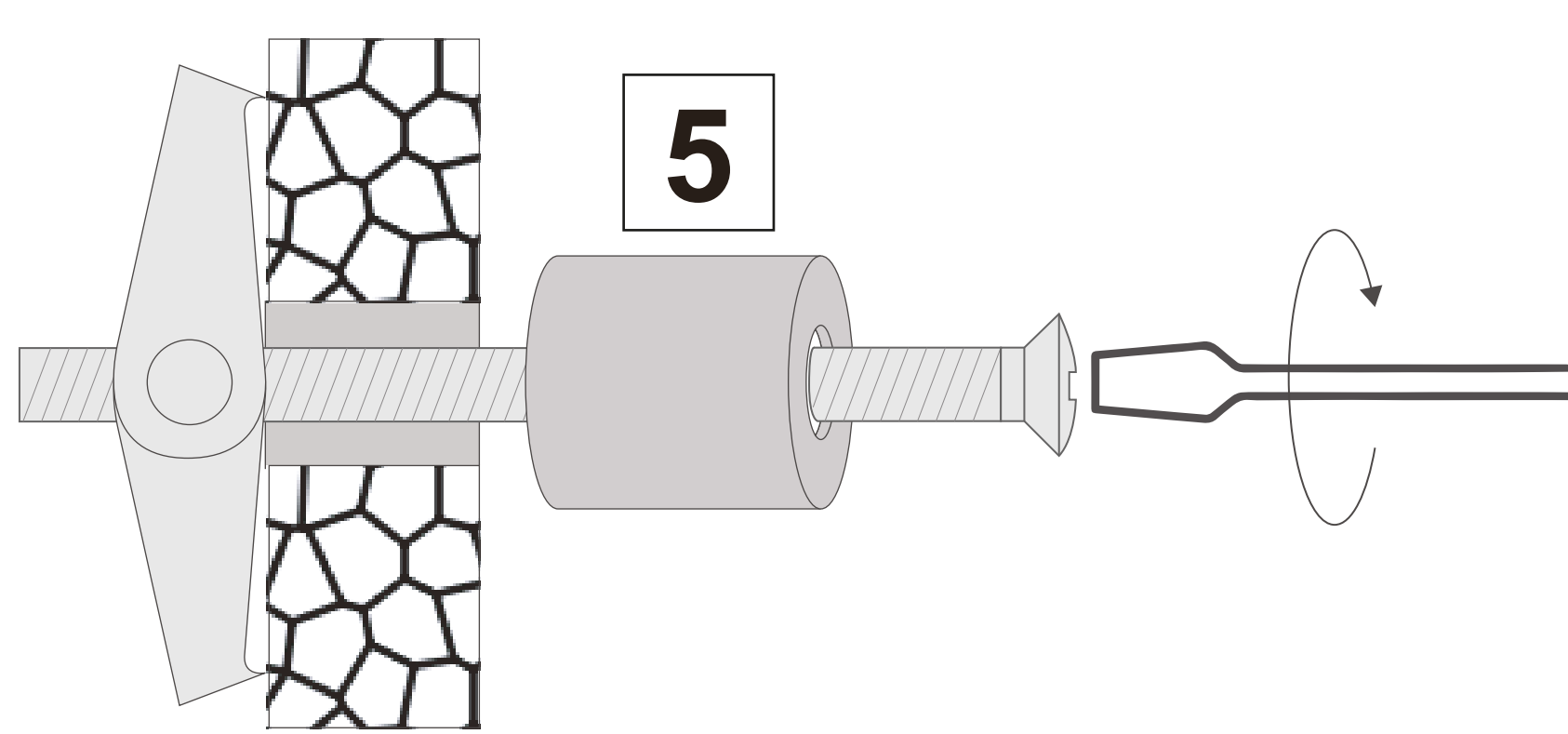




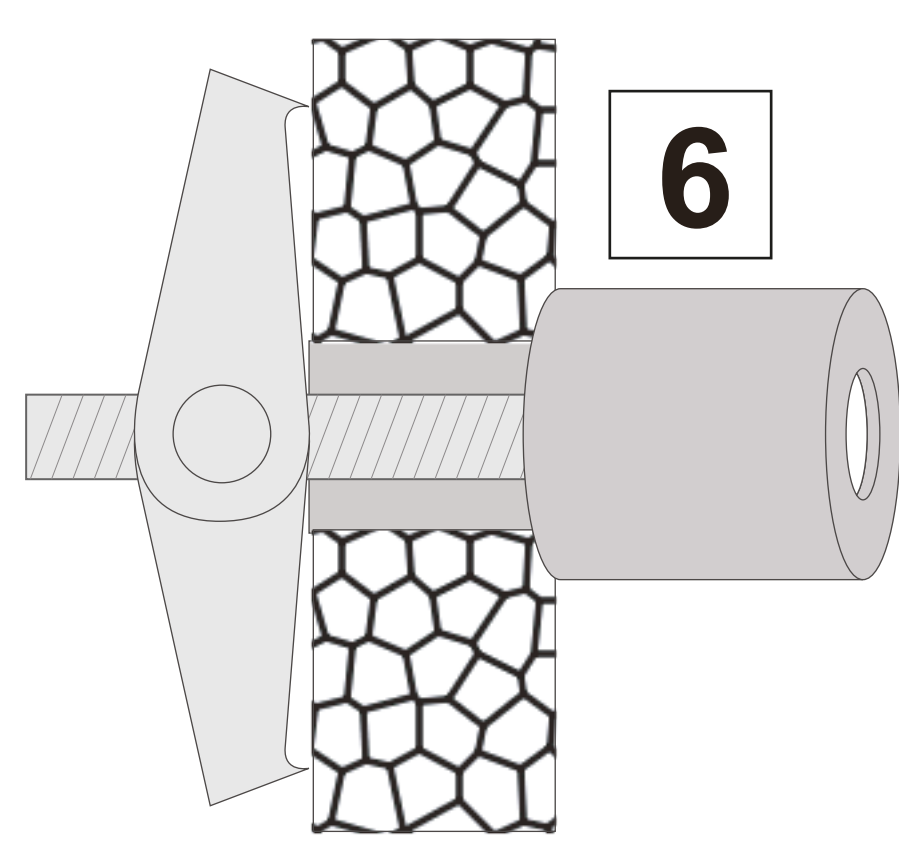
Use a 9/32" drill bit and drill (4) holes 1/2 deep.



Insert (4) Phillips pen head Screws to these holes and check the flexibility.



Attach Standoffs and Toggle Bolts to Phillips pen head Screws provided and fix these with the help of screw driver.



Fix hardware like this shown in the Figure. Attach (4) cap screws provided with Standoffs and fix the Glass Eraser Board.

