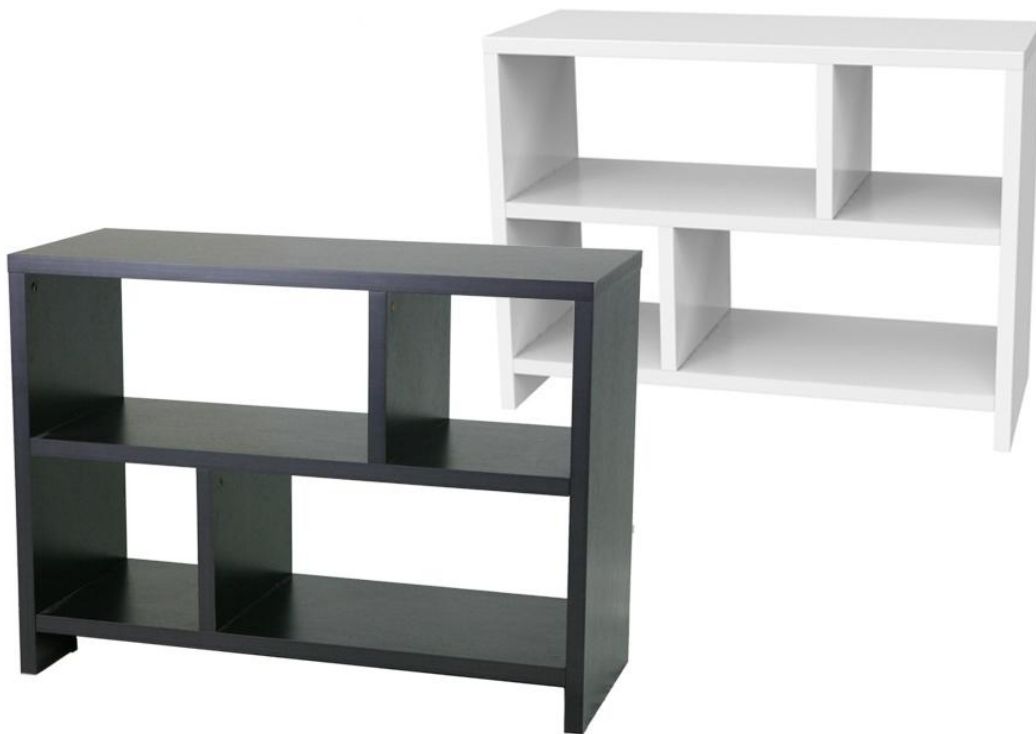


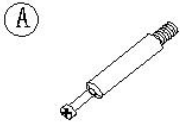
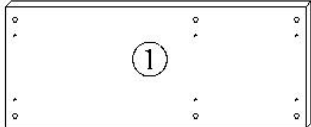

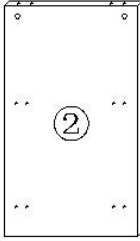
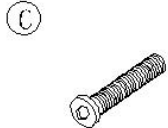
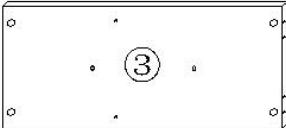
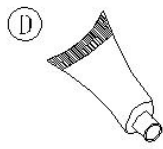
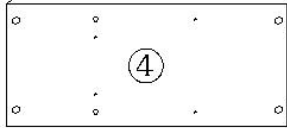


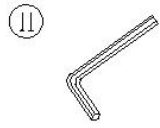

CONSOLE BOOKCASE

Instruction

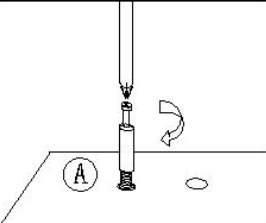
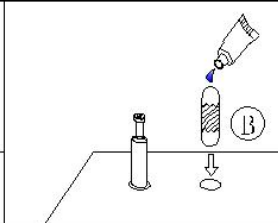
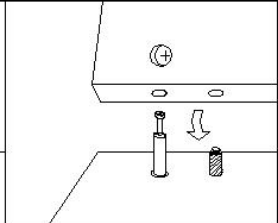
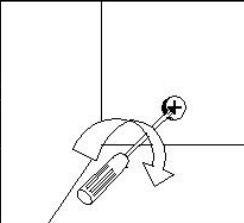


Assembly Instructions

We have designed our furniture with you, the customer in mind. Our clear, easy to follow, step by step instructions will guide you through the project from start to finish. Feel confident that this will be a fun and rewarding project. The final product will be a quality piece of furniture that will go together smoothly and give years of enjoyment.

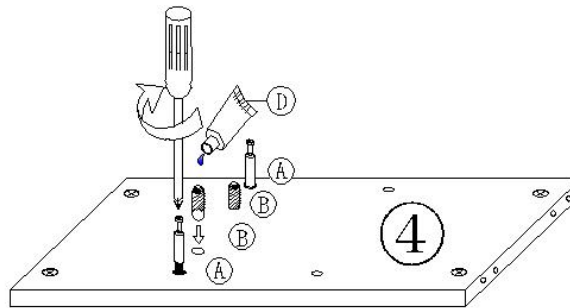
Hardware List	Panel List
 Cam dowel (18pcs)	 Top panel (1pc)
 Wood dowel (20pcs)	 side panel (2pcs)
 Allen screw (4pcs)	 Bottom panel (1pc)
 Glue (1pc)	 middle panel (1pc)
 Plastic Cap (G:16pcs; 1:2pcs)	 Divider panel (2pcs)
 Allen wrench (1pc)	 Bottom support panel (1pc)

Assembling the unit with cam and wood dowels.

			
Gently screw cam dowel into the threaded anchor.	Lightly glue one end of the wood dowel and tap halfway into hole.	Connect to second panel by inserting dowels into holes.	Screw the cam firmly into locked position.

step1

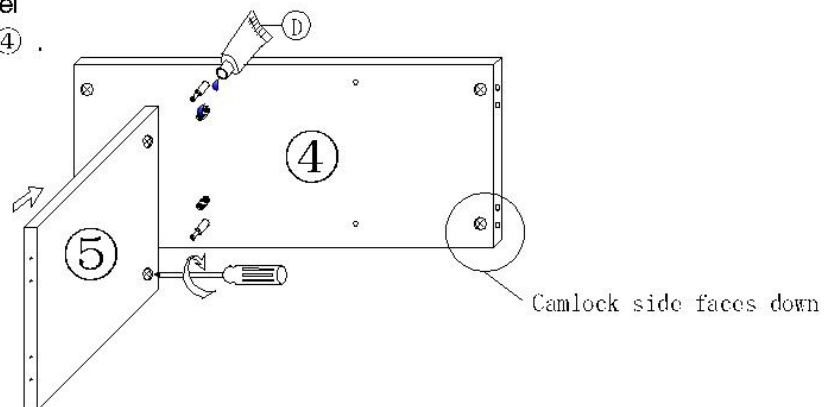
Attach dowel hardware to middle panel ④ .
Apply glue to wood dowels.



* Refer to page 2 for dowel assembly

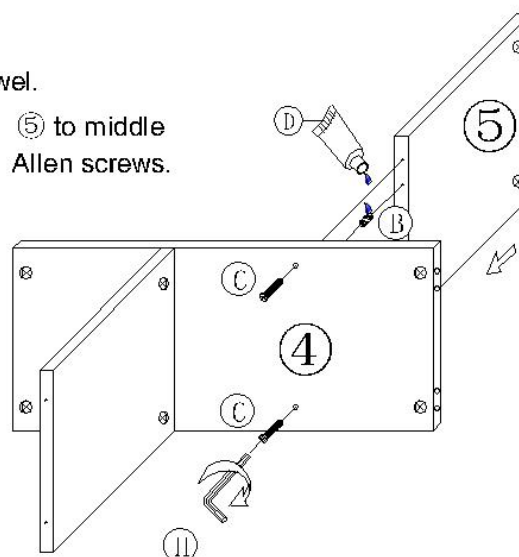
step2

Connect the divider panel ⑤ to the middle panel ④ .
Tighten camlocks.



step3

Lightly glue wood dowel.
Connect divider panel ⑤ to middle panel ④ .Fasten with Allen screws.

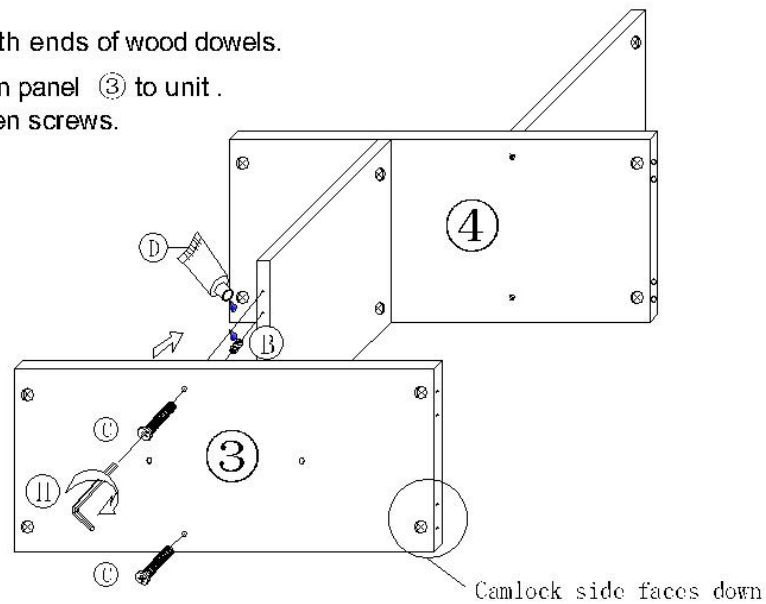


step4

Lightly glue both ends of wood dowels.

Connect bottom panel ③ to unit.

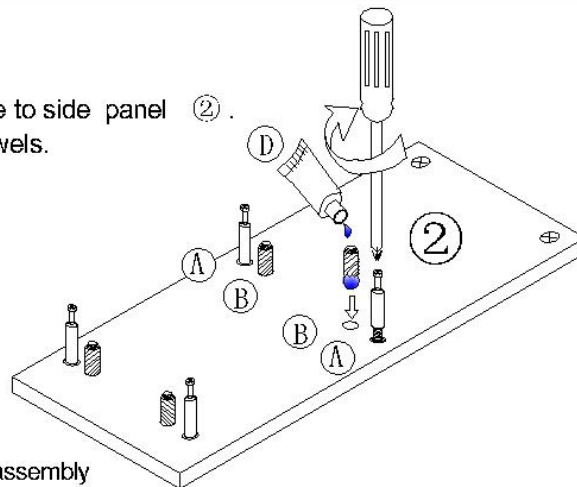
Fasten with Allen screws.



step5

Attach dowel hardware to side panel ②.

Apply glue to wood dowels.

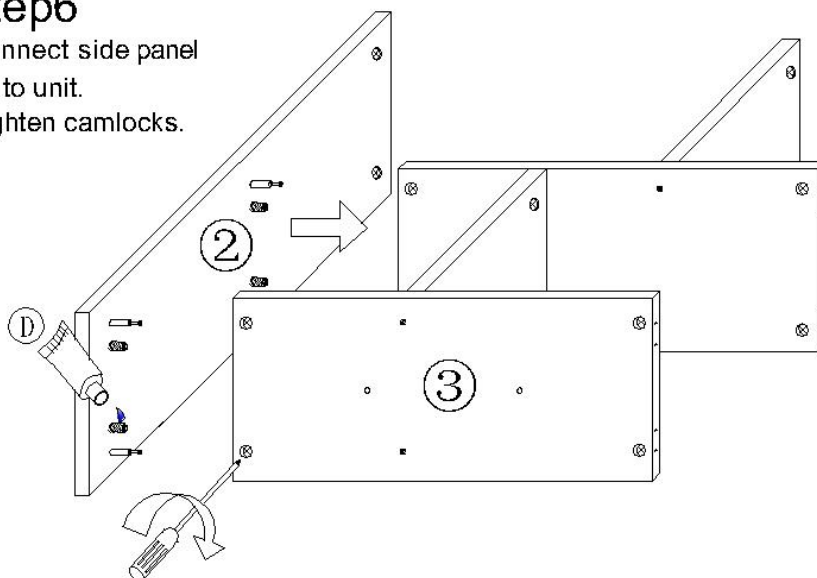


* Refer to page 2 for dowel assembly

step6

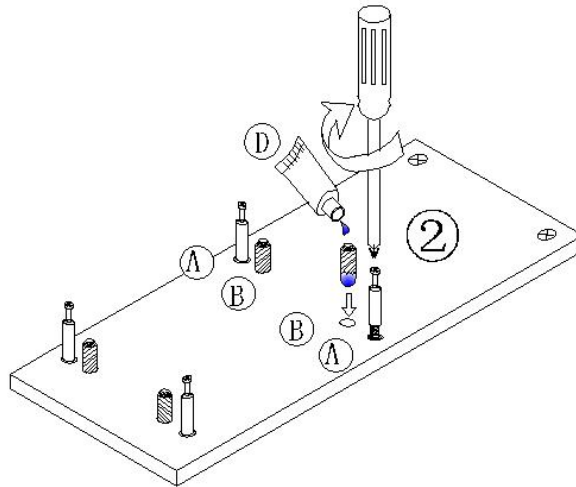
Connect side panel ② to unit.

Tighten camlocks.



step7

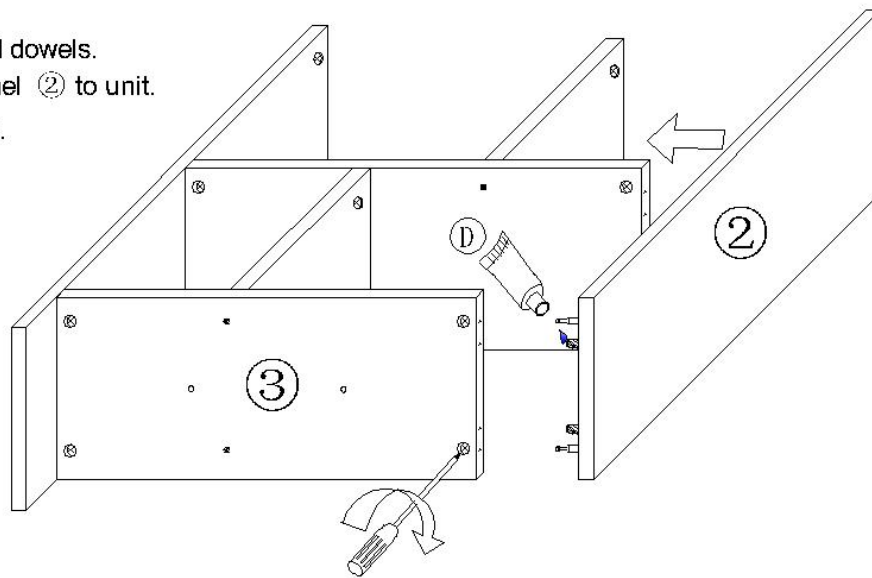
Attach the dowel hardware to side panel ②.
Apply glue to wood dowels.



* Refer to page 2 for dowel assembly

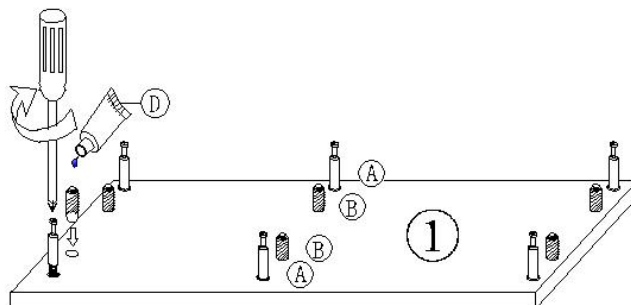
step8

Lightly glue wood dowels.
Connect side panel ② to unit.
Tighten camlocks.



step9

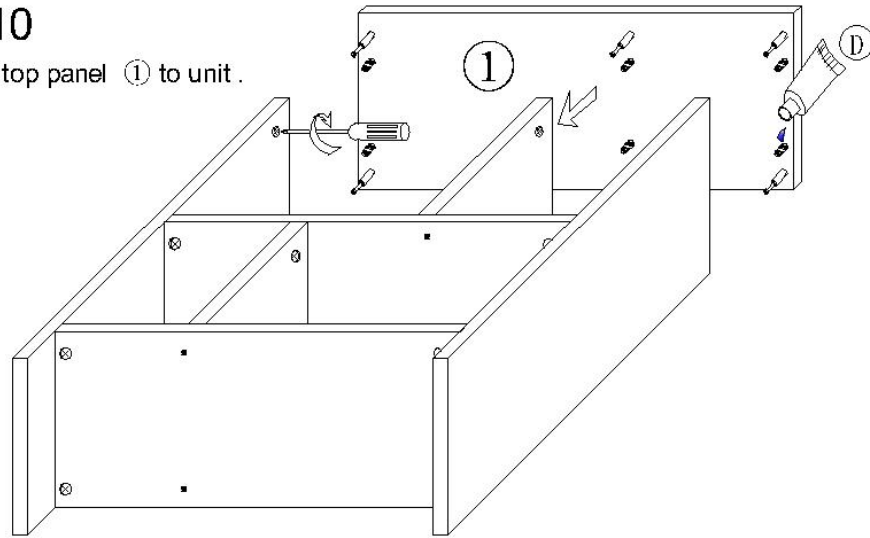
Attach dowel hardware to top panel ①.
Apply glue to wood dowels.



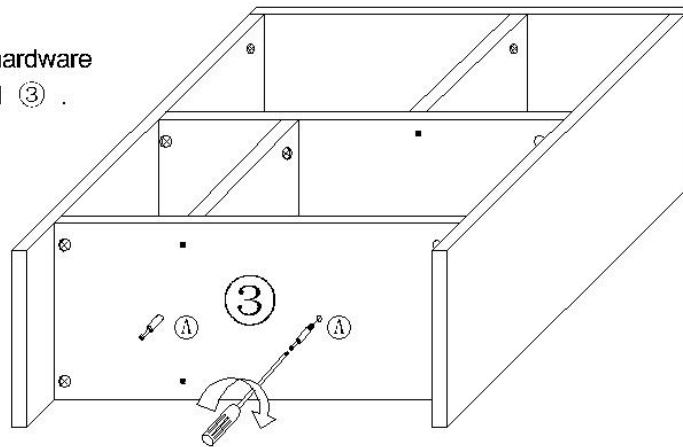
* Refer to page 2 for dowel assembly

step10

Connect top panel ① to unit .

**step11**

Attach dowel hardware
to bottom panel ③ .

**step12**

Connect support panel
⑥ to bottom panel ③ .
Double check all
camlocks are tight.

