

## Full Length Mirror (3 Installation Options)



1.Free standing



2.Lean to the Wall



3.Hang on the Wall

### Installation Instruction

Before  
Installation

- \* Please make sure that the installed wall is a load bearing wall.
- \* Please attention to avoid wires or water pipes when drilling.

### Product and accessories



Mirror\*1



Power adapter\*1



Non-slip Mat\*6



Screw\*2  
Expansion screw\*2

### Tools Needs (not included in the package)



Pencil



Electric Drill



Hammer



Tapeline



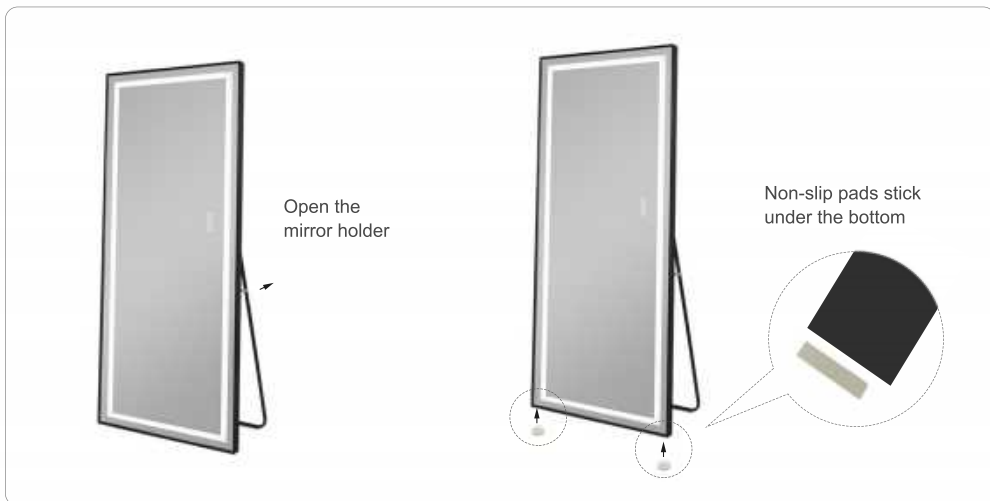
Level Ruler



Screwdriver

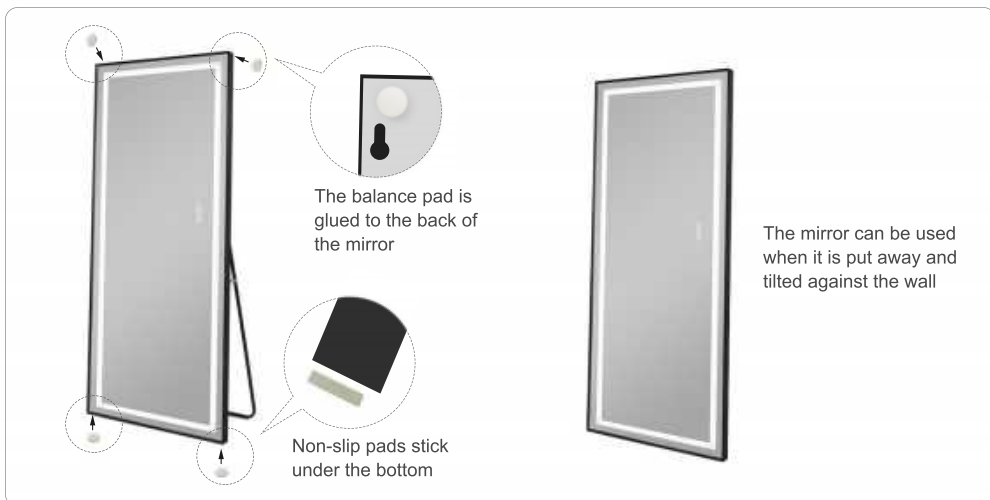
## 1. Free standing

Attach two non-slip pads to the bottom of the mirror, and stretch the support under the ground directly .



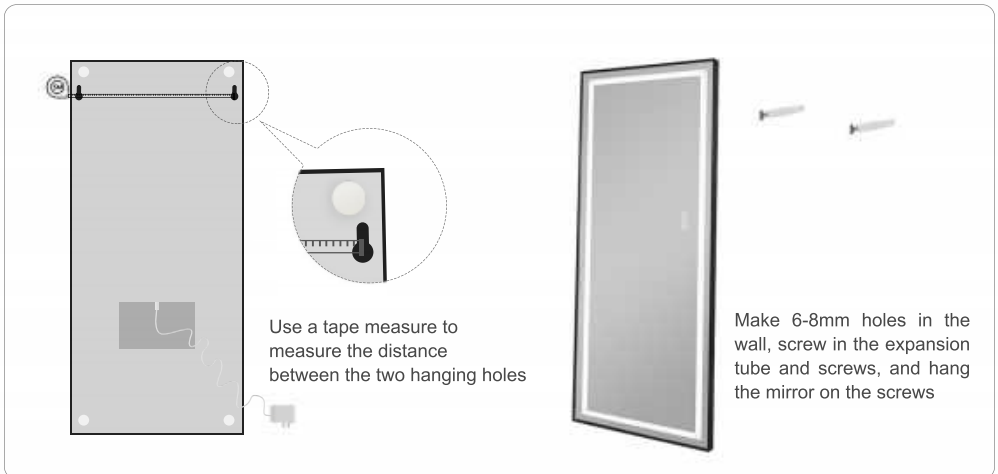
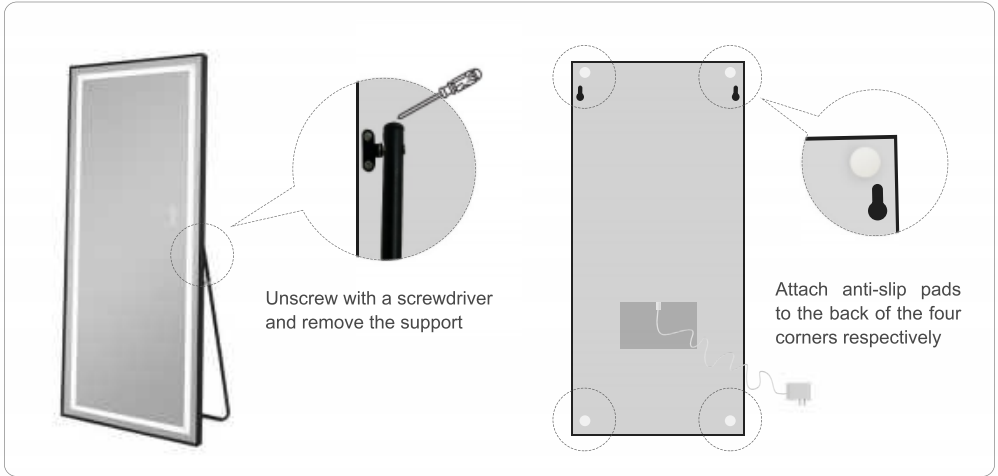
## 2. Lean to the Wall

Put two non-slip pads on the bottom, two non-slip pads on the back of the mirror, put the bracket away and lean against the wall.



## 3. Hang on the Wall

Remove the support of the mirror, paste four anti-slip pads on the back of the mirror, drill holes on the wall and screw into the expansion tube and screws, and hang the mirror on the screws





- **Power button**



- **Short press the switch** : Switch the light color
- **Long press the switch** : Adjust the color temperature



- **Long press the switch** : Infinitely adjust the brightness



#### When turning off the lights

All switches light up slightly



#### When turning on the lights

All switches light up



#### More attention:

1. Please take care to ensure that all metal parts are kept away from electricity
2. For indoor use only.



Fragile Handle with care

#### Note:

The product is fragile. Be careful during unpacking and installation.

The product works from  $-45^{\circ}\text{C}$  to  $+35^{\circ}\text{C}$ .  
The product should be cleaned by standard detergents and soft cotton cloth.