

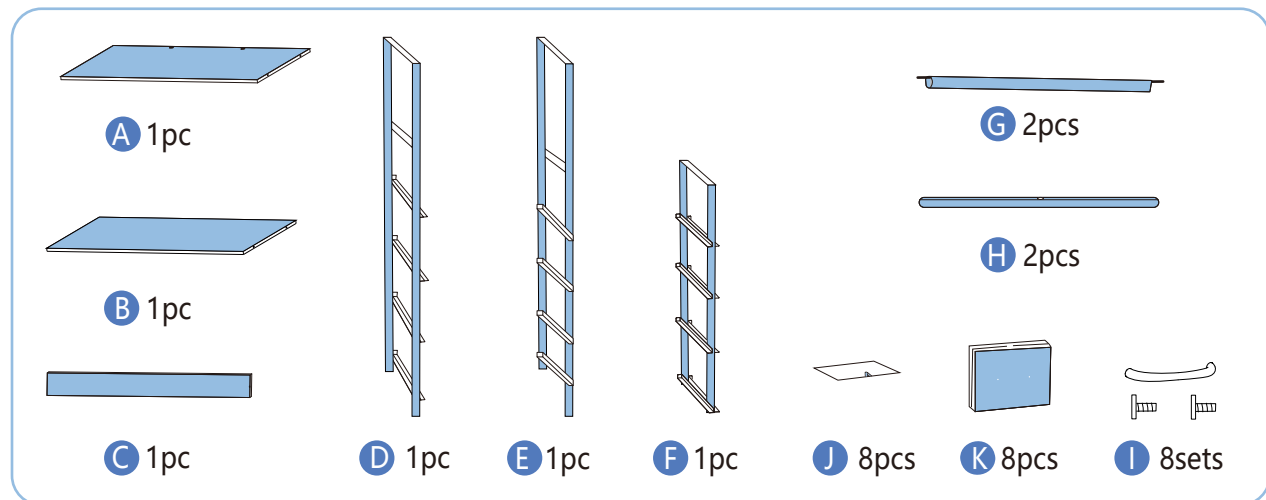
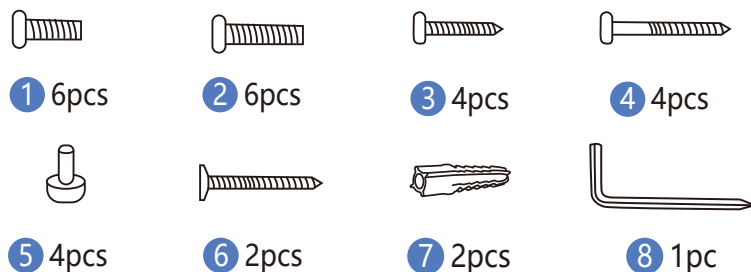
# Assemble Instruction

**ATTENTION: Do not tighten the screws until you have complete setup assembly.**

*If you have any question about the instructions, please kindly check out the installation video on our link page.*

## Product Assembly Accessories:

We prepare a spare one for part of the screws in case of damage or loss.



## Product Assembly Steps:

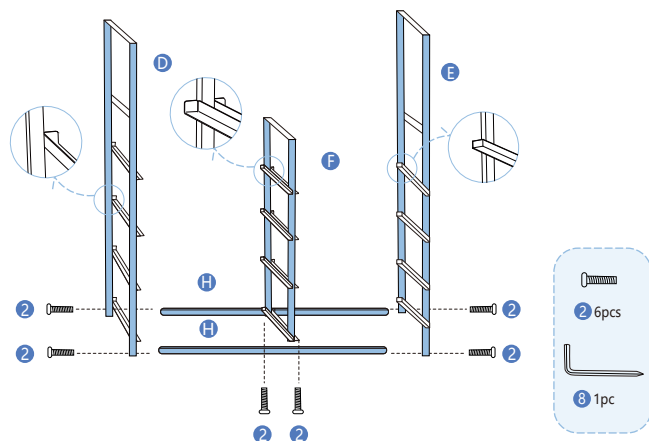
Do not tighten the screws until you have complete setup assembly.

### step1:

1. Secure the frame **H** between the frame **D** and **E** with **2** screws.

2. Fix the frame **F** to the frame **H** with **2** screws.

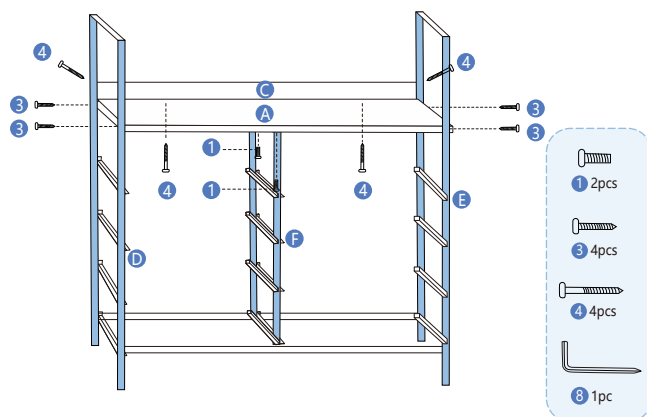
**Note:** The directions of the baffles at the end of the slots of the three frame drawers are the same.



### step2:

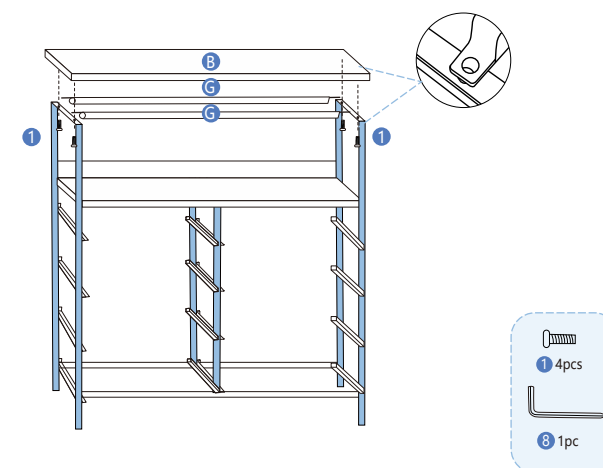
1. Secure the wood board **A** to the frame **D** and **E** with **3** screws, and connect the board to frame **F** with **1** screws. Note: Screw **1** is the shortest and should not be overtightened.

2. Secure the backboard **C** with **4** screws.



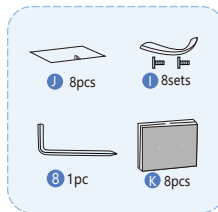
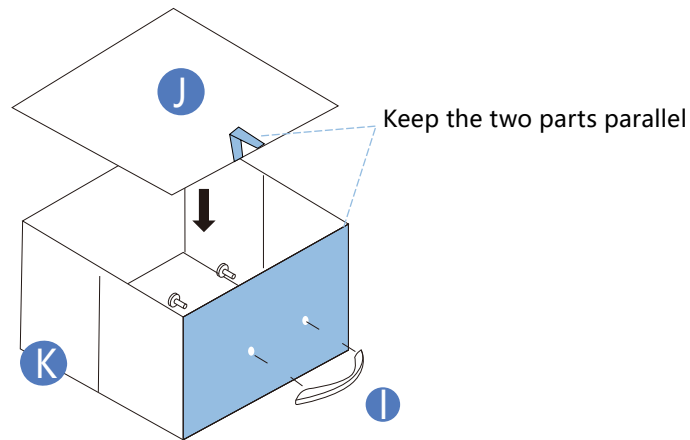
### step3:

Secure the top board **B** and fix **G** frame with **1** screws.



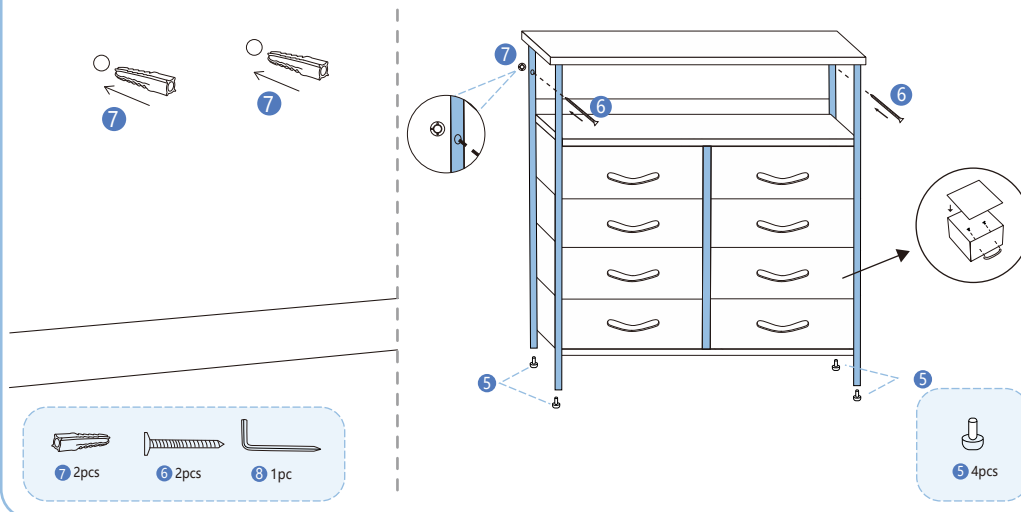
#### step4 :

Install the handle **I** on the drawer **K** with screws, insert the inner board **J**.



#### step5 :

Use a power drill to make holes in the wall, insert **7** expansion screws, and fix the dresser with **6** screw.



## Assembly Notes:

- ◆ It is recommended that you categorize the accessories before installation to quickly find the required accessories during installation.
- ◆ When assembling the drawer, make drawer bottom handle and the drawer wooden handle remain parallel.
- ◆ When install the frame, please make sure that the metal drawer support at the same direction.

## Matters Needing Attention:

- ◆ Please make sure the weight of the objects you put in the drawers follows the allowed weight standards.  
Max static load capacity of the tabletop: 40lb  
Max static load capacity of each drawer: 7lb
- ◆ Washing the entire dresser can be detrimental to its construction. Please clean it gently with a wet cloth instead.
- ◆ A smell of wood is present on all new products. Please keep the dresser in a well-ventilated room soon after construction so that the odor can leave.
- ◆ Secure the dresser to the wall with our provided anti-tip kit to enable stability and protection for your loved ones.