

caracole



LINE ME UP

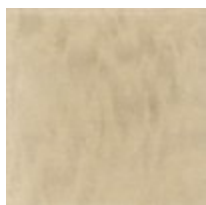
cla-418-281

COLLECTION: Caracole Classic

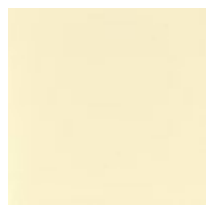
DIMENSIONS: 19.25W x 25D x 40H

Quite possibly the perfect dining chair, this graceful silhouettel features a shapely exterior crafted of mottled Anegre veneers and finished in a graceful Platinum Blonde finish. Comfortable yet confident, its elegantly tailored seat and inside back are upholstered in a luxurious neutral fabric that exudes glamour. Fashionable legs complete the ensemble and wear an Ivory Painted finish accented with metal ferrules in Champagne Gold.

FINISH:



Platinum
Blonde



Ivory

FABRIC:



2613-35CC