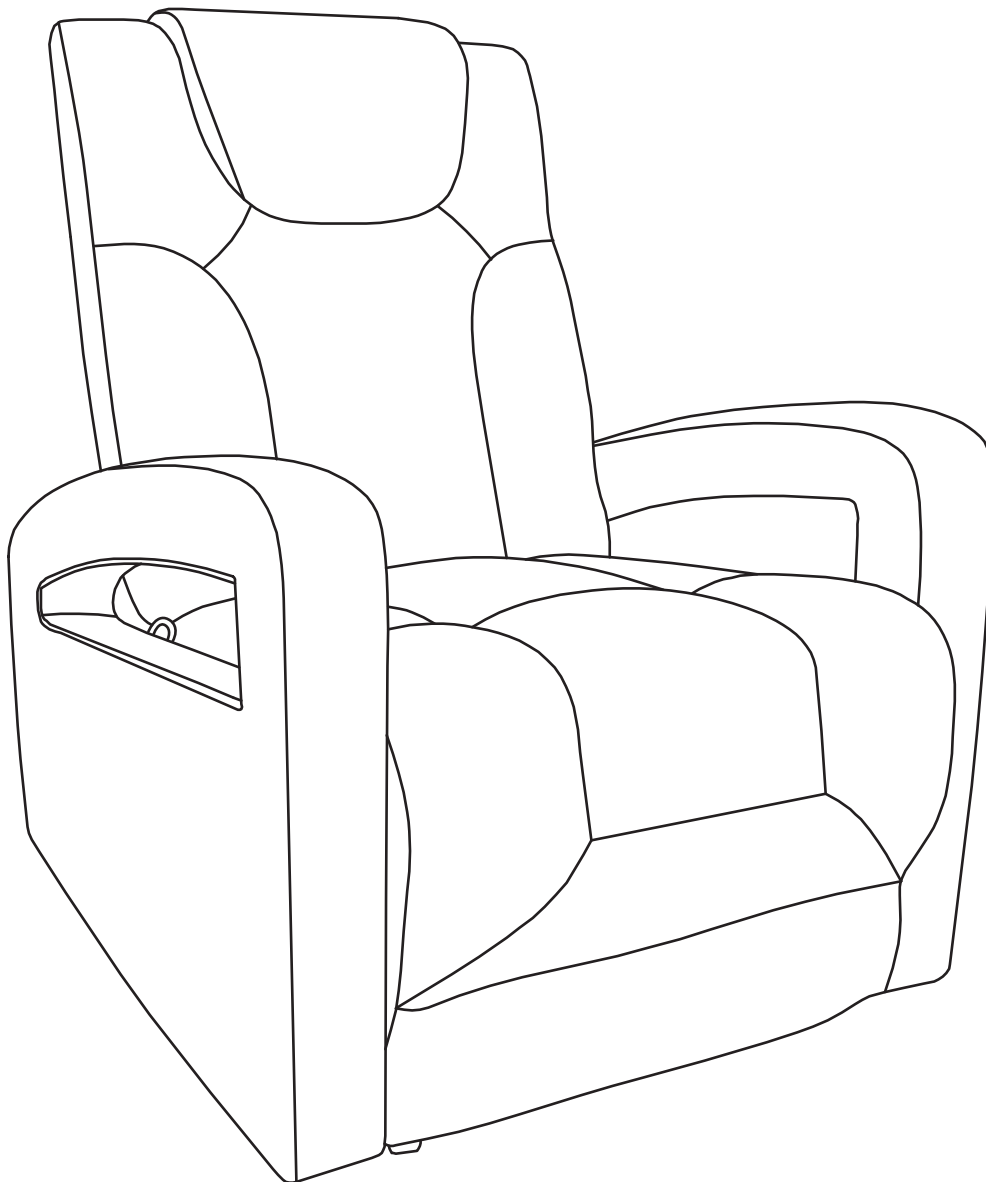


ASSEMBLY INSTRUCTIONS

SKU:VK-604



WARNING



Please read the instructions carefully and follow the assembly steps.

Do not tighten bolts or screws completely until all hardware is lined up and inserted into the holes.

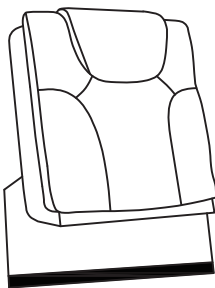
Do not over-tighten screws and bolts to avoid stripping the hardware or cracking the item.

Assemble your item on a flat, carpeted area, with plenty of space to work. This will prevent damage and scratches to your floors or the item while you're assembling the product.

Keep all components and packaging out of reach of children or animals to avoid risk of choking or suffocation.

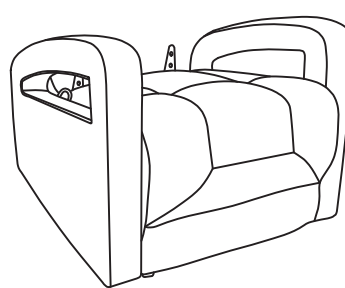
ASSEMBLY PARTS AND TOOL

A



Seat Back *1

B



Seat Base *1

ASSEMBLY INSTRUCTIONS

STEP 1:

A

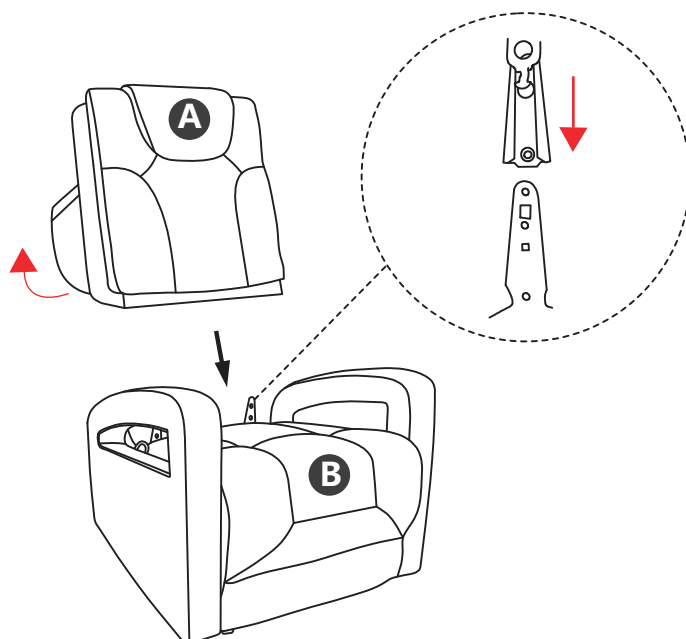


Seat Back *1

B



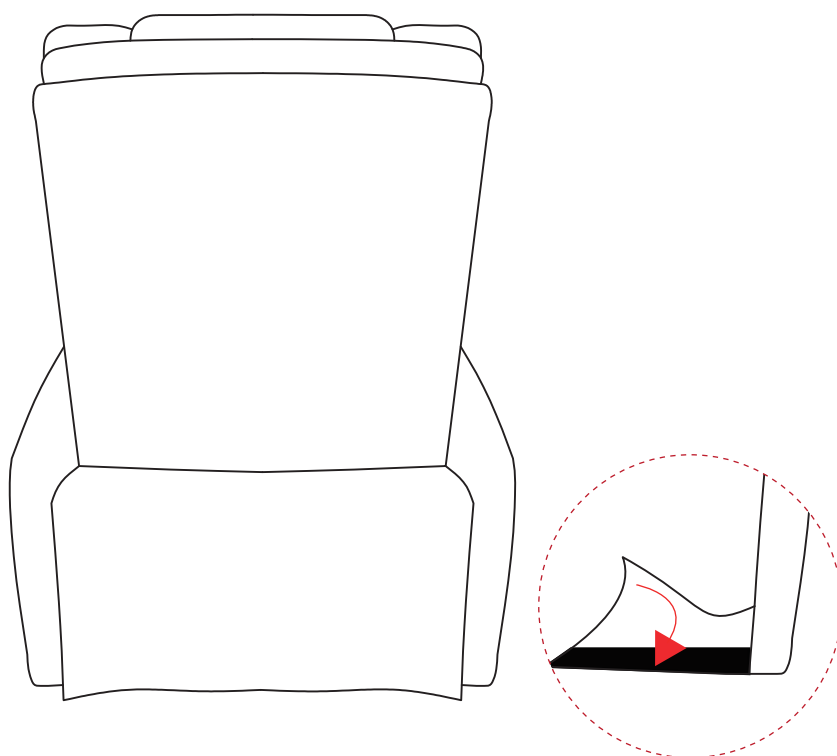
Seat Base *1



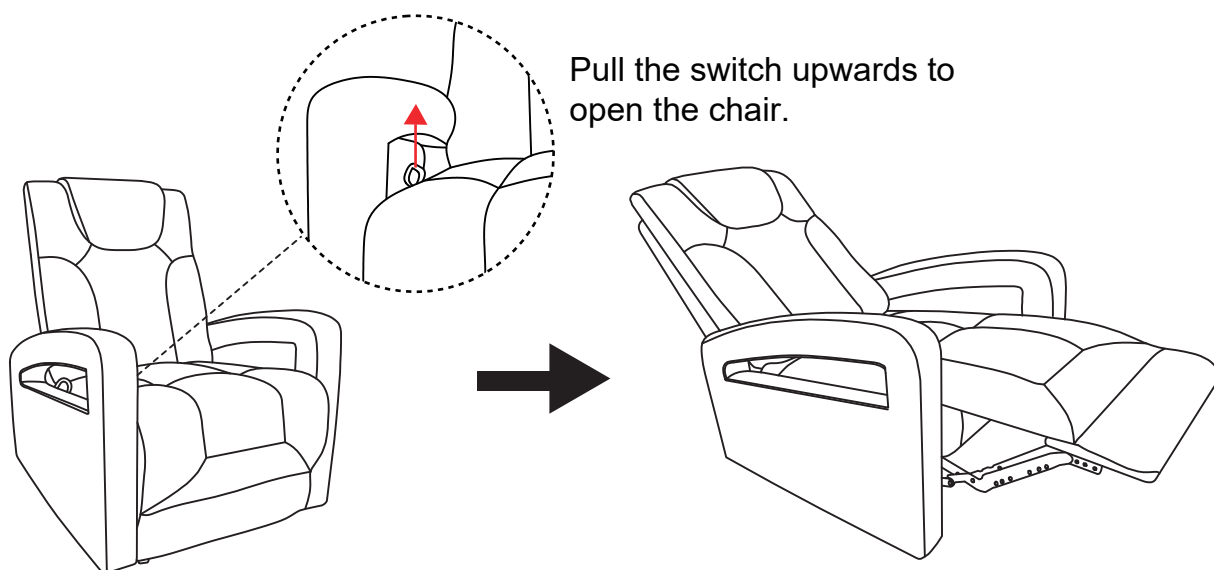
PLEASE MAKE SURE ALL THE PARTS ARE INCLUDED.

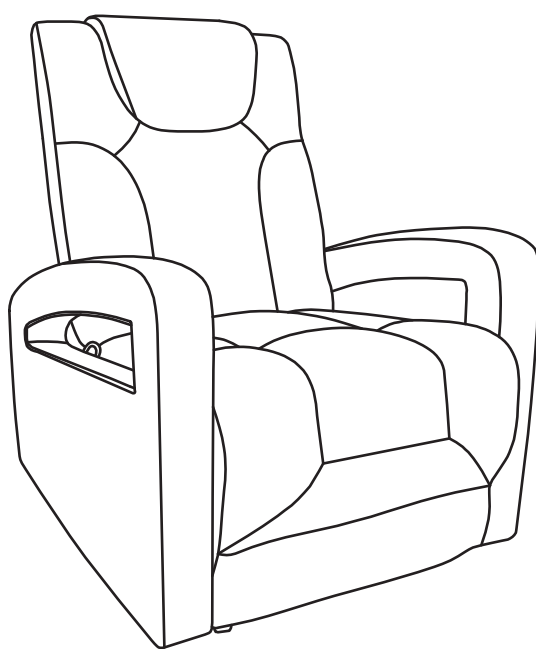
MISSING PARTS? cs@vknow-online.com

STEP 2:



STEP 3:





Your chair assembly is complete!

SAFETY INFORMATION

WEIGHT CAPACITY FOR SEATING: 300LBS



Sit in the center of the chair with your back against the backrest.



Do not sit at the front edge of the chair.



Do not stand on the chair.



Do not use the chair with more than one person.



Do not push the chair around when a person is sitting in it.



Do not push down on the backrest when a person is reclined.



Do not place all your weight on the backrest only.

CARING FOR YOUR ITEM

Indoor use only

Not contract grade.

Clean using a non-abrasive cloth and a mild cleaner.

Never use harsh chemicals, as they could damage the finish or integrity of the item.