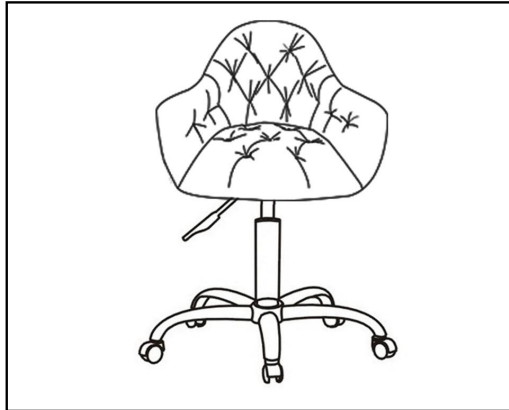


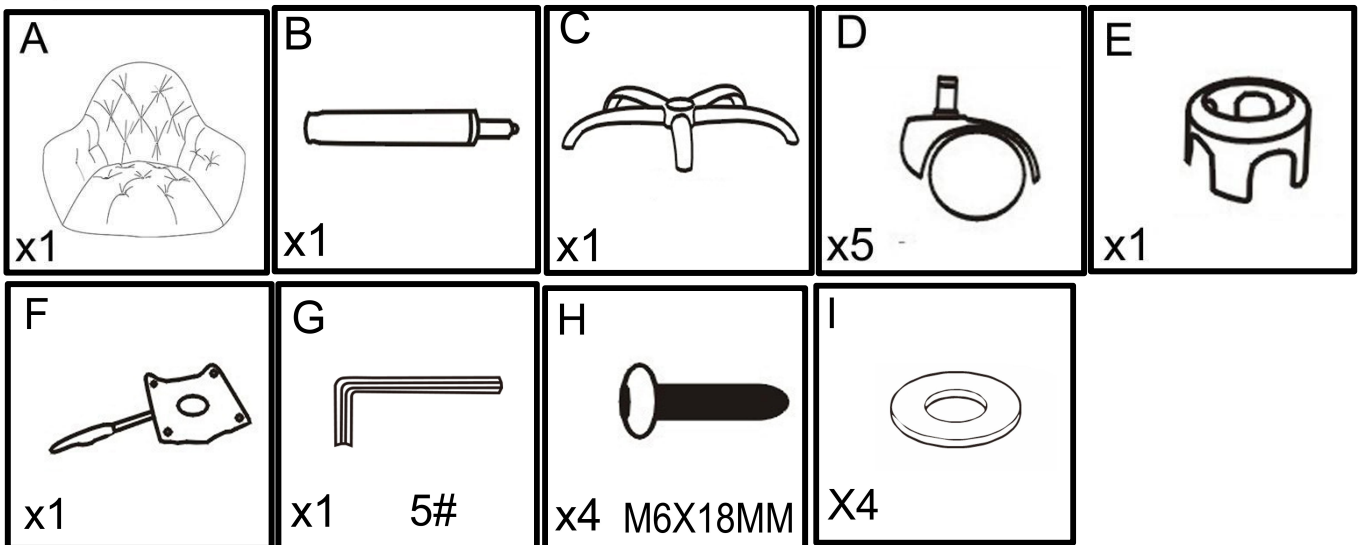
INSTRUCTION MANUEL ENCLOSED

INDOOR OFFICE CHAIR

INDOOR OFFICE CHAIR ASSEMBLY INSTRUCTION



Part	DESCRIPTION	Quantity
<i>PARTS</i>		
A	Seat	1
B	Gas lift	1
C	Base	1
D	Wheel	5
E	Decorations	1
F	Chassis	1
<i>HARDWARE</i>		
G	Allen Key	1
H	Screws	4
I	Washer	4



PLEASE READ AND FOLLOW ALL SAFETY TIPS

GETTING STARTED

1. Before assembly, CAREFULLY use scissors or utility knife to cut and unwrap all parts. Make sure you do not discard the hardware.

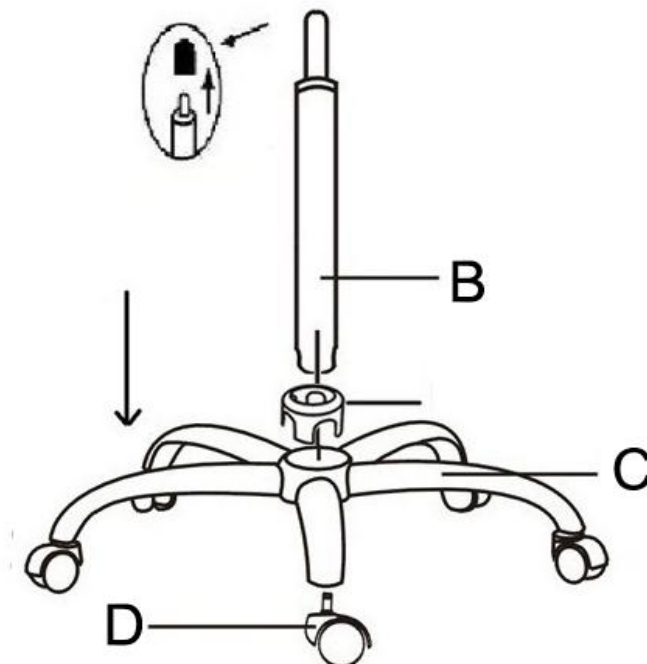
Warm Tips:

1. The plastic covers on some metal parts are just for product protection. Please remove it before assembly.
2. Please follow the sequence of AI during assembly.
3. Do not tighten the screws until all of them are in right positions.

1.As shown in the picture.

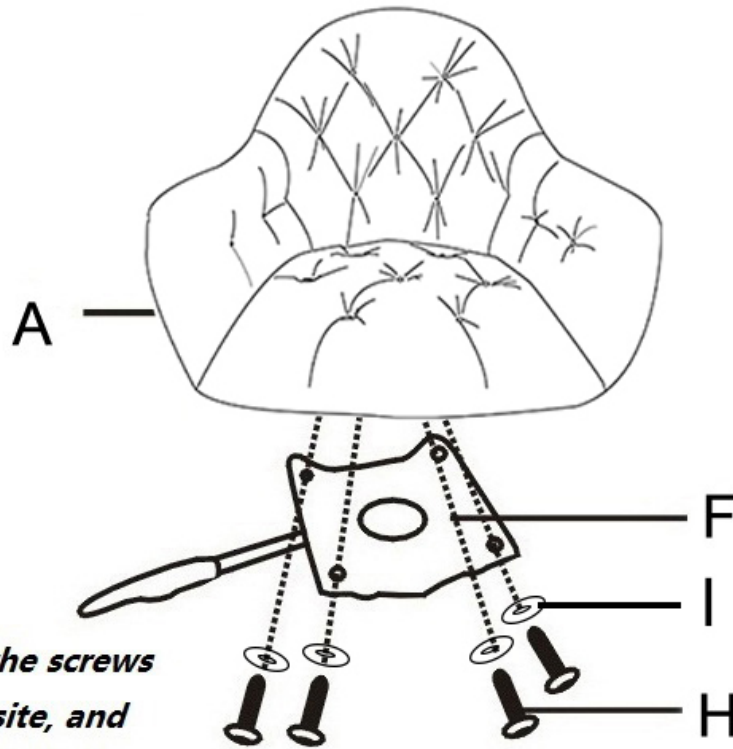
1

Take off the gas lift cap first



2.As shown in the picture.

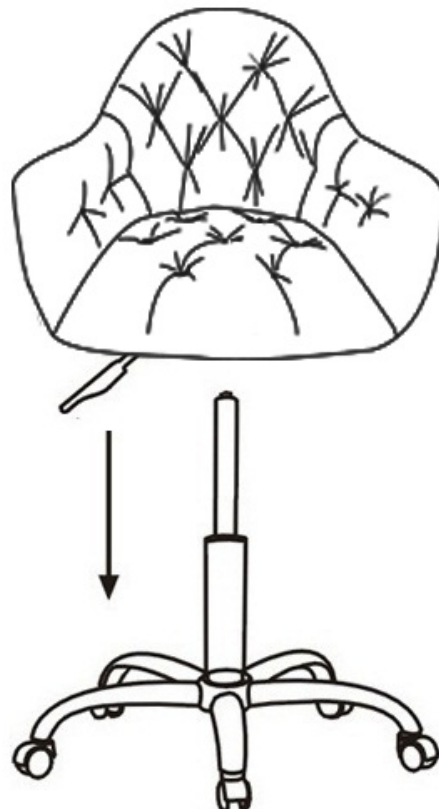
2

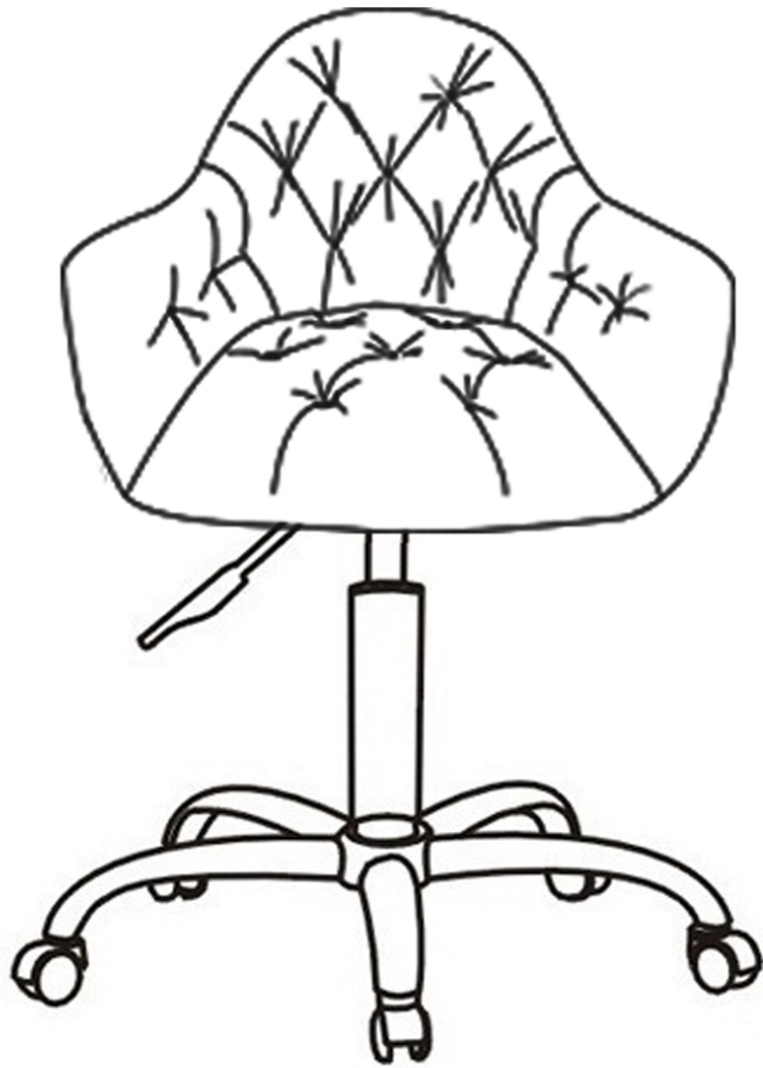


*Note: Put all the screws
into the hole site, and
then tighten them.*

Do not tighten one by one

3





Till now you have finished the whole assembly and enjoy your furniture!