



NGALA
TRADING

TURTLE DOME LIGHT

The Turtle Dome Light is inspired by both nature and human design. The motif is drawn from the beautiful, intricate patterning of a turtle's shell while the dome shape mirrors a classic architectural and decorative form that is simultaneously strong and delicate. The carefully crafted patterns create a pleasing play of light-shadow and texture. As with much of Xavier's work the Turtle Dome Light is a playful hybrid of the geometric and the organic.

Conceived and handmade in the Durban, South Africa studio of Xavier Clarisse, each piece is crafted from quality, locally sourced, vegetable tanned leather. A stainless steel framework supports the three-dimensional hanging sculpture.

All hard-wired lighting is UL-listed for dry locations. Not suitable for outdoor use.

MATERIALS AND CONSTRUCTION

Hand embossed leather
Polished stainless steel

DIMENSIONS

37" Dia. x 16" H

CEILING CANOPY

4.7" Dia.
Black or White

CORD

1 x 9' L
Black or White Cotton Covered
SVT-B Flexible Electrical Wire
3 x AWG18: 3 conductors, 18 gauge

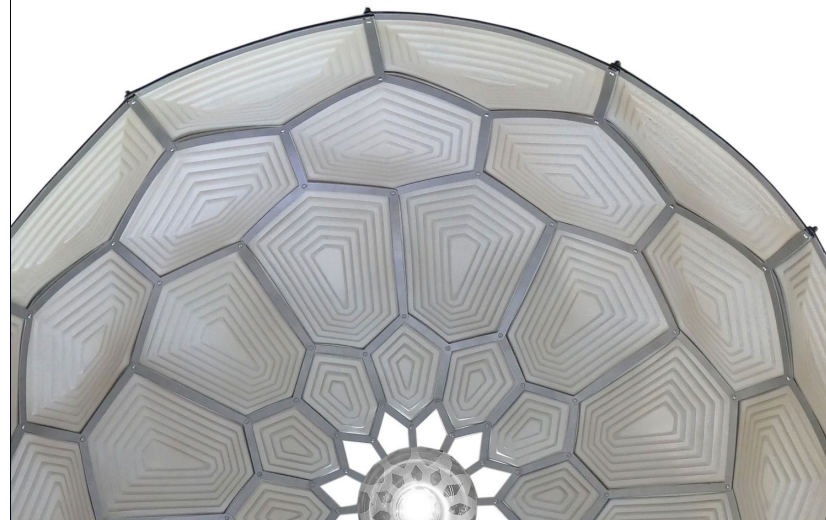
WEIGHT

Approximately 14 LBS

BULB SPECIFICATION (BULB NOT INCLUDED)

Type: LED only
Base: E26 (Standard Edison)
MAX Wattage per bulb: 7w LED
Number of bulbs required: 1

MANUFACTURER





LEATHER COLORS



Black



Bone



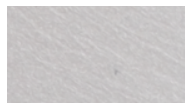
Grey



Pearl



Gold



Silver



Leaf

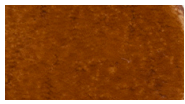


Teal

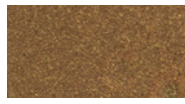
VINTAGE LEATHER COLORS



Pewter



Tan



Bronze

CANOPY / CORD COLORS



Black



White

Clarisse Design uses only full-grain, vegetable tanned leathers in the production of their handcrafted designs. This specific type of leather has been chosen for its physical attributes of thickness, durability and the ability to be shaped.

A full-grain piece of leather has the entire grain visible on one side. Except for the removal of the hair, the surface remains untouched. Natural imperfections like scars, blemishes, insect bites, branding and stretch marks may be present in this leather. These natural imperfections should not be regarded as defects and are a feature of this first-quality leather.

NGALATRADING.COM

SPECS

36.8" DIA X 15.8" H

TOTAL HEIGHT: 124.8"

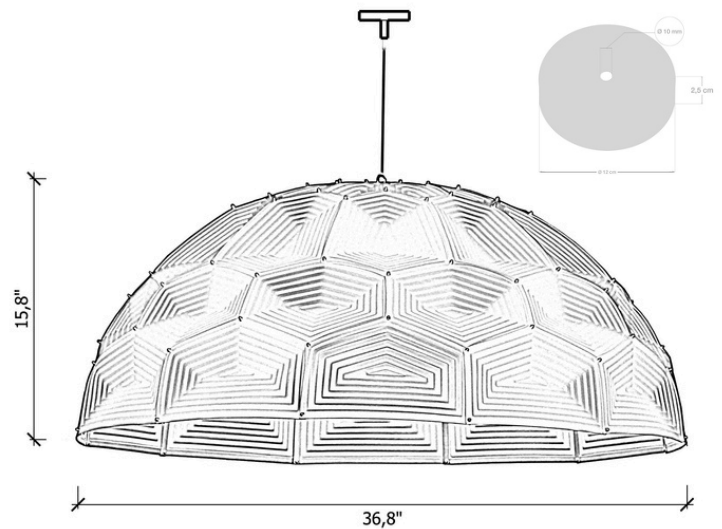
15.8" (FIXTURE) +

108" (CABLE)** +

1" (CEILING CANOPY)

** CABLE CAN BE SHORTENED DURING INSTALLATION **

MINIMUM HANG HEIGHT: 17.8"



SHIPPING AND DELIVERY

- Each pendant is fully assembled in a single box - ships UPS Ground
- Back-order & Made-to-Order items available for domestic shipping 12-14 weeks from receipt of deposit

INSTALLATION AND CARE

- Chandelier arrives ready to hang hardwired into standard 4" x 4" junction box in ceiling
- Leather is a natural product and is therefore susceptible to fading if exposed to direct sunlight or moisture
- Refer to installation instructions for full details