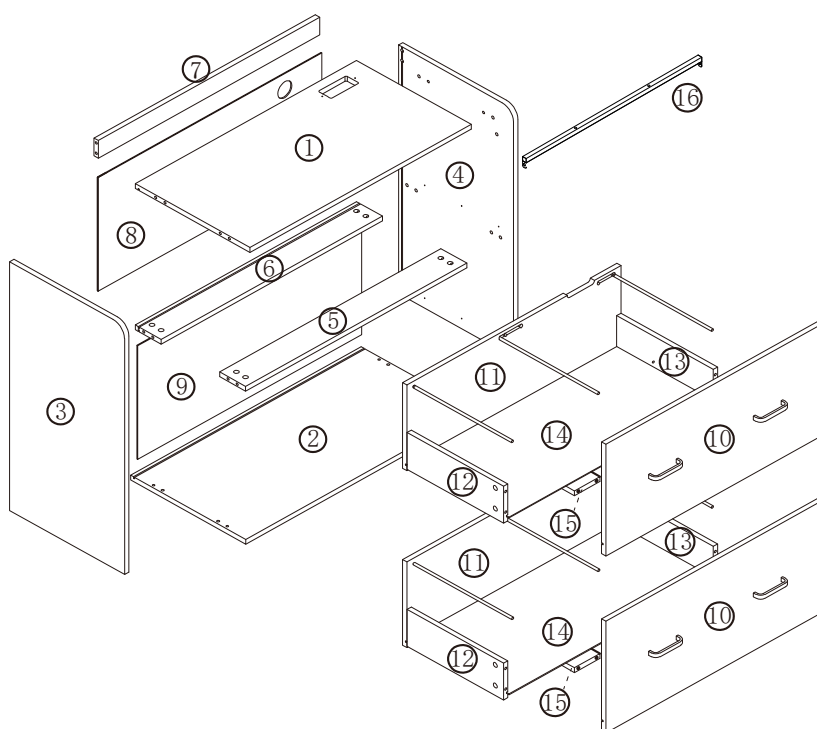
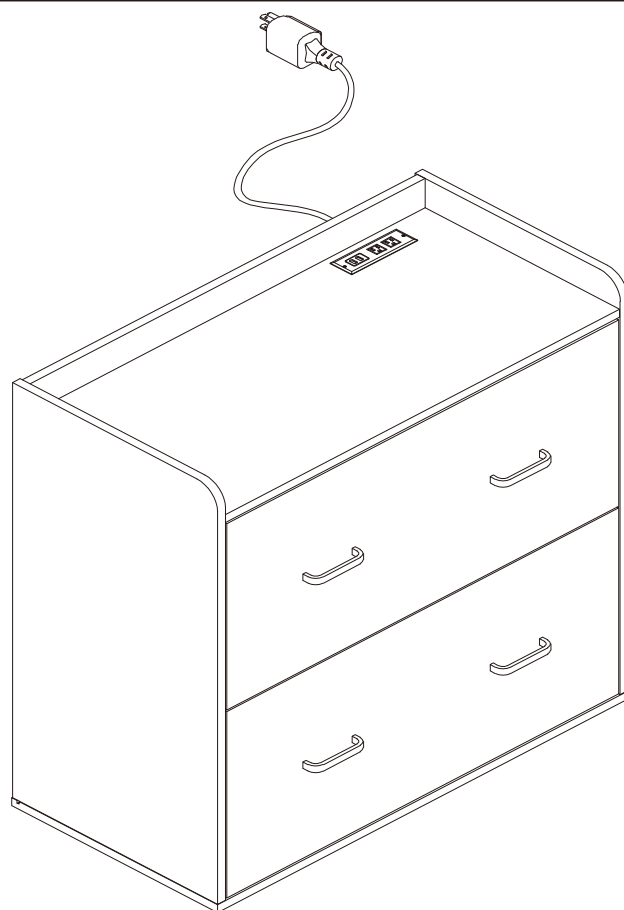
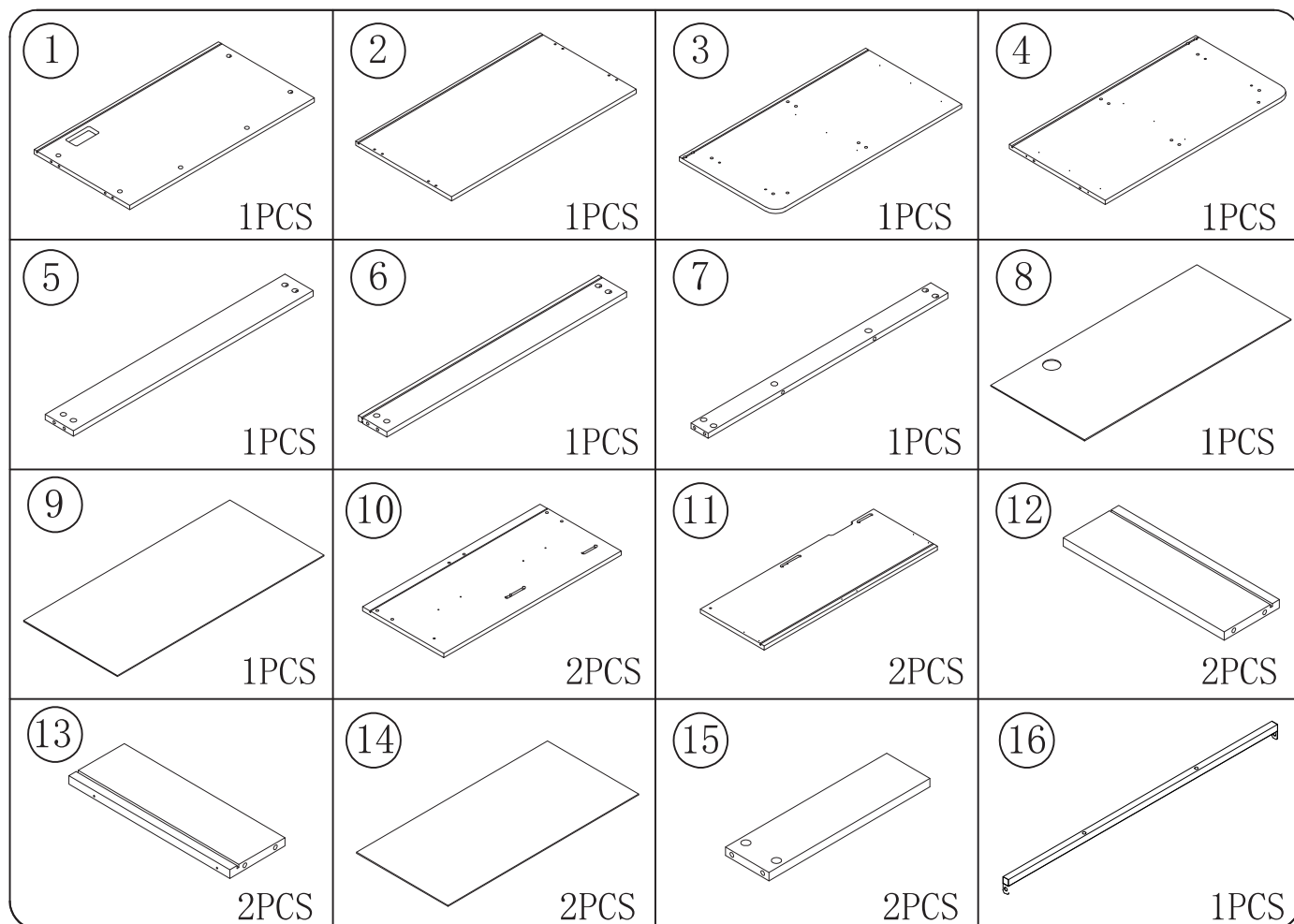

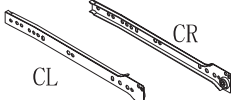

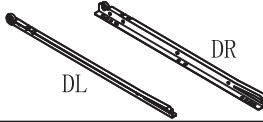


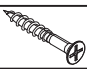




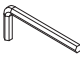

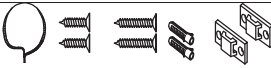
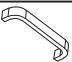






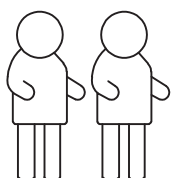
IMPORTANT, RETAIN FOR FUTURE REFERENCE: READ CAREFULLY



Installation Instructions



NO.	PICTURE	SIZE	QTY	NO.	PICTURE	SIZE	QTY
A		ST6X48	4	K	 CR CL	350MM	2/2
B	 ⊕	ST3X12	22	L	 DR DL	350MM	2/2
C	 ⊕	ST3X16	12	M			6
D	 ⊕	ST4X40	12	N			1
E		M6X32	30	O			30
F		Ø15	30	P			1
G		Ø8X30	8	Q			2
H			4	R		M6X10	2
I		M4X18	8	S		M6X25	2
J			12				

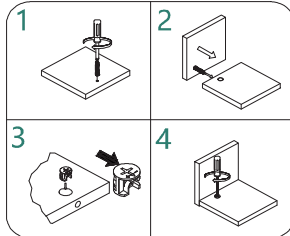
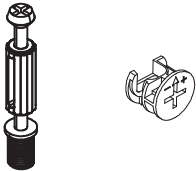


It takes at least two people
to assemble the product

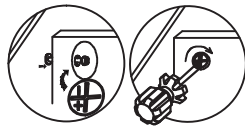
Installation Instructions

Cam Lock Fastening System

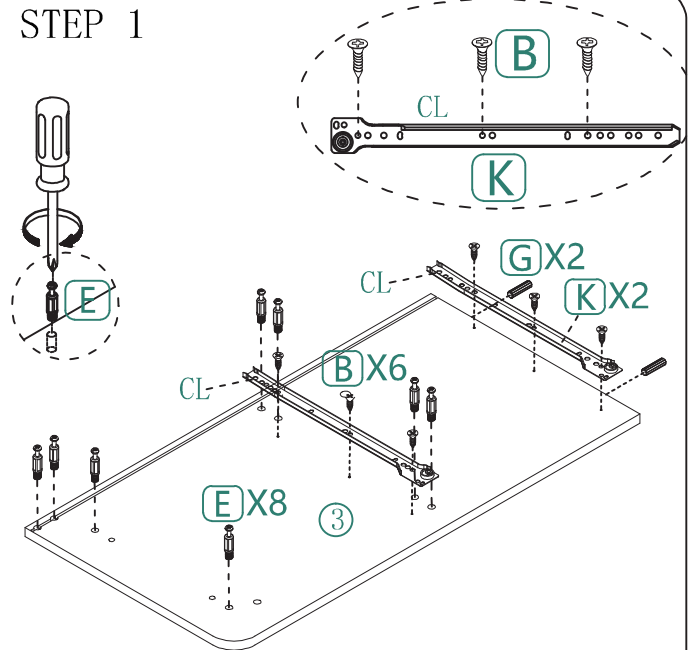
This Cam Lock Fastening System will be used throughout the assembly process



Another Viewpoint



STEP 1



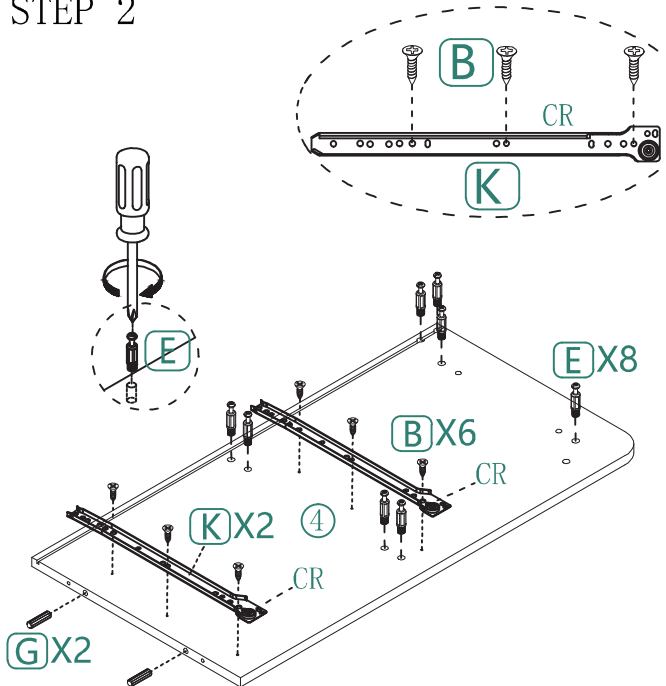
(B) = 6X

(E) = 8X

(G) = 2X

(K) = 2X CL

STEP 2



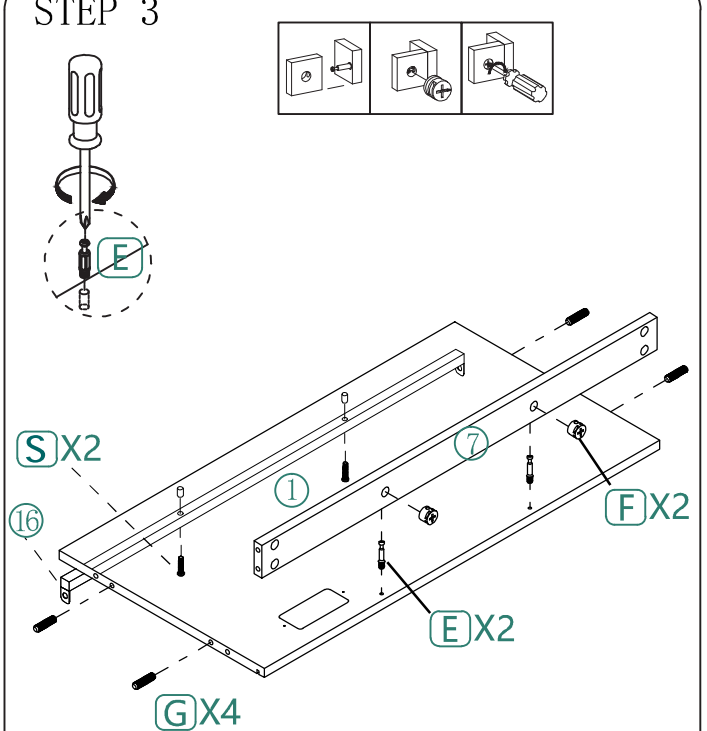
(B) = 6X

(E) = 8X

(G) = 2X

(K) = 2X CR

STEP 3



(S) = 2X

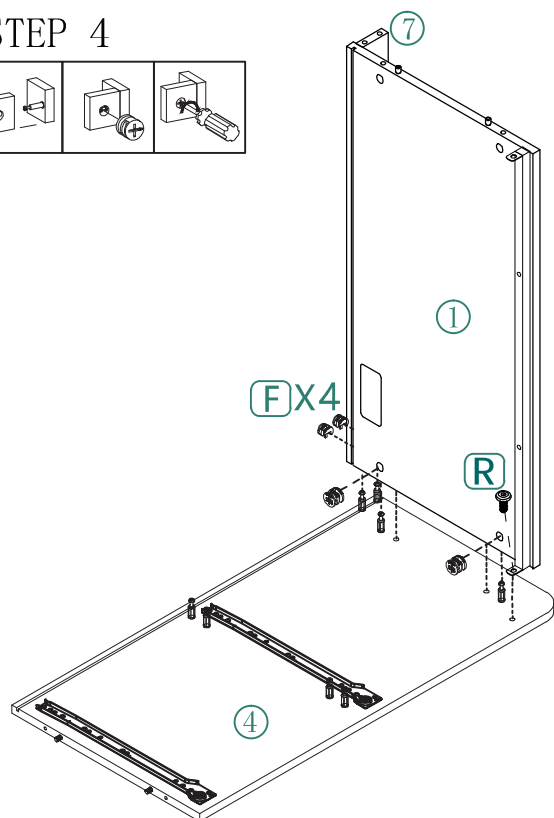
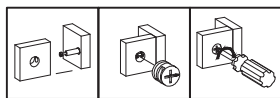
(E) = 2X

(G) = 4X

(F) = 2X

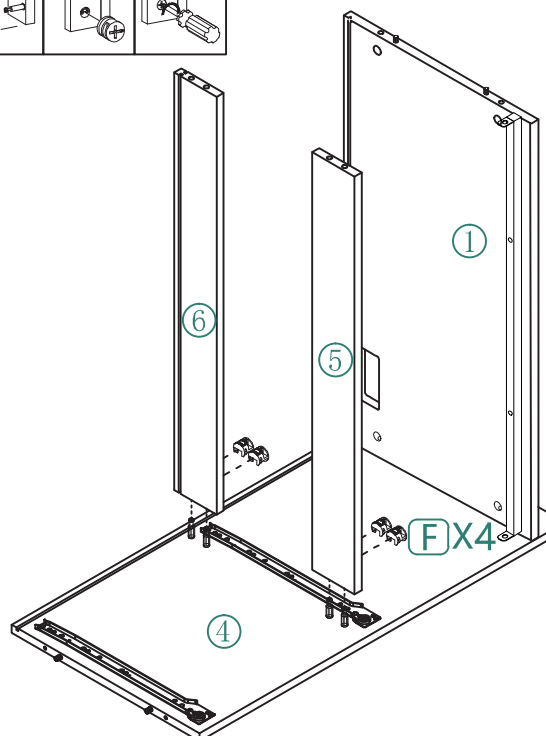
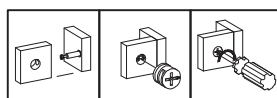
Installation Instructions

STEP 4



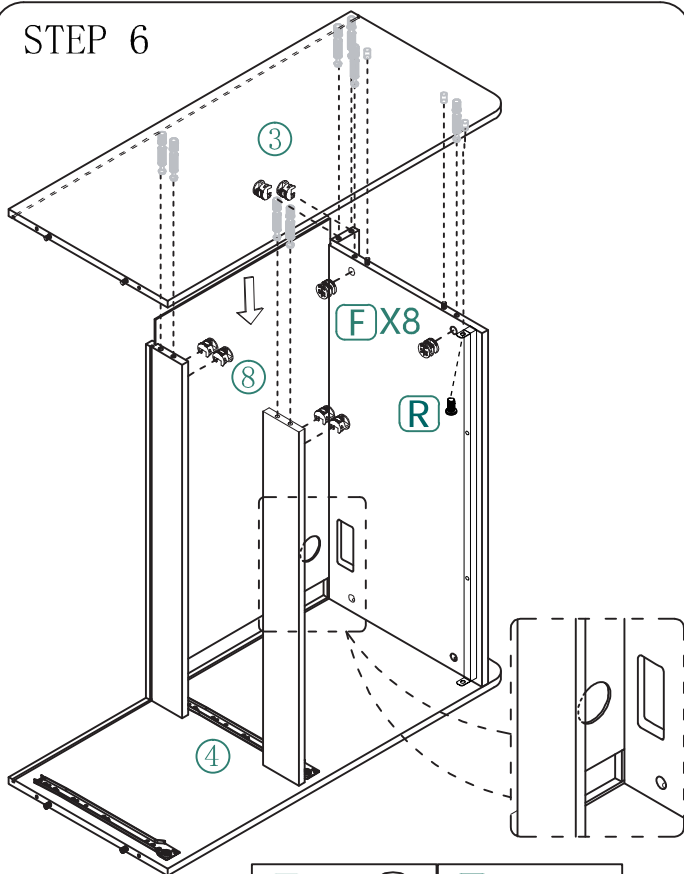
F = 4X **R** = 1X

STEP 5



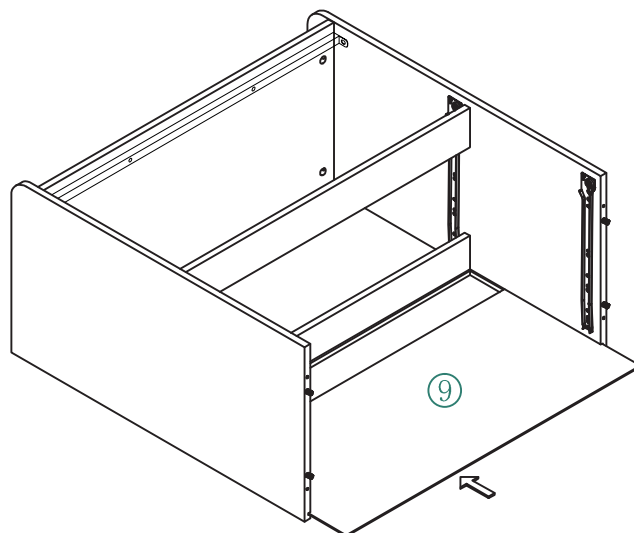
F = 4X

STEP 6



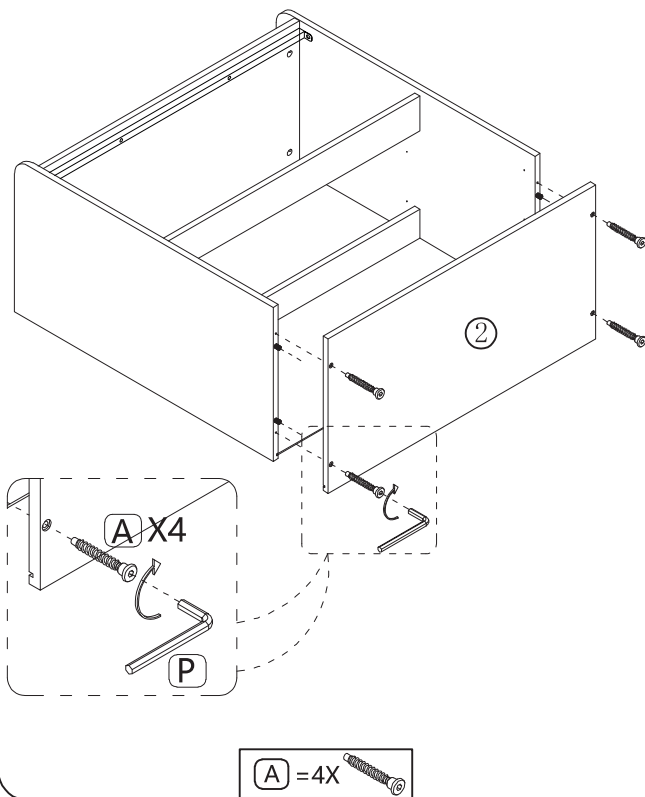
F = 8X **R** = 1X

STEP 7

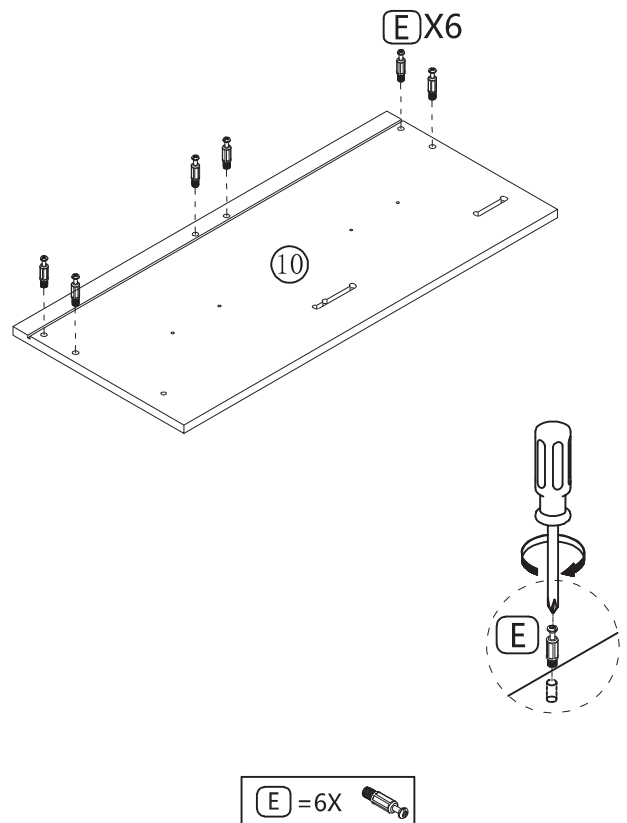


Installation Instructions

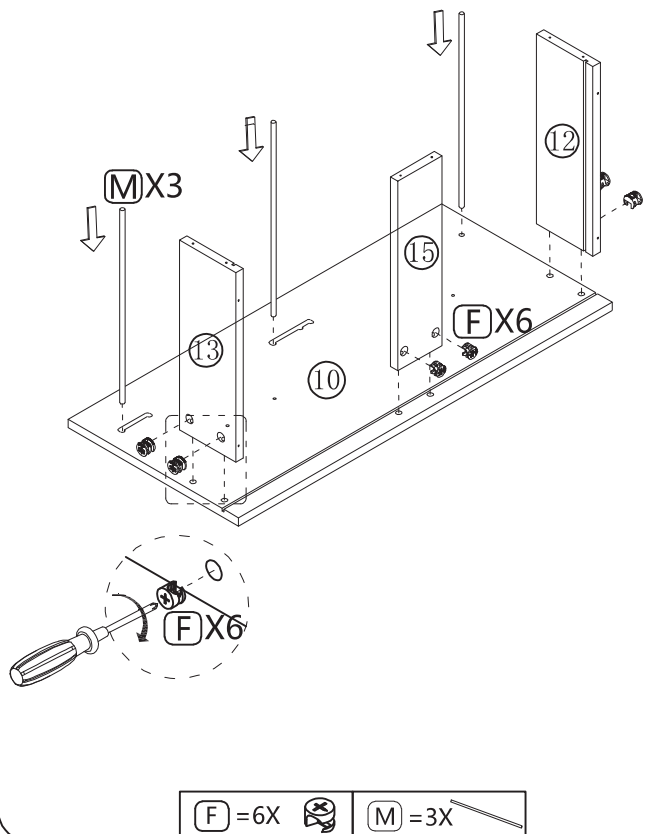
STEP 8



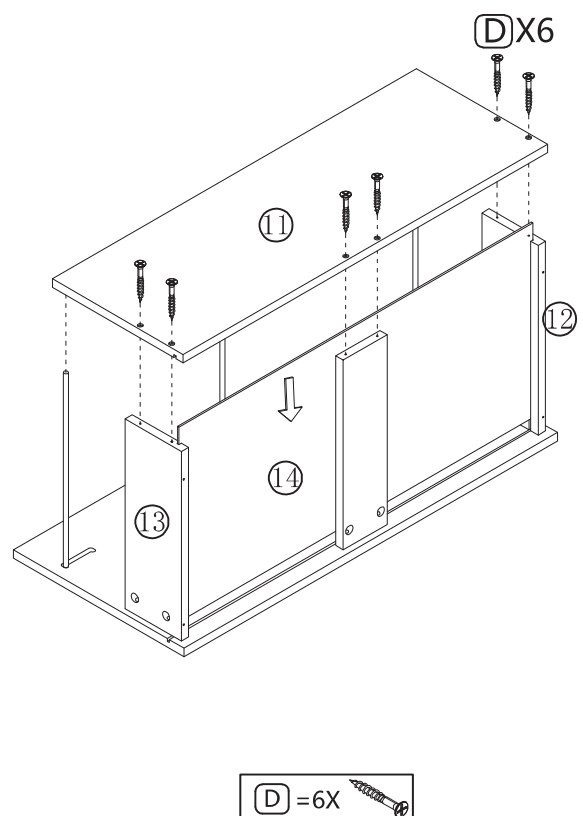
STEP 9



STEP 10

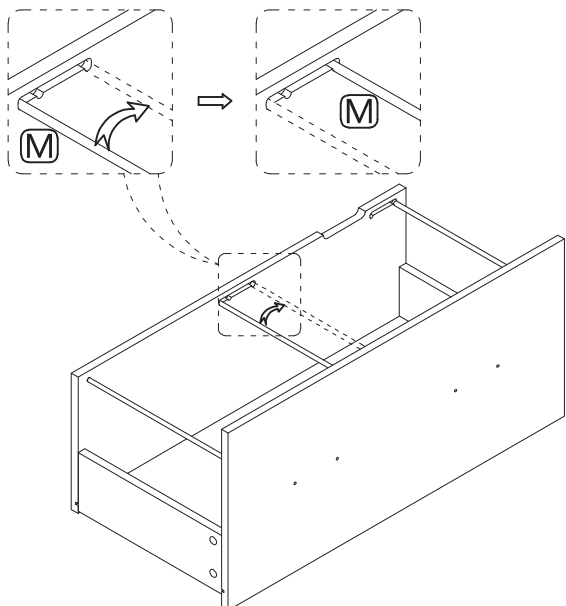


STEP 11

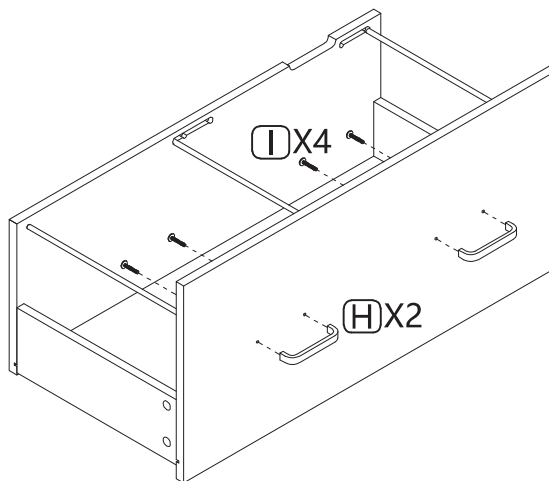


Installation Instructions

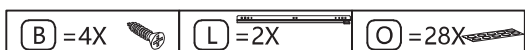
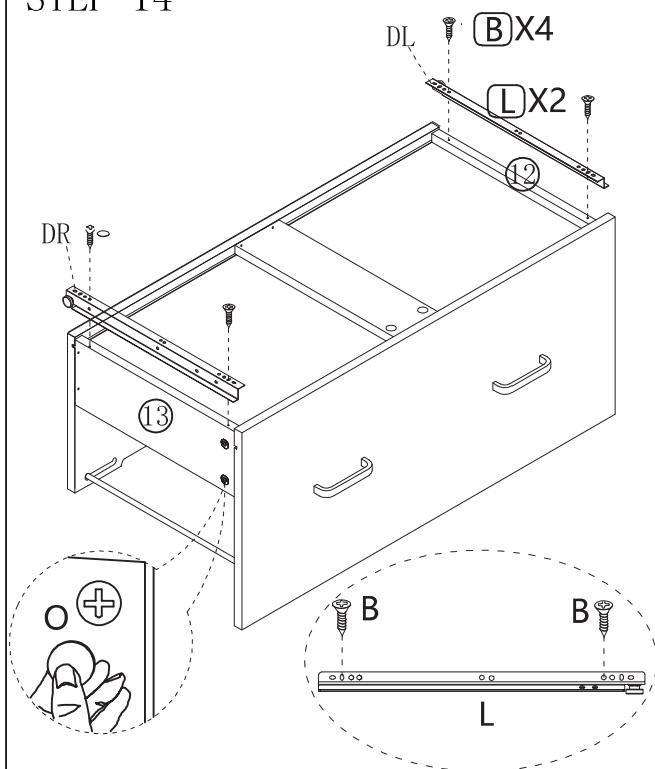
STEP 12



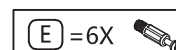
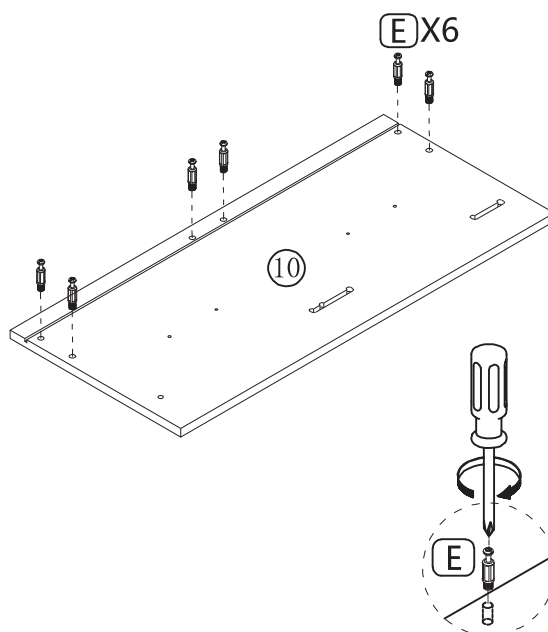
STEP 13



STEP 14

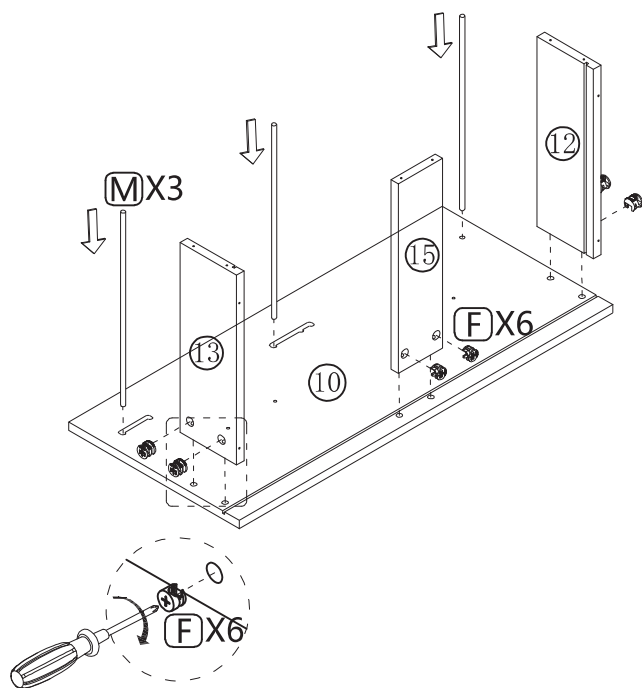


STEP 15



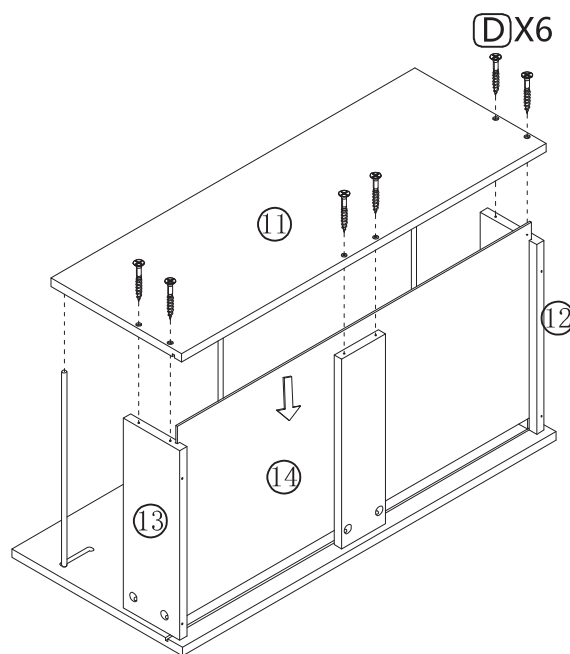
Installation Instructions

STEP 16



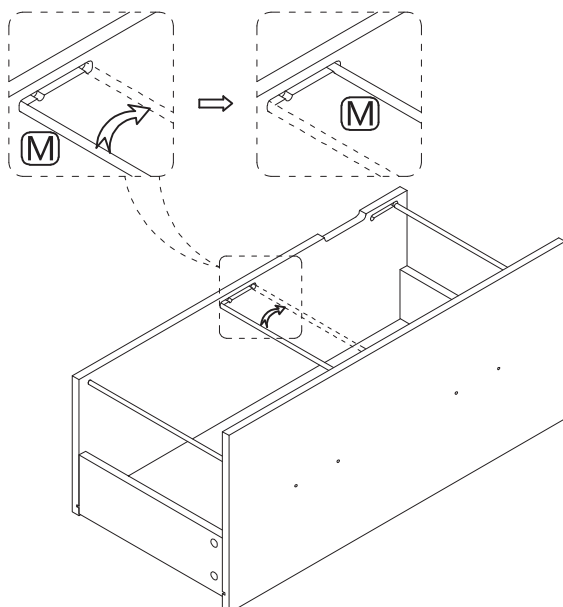
F = 6X M = 3X

STEP 17

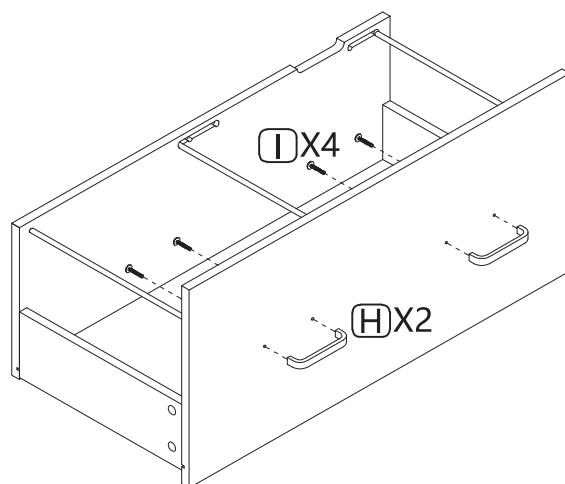


D = 6X

STEP 18



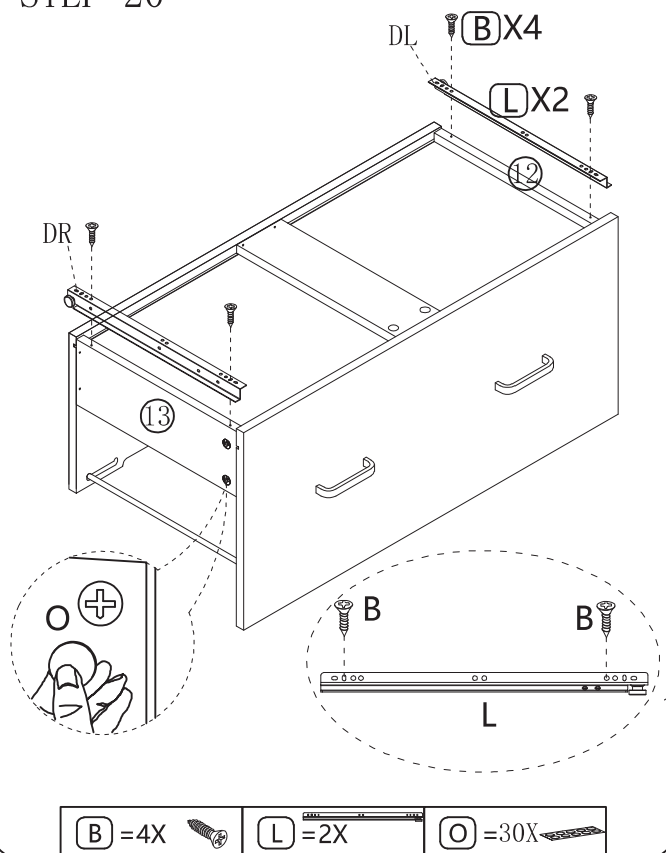
STEP 19



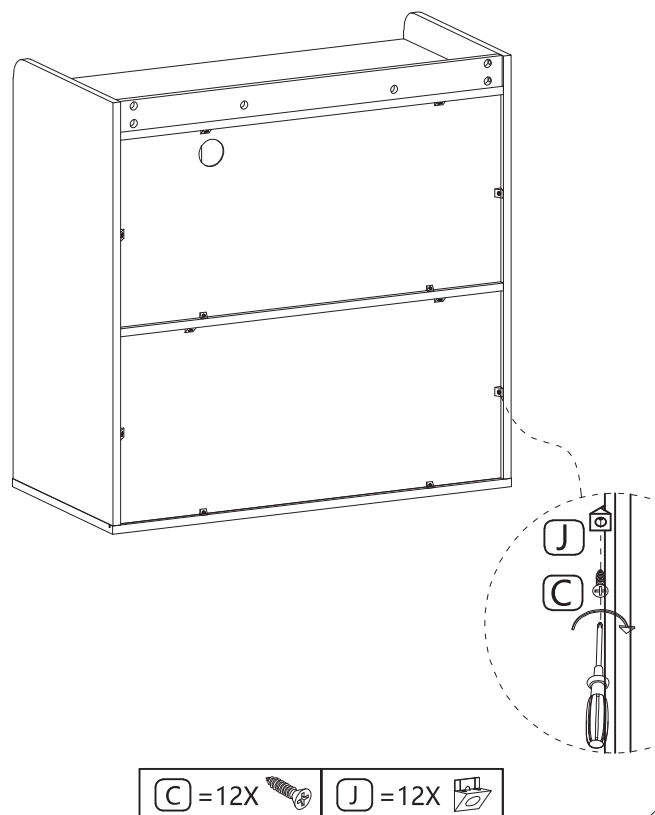
H = 2X I = 4X

Installation Instructions

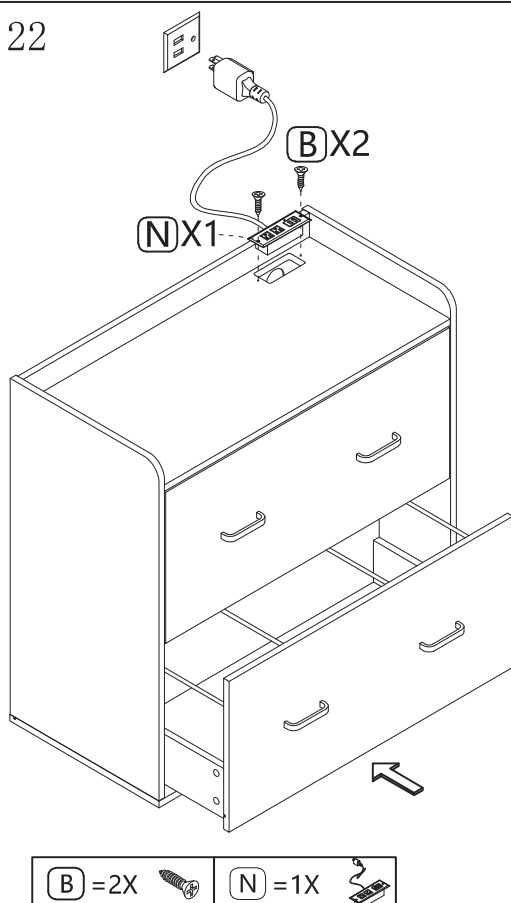
STEP 20



STEP 21



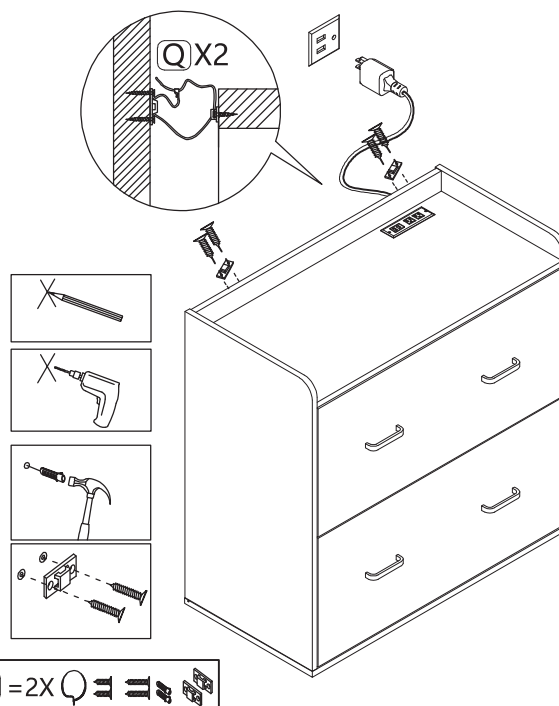
STEP 22



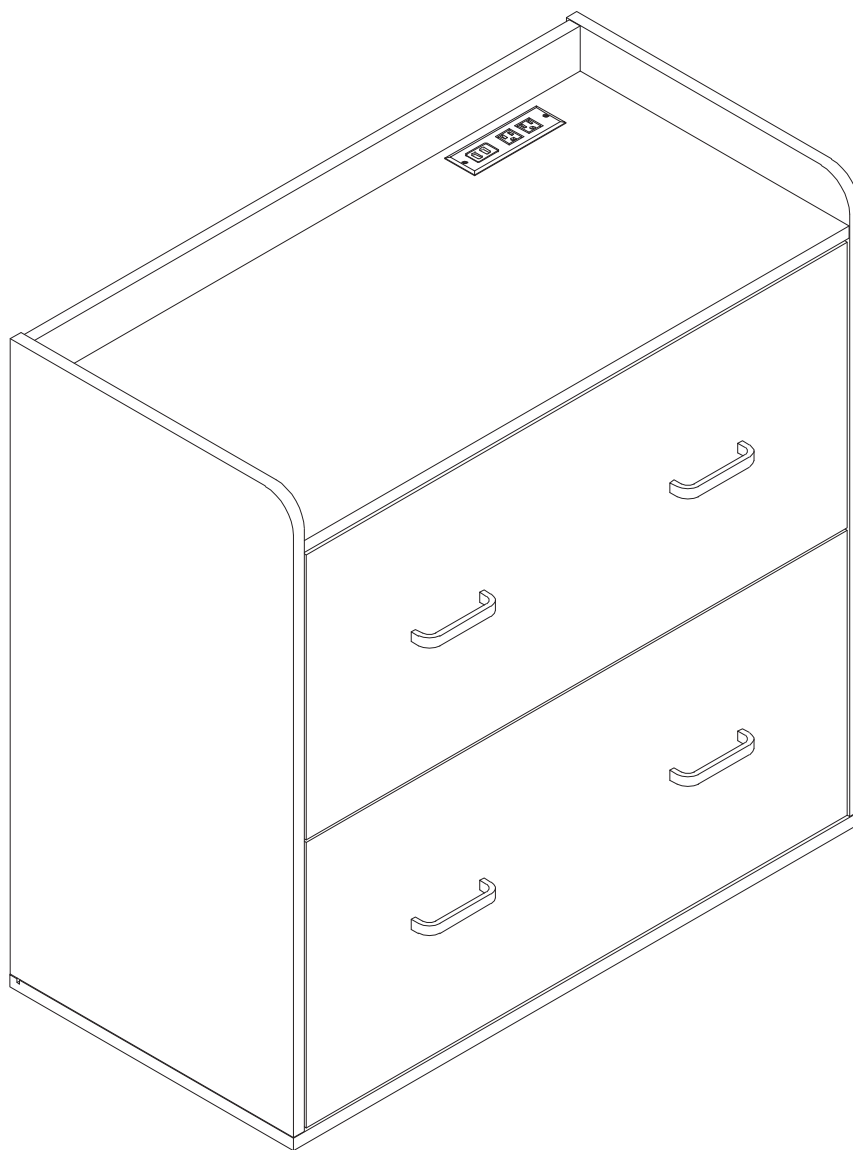
STEP 23



Attention: For safety and stability, we suggest you have to secure the anti-tip accessories to the wall to prevent tipping, injury, and property damage.



Installation Instructions



Installation Completed