

ASSEMBLY INSTRUCTIONS

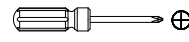
Coffee Table

ASSEMBLY
REQUIREMENTS

2-Person
Assembly

45 Minutes
Assembly
Time
(Approximate)

Tools Required
(Not Provided)



Phillips Screwdriver



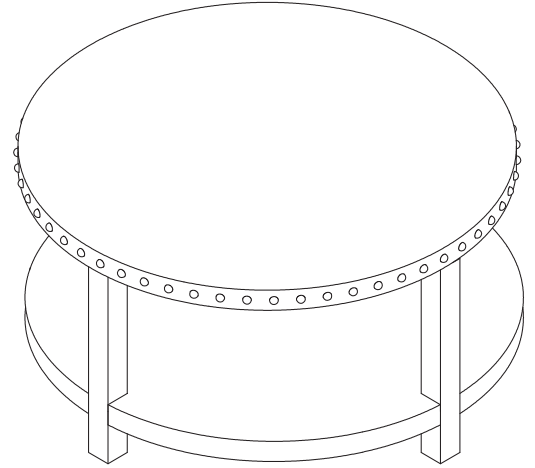
Flat Screwdriver



Mallet

Thank you for purchasing our product!

Please refer and use this assembly instruction to assemble the product. Contact our customer service department in case there are any missing or damage parts or hardware. Replacement parts are normally shipped within 2 or 3 days.



ASSEMBLY PREPARATION

1. Remove all packaging materials, staples and packing straps from the carton.
2. Refer to Parts List and Hardware List, and ensure parts and hardware are complete before assembly.
3. Contact customer service for missing parts.
4. Place all wooden parts on a clean, flat and soft surface (e.g. carpet or rug) to prevent parts from getting scratched.

SAFETY PRECAUTION

1. KEEP ALL HARDWARE PARTS OUT OF REACH OF CHILDREN.
2. DISPOSE PLASTIC PACKAGING MATERIAL IMMEDIATELY TO AVOID ANY RISK OF SUFFOCATION TO CHILDREN AND ANIMALS.

TIPS FOR ASSEMBLY

1. Allow ample room for assembly and in close proximity to where product will be placed.
2. Assemble the product on a surface that does not scratch or damage the exterior gloss and finish of the furniture.
3. Identify all of the parts, hardware and quantities required for each step.
4. During assembly, do not over-tighten any fittings as this may cause damage.
5. DO NOT USE POWER TOOLS TO ASSEMBLE THIS PRODUCT.
6. Always place the product on a flat, level surface.
7. Do not sit or stand on the partially assembled product; only use the product for which it is intended.





CARE AND MAINTENANCE

- Use a slightly damp cloth to clean the product. Do not use bleach or abrasive cleaning material.
- Check all the fittings periodically and re-tighten as necessary. Do not use the product if any of the parts is damaged or broken.
- Never allow any kind of liquid to remain on your furniture. Absorption can cause wood to warp or delaminate.
- Do not place hot items (e.g. hot drinks) directly onto the wood surface.
- Do not drag and/or pull the furniture.

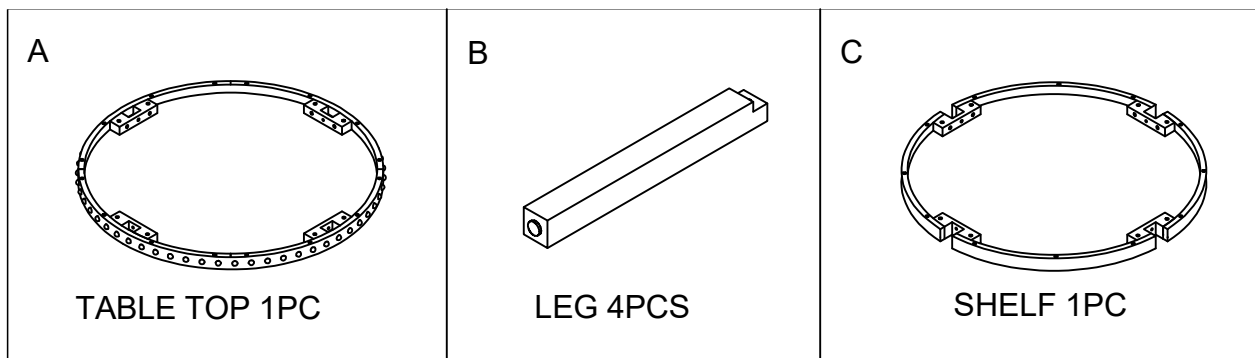
This product is for indoor and household use only - not for commercial use.

ASSEMBLY INSTRUCTIONS

HARDWARE LIST

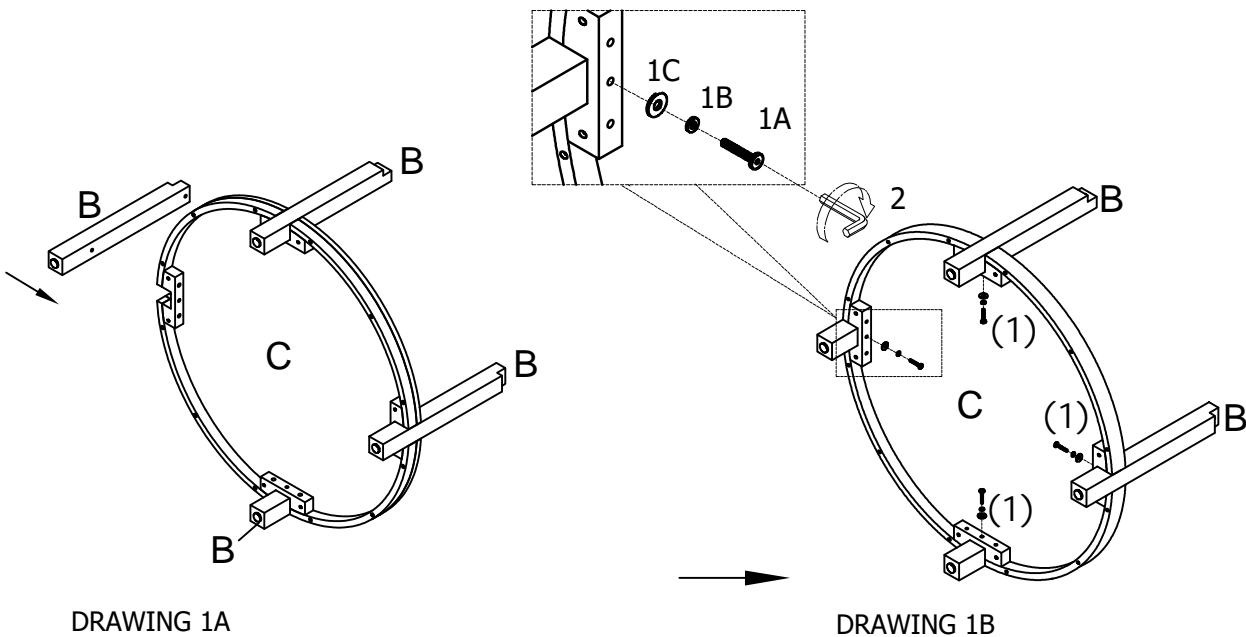
Item	Description	Part	Qty
1A	Bolt		12
1B	Spring Washer		12
1C	Flat Washer		12
2	Allen Key		1

PARTS LIST



NOTE: THE BOTTOM SIDE OF THE TABLE TOP AND SHELF IS INDICATED WITH A STICKER.

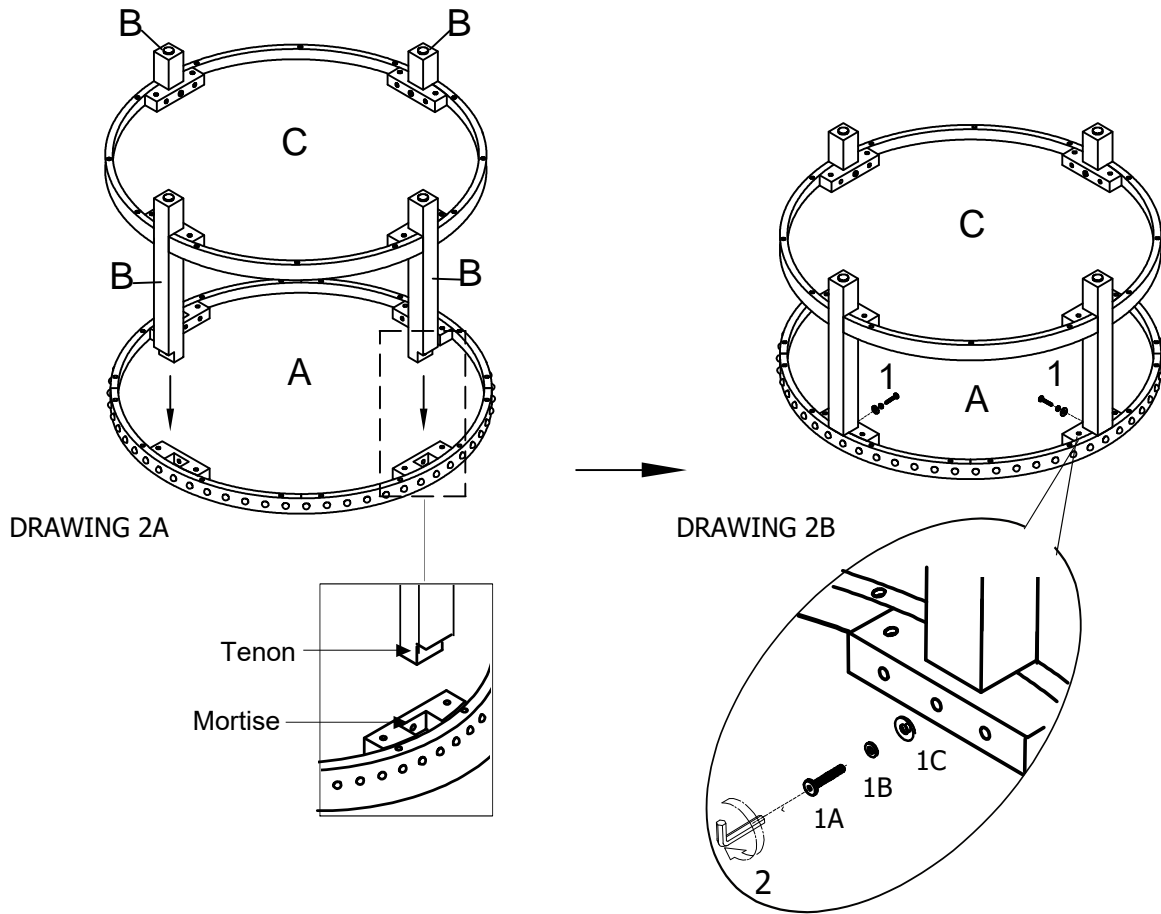
STEP 1 - ASSEMBLE LEG AND SHELF



- Place the parts on a material that does not scratch or damage the parts.
- Refer to Drawing 1A - Fit each Leg (B) to attach to Shelf (C) and align the bolt hole on (B) to the respective bolt hole on (C).
- Refer to Drawing 1B - Use Bolt (1A) fitted with Spring Washer (1B) and Flat Washer (1C) to fasten (B) to (C). Use Allen Key (2) to drive (1A). Do not tighten (1) completely at this time.

ASSEMBLY INSTRUCTIONS

STEP 2 - INSTALL TABLE TOP



- Place Table Top (A) bottom-side up on a material that does not scratch or damage the part.
- Refer to Drawing 2A - Insert tenon-end of Leg (B) to fit into the mortise on (A).
- Refer to Drawing 2B - Use Bolt (1A) fitted with Spring Washer (1B) and Flat Washer (1C) to fasten (B) to (A). Use Allen Key (2) to drive (1A). Do not tighten (1A) completely at this time.
- Check and adjust Shelf (C) gently to ensure it is level and even, and then tighten Bolt (1A) on Shelf (C) completely. Do not over-tighten the bolts.
Next, tighten Bolt (1A) on Table Top (A) completely. Do not over-tighten the bolts.
- Set the table right-side up. The assembly of the table is complete.

