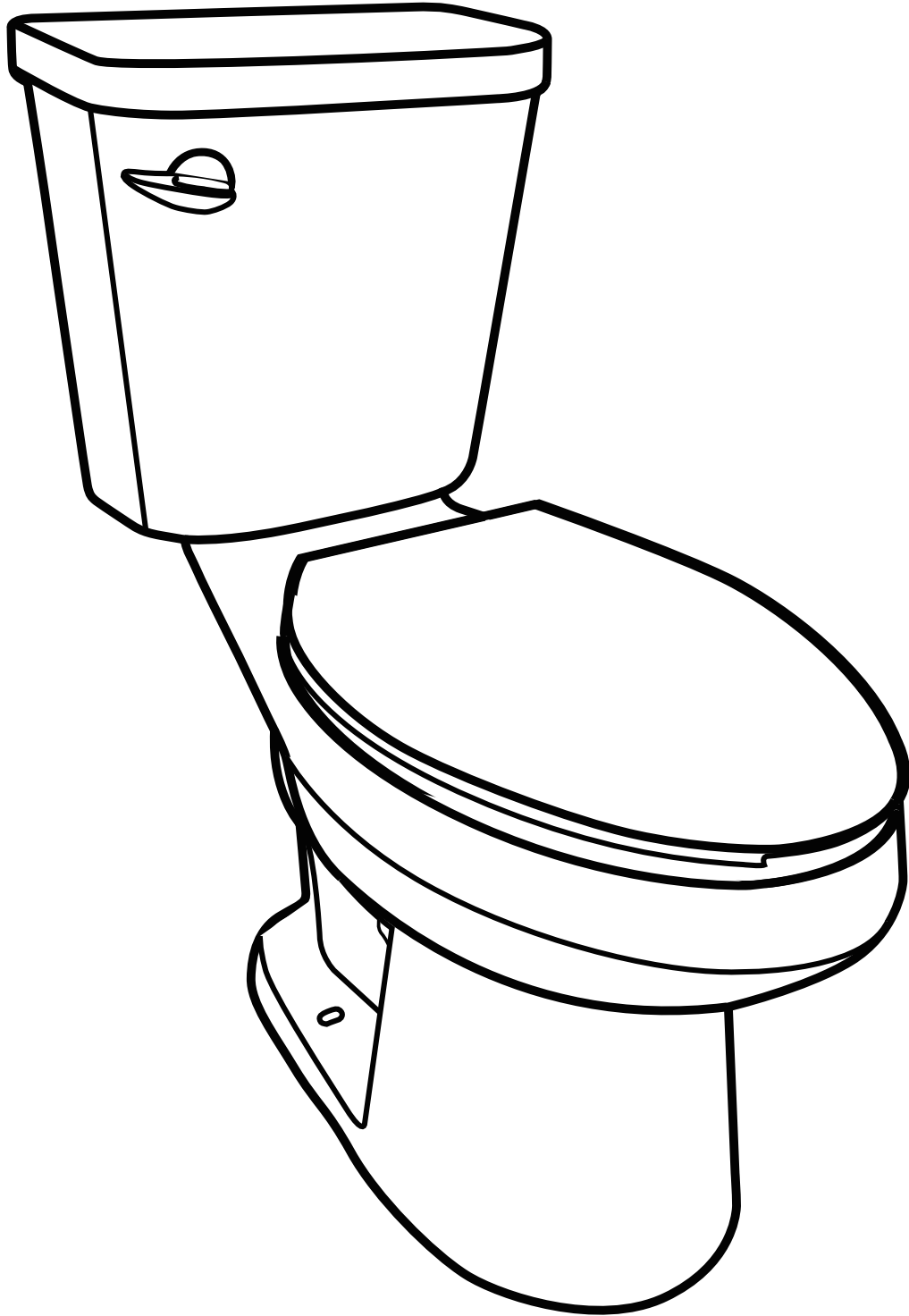


Two-Piece Toilet

Installation Instruction



THANK YOU!

Dear Valued Customer,

Thank you for choosing our ceramic Two-Piece Toilet. We hope our products can improve the quality of your life.

As a valued customer, your comments and opinions are very important for us. If you have any concerns, questions, or comments, we hope that you could bring them to our attention.

Please keep the box and packaging materials until your product is completely installed.

If you have any questions or concerns, please contact us:

718-814-8826
tehometeam@hotmail.com

Sincerely
Service Team



Two-Piece Toilet Installation Instruction



Prior to Installation:

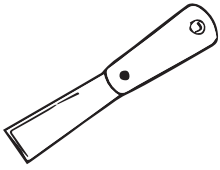
- Before installation, please make sure that the toilet without damaged during shipping.
- Observe all plumbing and building codes in accordance with your state and local requirements.
- Remove old toilet.
- Make sure mounting surface is CLEAN and LEVEL..

General Recommendations:

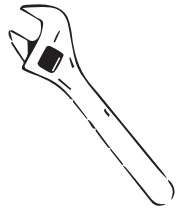
Please read installation and maintenance instructions thoroughly before installing the toilet.
Be sure to use proper tools and always wear proper personal safety accessories for your protection.

Two-Piece Toilet Installation Instruction

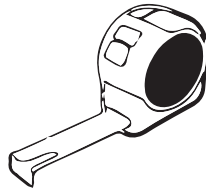
SUGGESTED TOOLS AND MATERIALS



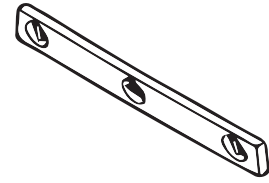
Putty Knife



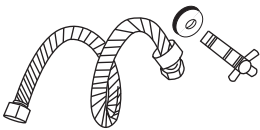
Wrench



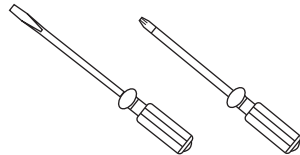
Tape Measure



Level



Water Supply Kit



Flat/Cross Head Screwdriver



Safety Glasses



Hacksaw

- Installation tools are not provided, please prepare by yourself.

PARK LIST

Push button, tank lid, water fitting, soft-close toilet seat, wax ring, bolts kit, bolt covers, installation instruction.

The step-by-step guidelines in the installation instructions are a general reference for installing a Two-Piece Toilet. Should there be any discrepancies, we cannot be held liable. It is recommended to install all Products by hiring a licensed professional.



1. Read the complete instruction manual before beginning installation.

2. Confirm that your model will fit in intended location and plumbing fixtures are located where legally required before beginning installation.



3. Not all drawings on this manual are drawn to scale. Please refer to the model chart.

4. Two people are recommended to install and move this product.



5. Product is FRAGILE! To avoid breakage and possible injury handle with care.

NOTE: Specialized tools may be necessary to install the Two-Piece Toilet, plumbing not included.

Two-Piece Toilet Installation Instruction

INSTALLATION STEPS

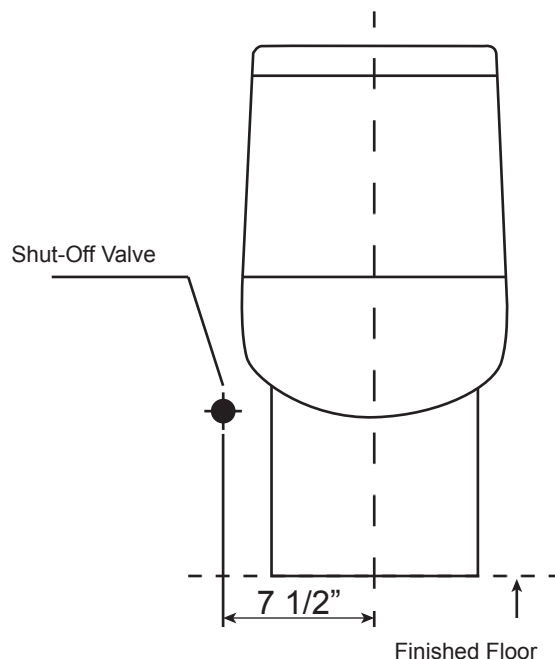
1. Remove Old Toilet

- Turn off the water supply.
- Flush the toilet to empty the tank. Remove any water left in the tank or bowl.
- Disconnect the supply line from the tank.
- Remove decorative caps. Unscrew nuts that attach the toilet to the floor.
- Remove toilet.
- Make sure the water supply valve is shut off before installation.
- Remove old closet bolts from closet flange. Clean any old wax, putty, etc. from base area.

IMPORTANT NOTE REGARDING WATER SUPPLY:

Before installation ensure that the shut-off valve is greater than 7 1/2" from the center of the drain to the center of the shut-off valve on either side.

NOTE: This is a true 12" rough-in toilet from finished wall to center of the drain (no less than 12"). Baseboard thickness may reduce rough-in dimension.



NOTE: Drawings may not exactly define contour of the product.

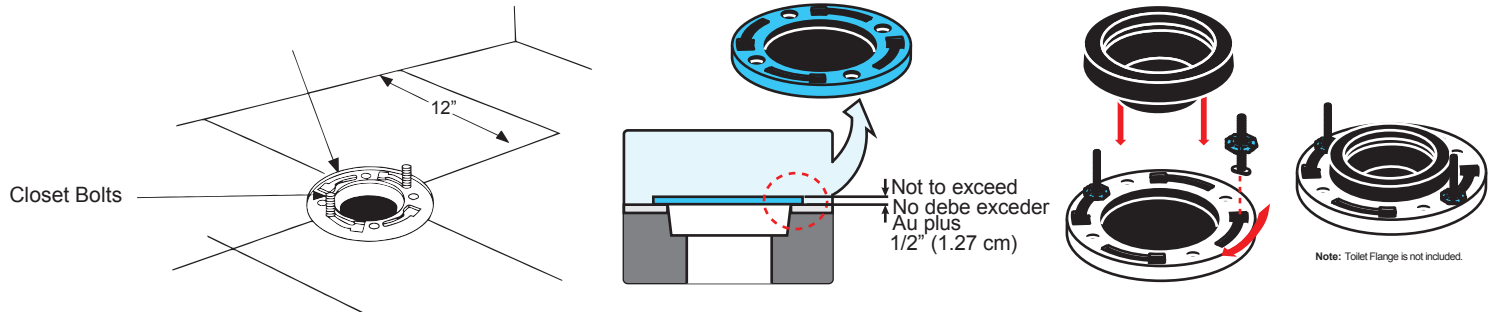
Two-Piece Toilet Installation Instruction

2. Install Closet Bolts

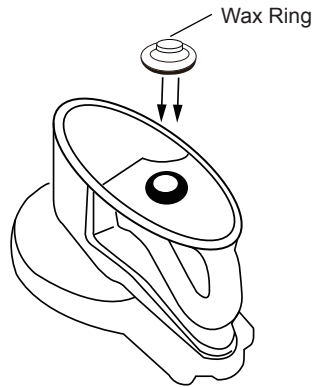
- Install closet bolts to flange channel, turn 90° and slide into place 6" (152mm) apart and parallel to wall.

Note: 1) Ensure top surface of the drain flange is flush to the finished floor, or does not exceed 1/2" (1.27 cm) above the finished floor. Otherwise, consult with a plumbing professional.
2) Toilet Flange is not included.

Closet Flange

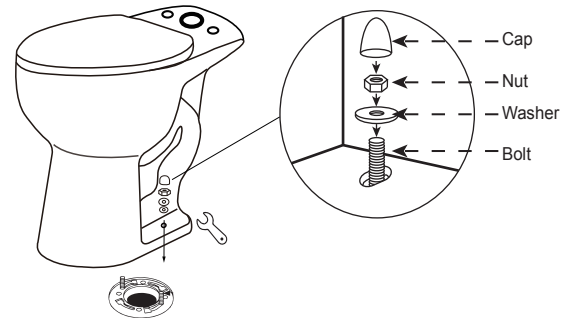
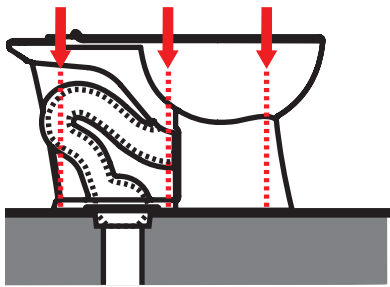


3. Install Wax Ring



- Invert toilet on floor (use cushion to prevent damage), and install wax ring evenly around waste flange, with tapered end of ring facing toilet.

4. Position Toilet on Flange

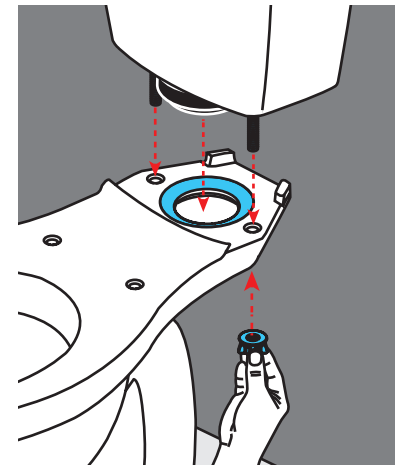
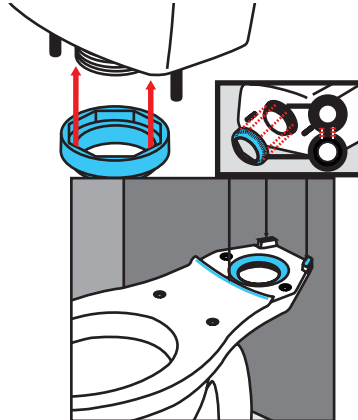
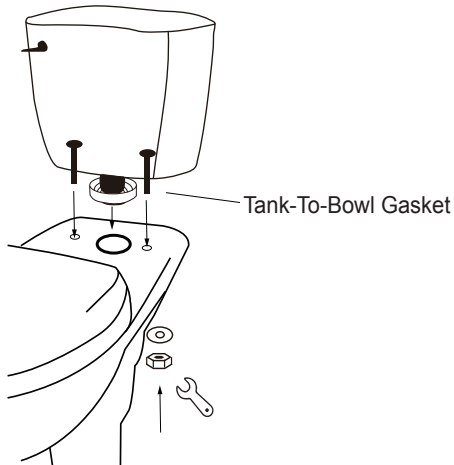


- Lower the toilet onto the closet bolts, so the bolts project through mounting holes in base of toilet.
- Rock to press the bowl completely downward on the wax ring and flange.
- Apply weight evenly until toilet is flush to the floor.
- Do not move after placement or watertight seal may be broken.
- Install the washer and nut in sequence, then alternately tighten the nut until the toilet is firmly sealed to the floor.
- Install the cap.

NOTE: Drawings may not exactly define contour of the product.

Two-Piece Toilet Installation Instruction

5. Install Toilet



- Place the tank gasket over the tank nut ensuring there are not gaps between the gasket and the tank.
- Put the two tank bolts into the tank mounting holes, then pick up the tank and connect it after guiding the bolts to align the tank with the bowl.
- Tighten nuts alternately to make them stable on the toilet bowl.

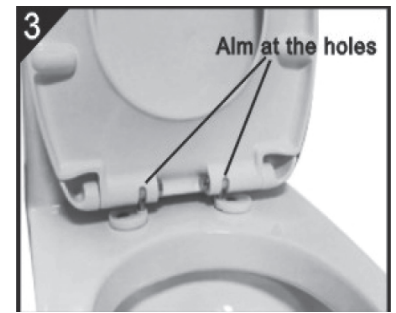
6. Install Toilet Seat



- Insert the screw set on the hinge base through the holes on the pan.



- Tighten the seat screws, but not fully allowing you movement to adjust the seat cover properly.



- Aim at the holes and adjust the hinge base to make the seat cover and pan match. Take out the seat cover once the installation position is confirmed.



- Fix the hinge base on the pan firmly.



- Put the cap into the hinge base



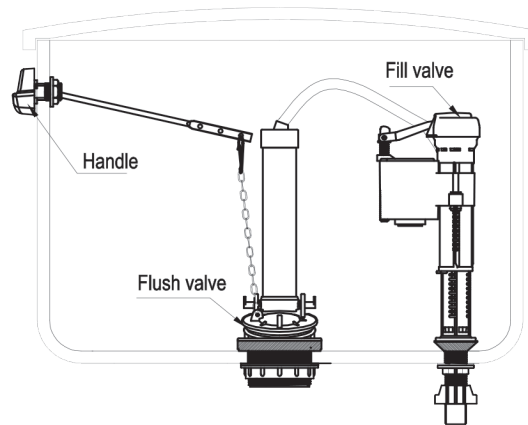
- Fix the seat into the hinge base

NOTE: Drawings may not exactly define contour of the product.

Two-Piece Toilet Installation Instruction

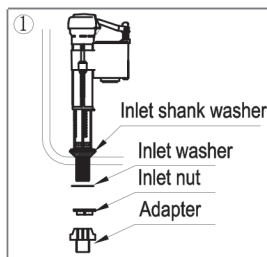
7. Install Flush Button- Single Flush Button on Side Water Tank Style

I. Installation Profile

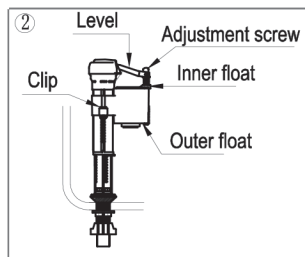


II. Steps

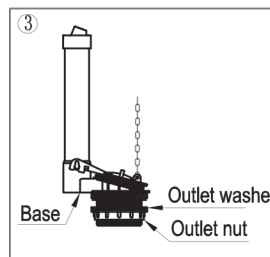
1. Preparation
Clean the tank and pipe.
2. Installation



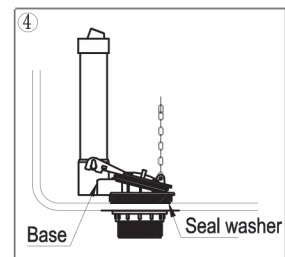
Disassemble the adapter and inlet nut for fill valve installation. Position valve inside tank. Push down on the valve shank (not the top) while tightening inlet nut. Screw the valve shank clockwise and pull the valve body to the correct height.



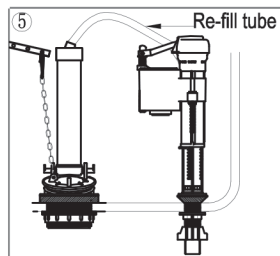
Adjusting the water level by removing the clip and turn outer float to the right position. Move the floats up or down along the valve body to the desired height. Click back into position and replace plastic clip.



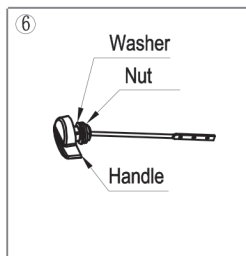
Twist the valve body out of the base.



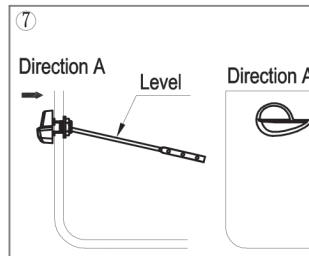
Disassemble outlet nut, outlet washer for flush valve installation. Position the valve inside tank. Push down on the valve body while attaching outlet washer and tightening outlet nut. Make sure the seal washer touches surface of cistern firmly.



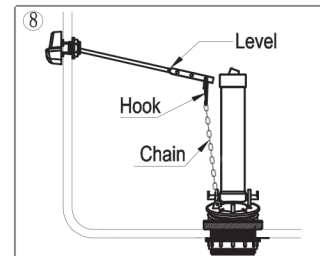
Slide the re-fill tube over the re-fill tube port. Trim the re-fill tube to right size to prevent kinking, insert the other end of the re-fill tube onto the re-fill cap of overflow tube.



Twist the nut and washer out of the handle.



Insert the level into the tank through the handle hole. Adjust the direction of handle according to above figure. Tighten the washer and nut.



Attach the hook to the hole of lever. Check whether the length of the chain is appropriate. The flush valve can not work normally if the chain is too long. Too short chain may lead to leakage.

III. Trouble Shooting Guide

1. Flush Valve

No.	Issue	Possible Reason	Solution
1	Water leaking from outlet	Valve not installed correctly	Check installation and re-tighten
2	Water leaking from flapper seal	Broken washer; Debris on washer / flapper; Length of chain is too short	Change washer; Clean washer with warm water so surface is clear; Adjust length of chain
3	Flush valve not working	Length of chain is too short	Adjust length of chain

2. Fill Valve

No.	Issue	Possible Reason	Solution
1	Erratic or no water fill	Blockage in water supply; In-correct float valve adjustment	Check both fill valve and water supply line for blockage; Adjust float valve to correct position
2	Water level too high / low	in-correct float position	Adjust float valve to correct position
3	Water leaking from base of fill valve	Fault with in-let installation (loose); Surface of cistern un-even	Check screw for fitment and retighten if necessary; Contact your ceramic supplier

Please keep the instruction for future use.

Products may be amended in line with continuous improvement, please refer to actual product.

NOTE: Drawings may not exactly define contour of the product.