

## Features

- Solid teak wood, plywood
- 4 soft-close doors
- 3 soft-close drawers
- 2 interior shelves
- Black finish hardware on Natural Teak
- Matte gold finish hardware on Brown Teak
- Adjustable height levelers

## Colors / Couleurs

- Natural Teak finish / Finition Teck Naturel
- Brown Teak / Teck brun

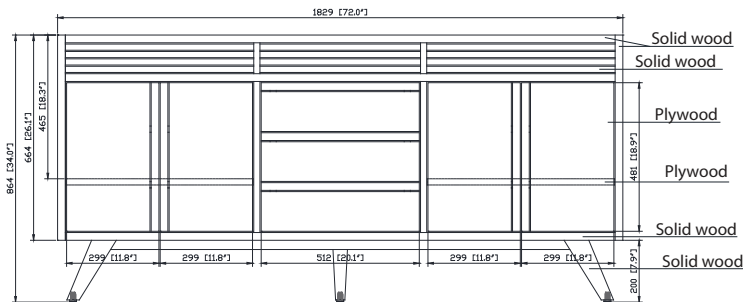
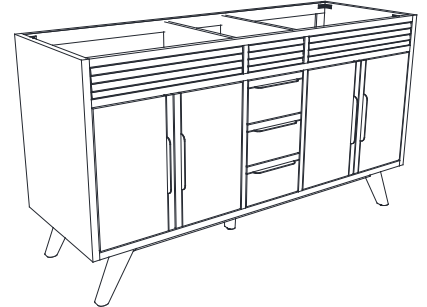
## Nominal Dimension / Dimension Nominale

- 72W x 21D x 34H inches | 1829 x 533 x 864 mm

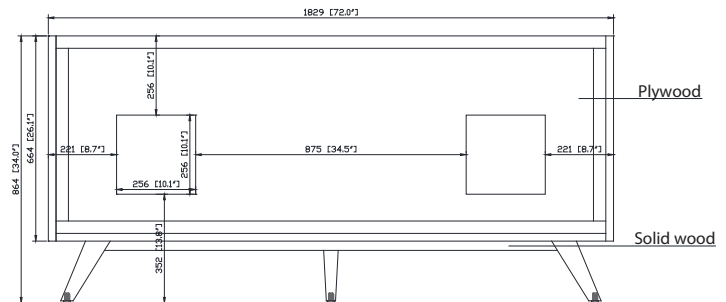
## Product Diagrams / Diagrammes Produit

## Caractéristiques

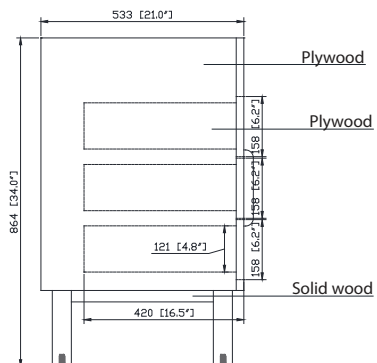
- Teck massif et contreplaqué
- 4 portes à fermeture douce
- 3 tiroirs à fermeture douce
- 2 étagères intérieures
- Matériel de finition noir sur teck naturel
- Matériel de finition doré mat sur teck brun
- Patins réglables en hauteur



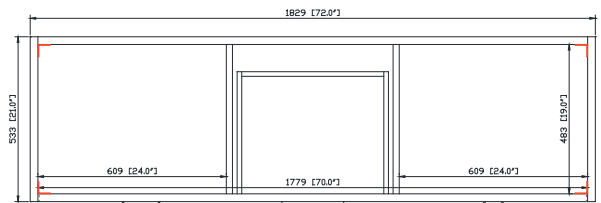
Front / Devant



Back / Derrière



Side / Côté



Top / Haut