

# Installation Process

## 1. First Installation Method: Using Joist



- 1. Install the joist**  
Install the joists on the walls and make sure the distance between joist is within 30-40cm and all joists are on the same level.
- 2. Install Panels Vertically and Horizontally**  
Install the panels on the joists in turn.

**3. Fix Panels with Screws**  
Please fix the screws with air gun in the places shown in pictures.



## 2. Second Installation Method : Using Clips

### Accessories & Tools



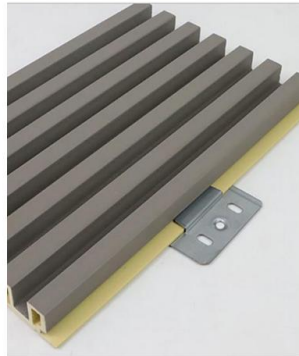
Screws



Clips



Glues



### Installation Process

- 1. WPC wall panels are installed with clips when the wall is flat.
- 2. 2pcs of clips are needed for 1 meter of wall panels.
- 3. Glues can be made on the back of the panels to make the panels more stable.
- 4. Any of nail-free glue, glass glue and structural adhesives is ok.

