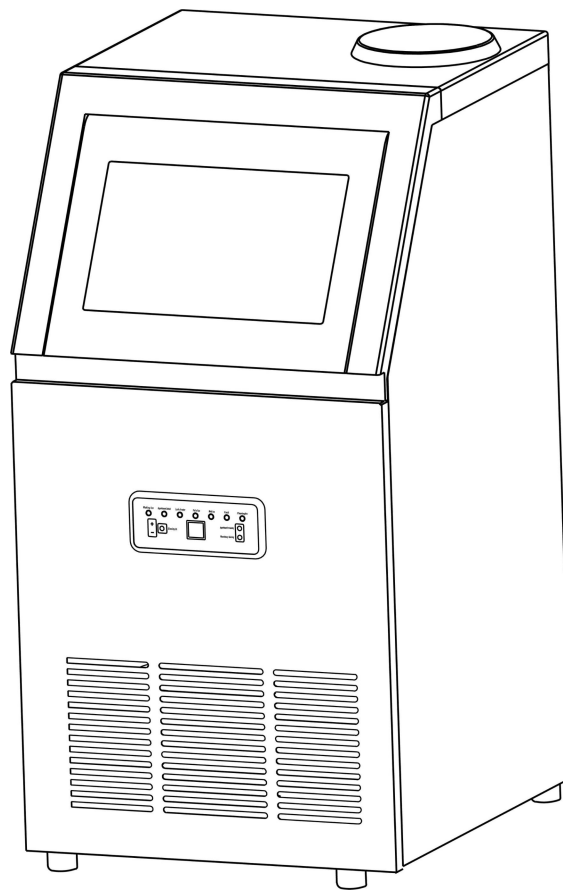


ICE MAKER

Instruction Manual



It is important that you read these instructions carefully and keep it for future reference.

Support email: icemaker@tazpi.com

Phone number: (252)465-3438





IMPORTANT SAFETY INSTRUCTIONS

When using electrical appliances, basic safety precautions should be followed to reduce the risk of fire, electric shock, and injury to persons or property. Read all instructions before operating the machine for the first time.

CAUTION: ICE CAN'T BE STORED IN THE ICE BIN DURING NIGHT-TIME, IT'S NOT FRIDGE, ICE WILL BE MELTED TO WATER AND FLOW OUT OF THE MACHINE.

1. If connect with water supply, CAUTION: must connect the potable water supply;
2. The machine is intended to be used in household and similar applications such as:
 - staff kitchen areas in shops, offices, and other working environments;
 - farmhouses
 - by clients in hotels, motels, and other residential type environments;
 - Catering industry and similar industries.
3. The machine should be used indoors and without obstacles surrounded good ventilation place. There is must be 15cm at least between the four sides of the machine with the wall.
4. When using electrical appliances, basic safety precautions should be followed to reduce the risk of fire, electric shock, and injury to persons or property. Read all instructions before using any appliance.
5. Don't operate this or any other appliance with a damaged cord.
6. Connect to properly polarized outlets only. No other appliance should be plugged into the same outlet. Be sure that the plug is fully inserted into the socket.
7. Don't place the machine and power cord near flammable material. Do not cover the cord. Do not submerge it in water.
8. We do not recommend the use of an extension cord, as it may overheat and become a risk of fire.
9. Unplug the ice maker before cleaning or making any repairs or servicing.
10. Exercise caution and supervision when the appliance is used near children.
11. Don't use your ice maker outdoors. Avoid direct sunlight and make sure that there is at least 5 inches of space between the back and sides of your unit and the wall.
12. Don't use any liquid other than water in the unit to make the ice.
13. Do not clean your ice maker with flammable detergents. The fumes can create a fire hazard or explosion.
14. Do not tip the machine over.
15. If the ice maker is brought indoors from outdoors during the wintertime, give it a few hours to warm up to room temperature before plugging into the power source.

16. This unit should be properly grounded for your safety. The power cord is equipped with a three-prong plug mated with standard three-prong wall outlets to minimize the possibility of electric shock.
17. Plug your appliance into a dedicated, properly installed, and grounded wall outlet. Do not, under any circumstance power and /or grounding should be directed toward a certified electrician.
18. The foaming materials inside are combustible which must be kept away from fire.
19. It's forbidden to pull the cable to unplug the plug, pull the plug is a must.

IMPORTANCE: To avoid hazards due to instability, the unit must be placed on an even and flat surface.

WARNING: This appliance must be grounded.

- 1) The fuse on the PCB is 15A, if change, must be operated by a technician.
- 2) voltage fluctuation can't be exceeded $\pm 10\%$ than the rated voltage, or a Voltage stabilizer is needed.

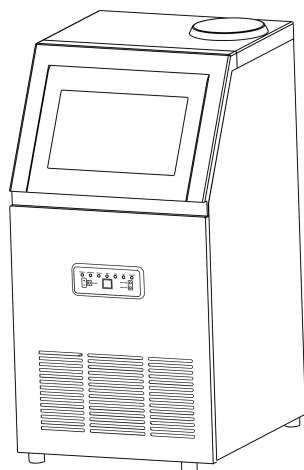
IMPORTANCE: To avoid hazards due to instability, the unit must be placed on an even and flat surface.

OPERATING PROCEDURES

UNPACKING YOUR ICE MAKER

1. Remove all exterior and interior packaging materials. Check whether all the below accessories are included or not. If any parts are missing, please contact our customer service. After you unpack the machine, we recommend you to leaving it for 24 hours before turning it on.
2. Clean the interior with lukewarm water and a soft cloth or clean the unit using the Self-Clean function.
3. Find a location for your ice maker where it's protected from direct sunlight and other sources of heat (i.e. stove, furnace, radiator). Place the ice maker on a level surface. Make sure that there is at least 5 inches of space between the back and sides of your ice maker and the wall.
4. Allow one hour for the refrigerant to settle before plugging the unit for initial use.
5. The appliance must be positioned where the plug is accessible.

Package Contents



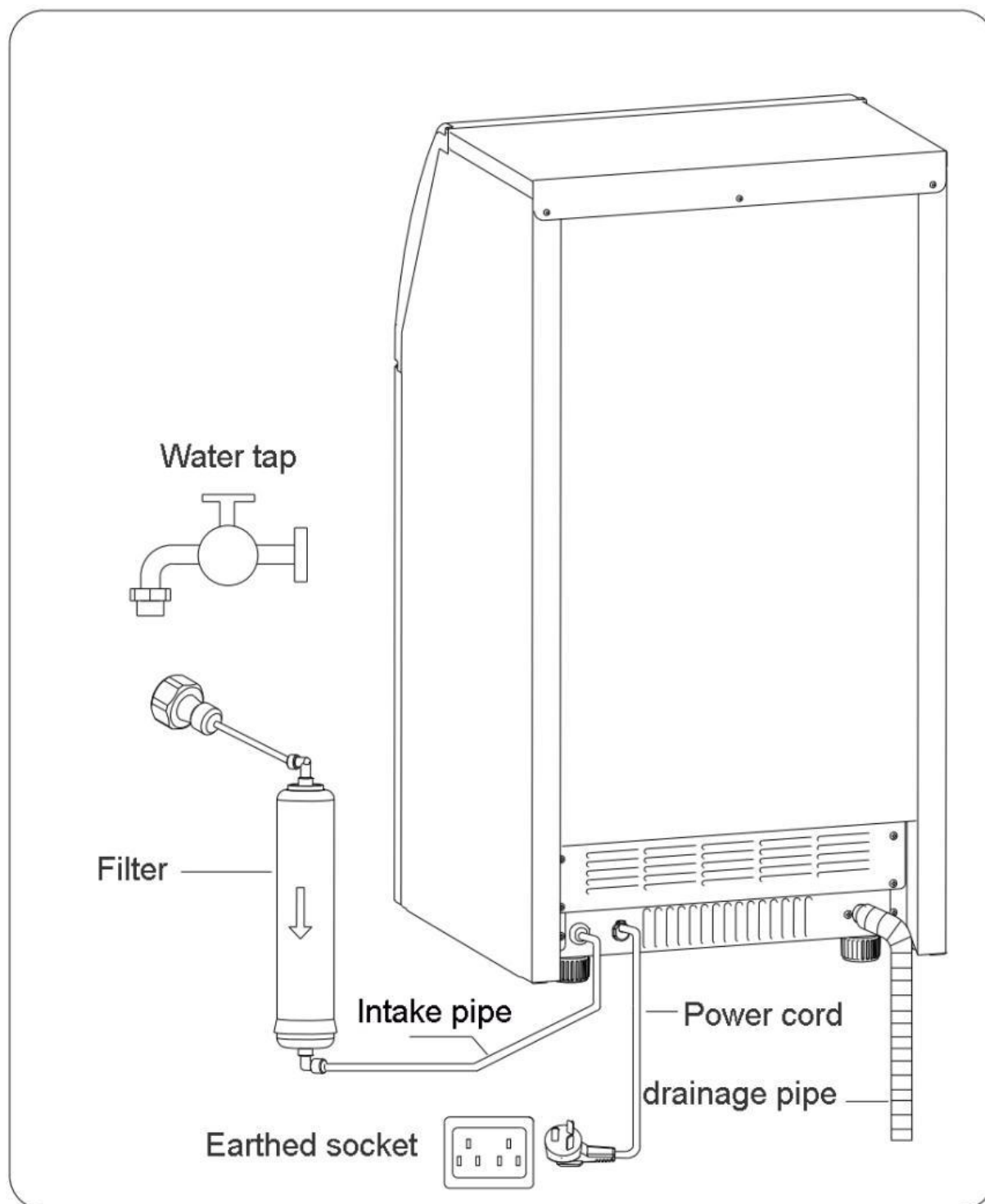
Ice maker machine x 1

Warm Tips: .Check whether all below accessories are included.

Accessories list				
NO	Description	Picture	Usage	QTY
1	Manual		Operation manual	1PC
2	Filter		Filter water	1PC
3	Drainage pipe		Drain	1PC
4	Ice spoon		Take ice cubes	1PC
5	nylon cable ties		Fix pipe if needed	2PCS
6	Hoop		fasten the outlet and the drainage pipe together if needed	1PC
7	Seal ring		Do put it in the faucet of the intake pipe.The other one is spare.	2PCS
8	Spare blue clip		Spare blue clip if needed.	2PCS
9	Spare plug		Spare plug which plug the tank if needed.	1PC

CONNECTING YOUR ICE MAKER WITH OTHER PARTS

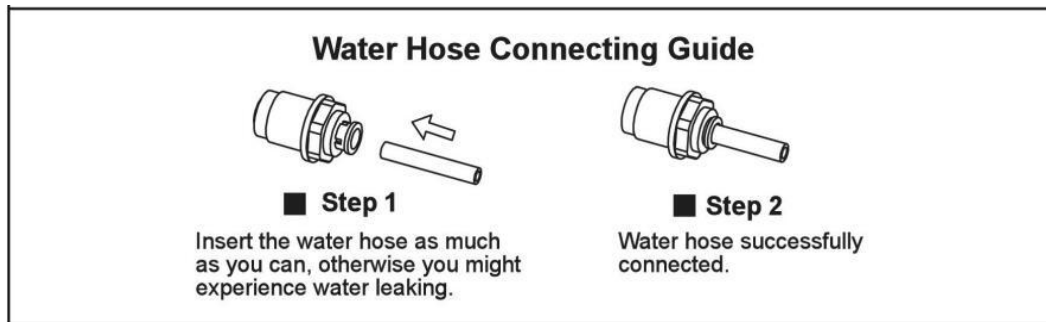
Please connect your ice maker with other parts by referring the diagram below.



We suggest you change the water filter for about 3 months according to your local water quality situation. The cleanliness of the ice depends on the water and the cleaner the water the longer the life of the ice machine will be. If you want to buy the original filter, please contact us directly email: icemaker@tazpi.com

Connect drainage pipe and water intake pipe

- Warning: 1) The machine can only connect with drinking water sources, and must meet local drinking water standards
- 2) The water pressure must be in 14.5-58psi, if exceed 58psi, a pressure reducing valve must be connected.
- 3) Drainage: The outlet of the drainage pipe must be lower than the outlet on the machine

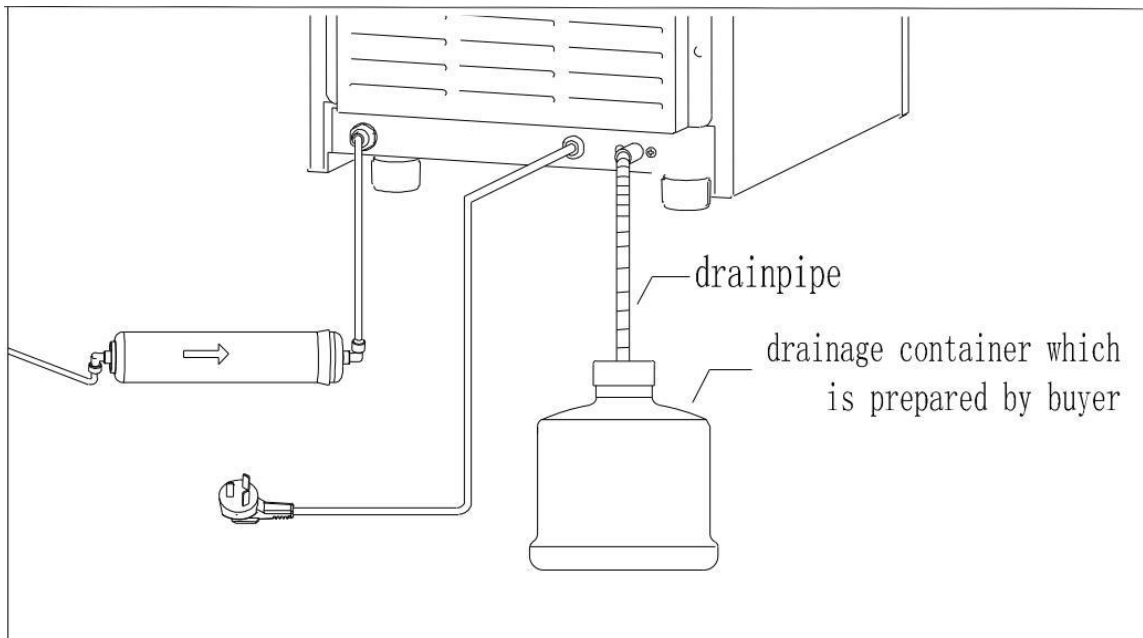


If you have questions about the connection, we can send the tutorial video to guide you, please contact: icemaker@tazpi.com, phone number is (252)465-3438

Drain.

Warning: Because the ice in the inner tank will melt, drain pipe must be connected before using, and insert the drain pipe into a container or into the sewer.

Note: Connect one end of the drain pipe to the machine, and the other end to a container or sewer. The other port of the drain pipe must be lower than the drain port of the machine.



If you need a suitable drain pump, you could contact us by email.

Email Address: icemaker@tazpi.com

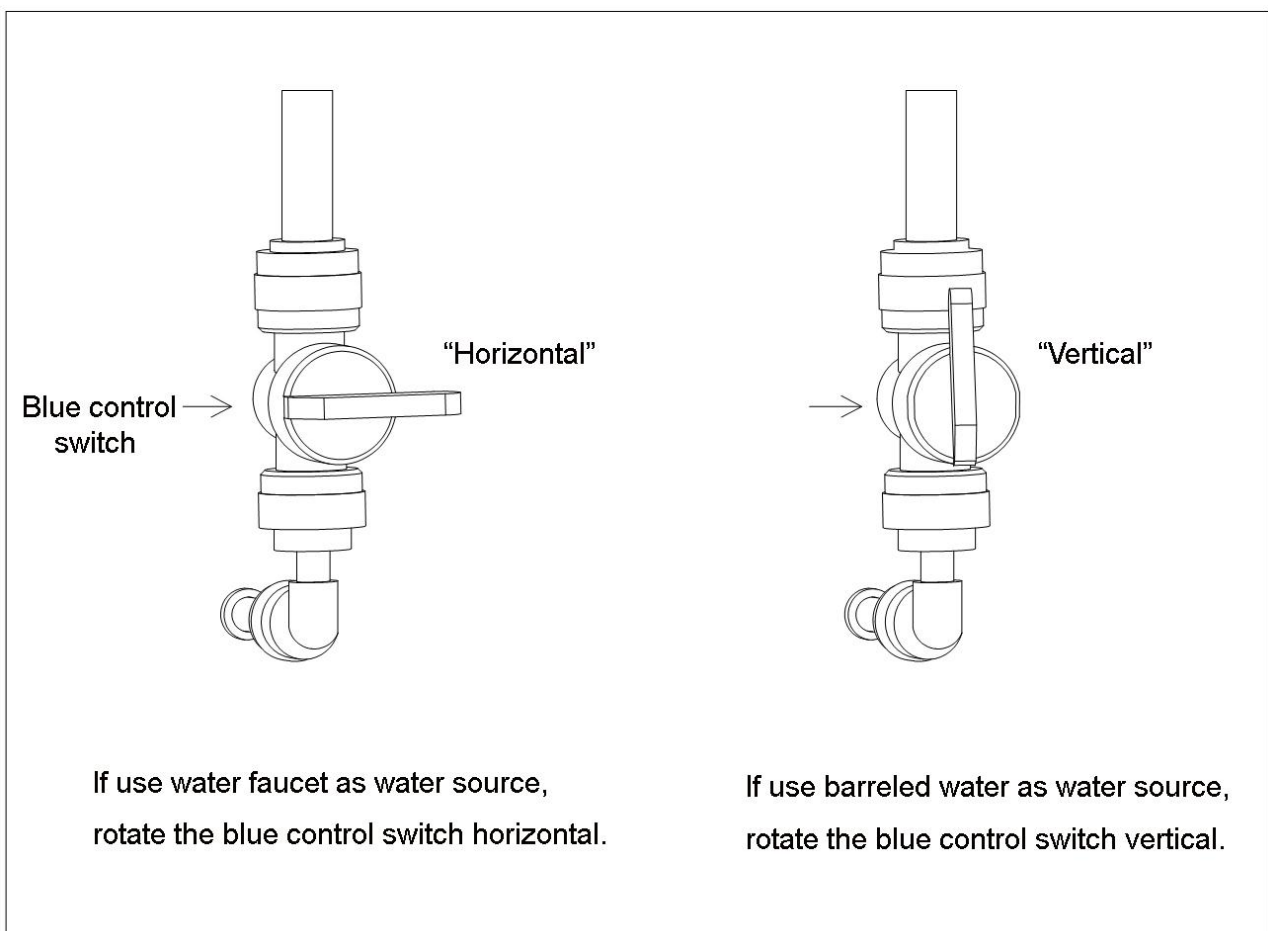
Phone Number: (252)465-3438

We will guide you

USING BARRELED WATER AS WATER SOURCE

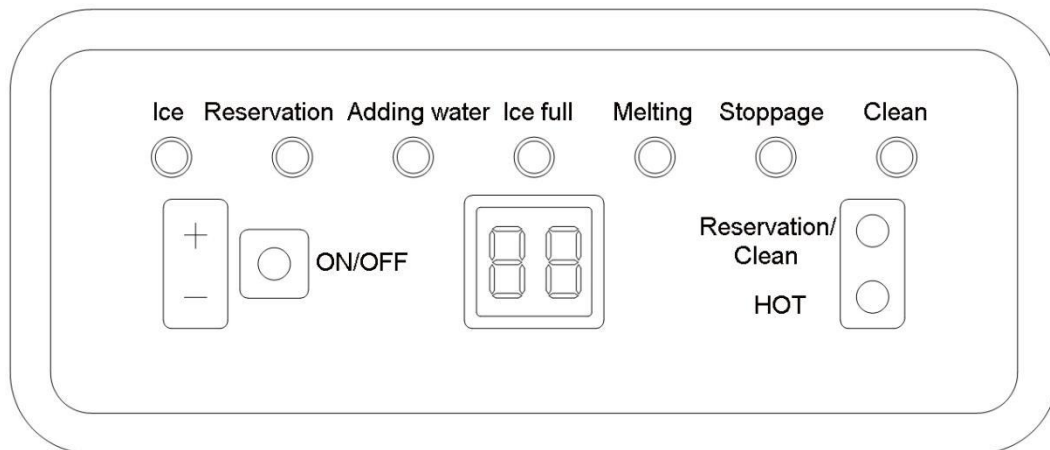
You can use barreled water as water source. Please remember to replenish water regularly. Besides, please rotate the blue control switch vertical and turn off the pipe water supply.

1. If you use water faucet as water source, please ensure that the water faucet is open for continuous water supply. If water runs out, the “add water” indicator will light on.
2. If you use barreled water as water source. Please remember to replenish water regularly or the “stoppage” indicator will light on.
3. When you use water faucet as water source, please rotate the blue control switch in the machine horizontal. On the other hand, if you use barreled water as water source, please rotate the blue control switch vertical. Please refer to the picture below.



If you have questions, we can send the tutorial video to guide you, please contact: icemaker@tazpi.com, phone number is (252)465-3438

MACHINE OPERATIONS



Operation Panel

Ice making operation:

1. Connect the machine to the power and press the **“ON/OFF”** button. The **“ice making”** indicator will light on.
Through **“+”/“-”** to increase or decrease ice making time ,which will be effected at the current cycle .
Press **“+”** button,if the screen display **“1”**,means ice making time will be added 1 min,max time can be added 8min. If press **“-”** button and display **“-1”**,means ice making time will be decreased 1min,the max time is 5 min. That means the time can be adjusted from -5 to 8 min.
2. When the countdown of time is finished, the **“melting”** indicator will light on. The ice cubes will come off the freezing panel later.
3. After the ice cubes come off. The machine will enter another loop of ice making automatically.

Auto Turning On/Off:

1. When the machine is turned off while connected to the power, press the **“Reservation/Clean”** button and the **“+”/“-”** button to set the auto-turning-on time (in hours). The machine will automatically turns on after the countdown is finished.
2. When the machine is at the middle of ice making, press the **“Reservation/Clean”** button and the **“+”/“-”** button to set the auto-turning-off time (in hours). The machine will automatically turns off after the countdown is finished.

Self-cleaning:

1. When the machine is turned off while connected to the power, press the **“Reservation/Clean”** button and hold it for a while. The machine will automatically enter self-clean program.

Notes:

- (1) If you change the countdown time during the middle of the ice making procedure, it will take effect at the next loop. You can long press the “HOT” button during the ice making to unload the ice cubes ahead of time.
- (2) The surrounding environmental temperature will influence the time needed for ice making.

CLEANING & MAINTENANCE

Please thoroughly clean your ice maker before initial use.

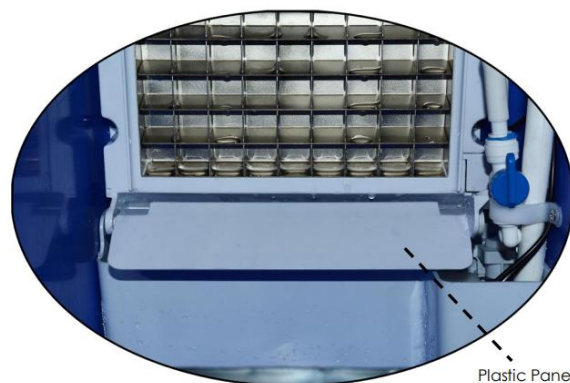
Exterior: the outside of the ice maker should be cleaned regularly with a mild detergent and warm water. Always use a soft cloth to avoid scratching or damaging the housing.

INTERIOR: please use the following Self-Clean function:

1. Add water and vinegar or lemon juice mix (1:1 ratio)
2. Plug in unit, press and hold the CLEAN button for approximately 3 seconds, then release. The unit will automatically enter Self-clean program. This process takes about 5-6 minutes. When the Self-Clean program is finished, unit will automatically power off.
3. The fan blade will be rotating. This process rinses the inside parts several times.
4. After the Self-Clean program is completed, unplug the power cord and drain out the water by unplugging the drain cap on the side. Replace drain cap.
5. Add fresh water to the water reservoir, up to the water level mark.
6. Plug the unit and repeat the Self-Clean process by repeating steps 3 to 5. This will rinse out the vinegar/lemon residue.
7. After draining the water, replace and tighten drain cap.
8. Dry the interior and exterior with a clean, soft cloth.

NOTE: It is strongly recommended to clean the unit before initial use or after the unit has not been in use for a long period of time.

NOTE



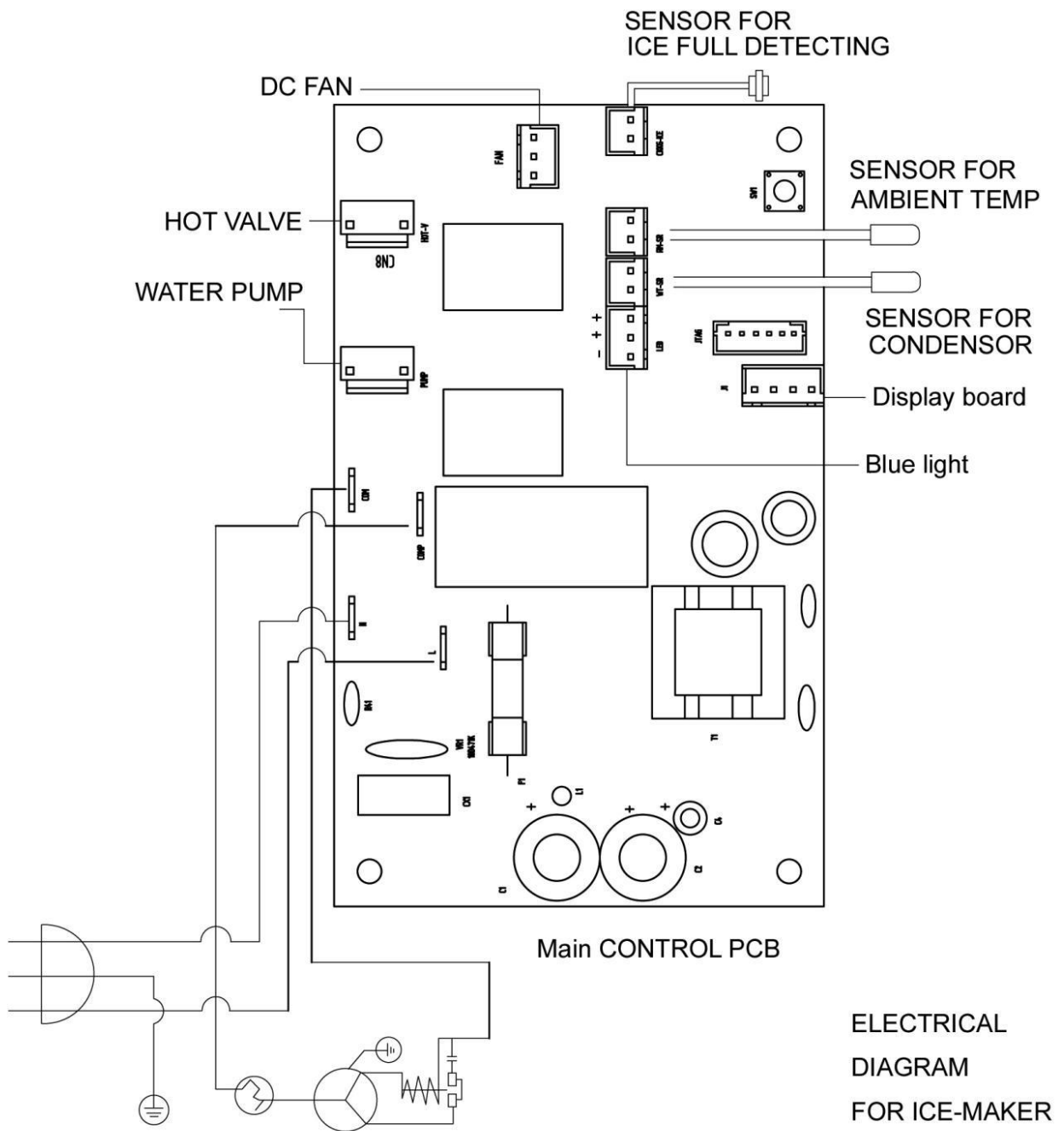
As the production of ice cubes increases, the plastic panel inside the machine (shown above) might be pressed down by the ice cubes. When the plastic panel is pressed down, the machine will stop producing ice cubes automatically and the “stoppage” indicator will light on. Please clean out the ice cubes regularly for continuation of ice making.

Common malfunction analysis

E1	Ice full indicator is on, and proximity switch didn't react	Evaporator connector didn't assemble well	Re-install the connector
		Proximity switch is not sensitive	Replace the switch
		The connector didn't return to original position	Take away the ice to make the connector return to original position
E2	Normal to make ice	Stop every 4 cycles, and the process of ice drop continued for 5 min	Proximity switch is not sensitive, replace it
	No water in the tank	The water tank is not plugged	Put the plug back
		Use barreled water as water source	The blue tap didn't rotate to vertical
		Use barreled water as water source, but no water flow down	The water pipe was jammed, disconnect and clean it.
		Use tap water as water source	Check the water supply
	Water slopped over the tank	Use barreled water as water source	Check whether the water pipe was inserted well or not
		Use tap water as water source	The blue tap didn't rotate to horizontal
		Use tap water as water source	Water pressure is too high, water float can't work. Adjust the water pressure or replace by a new one.
	Water in the tank	No water or low flow	Pump is badly clogged up, replace or clean it
			The spray pipe is clogged up, clean it
	Water flow and water get cool	Thin ice on the evaporator	Increase the making time through "+"
		very solid ice on the evaporator	Reduce the making time through "-"
		Some water sprayed to ice storage tank	Adjust the spray pipe
		The water leak from the back of water tank	The tank need to be adjusted.
	Water flow down but water is not cool	The main board didn't supply electricity to compressor	Replace by a new main board
		Compressor didn't work	Check the starter, replace by a new one if needed
		Compressor is very hot	Replace
		Compressor work but the connected copper pipe didn't get cool	The compressor leak
E3	The fan is not work	The condenser prob is not sensitive	Unplug the prob or replace by a new one
		The fan is jammed	Adjust the fan
		Fan is broken	Replace by a new fan
E4	Ice full	The connector didn't return to original position	Take away the ice to make the connector return to original position

If your ice maker shows E1,E2,E3,E4 code, but you can't solve it, please take a video to us, we can help, please contact: icemaker@tazpi.com, phone number is (252)465-3438

Circuit Diagram



If you have any questions, please contact us:
Support email: icemaker@tazpi.com
phone number: (252)465-3438

This is our YouTube channel,
if you need tutorial videos, you can subscribe us and watch.

