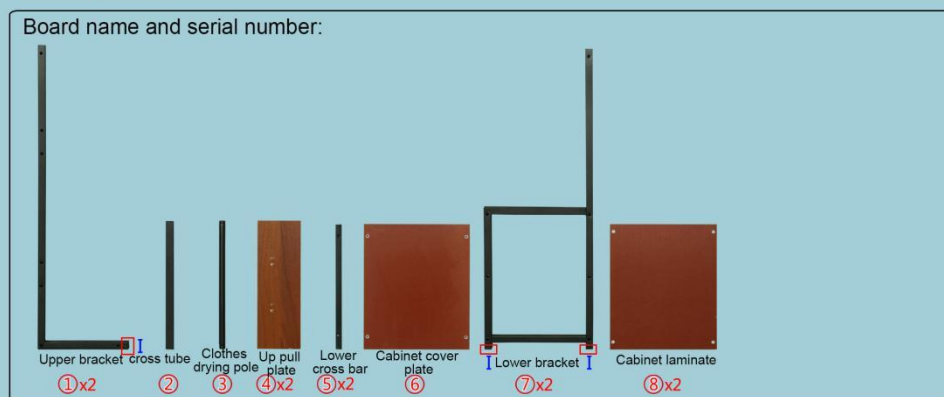


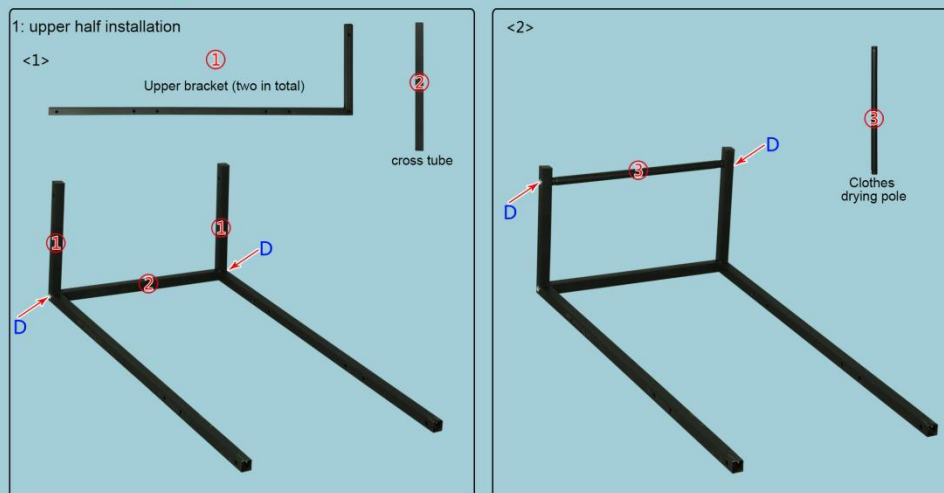
Coat rack installation drawing

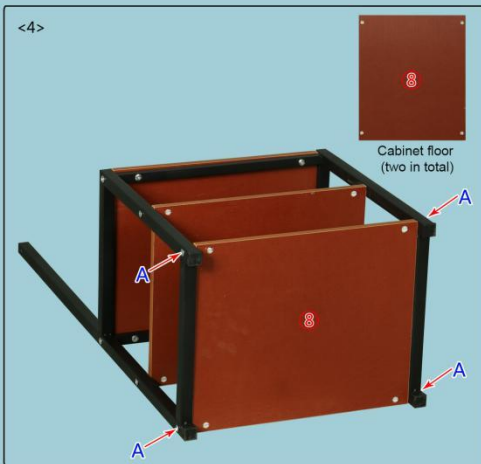
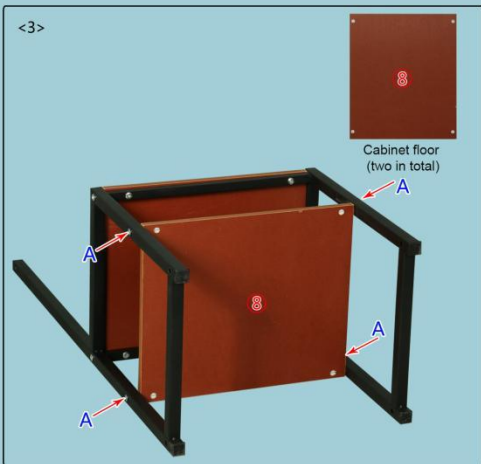
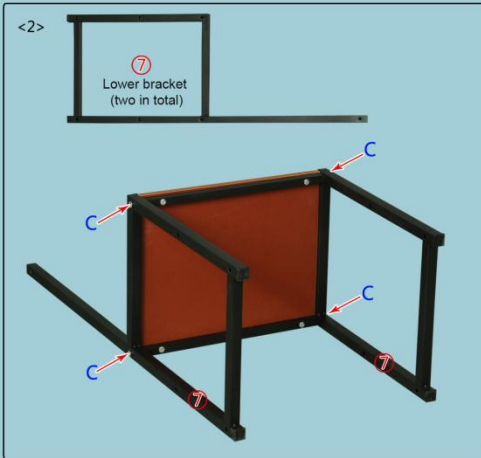
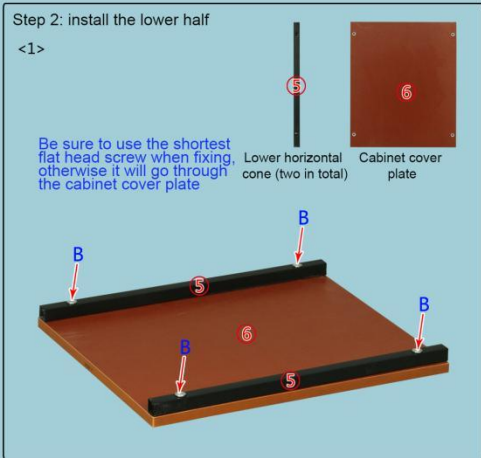
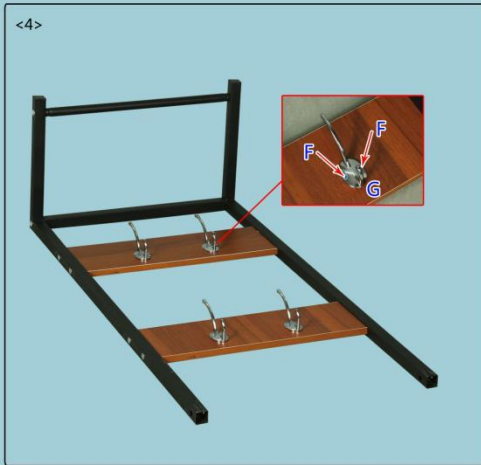
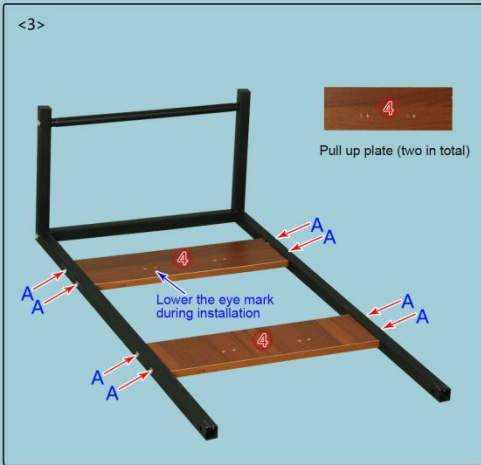
								
5cm tip screw	2cm flat head screw	3cm flat head screw	4cm flat head screw	Nut	Minimum self tapping screw	Clothes hook	Connector	Stopper
A*16	B*4	C*8	D*4	E*4	F*8	G*4	H*2	I*6

Warm tip: tighten the screws seven times during installation, and then tighten them after all are completed!



Installation steps:





Step 3: integral part installation

<1>



Connect the bracket of the upper and lower parts with the connector, and align the hole position on the bracket.



Insert the 3cm flat head screw from the outside and then screw in the nut. Pay attention that the screw must be tightened.

< 2 > straighten the whole after installation



Finish the map!