

# USER GUIDE

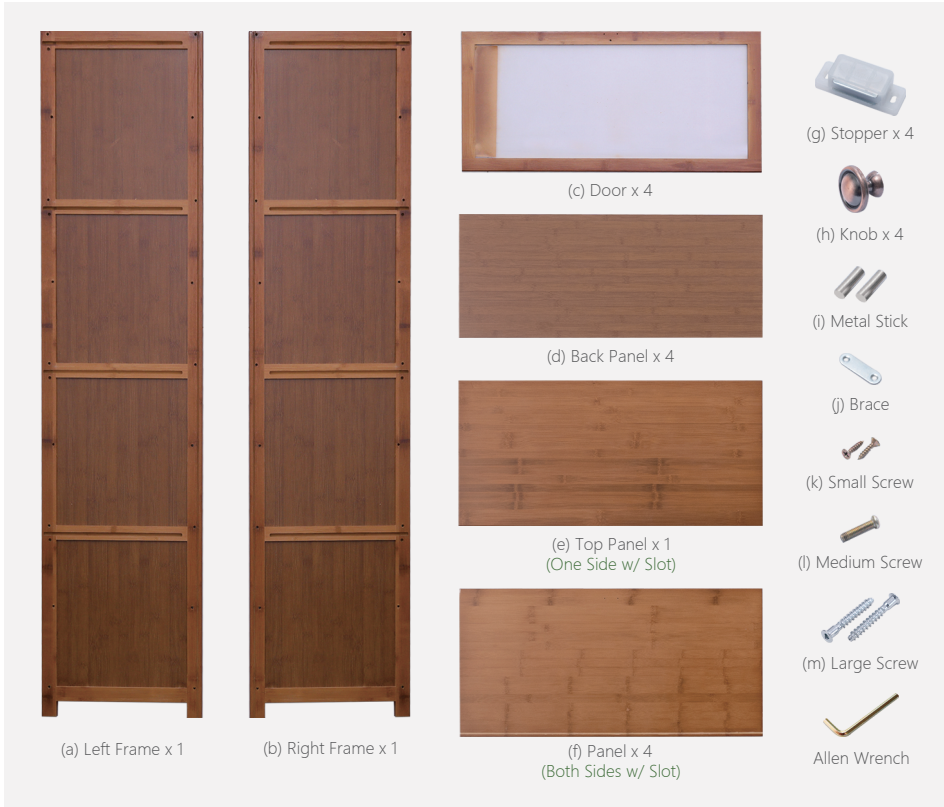
# BOOKSHELF

Natural / Stylish / Unique



## HARDWARE

This is for 4 tiers bookshelf only. Hardware count vary for different tiers of bookshelf.



## ⚠ ATTENTION

- 1 Please always read and follow the assembly, maintenance and operating instruction.
- 2 Do not discard any of the packaging until you have checked that you have all the parts and pack of fittings.
- 3 Keep children away during assembly. This item contains small parts which can be swallowed by children.
- 4 Wipe frames with water gently, do not use bleach, acid, or other solvents.
- 5 Check all hardwares before assembly. Incorrect parts used may lead to damage.



Scan the QR code to view the assembly video.

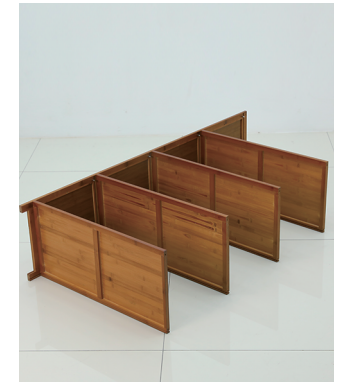
# ASSEMBLY INSTRUCTIONS



1 Insert Metal Stick (i) in the pre-drilled hole on Frames (a)(b).



2 Position Panel (f) and Stopper (g) as picture shown. Secure with Small Screws (k).



3 Secure Frame (a) and Panels (f) with Large Screws (m) as picture shown.



4 Secure Top Panel (e) with Large Screws (m).



5 Insert Back Panels (d) to slot as picture shown.

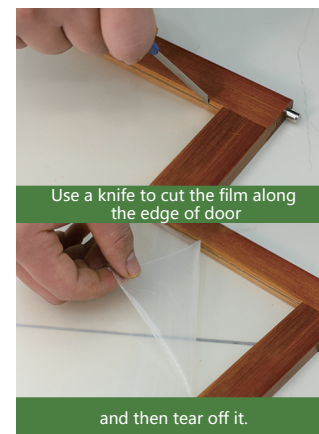


6 Position and secure Frame (b) with Large Screws (m)

© 2020-2021 by Pundarika LLC - MoNiBloom.com



7 Install Doors (c), Braces (j), Knobs (h) and Metal Sticks (i) as picture shown.



9 Install doors to the rack as picture shown.