

OWNER'S MANUAL

Movable Power Lift Recliner



MODEL: W002

1. ASSEMBLE GUIDE

Thank you very much for choosing our product!

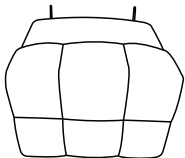

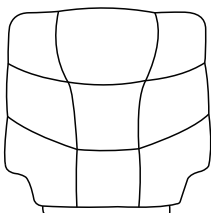
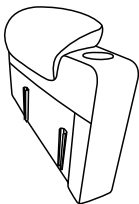
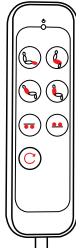


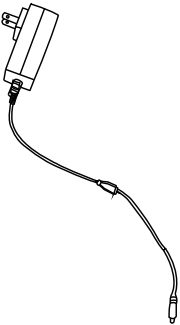



Please take time to read these instructions thoroughly and follow each step carefully for safe and easy operation. Keep this manual for future reference, especially for the safety information.

Also, it is better for you to assemble the chair in cooperation with 2-person, having a second person to help you makes it even easier.

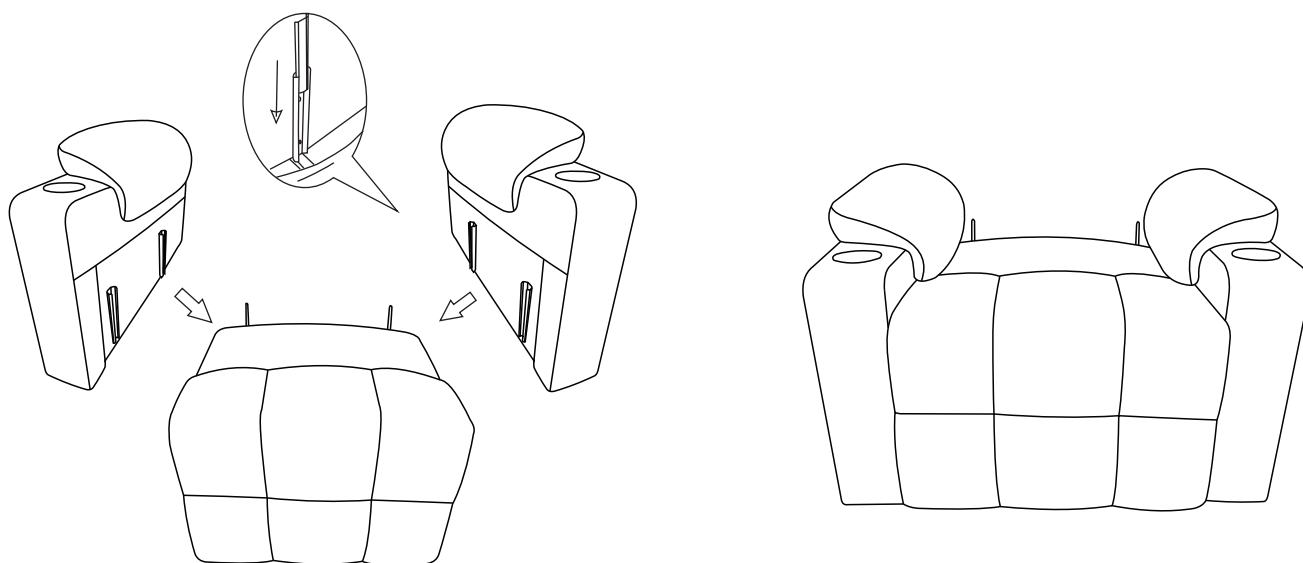
Please read and understand this manual before any assembly. Before beginning assembly of product, make sure all parts are present. Compare parts with packaging contents list.

If any part is missing, damaged and any questions, please feel free to contact us.

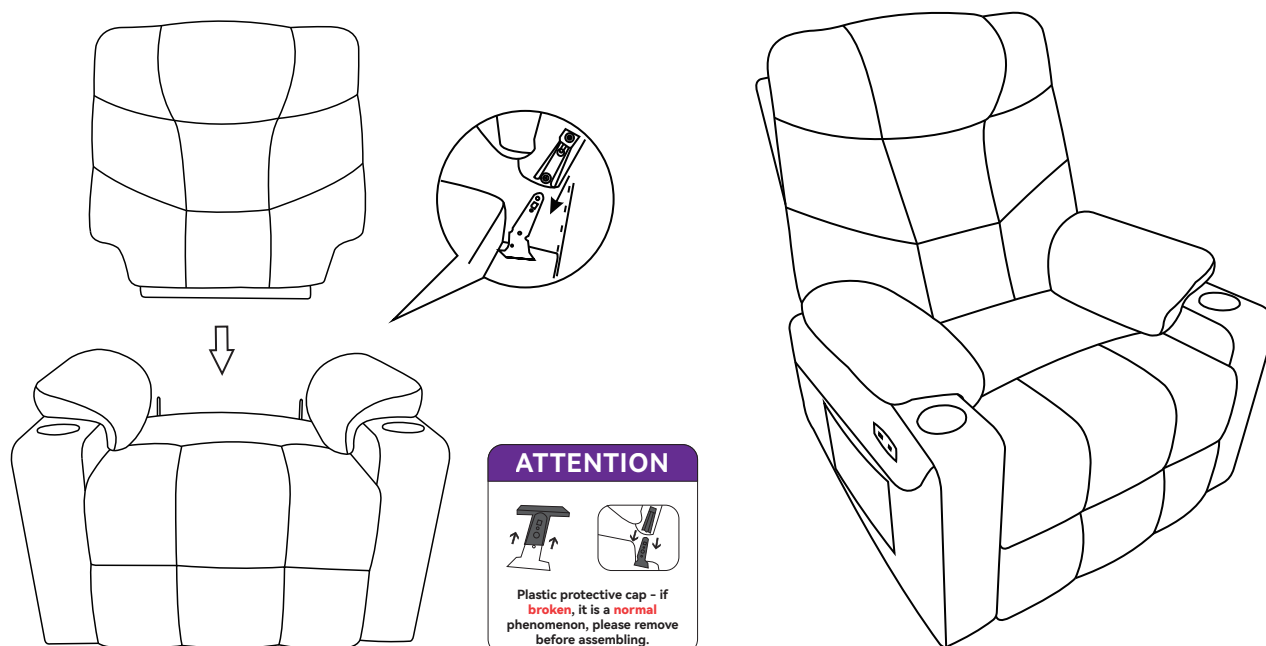
2. PARTS LIST

BOX 1					
Part	Description	Qty	Part	Description	Qty
A		1PC	B		1PC
BOX 2					
Part	C	D	E	F	
Description					
Qty	1PC	1PC	1PC	4PC	
Part	G	H	I	J	
Description					
Qty	1PC	1PC	2PC	1PC	
Part	K				
Description					
	1PC				

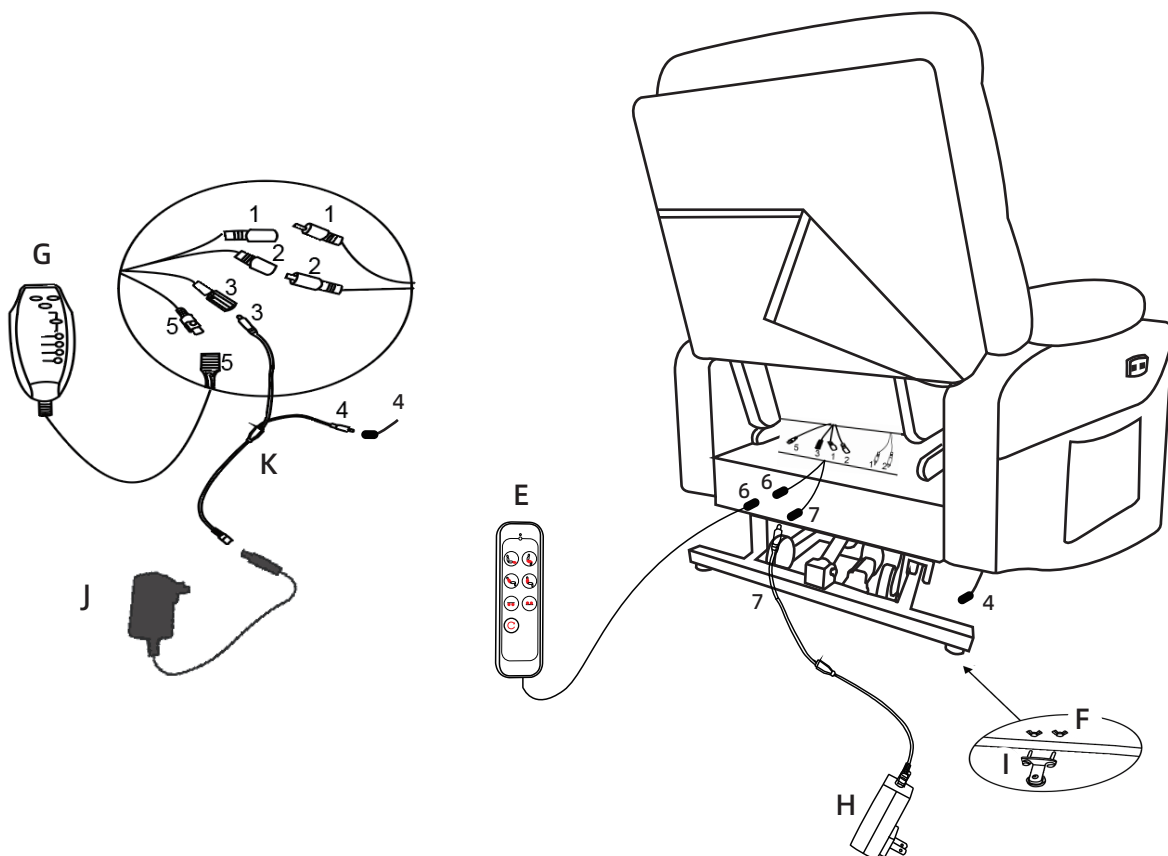
3. ASSEMBLY STEPS



Step1: Align the two side slots and install the Armrest.

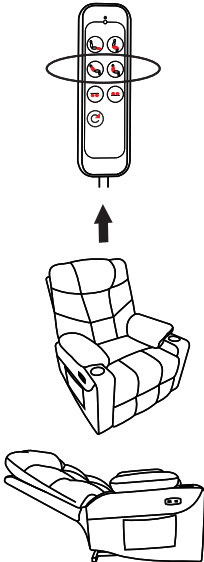
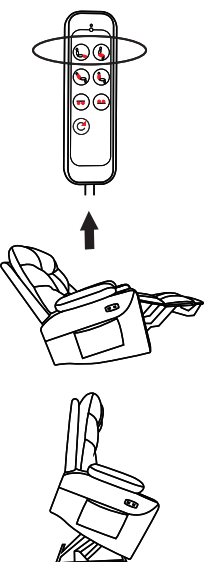
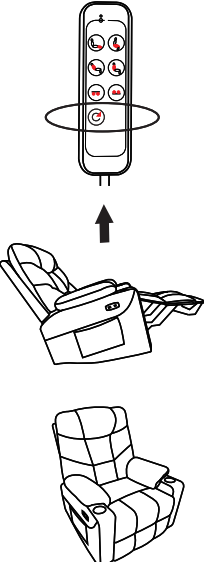


Step2: Align the back to the seat base through the slots then to press down backrest, until hear a “click” , then check that the backrest is no longer shaking and will not be pulled out.

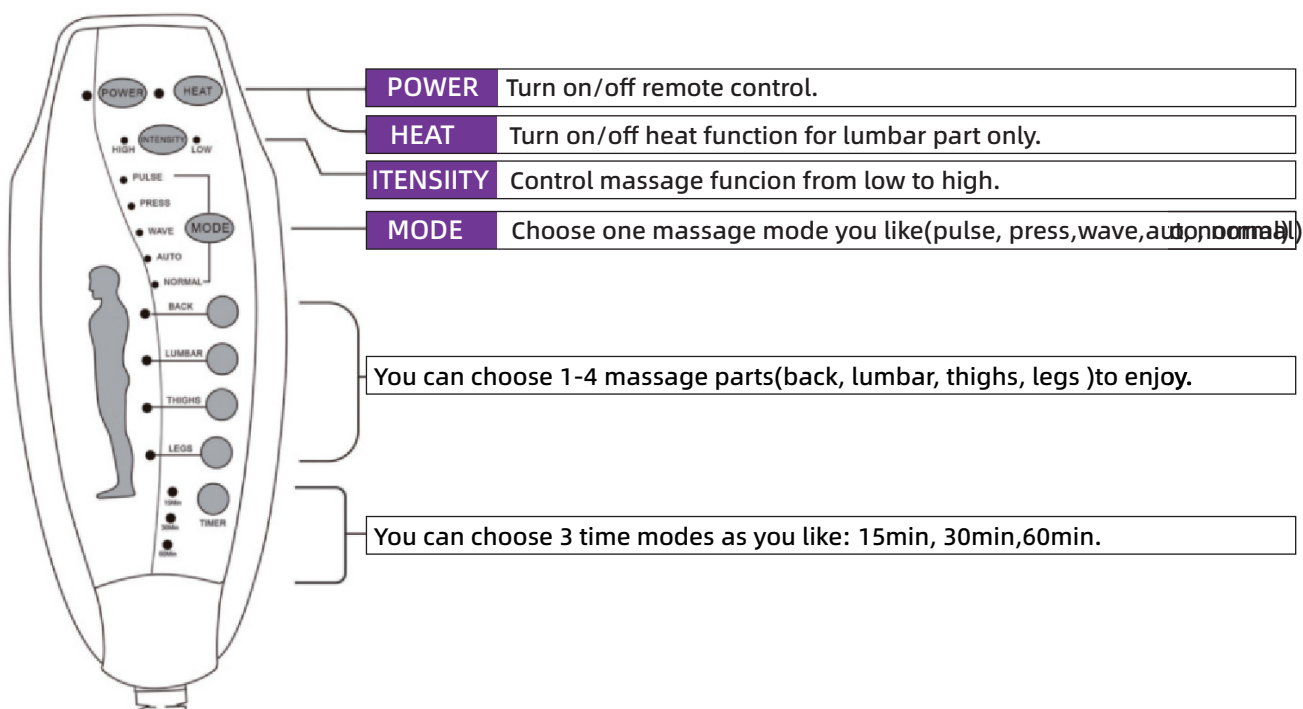


Step3: Connect the wires with the same numbers according to the picture above (if you still have questions, watch the installation video on the product page or contact us)

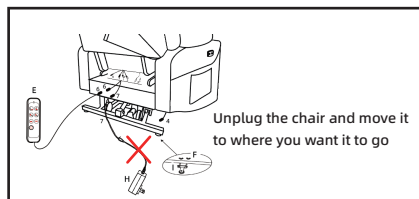
4. OPERATING INSTRUCTIONS

STEP 1	STEP 2	STEP 3
 <p>Control Backrest</p>	 <p>Control Footrest/Lift</p>	 <p>Home Button</p>

How to use the remote control for massage?



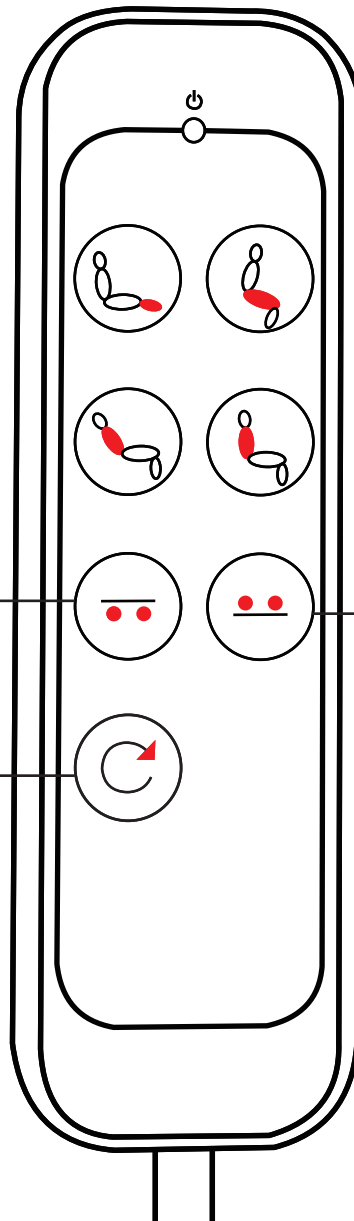
Wheelchair Mode Operation Guide



Press the Button for 3 seconds,
The wheels will release and
the chair will go into
moveable mode.



Press the HOME button for 3
seconds to return the chair
to its original position.



Connect the power cord,
Press the Button for 3 seconds,
Retract the wheels and
the chair goes into
stationary mode

Tips:

- The wheel function may not be used when the chair is not in original position.
- Adjustments for other parts can only be used after the wheels have been closed.
- If you have special needs and want to use the wheelchair in a non-original state, press the HOME button while the wheels are released to unlock the use of other parts of the adjustment function (but for your safety we do not recommend this use).

5. TROUBLESHOOTING

Question	Question Answers
What if all the chair's functions do not work?	<ul style="list-style-type: none"> • Check that all power cords are properly connected and make sure the power supply is energized. • Make sure the green light on the power adapter goes on. • Make sure red light on the base of the chair goes on.
What if massage and heat do not work?	<ul style="list-style-type: none"> • Check that all power cords are properly connected and make sure the power supply is energized. • Make sure the green light on the power adapter goes on. • Click the remote control main switch, check if the light goes on. • Make sure you've chosen a massage area.
What if the reclining /lift functions do not work?	<ul style="list-style-type: none"> • Check that all power cords are properly connected and make sure the power supply is energized. • Make sure the green light on the power adapter goes on. • Click the remote control switch, check if the light goes on. • Check that the chair is in wheelchair mode, if so retract the wheels with the hand controls
What if the wheel chair function do not work?	<ul style="list-style-type: none"> • Check that all power cords properly connected and make sure the power supply is energized. • Make sure the green light on the power adapter goes on. • Click the remote control switch, check if the light goes on • Check if the chair is in the original position, if not, use the HOME button to return it to its original position and then use the wheel chair function again.
What if the USB do not work?	<ul style="list-style-type: none"> • Check that all power cords are properly connected and make sure the power supply is energized. • Make sure the green light on the power adapter goes on. • Check that all power cords connecting the USB is not loose.
<p>• If the above doesn't help or you can't troubleshoot the problem, please provide a picture of the chair's wiring connections/remote control display/product video so that we can accurately assess the problem and provide a solution as soon as possible.</p>	

7. PRODUCT CARE

- Dust regularly with a soft, dry cloth to prevent soil build-up. Keep away from heat to avoid glazing, melting or scorching. Use a professional cleaning service to clean the fabric.

8. WARNING

- Proper assembly of this item requires 2 people.
- This product is not intended for institutional or commercial use.
- Read all instructions before assembling this product.
- FALL HAZARD - To prevent death or serious injury, always keep child within arm's reach.
- Avoid placing this item in direct sunlight to prevent fading.
- Check this product for damaged hardware, loose joints, missing parts or sharp edges before and after assembly and frequently during use.