



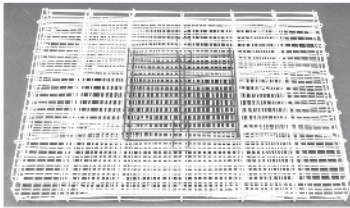
CHEW PROOF

17" 4 Story Critter Cage

Assembly Instructions

Item #00663

#30000663



Wire Cage Set
#900606



Metal Base
#900605



Wire Latches x2
#900607



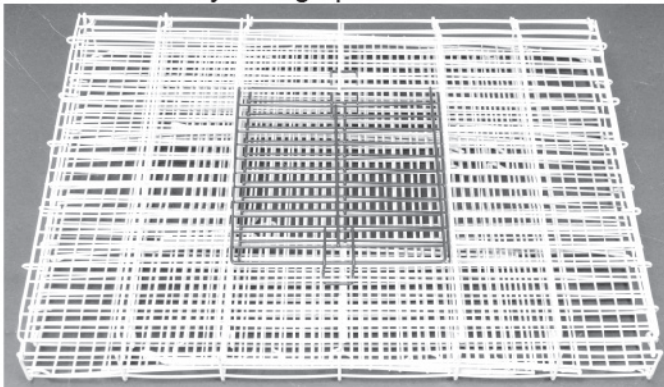
Wire Mesh Shelves x3
#900608



Wire Mesh Ramps x3
#900609

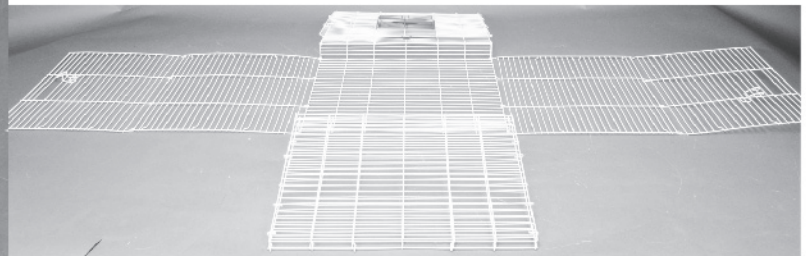
Step 1

Remove the Wire Cage Set and lay on a flat surface with the doorway facing up.



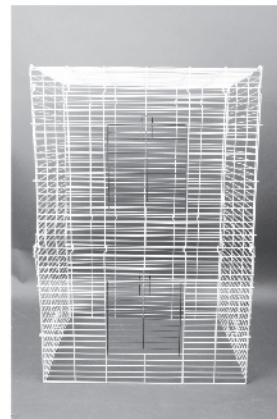
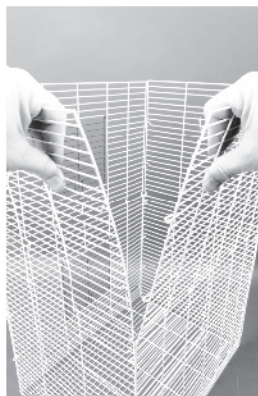
Step 2

Carefully unfold the front back and side panels.



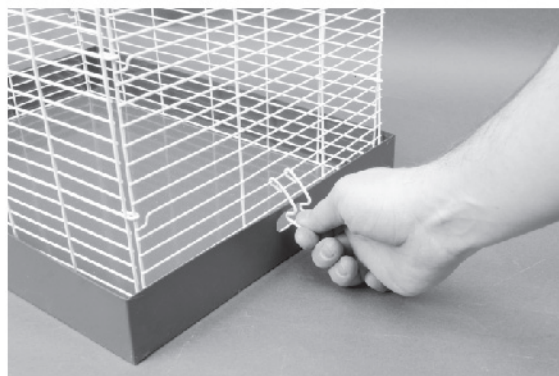
Step 3

Lock the right and left side panels to the front and back panels by connecting the wire hooks through the wire loops.



Step 4

Turn the Wire Cage Set upright and place it on top of the Metal Tray. Lock the Wire Cage Set to the metal Tray using the side wire latches. The side wire latches attach to the Wire Cage Set on the 6th wire up from the bottom.

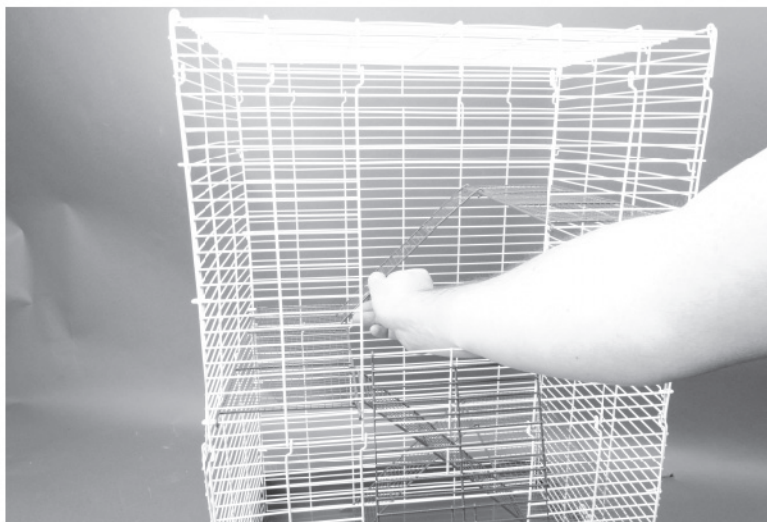


Step 5

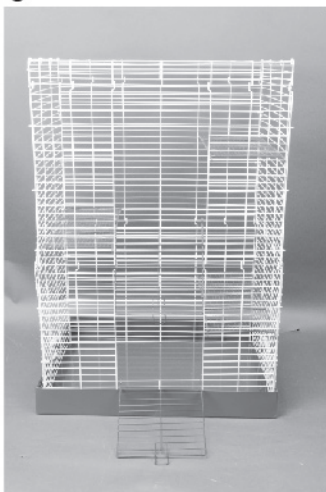
Place the first Wire Mesh Shelf on the 12th wire from the bottom of the right side, place the 2nd wire shelf on the 24th wire from the bottom on the left side, and place the last shelf on the 36th wire from the bottom on the right side.

**Step 5**

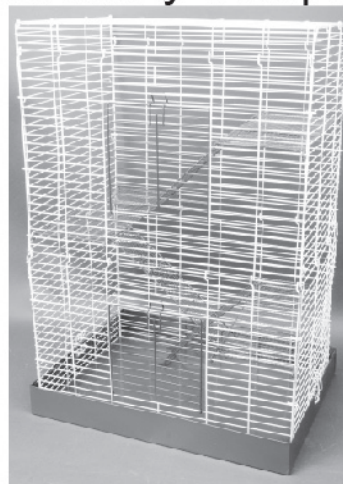
Place the Wire Mesh Ramps through the door and attach to each shelf so they lead from the bottom to the top of the cage.

**Step 5**

Close the door and safely secure with the locking latch behind the horizontal wire bar.



Assembly Complete!



If you have any questions or concerns about this product, contact our customer service department at **1-800-295-2243** or **cs@waremfginc.com** and we will help you with any problems, Mon-Fri 8:00 – 4:00 MST