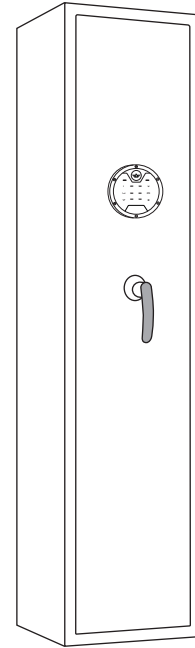


# Instruction Manual

SKU:G3Q-138D

# OMETHEY

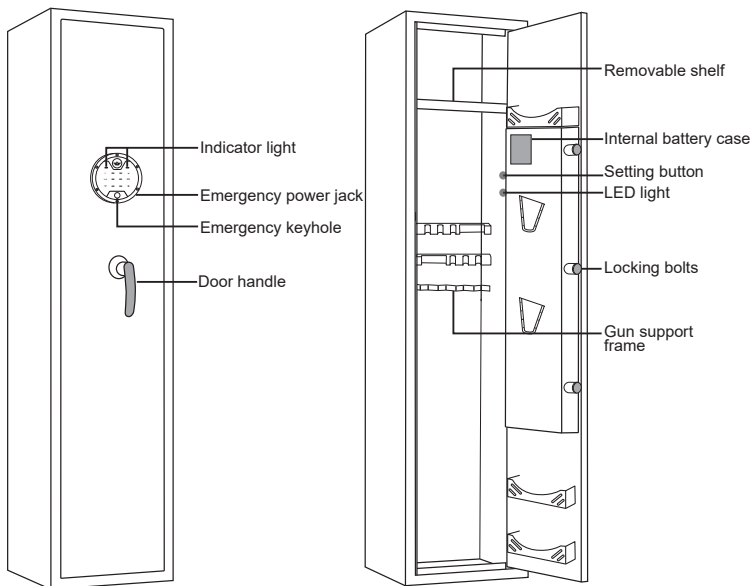


✉ After-sales Email: [aotech-service@outlook.com](mailto:aotech-service@outlook.com)  
🌐 Website: [ometheysafe.com](http://ometheysafe.com)



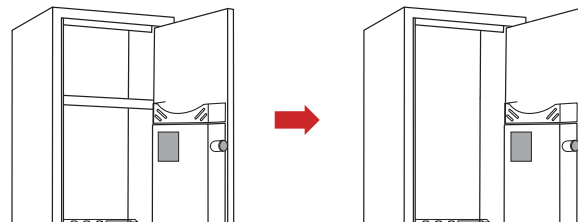
*Never keep emergency keys and emergency battery box in your gun cabinet!!!*

## Component Description



## Removable Shelf

This gun cabinet has a removable shelf, with the shelf, you can place short rifles, store your pistols and ammo on the shelf; without the shelf, you can place your long rifles, more flexible storage space.

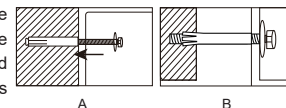
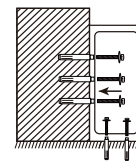


## Under-voltage Warning

When the voltage is around 4.8V, after opening the door, the buzzer will beep 6 times in a row, reminding the user that the battery power is low and the user needs to replace the battery.

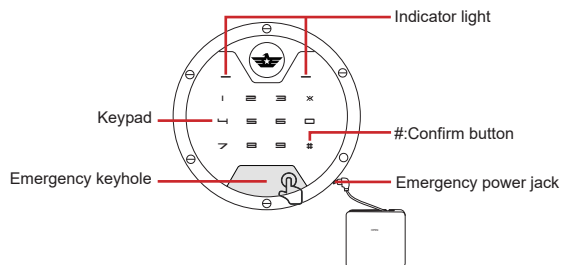
## Mounting Instructions

- Place the gun cabinet in the desired location. Lift the bottom carpeting up to find the install holes locations on the floor or wall.
- Mark the drilling spots on the wall or floor from the inside pre-drilled holes, then remove gun cabinet and drill the holes. Drill the appropriate diameter and depth of pilot holes depending on the type of hardware.
- Put the expansion bolts into the drilled holes, take the expansion bolt out of the sleeves, then place the gun cabinet and align the pre-drilled holes with drilled holes, and insert the expansion bolts into its sleeves from inside of the safe.



**⚠ NOTICE:** Please make sure to mount the gun cabinet on the wall or floor otherwise it may fall over and threaten your safety.

## Schematic Drawing of Control Panel



Thank you for choosing our products! Please take your time to read and familiar with the proper operating procedures presented on the following pages.

### IMPORTANT

#### ⚠ WARNING



- Tip over hazard: Secure the cabinet! The cabinet can be tipped over by children or adults, please make sure the cabinet is mounted on the wall or floor.
- Keep the keys in a secure place away from children.
- Do not move this cabinet using its handle.

#### Lifetime Key Matching Service

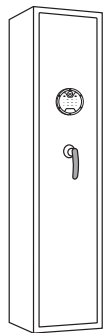
Record the serial number on the locks! (They are important information for the manufacturer to make up keys if you lose your keys.)

Serial number: \_\_\_\_\_

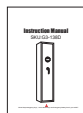


Serial number

### Parts List



Gun Cabinet \*1



Instruction Manual\*1



Emergency Battery Box\*1



Expansion Screws\*5



Emergency Key\*2

### Warnings

- ⚠ 1. Do not lock the emergency key or emergency battery box into the cabinet.
- ⚠ 2. The initial user code is **123456**, which need to be modified.
- ⚠ 3. If the cabinet is not used for a long time, the battery should be removed to prevent leakage of liquid from damaging the electronic system.
- ⚠ 4. Purchase 4 AA batteries in advance, this cabinet does not contain batteries.

### Dual Alarm System

1. After 3 consecutive times of wrong code, your safe will activate the alarm system, the alarm will sound for 30 seconds, enter the correct code and the alarm will be cancelled.
2. In standby state, press **#** to activate the keypad, then press **\***, the buzzer makes a long beep and the keypad light goes off, the vibration alarm mode is turned on. If the box is shaken or violent hit, it will give an alarm immediately for 30 seconds, at this point, enter the correct code to stop the alarm.

#### ⚠ NOTICE:

1. When power on, the system default for alarm is off.
2. After safe is opened with code, the vibration alarm will turned off and needs to be turned on again.

### Mute Function

1. In standby state, press **#** to active the keypad, press **1** twice, then press **#**, there is a long beep, indicate the mute function is turned on.
2. In mute function state, press **#** to active the keypad, press **1** twice, then press **#**, there is a long beep, indicate the mute function is turned off.

#### ⚠ NOTICE:

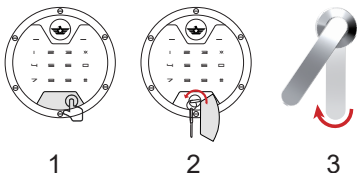
Under the mute function, the wrong code alarm and vibration alarm still work, and the alarm will sound when triggered.

### Reset the System

1. Press and hold the setting button for 3 seconds until the buzzer plays a chord, the green light on the left comes on, indicating the reset successful (All stored codes will be deleted, please use the default code to unlock).
2. The default code is **123456**, need to be modified.

## System Setting

### Step1 Open the door with the key



1. Press the right side of the keyhole cover to expose the emergency keyhole.
2. Insert the emergency key, turn it counterclockwise to the limit, and hold on it.
3. Then rotate the handle clockwise to open the door.

**⚠ NOTICE:** 1. When you rotate the handle to open, you must have the key fully inserted and turned counterclockwise to the limit, keeping the key until the safe unlocked and opened.

2. Use the key to unlock, the led light will not light up.

3. Please keep the keys in a secure place, do not lock the keys inside the safe.

### Step2 Install Battery

1. After first opening, keep the safe open and locate the battery case, prepare 4 brand-new AA 1.5 Volt alkaline batteries (not included).
2. Remove the internal battery case cover and install the 4 AA batteries by matching the + & - electrode.

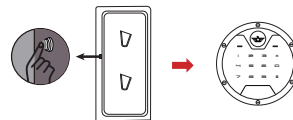
**⚠ NOTICE:** 1. Rechargeable battery is not recommended as it may destroy the internal electronic components of your safe.

2. Please use brand-new batteries, do not mix used batteries with new batteries.

3. After opening the door, if the safe beeps 6 times in a row, it means the batteries are out of power, please replace the batteries.

### Step3 Set the User Code

1. Open the safe, keep the safe opening, short press the setting button (on the inner side of the door), the safe beeps once and keypad light on.
2. Input a new code(3-12 digits), then press # to confirm. The buzzer plays a chord, indicating that the code is successfully set.
3. Testing the code before you close the door.



### Step4 Set the second code

1. Open the safe, keep the safe opening, press # to activate the keypad, enter 0 twice, then short press the setting button (on the inner side of the door), the safe beeps once and keypad light on.
2. Input a new code(3-12 digits), then press # to confirm. The buzzer plays a chord, indicating that the code is successfully set.
3. Testing the code before you close the door.

**⚠ NOTICE:**

1. 10 seconds without any operation after pressing the setting button, it will go back to standby mode, you need to set it again.
2. Please set up both of two codes immediately after receiving the safe.
3. The default code is **123456**, need to be modified.

## Three Ways to Open the Door

### 1. The first unlocking method: Use the emergency key

Insert the emergency key into the right keyhole, turn counterclockwise to the limit, then rotate the handle clockwise to open the safe (Suitable for the first opening, forget code or weak battery).

### 2. The second unlocking method: Use the user code

After installing the battery, press # to activate the keypad, enter your code and then press the # key to confirm, rotate the handle clockwise to open the safe (Suitable for quick access and daily use).

### 3. The third unlocking method: Use the emergency battery box + user code

When the battery of your safe is weak and you can't find the keys, please insert 4 AA batteries in the emergency battery box, plug the emergency power cord into the emergency power jack, then enter the correct code to open the door (Suitable for the battery is out of power and the key can not be found).